

# Monolithic crystal filter

## MQF21.4-0750/11



### Application

- 4 pol filter
- i.f.- filter
- use in mobile and stationary transceivers

### Limiting values

		Unit	Value
Nominal frequency	$f_0$	MHz	21.4
Insertion loss		dB	< 2.5
Pass band at 3.0dB		kHz	$\pm > 3.75$
Ripple in pass band	$f_0 \pm 3 \text{ kHz}$	dB	< 1.0
Stop band attenuation	$f_0 \pm 14 \text{ kHz}$	dB	> 40 except spurious
Alternate attenuation	$f_0 - 200 \dots 1000 \text{ kHz}$	dB	> 80
	$f_0 + 350 \dots 1000 \text{ kHz}$	dB	> 65 except spurious

### Terminating impedance Z

R1  C1		Ohm/pF	1600    3
R2  C2		Ohm/pF	1600    3
Coupling capacitance	Ck	pF	8.2

Operating temp. range

°C -25... +70

Storage temp. range

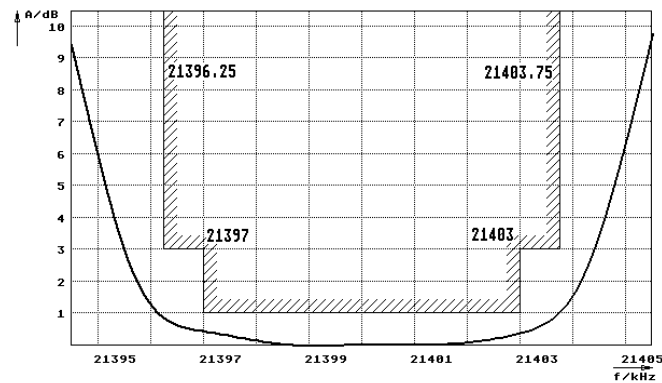
°C -45... +85

Environment conditions

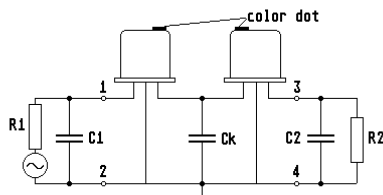
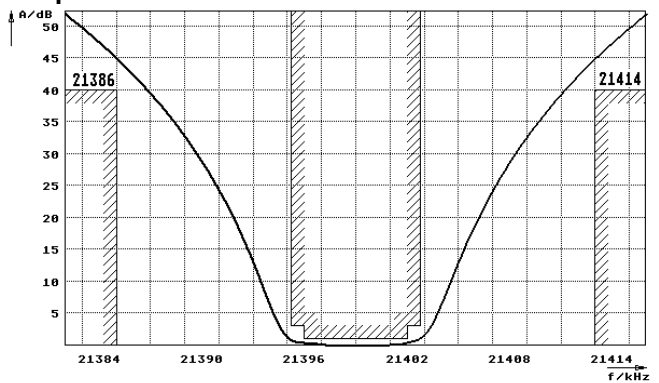
according to CF001

### Characteristics MQF21.4-0750/11

#### Pass band



#### Stop band



- Pin connections:
- 1 Input
  - 2 Ground-Input
  - 3 Output
  - 4 Ground-Output

