

PLEASE CHECK WWW.MOLEX.COM FOR LATEST PART INFORMATION

Part Number: [0878941000](#)
Status: **Active**
Overview: [extreme_powerplus_ssi](#)
Description: 5.08mm (.200") Pitch, Power, 2.54mm (.100") Pitch, Signal, EXTreme PowerPlus™ S-P(B) Receptacle, Press-fit, Vertical, 34 Circuits, Power Beta 10, Signal 24 Recessed Power Circuits at B1,B2,B3,B9,B10 with Beveled Metal Pins, Leadfree

Documents:

[3D Model](#) [Product Specification PS-87633-006 \(PDF\)](#)
[Drawing \(PDF\)](#) [RoHS Certificate of Compliance \(PDF\)](#)

Agency Certification

UL E29179

General

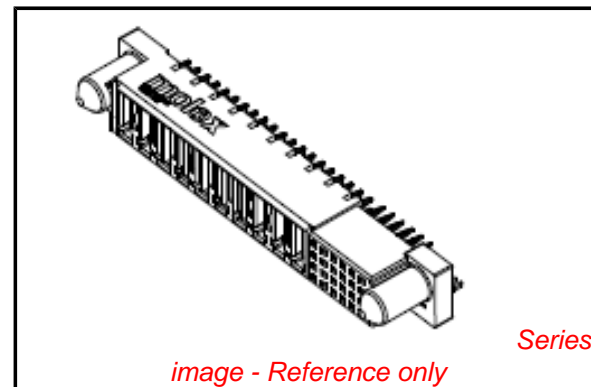
Product Family PCB Receptacles
 Series [87894](#)
 Application Board-to-Board
 Comments Recessed Power Circuits at: B1,B2,B3,B9,B10
 Overview [extreme_powerplus_ssi](#)
 Product Name EXTreme PowerPlus™

Physical

Circuits (Loaded) 34
 Circuits Detail Power Beta 10, Signal 24
 Color - Resin Black
 Durability (mating cycles max) 100
 Flammability 94V-0
 Glow-Wire Compliant No
 Guide to Mating Part Yes
 Keying to Mating Part Yes
 Material - Metal Copper Alloy
 Material - Plating Mating Gold
 Material - Plating Termination Tin
 Material - Resin High Temperature Thermoplastic
 Number of Rows 4
 Orientation Vertical
 PC Tail Length (in) 0.135 In
 PC Tail Length (mm) 3.43 mm
 PCB Locator No
 PCB Retention Yes
 Packaging Type Tray
 Pitch - Mating Interface (in) 0.100 In, 0.200 In
 Pitch - Mating Interface (mm) 2.54 mm, 5.08 mm
 Plating min: Mating (µin) 30
 Plating min: Mating (µm) 0.76
 Plating min: Termination (µin) 100
 Plating min: Termination (µm) 2.54
 Polarized to Mating Part Yes
 Polarized to PCB Yes
 Temperature Range - Operating -20°C to +105°C
 Termination Interface: Style Through Hole - Compliant Pin

Electrical

Current - Maximum per Contact 2.5A, 30A, 50A
 Voltage - Maximum 250V DC



EU RoHS

ELV and RoHS Compliant
REACH SVHC Contains SVHC: No
Halogen-Free Status

China RoHS



Need more information on product environmental compliance?

Email productcompliance@molex.com
 For a multiple part number RoHS Certificate of Compliance, [click here](#)

Please visit the [Contact Us](#) section for any non-product compliance questions.

Search Parts in this Series

[87894Series](#)

Solder Process Data

Duration at Max. Process Temperature (seconds)	10
Max. Cycles at Max. Process Temperature	1
Process Temperature max. C	260

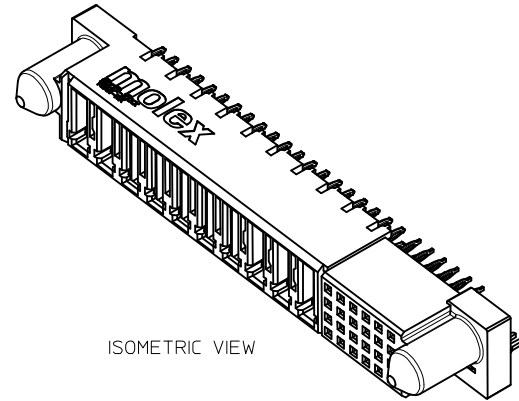
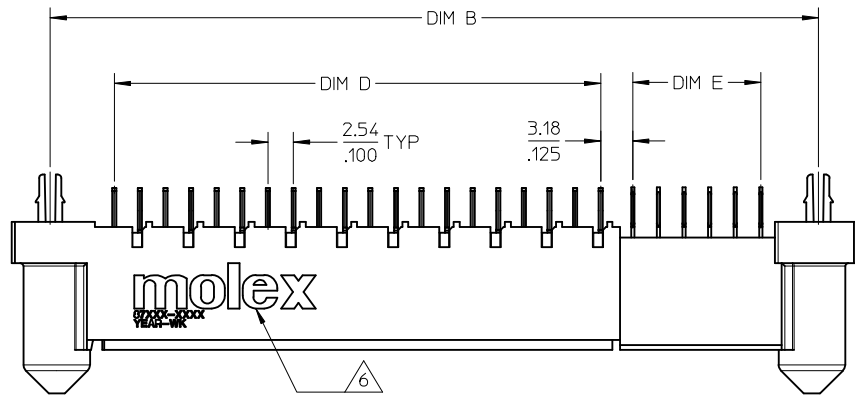
Material Info**Reference - Drawing Numbers**

Application Specification	AS-87631-018, AS-87633-007
Product Specification	PS-87633-006
Sales Drawing	SD-87894-001

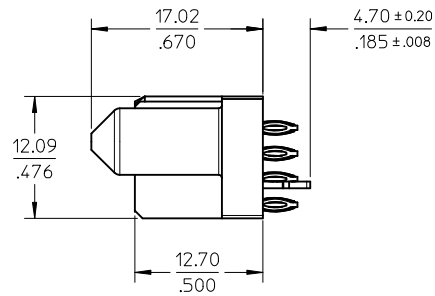
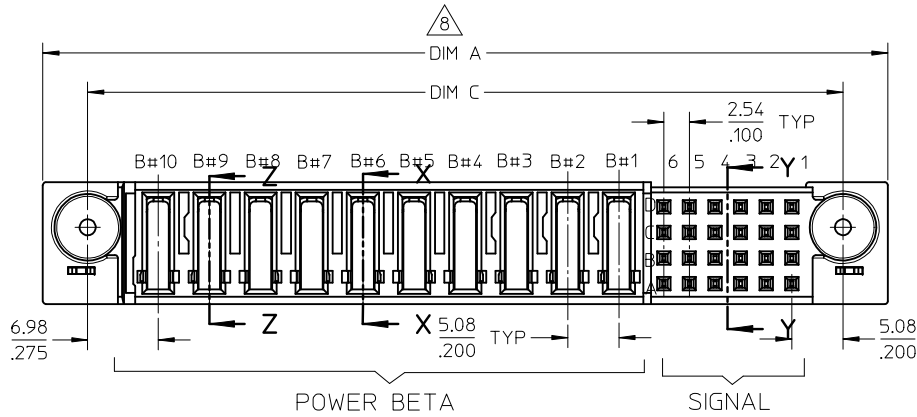
This document was generated on 05/22/2010

PLEASE CHECK WWW.MOLEX.COM FOR LATEST PART INFORMATION

10 9 8 7 6 5 4 3 2 1



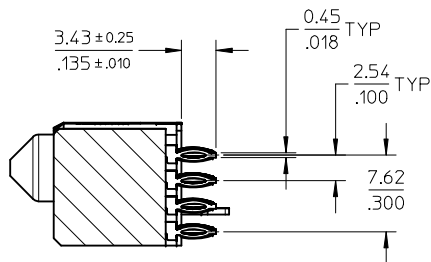
ISOMETRIC VIEW



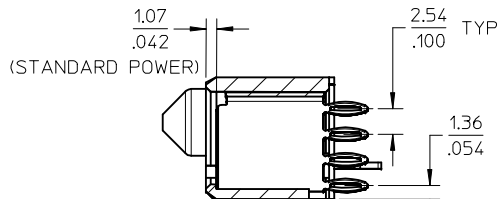
INITIAL RELEASE EC NO: S2009-0262 DRWN:SKANG 2009/01/19 CHKD:ATSEE 2009/02/04 APPR:MLONG 2009/02/06	QUALITY SYMBOLS ▽=0 ◻=0	GENERAL TOLERANCES (UNLESS SPECIFIED)		DIMENSION STYLE	SCALE	DESIGN UNITS	THIRD ANGLE PROJECTION	
				MM/IN	NTS	METRIC		
			mm	INCH	DRAWN BY	DATE	TITLE	
			4 PLACES	± ---	± ---	SKANG	2008/10/02	POWER CONN. RECEPTACLE
	3 PLACES	± ---	± .01	CHECKED BY	DATE	S-P(B) CONFIGURATION		
	2 PLACES	± 0.25	± ---	ATSEE	2008/12/18	VERTICAL, P/F, B/L		
	1 PLACE	± ---	± ---	APPROVED BY	DATE	MOLEX INCORPORATED		
	ANGULAR ± 3 °			MLONG	2008/12/18	MOLEX INCORPORATED		
	DRAFT WHERE APPLICABLE MUST REMAIN WITHIN DIMENSIONS			MATERIAL NO.		DOCUMENT NO.	SHEET NO.	
				SEE TABLE		SD-87894-001	1 OF 2	
				SIZE A3	THIS DRAWING CONTAINS INFORMATION THAT IS PROPRIETARY TO MOLEX INCORPORATED AND SHOULD NOT BE USED WITHOUT WRITTEN PERMISSION			

9 8 7 6 5 4 3 2 1

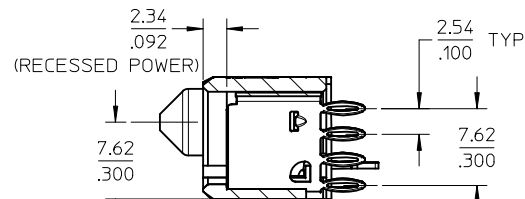
10	9	8	7	6	5	4	3	2	1
ASSEMBLY PART NUMBER	P-S CONFIGURATION		DIMENSION					RECESSED POWER CIRCUIT	PACKAGING
	POWER(BETA)	SIGNAL	DIM A	DIM B	DIM C	DIM D	DIM E		
87894-1000	10	24	83.82 3.300	76.20 3.000	74.93 2.950	48.26 1.900	12.70 .500	B1, B2, B3, B9, B10	TRAY



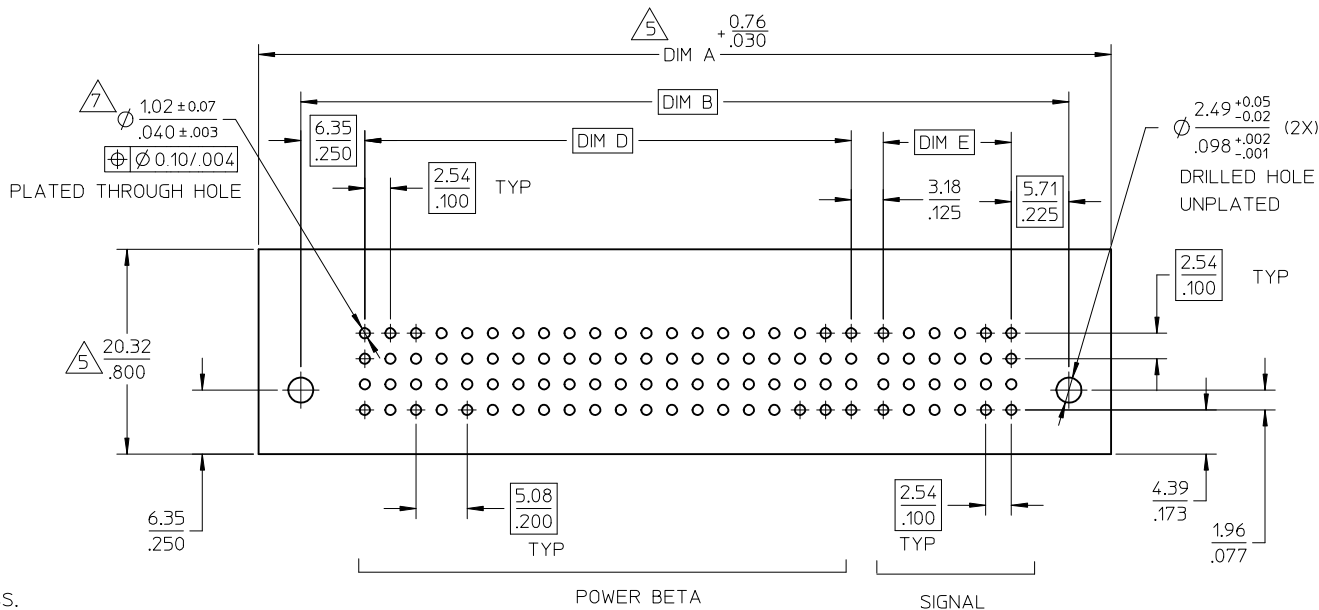
SECTION Y-Y



SECTION X-X



SECTION Z-Z



NOTES

1. MATERIALS :

- HOUSING - LCP, GLASS FILLED, UL94-0,COLOR:BLACK.
- SIGNAL PIN - COPPER ALLOY
- POWER PIN - COPPER ALLOY
- BOARDLOCK - COPPER ALLOY

2. FINISH :

- SIGNAL & POWER CONTACTS
- 0.76 MICROMETER MINIMUM GOLD (Au) AT CONTACT AREA AND 2.54 MICROMETER MINIMUM TIN AT SOLDER TAIL AREA OVER 1.27um MIN. NICKEL (Ni) UNDERPLATE.

3. PRODUCT SPECIFICATION: PS-87633-006.

4. SEE SHEET 2 FOR RECOMMENDED PCB LAYOUT AND THICKNESS.

5. COMPONENT STAY AWAY ZONE FROM CONNECTOR.

6. MANUFACTURER LOGO,PART NUMBER AND YEAR-WEEK CODE.

7. PCB NOTE FOR DIAMETER 1.02/.040 PLATED HOLE.

- DRILLED HOLE SIZE IS 1.151/.0453
- PLATE WITH 0.007/.0003 MINIMUM TIN OVER 0.03/.001 TO 0.08/.003 COPPER PLATING TO ACHIEVE 1.02±0.08/.040±.003 HOLE.

8. 24 SIGNAL - 10 POWER BETA IS SHOWN FOR ILLUSTRATION CONNECTOR CONFIGURATON IS AVAILABLE UP TO 203MM/INCH. PLEASE CONTACT MOLEX SALES PERSONNEL FOR OTHER CONFIGURATION AND OPTION NEEDED.

<p>INITIAL RELEASE</p> <p>EC NO: S2009-0262</p> <p>DRWN:SKANG 2009/01/19</p> <p>CHKD:ATSEE 2009/02/04</p> <p>APPR:MLONG 2009/02/06</p>	<p>QUALITY SYMBOLS</p> <p>▽=0</p> <p>⊕=0</p>	GENERAL TOLERANCES (UNLESS SPECIFIED)		DIMENSION STYLE		SCALE	DESIGN UNITS	THIRD ANGLE PROJECTION			
				MM/IN		NTS	METRIC				
				mm	INCH	DRAWN BY	DATE	TITLE			
						SKANG	2008/10/02	POWER CONN. RECEPTACLE			
				CHECKED BY		DATE					
				ATSEE		2008/12/18					
				APPROVED BY		DATE					
				MLONG		2008/12/18					
				MATERIAL NO.		DOCUMENT NO.		SHEET NO.			
				SEE TABLE		SD-87894-001		2 OF 2			
				DRAFT WHERE APPLICABLE MUST REMAIN WITHIN DIMENSIONS						THIS DRAWING CONTAINS INFORMATION THAT IS PROPRIETARY TO MOLEX INCORPORATED AND SHOULD NOT BE USED WITHOUT WRITTEN PERMISSION	
				SIZE							
				A3							