

**PLEASE CHECK WWW.MOLEX.COM FOR LATEST PART INFORMATION**

**Part Number:** [0676872050](#)  
**Status:** **Active**  
**Description:** 2.54mm (.100") Pitch SIM Card Connector, Surface Mount, 6 Circuit, 2.00mm (.079") Housing Height, Lead Free

**Documents:**

[3D Model](#)  
[Drawing \(PDF\)](#)

[RoHS Certificate of Compliance \(PDF\)](#)

**General**

Product Family	Memory Card Sockets
Series	<a href="#">67687</a>
Button Type	N/A
Comments	Housing Height: 2.00mm (.079")
Component Type	Header/Socket (Host)
Product Name	SIM
Type	N/A

**Physical**

Card Detection Switch	N/A
Circuits (Loaded)	6
Circuits (maximum)	6
Color - Resin	Black
Durability (mating cycles max)	10,000
Ejector Button Side	No Ejector Button Present
Entry Angle	N/A
Keying to Mating Part	None
Material - Metal	Copper Alloy
Material - Plating Mating	Gold
Material - Plating Termination	Tin
Material - Resin	High Temperature Thermoplastic
PCB Locator	No
PCB Mounting Side	Normal
PCB Retention	None
Packaging Type	Embossed Tape on Reel
Pitch - Mating Interface (in)	0.100 In
Pitch - Mating Interface (mm)	2.54 mm
Pitch - Term. Interface (in)	0.100 In
Pitch - Term. Interface (mm)	2.54 mm
Plating min: Mating (µin)	30
Plating min: Mating (µm)	0.76
Plating min: Termination (µin)	2
Plating min: Termination (µm)	0.05
Ports	1
Temperature Range - Operating	-40°C to +85°C
Termination Interface: Style	Surface Mount

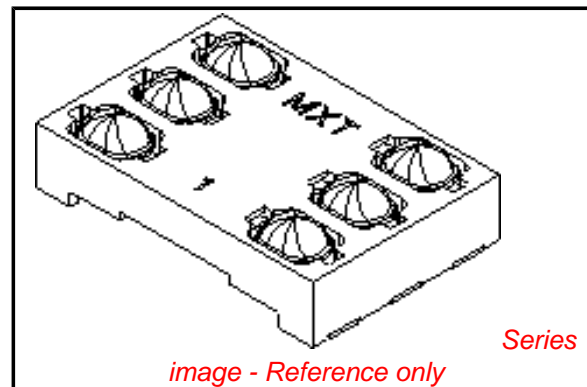
**Electrical**

Current - Maximum per Contact	0.5A
Shielded	No
Voltage - Maximum	50V DC

**Material Info**

**Reference - Drawing Numbers**

Sales Drawing	SD-67687-511
---------------	--------------



**EU RoHS**

**ELV and RoHS  
Compliant**  
**REACH SVHC**  
 Not Reviewed  
**Halogen-Free  
Status**

**China RoHS**



**Not Reviewed**

**Need more information on product  
environmental compliance?**

Email [productcompliance@molex.com](mailto:productcompliance@molex.com)  
 For a multiple part number RoHS Certificate of  
 Compliance, [click here](#)

Please visit the [Contact Us](#) section for any  
 non-product compliance questions.

**Search Parts in this Series**

[67687Series](#)

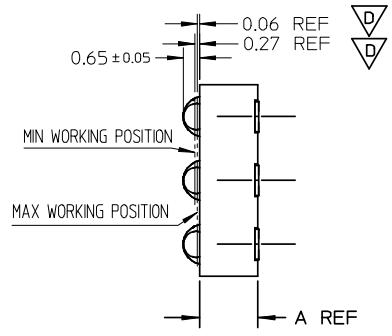
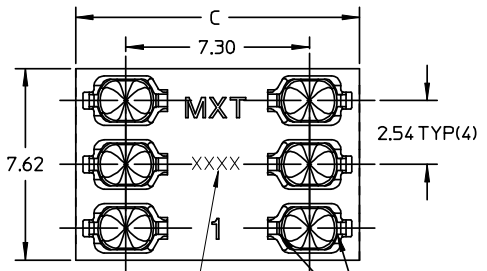
**Mates With**

Standard SIM Card

This document was generated on 03/31/2010

**PLEASE CHECK [WWW.MOLEX.COM](http://WWW.MOLEX.COM) FOR LATEST PART INFORMATION**

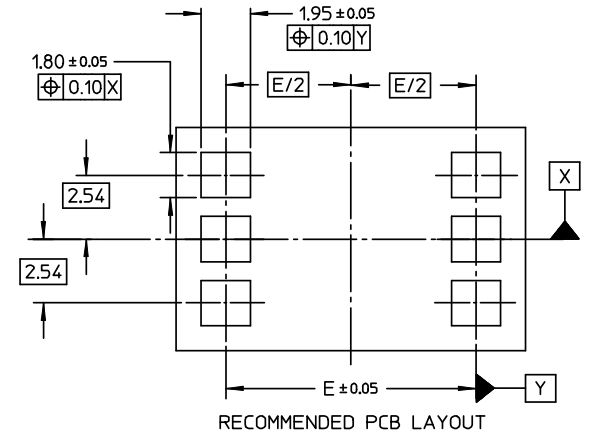
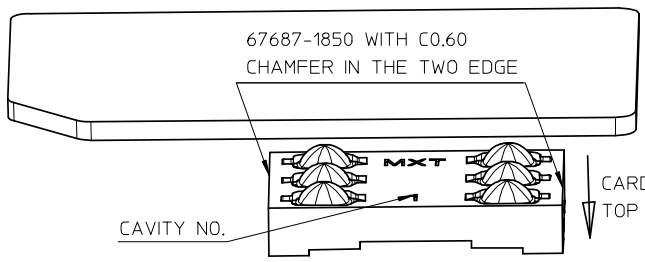
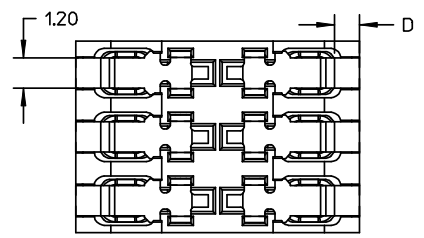
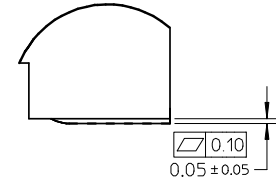
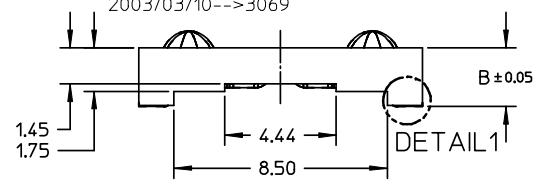
10 9 8 7 6 5 4 3 2 1



DIMENSION E	DIMENSION D	DIMENSION C	DIMENSION A	PART NUMBER
9.95	1.00	11.30	1.80	67687-1850
10.05	1.20	11.70	2.00	67687-2050
9.95	1.00	11.30	2.30	67687-2350
9.95	1.00	11.30	2.45	67687-2550
9.95	1.00	11.30	2.90	67687-2950
9.95	1.00	11.30	3.50	67687-3550

\*.DIMB=DIMA+0.05

DATE CODE (INK JET)  
 X X X X \_ DAY COUNTED FROM FIRST  
 \_ \_ \_ \_ DAY OF THE YEAR  
 - - - - -YEAR  
 EX. 2002/01/15-->2015  
 2002/02/10-->2041  
 2003/03/10-->3069



NOTES:  
 1.MATERIAL:  
 HOUSING: HIGH TEMPERATURE PLASTIC,  
 TERMINAL: COPPER ALLOY  
 2.PLATING:  
 CONTACT AREA PLATING:  
 30u" MIN GOLD OVER 50u"MIN NICKEL PLATING  
 SOLDERING AREA PLATING:  
 100u" MIN PURE TIN OVER 50u"MIN NICKEL PLATING  
 VISIBLE AREA PLATING:  
 GOLD FLASH OVER 50u" MIN NICKEL PLATING  
 3.PACKAGING:TAPE REEL  
 4.PRODUCT SPECIFICATION:PS-67687-001  
 5.COMPLIANT TO RoHS DIRECTIVE 2002/95/EC AND  
 ELV DIRECTIVE 2000/53/EC.

RELEASE EC NO: SH2008-0471 DRW:PFCHU CHKD:YLZHUO APPR:HWANG	2008/03/25	2008/04/11	2008/07/02
	DESCRIPTION		
	REV		

QUALITY SYMBOLS	GENERAL TOLERANCES (UNLESS SPECIFIED)	
	mm	INCH
▽=0	4 PLACES ± ---	± ---
▽=0	3 PLACES ± ---	± ---
	2 PLACES ± 0.05	± ---
	1 PLACE ± 0.10	± ---
	ANGULAR ± 2 °	

DIMENSION STYLE		SCALE	DESIGN UNITS	THIRD ANGLE PROJECTION
MM ONLY		5:1	METRIC	
DRAWN BY	DATE	TITLE		
SSUN	2004/11/04	6 CKTS SIM CARD CONNECTOR SD DRAWING		
CHECKED BY	DATE			
RZHAO	2004/11/04			
APPROVED BY	DATE			
SAMHUANG	2004/11/04			
MATERIAL NO.	DOCUMENT NO.			
SEE TABLE	SD-67687-511			
SIZE	THIS DRAWING CONTAINS INFORMATION THAT IS PROPRIETARY TO MOLEX INCORPORATED AND SHOULD NOT BE USED WITHOUT WRITTEN PERMISSION			
A3				

MOLEX INCORPORATED		SHEET NO.
		1 OF 1

9 8 7 6 5 4 3 2 1