

"PRELIMINARY"

2450 / 5400 MHz Diplexer (BPF / BPF)

P/N 2400DP39A5425

Detail Specification: 09/09/04

Page 1 of 2

General Specifications

Part Number	2400DP39A5425				
Attenuation in Low Band Path	* 1.80 dB max. @ 2.3 ~ 2.4 GHz	* 1.5 dB max. @ 2.4 ~ 2.5 GHz	20 dB min. @ DC - 1.75 GHz	15 dB min. @ 1.91 GHz	20 dB min. @ 4.8 ~ 6.0 GHz
Attenuation in High Band Path	* 1.50 dB max. @ 4.9 ~ 5.95 GHz	20 dB min. @ DC - 2.5 GHz	5 dB min. @ 7.5 GHz	20 dB min. @ 9.0 ~ 12.0 GHz	25 dB min. @ 10.0 GHz

Pass-band Return Loss In Both Bands	9.5 dB min.
--	-------------

* Note: The I.L. parameters are based on probed & TRL cal'd measurement

Input Power	3 Watts max.
Impedance	50 Ω
Operating Temp	-40 to +85°C
Storage Temp	-40 to +85°C
Reel Quantity	3000

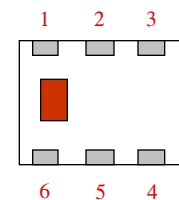
Mechanical Dimensions

	In	mm
L	0.098 ± 0.012	2.50 ± 0.30
W	0.079 ± 0.008	2.00 ± 0.20
T	0.028 ± 0.004	0.70 ± 0.10
a	0.016 ± 0.004	0.40 ± 0.10
b	0.014 ± 0.004	0.35 ± 0.10
c	0.012 +.004/-0.008	0.30 +0.1/-0.2
g	0.012 ± 0.004	0.30 ± 0.10
p	0.028 ± 0.004	0.70 ± 0.10

Unit : mm

Terminal Configuration

No.	Function
1	GND
2	Common Port (P2)
3	GND
4	Higher Freq. Port (P3)
5	GND
6	Lower Freq. Port (P1)

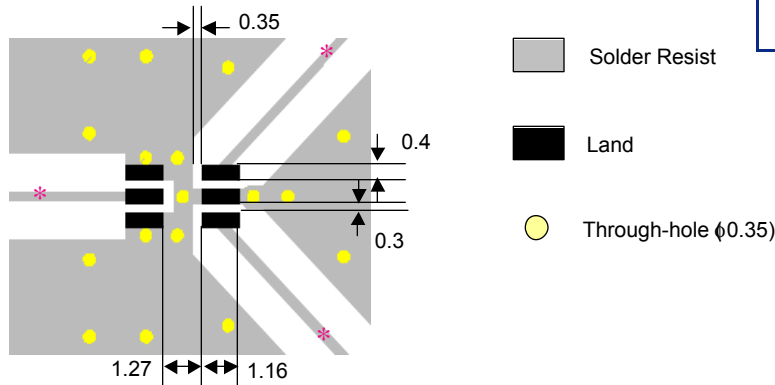


Mounting Considerations

Mount these devices with brown mark facing up.

Line width should be designed to provide 50Ω impedance matching characteristics.

Units: mm



Johanson Technology, Inc. reserves the right to make design changes without notice.

All sales are subject to Johanson Technology, Inc. terms and conditions.

"PRELIMINARY"

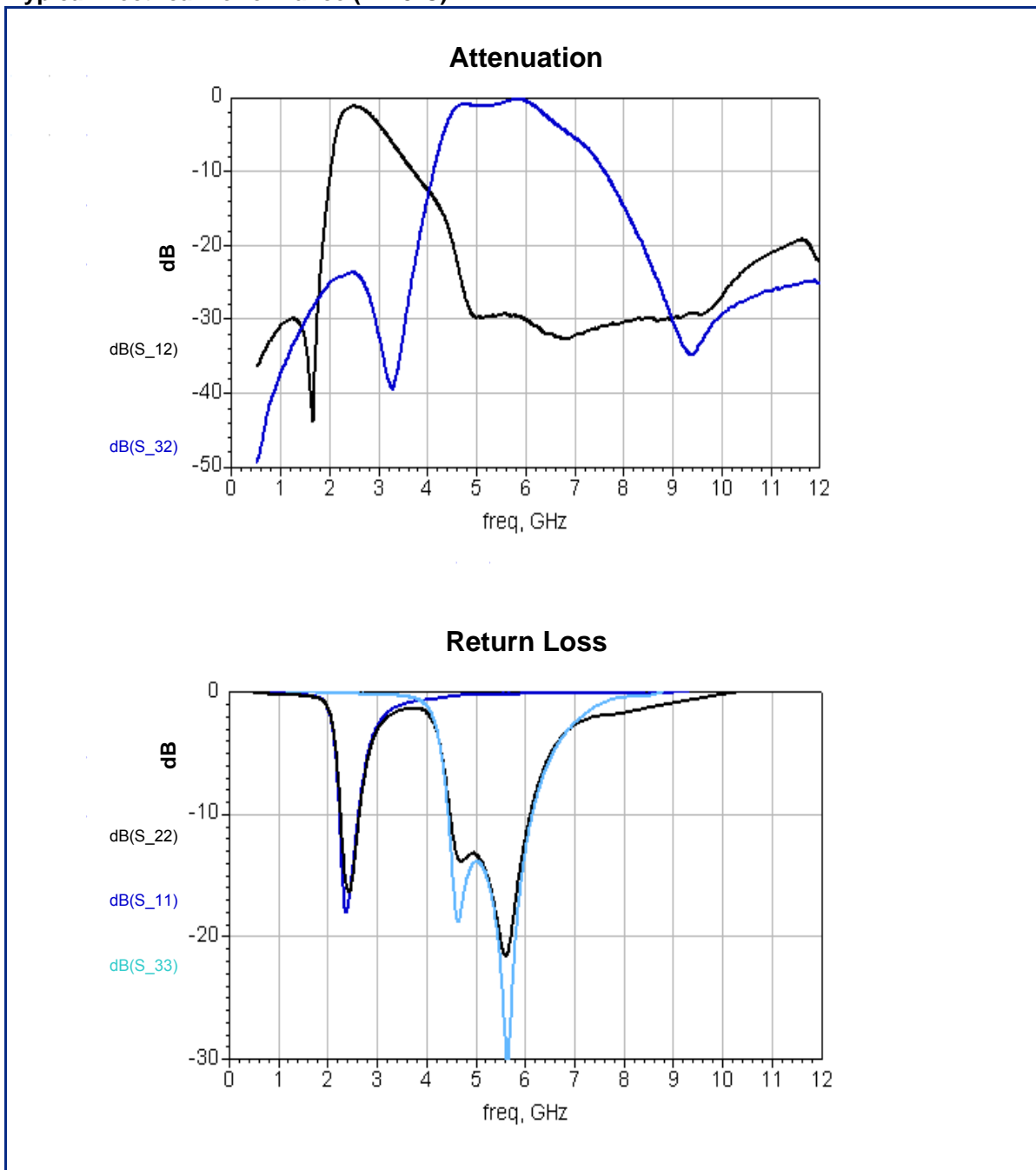
2450 / 5400 MHz Diplexer (BPF / BPF)

P/N 2400DP39A5425

Detail Specification: 09/09/04

Page 2 of 2

Typical Electrical Performance (T=25°C)



Johanson Technology, Inc. reserves the right to make design changes without notice.

All sales are subject to Johanson Technology, Inc. terms and conditions.



www.johansontechnology.com

931 Via Alondra • Camarillo, CA 93012 • TEL 805.389.1166 FAX 805.389.1821

2003 Johanson Technology, Inc. All Rights Reserved