

PLEASE CHECK WWW.MOLEX.COM FOR LATEST PART INFORMATION

Part Number: **0399300208**
Status: **Active**
Description: 3.81mm (.150") Pitch Beau™ EuroMate™ Pluggable PCB Terminal Block, Dual Level, 90° Wire Entry, 8 Circuits

Documents:

[Drawing \(PDF\)](#) [RoHS Certificate of Compliance \(PDF\)](#)

Agency Certification

UL E48521

General

| | |
|-----------------------------|-----------------------|
| Product Family | Terminal Blocks |
| Series | 39930 |
| Application | Wire-to-Board |
| Component Type | Plug |
| Product Literature Order No | USA-264 |
| Product Name | EuroMate™ Pluggable |
| Type | Euro Block |

Physical

| | |
|--------------------------------|--------------------|
| Circuits (Loaded) | 8 |
| Color - Resin | Black |
| Entry Angle | Horizontal |
| Flammability | 94V-0 |
| Lock to Mating Part | None |
| Material - Plating Mating | Tin |
| Material - Plating Termination | Tin |
| Material - Resin | Nylon |
| Number of Rows | 2 |
| Orientation | Vertical |
| Panel Mount | No |
| Pitch - Mating Interface (in) | 0.150 In |
| Pitch - Mating Interface (mm) | 3.81 mm |
| Polarized to Mating Part | Yes |
| Stackable | No |
| Temperature Range - Operating | 130°C |
| Termination Interface: Style | Screw or Lug |
| Wire Size AWG | 14, 16, 18, 20, 22 |
| Wire Size mm² | 0.50 - 1.50 |

Electrical

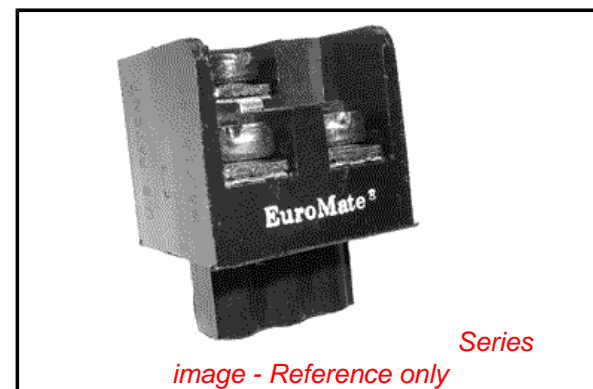
| | |
|-------------------------------|------|
| Current - Maximum per Contact | 12A |
| Voltage - Maximum | 300V |

Material Info

| | |
|-----------------|--------|
| Old Part Number | 930808 |
|-----------------|--------|

Reference - Drawing Numbers

| | |
|---------------|--------------|
| Sales Drawing | SD-39930-003 |
|---------------|--------------|



EU RoHS

ELV and RoHS Compliant
REACH SVHC
 Not Reviewed
Halogen-Free Status
 Not Reviewed

China RoHS



Need more information on product environmental compliance?

Email productcompliance@molex.com
 For a multiple part number RoHS Certificate of Compliance, [click here](#)

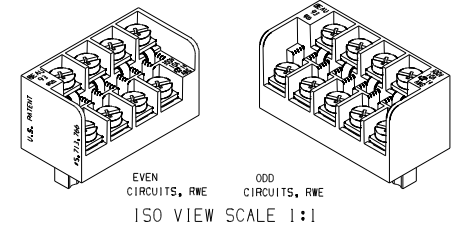
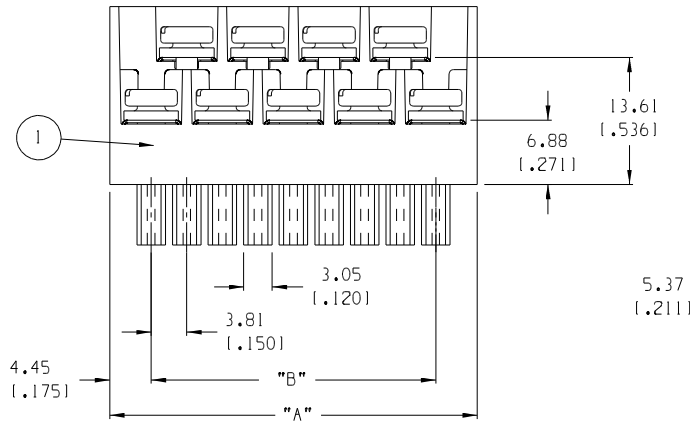
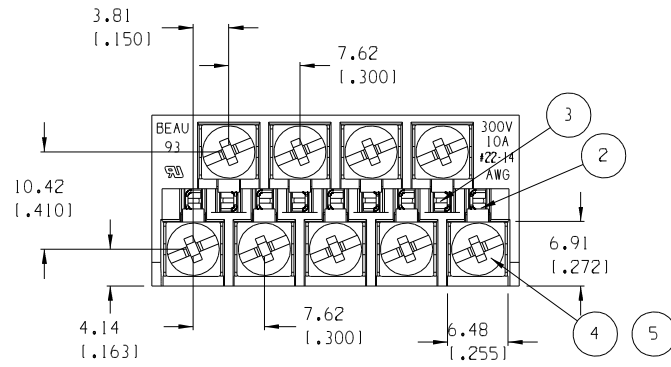
Please visit the [Contact Us](#) section for any non-product compliance questions.

Search Parts in this Series

[39930Series](#)

Mates With

[39511-1008](#) , [39512-1008](#)



| NUMBER OF CIRCUITS | "A" DIM. | "B" DIM. | MATERIAL NUMBER |
|--------------------|---------------|---------------|-----------------|
| 03 | 16.51 (1.650) | 7.62 (1.300) | 399300203 |
| 04 | 20.32 (1.800) | 11.43 (1.450) | 399300204 |
| 05 | 24.13 (1.950) | 15.24 (1.600) | 399300205 |
| 06 | 27.94 (1.100) | 19.05 (1.750) | 399300206 |
| 07 | 31.75 (1.250) | 22.86 (1.900) | 399300207 |
| 08 | 35.56 (1.400) | 26.67 (1.050) | 399300208 |
| 09 | 39.37 (1.550) | 30.48 (1.200) | 399300209 |
| 10 | 43.18 (1.700) | 34.29 (1.350) | 399300210 |
| 11 | 46.99 (1.850) | 38.10 (1.500) | 399300211 |
| 12 | 50.80 (2.000) | 41.91 (1.650) | 399300212 |
| 13 | 54.61 (2.150) | 45.72 (1.800) | 399300213 |
| 14 | 58.42 (2.300) | 49.53 (1.950) | 399300214 |
| 15 | 62.23 (2.450) | 53.34 (2.100) | 399300215 |
| 16 | 66.04 (2.600) | 57.15 (2.250) | 399300216 |
| 17 | 69.85 (2.750) | 60.96 (2.400) | 399300217 |
| 18 | 73.66 (2.900) | 64.77 (2.550) | 399300218 |
| 19 | 77.47 (3.050) | 68.58 (2.700) | 399300219 |
| 20 | 81.28 (3.200) | 72.39 (2.850) | 399300220 |
| 21 | 85.09 (3.350) | 76.20 (3.000) | 399300221 |

- NOTES:
1. MATERIAL: SEE TABLE
 2. FINISHES: SEE TABLE
 3. PRODUCT SPECIFICATION: NOT REQUIRED
 4. INCH DIMS ARE SHOWN IN PARENTHESIS (XXX)
 5. "XX" REFERS TO THE NUMBER OF CIRCUITS
 6. MATES WITH: 3.81 MM HEADERS

| ITEM | QTY. (EVEN NO. OF CIRCUITS) | QTY. (ODD NO. OF CIRCUITS) | DESCRIPTION | MATERIAL | FINISH |
|------|-----------------------------|----------------------------|------------------------|---------------|---------------|
| 5 | "XX" | "XX" | SCREW M3 SQUARE WASHER | STEEL | ZINC CHROMATE |
| 4 | "XX" | "XX" | NUT HEX M3 | STEEL | ZINC CHROMATE |
| 3 | XX/2 | (XX-1)/2 | TERMINAL LONG | COPPER | TIN |
| 2 | XX/2 | (XX+1)/2 | TERMINAL SHORT | COPPER | TIN |
| 1 | 1 | 1 | BODY FWE 3.81 | THERMOPLASTIC | BLACK |

| | | | | | |
|---|---|--|---|--|--|
| EC NO. 11648 DRAWN: RK 8-22-05 CH:K1 APPR: | DESCRIPTION MAJOR CRITICAL SPC | GENERAL TOLERANCES: (UNLESS SPECIFIED) | SCALE 2:1 DESIGN UNITS <input type="checkbox"/> mm <input checked="" type="checkbox"/> INCH | THIRD ANGLE PROJECTION | PROJECT NO. - DIMENSIONS: <input checked="" type="checkbox"/> mm <input type="checkbox"/> INCH <input type="checkbox"/> mm ONLY |
| | | 4 PLACES ±.0015 INCH 3 PLACES ±.038 INCH ±.005 2 PLACES ±.13 INCH ±.01 1 PLACE ±.3 INCH | DRAWN BY & DATE J. FARMER 12-03-04 | CHECKED BY & DATE R. KEMP 12-03-04 | TITLE: PLUG, RWE, 3.81 MM EUROMATE ASY -C |
| | | ANGULAR: ±2° | CAD FILENAME 9308XX.PRT | APPROVED BY & DATE GHR 12-03-04 | MOLEX INCORPORATED |
| | | DRAFT WHERE APPLICABLE MUST REMAIN WITHIN DIMENSIONS | THIS DRAWING CONTAINS INFORMATION THAT IS PROPRIETARY TO MOLEX INCORPORATED AND SHOULD NOT BE USED WITHOUT WRITTEN PERMISSION. | MATERIAL NO. SEE CHART DRAWING NO. SD-39930-003 | SHEET NO. 1 OF 1 REVISE ON CAD ONLY |