

PLEASE CHECK WWW.MOLEX.COM FOR LATEST PART INFORMATION

Part Number: [0674910021](#)
Status: **Active**
Overview: Serial ATA Products
Description: 1.27mm (.050") Pitch Serial ATA High Speed Header, Through Hole, Vertical, 7 Circuits, 0.76µm (30µ") Gold (Au) Selective Plating, with 2.05mm (.081") PC Tail Length, Lead-free

Documents:

[3D Model](#) [Product Specification PS-67491-001 \(PDF\)](#)
[Drawing \(PDF\)](#) [RoHS Certificate of Compliance \(PDF\)](#)

General

| | |
|----------------|-------------------------------------|
| Product Family | PCB Headers |
| Series | 67491 |
| Application | Board-to-Board, Wire-to-Board |
| Overview | Serial ATA Products |
| Product Name | Serial ATA |

Physical

| | |
|--------------------------------|----------------|
| Breakaway | No |
| Circuits (Loaded) | 7 |
| Color - Resin | Black |
| Durability (mating cycles max) | 50 |
| First Mate / Last Break | Yes |
| Glow-Wire Compliant | No |
| Guide to Mating Part | No |
| Keying to Mating Part | Yes |
| Lock to Mating Part | Yes |
| Material - Plating Mating | Gold |
| Material - Plating Termination | Tin |
| Material - Resin | Polyester |
| Number of Rows | 1 |
| Orientation | Vertical |
| PC Tail Length (in) | 0.081 In |
| PC Tail Length (mm) | 2.05 mm |
| PCB Locator | Yes |
| PCB Retention | Yes |
| PCB Thickness Recommended (in) | 0.062 In |
| PCB Thickness Recommended (mm) | 1.60 mm |
| Packaging Type | Tray |
| Pitch - Mating Interface (in) | 0.050 In |
| Pitch - Mating Interface (mm) | 1.27 mm |
| Pitch - Term. Interface (in) | 0.050 In |
| Pitch - Term. Interface (mm) | 1.27 mm |
| Plating min: Mating (µin) | 30.4 |
| Plating min: Mating (µm) | 0.76 |
| Plating min: Termination (µin) | 50.8 |
| Plating min: Termination (µm) | 1.27 |
| Polarized to Mating Part | Yes |
| Polarized to PCB | Yes |
| Shrouded | No |
| Stackable | No |
| Surface Mount Compatible (SMC) | No |
| Temperature Range - Operating | -35°C to +85°C |
| Termination Interface: Style | Through Hole |

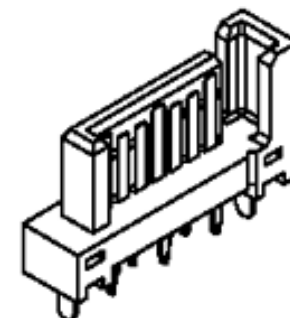


image - Reference only

Series

EU RoHS

ELV and RoHS Compliant

REACH SVHC

Not Reviewed

Halogen-Free

Status

Not Halogen-Free

China RoHS



Need more information on product environmental compliance?

Email productcompliance@molex.com
 For a multiple part number RoHS Certificate of Compliance, [click here](#)

Please visit the [Contact Us](#) section for any non-product compliance questions.

Search Parts in this Series

[67491Series](#)

Mates With

Serial ATA Signal Connector [67489](#) , [88755](#)

Electrical

| | |
|-------------------------------|--------|
| Current - Maximum per Contact | 1.5A |
| Voltage - Maximum | 15V DC |

Solder Process Data

| | |
|--|---------------------------|
| Duration at Max. Process Temperature (seconds) | 3 |
| Lead-free Process Capability | Reflow Capable (SMT only) |
| Max. Cycles at Max. Process Temperature | 1 |
| Process Temperature max. C | 255 |

Material Info**Reference - Drawing Numbers**

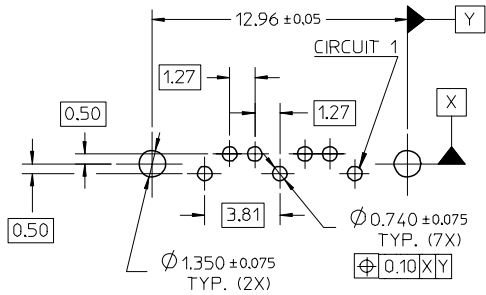
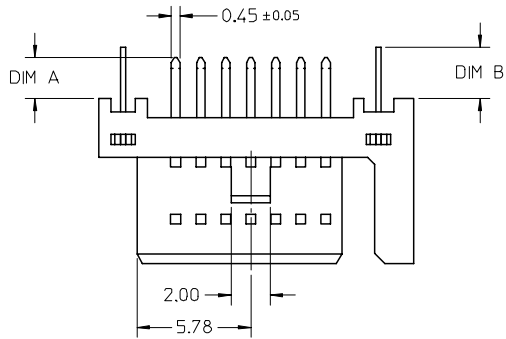
| | |
|-----------------------|--------------|
| Product Specification | PS-67491-001 |
| Sales Drawing | SD-67491-001 |

This document was generated on 04/07/2010

PLEASE CHECK WWW.MOLEX.COM FOR LATEST PART INFORMATION

10 9 8 7 6 5 4 3 2 1

F

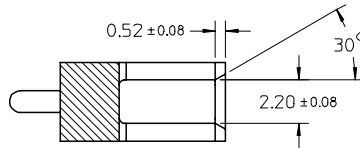
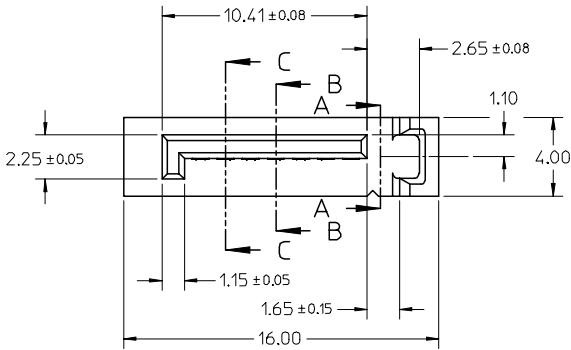


RECOMMENDED P.C.B. LAYOUT (T=1.6mm/2.0mm/2.4mm)

NOTES:

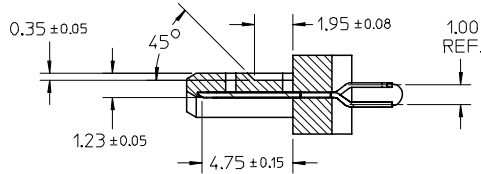
1. MATERIAL:
HOUSING: THERMAL PLASTIC, UL94V-0, COLOR: SEE SHEET2
TERMINAL/PEG: COPPER ALLOY, THICKNESS=0.25MM
2. TERMINAL PLATING:
CONTACT AREA: (a) GOLD FLASH
(b) 0.76 MICRON GOLD PLATED
(c) 0.38 MICRON GOLD PLATED
- SOLDER TAIL:
1.27 MICRON MIN. MATTE TIN PLATED
UNDER PLATE:
1.27 MICRON MIN. NICKEL PLATED
3. PEG PLATING:
1.27 MICRON MIN. MATTE TIN PLATED OVERALL
1.27 MICRON MIN. NICKEL UNDER PLATED
4. PACKAGING SPECIFICATION REFER TO PK-67491-001
5. PRODUCT SPECIFICATION REFER TO PS-67491-001
6. MATING PART: 67489
7. RECOMMENDED PROCESS: WAVE SOLDERING

E



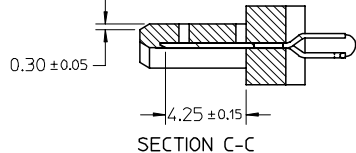
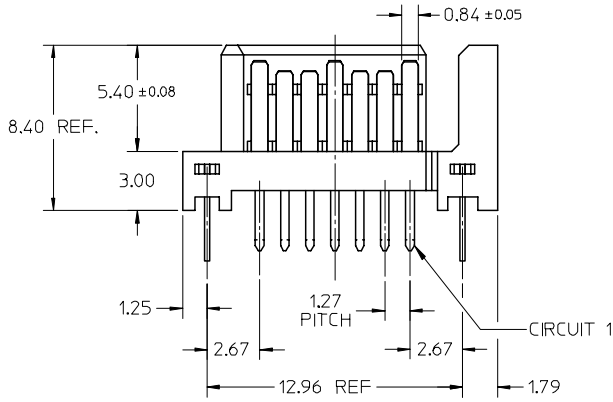
SECTION A-A

D



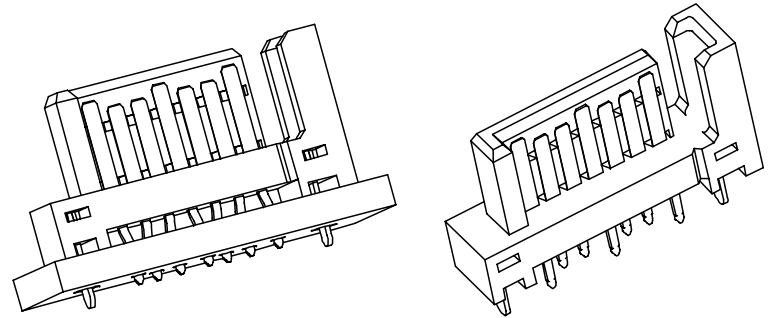
SECTION B-B

C

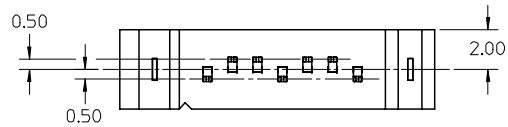


SECTION C-C

B



A



| | | | | | | | | | | | |
|---|-------------------------------|---------------------------------------|----------------------|--------------------------------------|----------------------|------------------------------------|------------------------|--|--|--|--|
| ADD PART NUMBER EC NO: SH2007-0895 DRWN: BCHENZ6 CHKD: JTIAN APPR: INCHEM 2007/06/15 2007/06/18 2007/06/22 | QUALITY SYMBOLS ▽=0 ▽=0 | GENERAL TOLERANCES (UNLESS SPECIFIED) | | DIMENSION STYLE MM ONLY | | SCALE 4:1 | DESIGN UNITS METRIC | THIRD ANGLE PROJECTION | | | |
| | | 4 PLACES ± --- ± --- | 3 PLACES ± --- ± --- | 2 PLACES ± 0.15 ± --- | 1 PLACE ± 0.25 ± --- | ANGLAR ± 3 ° | | DRAFT WHERE APPLICABLE MUST REMAIN WITHIN DIMENSIONS | | | |
| | | DRAWN BY DATE GRATE MA 2004/02/02 | | CHECKED BY DATE YA JUN 2004/02/02 | | APPROVED BY DATE SAM 2004/02/02 | | MOLEX INCORPORATED | | | |
| | | MATERIAL NO. | | DOCUMENT NO. | | SHEET NO. | | 1 OF 2 | | | |

9 8 7 6 5 4 3 2 1

| | 10 | 9 | 8 | 7 | 6 | 5 | 4 | 3 | 2 | 1 | | |
|------------|---------------|---------------|---------|---------|-------------------------------------|--------------------------|--------|---|---|---|--|--|
| | P/N | PLATING TYPE | DIM "A" | DIM "B" | COLOR | SOLDE AREA PLATING | | | | | | |
| F | 67491-0020 | SEE NOTE 2(a) | 2.05 | 2.57 | BLACK | PURE TIN MATTE FINISH | ▽ G | | | | | |
| | 67491-0021 | SEE NOTE 2(b) | | | | | | | | | | |
| | 67491-0022 | SEE NOTE 2(c) | | | | | | | | | | |
| | 67491-0025 | SEE NOTE 2(a) | 2.35 | | | | | | | | | |
| | 67491-0026 | SEE NOTE 2(b) | | | | | | | | | | |
| 67491-0027 | SEE NOTE 2(c) | | | | | | | | | | | |
| E | 67491-2020 | SEE NOTE 2(a) | 2.05 | 3.20 | BLUE PANTONE NO. 293C ΔE<3 | | | | | | | |
| | 67491-2021 | SEE NOTE 2(b) | | | | | | | | | | |
| | 67491-2022 | SEE NOTE 2(c) | | | | | | | | | | |
| | 67491-2025 | SEE NOTE 2(a) | 2.35 | | | | | | | | | |
| | 67491-2026 | SEE NOTE 2(b) | | | | | | | | | | |
| 67491-2027 | SEE NOTE 2(c) | | | | | | | | | | | |
| D | 67491-3010 | SEE NOTE 2(a) | 3.00 | 3.20 | BLACK | | | | | | | |
| | 67491-3011 | SEE NOTE 2(b) | | | | | | | | | | |
| | 67491-3012 | SEE NOTE 2(c) | | | | | | | | | | |
| | 67491-3110 | SEE NOTE 2(a) | 3.00 | | | | | | | | | |
| | 67491-3111 | SEE NOTE 2(b) | | | | | | | | | | |
| 67491-3112 | SEE NOTE 2(c) | | | | | | | | | | | |

| | | | | | | | | | | | | | | |
|---|--|--------------------|-------------------------------|--|--------------|--|--------------------|--|------------------------|------------------------------|---------------------|--|--|--|
| ADD PART NUMBER EC NO: SH2007-0895 DRWN: B. CHENZ6 CHKD: J. TIAN APPR: J. CHEN | 2007/06/15 2007/06/18 2007/06/22 | DESCRIPTION REV | QUALITY SYMBOLS ▽=0 ▽=0 | GENERAL TOLERANCES (UNLESS SPECIFIED) | | DIMENSION STYLE MM ONLY | | SCALE 4:1 | DESIGN UNITS METRIC | THIRD ANGLE PROJECTION | | | | |
| | | | | 4 PLACES ± --- ± --- 3 PLACES ± --- ± --- 2 PLACES ± 0.15 ± --- 1 PLACE ± 0.25 ± --- ANGULAR ± 3 ° | mm INCH | DRAWN BY GRATE MA | DATE 2004/02/02 | TITLE 1.27MM HIGH SPEED PLUG VERTICAL TYPE | | | | | | |
| | | | | | | CHECKED BY YA JUN | DATE 2004/02/02 | MOLEX INCORPORATED | | | | | | |
| | | | | | | APPROVED BY SAM | DATE 2004/02/02 | MATERIAL NO. SEE TABLE | | DOCUMENT NO. SD-67491-001 | SHEET NO. 2 OF 2 | | | |
| | | | | | | DRAFT WHERE APPLICABLE MUST REMAIN WITHIN DIMENSIONS | SIZE A3 | THIS DRAWING CONTAINS INFORMATION THAT IS PROPRIETARY TO MOLEX INCORPORATED AND SHOULD NOT BE USED WITHOUT WRITTEN PERMISSION | | | | | | |