

PLEASE CHECK WWW.MOLEX.COM FOR LATEST PART INFORMATION

Part Number: [0887683530](#)
Status: **Active**
Overview: high definition multimedia interface hdmi
Description: HDMI*-to-DVI-Digital Cable Assembly, 28 AWG, 5.0m (16.40') Length

Documents:

[Drawing \(PDF\)](#) [RoHS Certificate of Compliance \(PDF\)](#)
[Product Specification PS-88768-001 \(PDF\)](#)

General

Product Family	Cable Assemblies
Series	88768
Connector to Connector	HDMI*-to-DVI-Digital
Overview	<u>high definition multimedia interface hdmi</u>
Product Name	HDMI*

Physical

Cable Length	5.0m (16.40')
Circuits (Loaded)	19
Color - Resin	Black, Natural
Gender	Male-Male
Lock to Mating Part	Yes
Material - Metal	High Performance Alloy (HPA), Phosphor Bronze
Material - Plating Mating	Gold
Material - Plating Termination	Tin
Material - Resin	High Temperature Thermoplastic, Low Density Polyethylene, Polyester
Packaging Type	Bag
Pitch - Mating Interface (in)	0.039 In
Pitch - Mating Interface (mm)	1.00 mm
Plating min: Mating (µin)	10, 32
Plating min: Mating (µm)	0.25, 0.8
Plating min: Termination (µin)	150, 50.8
Plating min: Termination (µm)	1.27, 3.75
Single Ended	No
Termination Interface: Style	Solder or Weld, Through Hole
Wire Insulation Diameter	N/A
Wire Size AWG	28
Wire/Cable Type	Round

Electrical

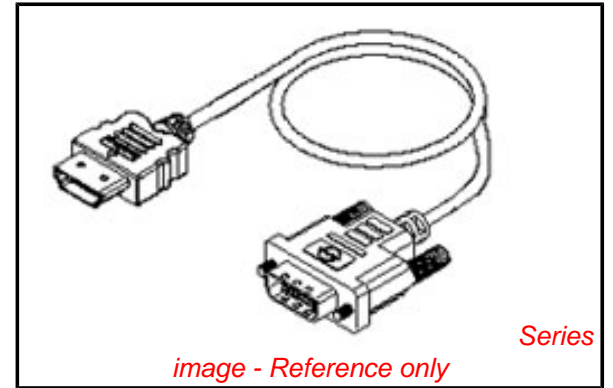
Current - Maximum per Contact	0.5A
Impedance	100 ohms
Shielded	Yes
Voltage - Maximum	40V

Material Info

Reference - Drawing Numbers

Product Specification	PS-88768-001
Sales Drawing	SD-88768-3530, SD-887683530, SD887683530

*High Definition Multimedia Interface and HDMI are trademarks of HDMI Licensing, LLC.



EU RoHS

RoHS Compliant by Exemption

REACH SVHC

Not Reviewed

Halogen-Free

Status

Not Reviewed

Need more information on product environmental compliance?

Email productcompliance@molex.com
 For a multiple part number RoHS Certificate of Compliance, [click here](#)

Please visit the [Contact Us](#) section for any non-product compliance questions.

China RoHS



Search Parts in this Series

88768Series

6

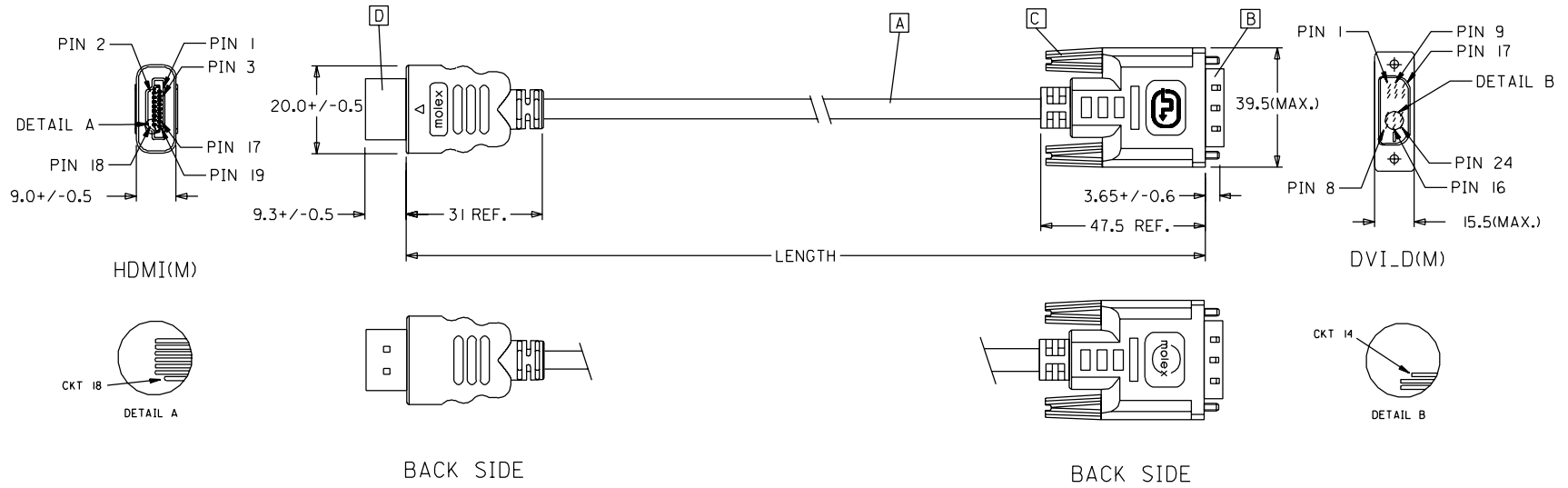
5

4

3

2

1



88768-3620	HDMI TO DVI-D(M) CABLE ASS'Y,3M	3000+/-80	BLACK	5,5MM(TMDS - AWG*30)
88768-3610	HDMI TO DVI-D(M) CABLE ASS'Y,2M	2000+/-60	BLACK	5,5MM(TMDS - AWG*30)
88768-3600	HDMI TO DVI-D(M) CABLE ASS'Y,1M	1000+/-30	BLACK	5,5MM(TMDS - AWG*30)
88768-3530	HDMI TO DVI-D(M) CABLE ASS'Y,5M	5000+/-100	BLACK	7,3MM(TMDS - AWG*28)
88768-3520	HDMI TO DVI-D(M) CABLE ASS'Y,3M	3000+/-80	BLACK	7,3MM(TMDS - AWG*28)
88768-3510	HDMI TO DVI-D(M) CABLE ASS'Y,2M	2000+/-60	BLACK	7,3MM(TMDS - AWG*28)
88768-3500	HDMI TO DVI-D(M) CABLE ASS'Y,1M	1000+/-30	BLACK	7,3MM(TMDS - AWG*28)
MX P/N	DESCRIPTION	LENGTH	CABLE COLOR	CABLE OD

EC NO. DRWN: CHK: APPR:	DESCRIPTION	QUALITY SYMBOLS	GENERAL TOLERANCES: (UNLESS SPECIFIED)		SCALE N.S.T	DESIGN UNITS <input checked="" type="checkbox"/> mm <input type="checkbox"/> INCH	THIRD ANGLE PROJECTION	<input type="checkbox"/> mm INCH	<input type="checkbox"/> mm mm	<input checked="" type="checkbox"/> mm ONLY	SHT	REV	
		MAJOR ▼ = 0 CRITICAL ▽ = 0	4 PLACES ±0. ±.	3 PLACES ±0. ±.	2 PLACES ±0. ±.	1 PLACE ±0. ±.	ANGULAR: ± °	DRAWN BY & DATE Louis Chen 03/11/17	TITLE: HDMI(M) TO DVI-D(M) CABLE ASS'Y		CHECKED BY & DATE Teddy Kan 03/11/17	APPROVED BY & DATE Baron Chen 03/11/17	MATERIAL NO. SEE TABLE
C	REV	THIS DRAWING CONTAINS INFORMATION THAT IS PROPRIETARY TO MOLEX INCORPORATED AND SHOULD NOT BE USED WITHOUT WRITTEN PERMISSION.				CAD FILENAME S88768AA.SOI		MATERIAL NO. SEE TABLE		DRAWING NO. SD-88768-001	SHEET NO. 1 OF 2		SIZE A4

6

5

4

3

2

1

NOTE: 1. OVERMOLD SPECIFICATION

1.1 DVI BOOT MOLDED WITH SNOW WHITE PVC RESIN P/N.

1.1.1 UL94V-0

1.1.2 HARDNESS (DUROMETER): SHORE A 90-95

1.2 HDMI OUTER MOLD WITH BLACK PVC RESIN. UL94V-0.

2. MECHANICAL SPECIFICATION

2.1 CABLE SHOULD STAND THE PULL FORCE 89-11IN FOR 30 SECONDS WITH NO VISIBLE TERMINATION DAMAGE.

2.2 CABLE SHOULD PASS THE FLEX TEST IN 100 CYCLES AT EACH OF PLANES, PER EIA 364-41, CONDITION 1.

3. CABLE ELECTRICAL SPECIFICATION

3.1 DIELECTRIC STRENGTH: 300V AC FOR 10MS.

3.2 INSULATION RESISTANCE: 10 MEGA Ohms MIN.

3.3 DIFFERENTIAL LINES CHARACTERISTIC IMPEDANCE: 100+/-10 Ohms @TDR.

3.4 CONTACT RESISTANCE: 2 OHMS(MAX.).

3.5 SIGNALS CROSSTALK(FEXT): 5% (MAX.) PER ANSI/EIA-364-90.


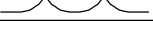






3.6 SIGNALS INTRA-PAIR SKEW : <150 ps.

4. DVI CONNECTOR SPECIFICATION


4.1 REFER TO PRODUCT SPEC. PS74320-0001.

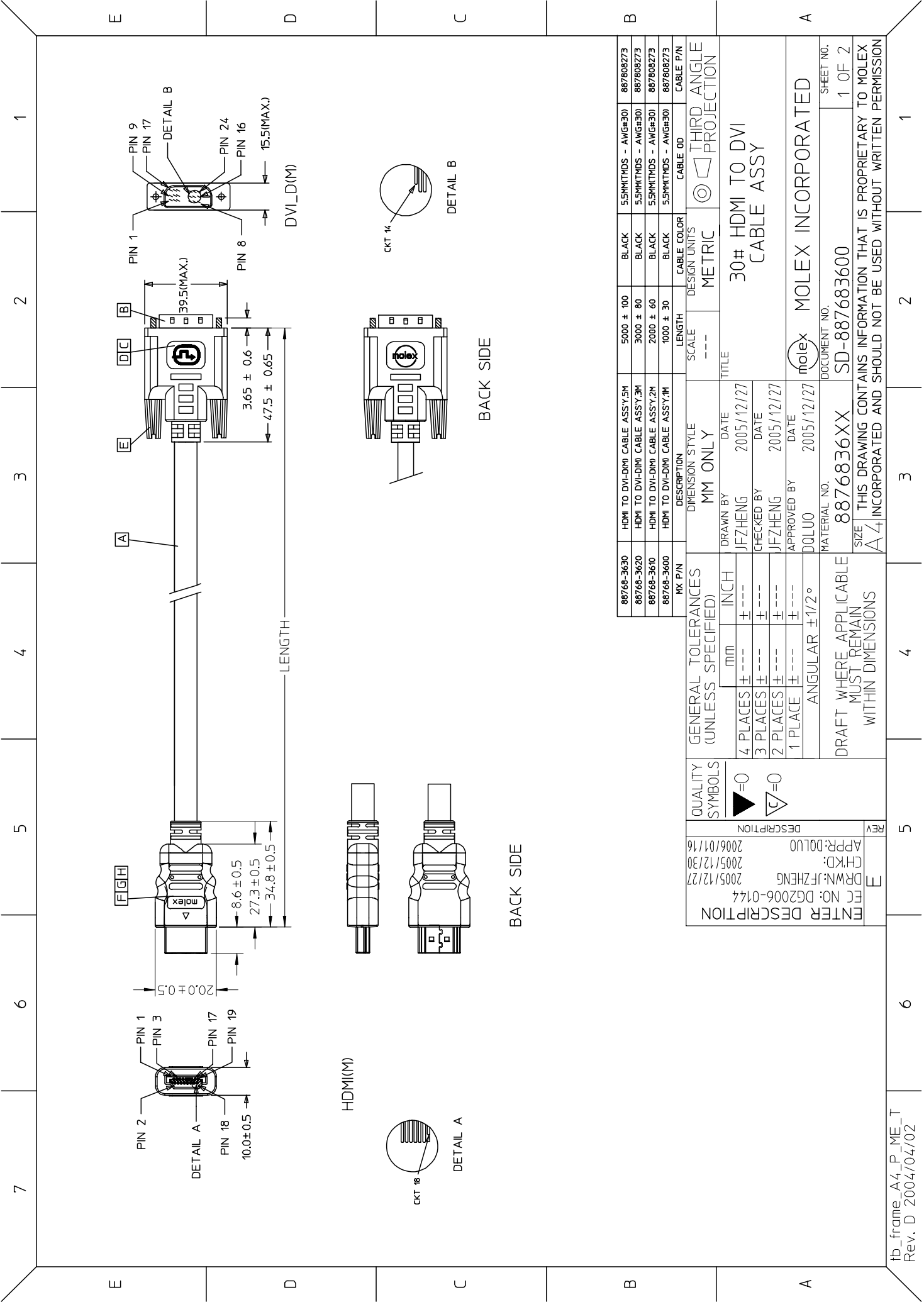
4.2 CONTACT PLATING: AU FLASH.

5. MATERIAL MUST MEET MANAGEMENT REGULATIONS FOR ENVIRONMENT (MX TS-0002).

SHIELD	SHIELD		GROUND
PIN 19	PIN 16	=====	HOT PLUG DETECT
PIN 18	PIN 14	=====	POWER +5V
PIN 17	PIN 15	=====	GROUND(+5V&DDC)
PIN 16	PIN 7	=====	DDC DATA(SDA)
PIN 15	PIN 6	=====	DDC CLOCK(SCL)
PIN 11	PIN 22	=====	TMDS CLOCK SHIELD
PIN 12	PIN 24		TMDS CLOCK-
PIN 10	PIN 23		TMDS CLOCK+
PIN 8	PIN 19	=====	TMDS DATA 0 SHIELD
PIN 9	PIN 17		TMDS DATA 0-
PIN 7	PIN 18		TMDS DATA 0+
PIN 5	PIN 11	=====	TMDS DATA 1 SHIELD
PIN 6	PIN 9		TMDS DATA 1-
PIN 4	PIN 10		TMDS DATA 1+
PIN 2	PIN 3	=====	TMDS DATA 2 SHIELD
PIN 3	PIN 1		TMDS DATA 2-
PIN 1	PIN 2		TMDS DATA 2+
HDMI	DVI-D	COLOR	CABLE FUNCTION

D	HDMI PLUG ASSY'	1
C	DVI THUMB SCREW	2
B	DVI_D SINGLE CHANNEL G/F CONNECTOR	1
A	DVI SINGLE LINK CABLE (SEE TABLE)	1
ITEM	DESCRIPTION	QTY.

EC NO. C	DRWN: CHK: APPR:	DESCRIPTION REV	QUALITY SYMBOLS MAJOR ▼ = 0 CRITICAL ▽ = 5	GENERAL TOLERANCES: (UNLESS SPECIFIED)		SCALE N.S.T	DESIGN UNITS <input checked="" type="checkbox"/> mm <input type="checkbox"/> INCH	THIRD ANGLE PROJECTION 	<input type="checkbox"/> mm INCH <input type="checkbox"/> mm ONLY <input checked="" type="checkbox"/>	SHT	REV
				4 PLACES ±0.	±.	DRAWN BY & DATE Louis Chen 03/11/17	TITLE: HDMI(M) TO DVI-D(M) CABLE ASS'Y			REVISION ON CAD ONLY	
				3 PLACES ±0.	±.	CHECKED BY & DATE Teddy Kan 03/11/17	APPROVED BY & DATE Boron Chen 03/11/17			MOLEX INCORPORATED	
				2 PLACES ±0.	±.	CAD FILENAME S88768AA.S02		MATERIAL NO. SEE TABLE	DRAWING NO. SD-88768-001	SHEET NO. 2 OF 2	
				1 PLACE ±0.	±.	THIS DRAWING CONTAINS INFORMATION THAT IS PROPRIETARY TO MOLEX INCORPORATED AND SHOULD NOT BE USED WITHOUT WRITTEN PERMISSION.					SIZE A4
				ANGULAR: ±	°						



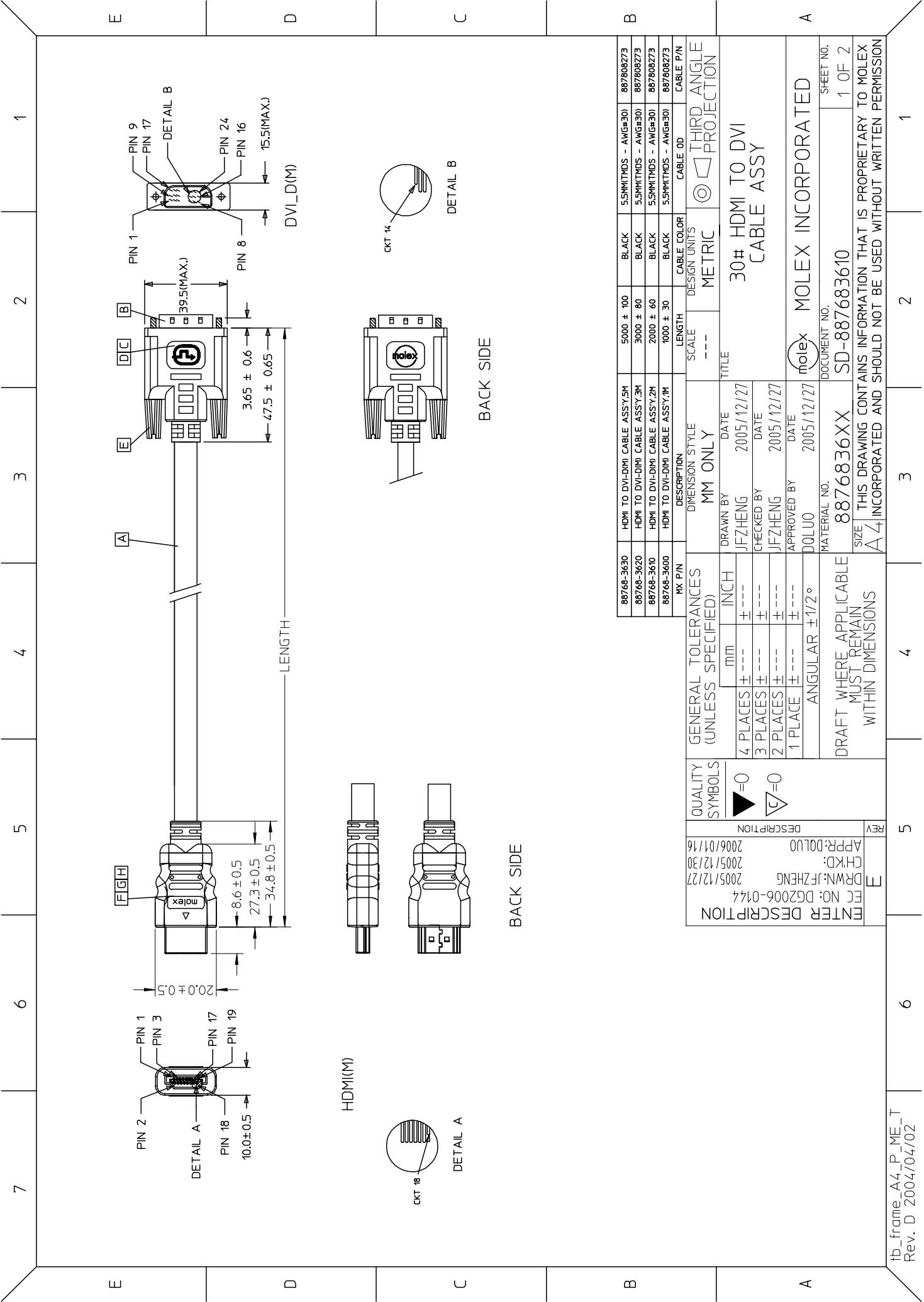
88768-3630	HDMI TO DVI-DIM CABLE ASSY,5M	5000 ± 100	BLACK	5.5MM(TMS - ANG#30)	887808273
88768-3620	HDMI TO DVI-DIM CABLE ASSY,3M	3000 ± 80	BLACK	5.5MM(TMS - ANG#30)	887808273
88768-3610	HDMI TO DVI-DIM CABLE ASSY,2M	2000 ± 60	BLACK	5.5MM(TMS - ANG#30)	887808273
88768-3600	HDMI TO DVI-DIM CABLE ASSY,1M	1000 ± 30	BLACK	5.5MM(TMS - ANG#30)	887808273
MX P/N	DESCRIPTION	LENGTH	CABLE COLOR	CABLE OD	CABLE P/N

GENERAL TOLERANCES (UNLESS SPECIFIED)	MM ONLY	SCALE	DESIGN UNITS	METRIC	THIRD ANGLE PROJECTION
4 PLACES ± ---	INCH	---	MM		
3 PLACES ± ---					
2 PLACES ± ---					
1 PLACE ± ---					
ANGULAR ± 1/2°					
DRAWN BY		DATE	TITLE		
JFZHENG		2005/12/27	30# HDMI TO DVI CABLE ASSY		
CHECKED BY		DATE			
JFZHENG		2005/12/27			
APPROVED BY		DATE			
DQLUO		2005/12/27			

MATERIAL NO.	DOCUMENT NO.	SHEET NO.
8876836XX	SD-887683600	1 OF 2
DRAFT WHERE APPLICABLE MUST REMAIN WITHIN DIMENSIONS		
THIS DRAWING CONTAINS INFORMATION THAT IS PROPRIETARY TO MOLEX INCORPORATED AND SHOULD NOT BE USED WITHOUT WRITTEN PERMISSION		

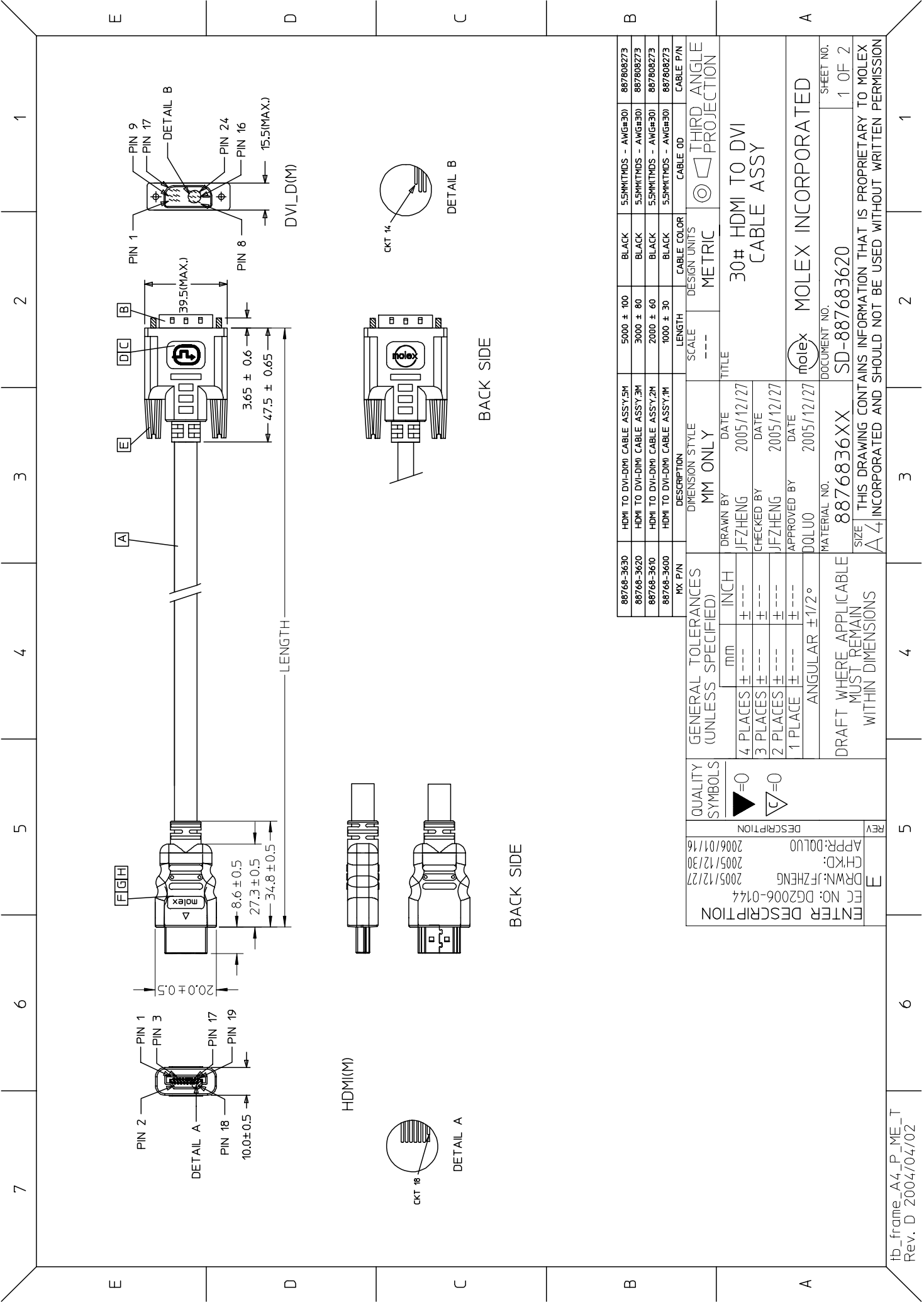
QUALITY SYMBOLS	DESCRIPTION	REV
▶=0	APPR: DQLUO	5
◻=0	CHKD: 2005/12/30	
	DRWN: JFZHENG	
	FIC NO: DG2006-0144	
	ENTR DESCRIPTION	

7	6	5	4	3	2	1																																																																																															
E	<p>OTE:</p> <p>1. OVERMOLD SPECIFICATION:</p> <p>1.1 DVI BOOT MOLDED SNOW WHITE PVC RESIN 887800076E~UL94V-0.</p> <p>1.2 HDMI INNERMOLD WITH BK PVC 887800019.</p> <p>HDMI OVERMOLD WITH PVC 887800150.</p> <p>2. MECHANICAL SPECIFICATION:</p> <p>2.1 CABLE SHOULD STAND THE PULL FORCE 89-111N FOR 30 SECONDS WITH NO VISIBLE TERMINATION DAMAGE.</p> <p>2.2 CABLE SHOULD PASS THE FLEX TEST IN 100 CYCLES AT EACH OF PLANES, PER EIA 364-41, CONDITION 1.</p>																																																																																																				
D	<p>3. PRODUCT ELECTRICAL SPECIFICATION</p> <p>3.1 DIELECTRIC STRENGTH</p> <p>3.2 INSULATION RESISTANCE.</p> <p>3.3 CONDUCTIVE RESISTANCE</p> <p>3.4 TMDS Signals Time Domain Impedence</p> <p>3.5 TMDS Signals Time Domain Crosstalk:FEXT</p> <p>3.6 TMDS Signals Skew</p> <p>3.7 Attenuation</p> <p>REFER TO ES-002 ELECTRICAL SPECIFICATION FOR DETAILS.</p>																																																																																																				
C	<p>4.CABLE CONSTRUCTION</p> <p>(AWG#30*1P+D)*4 + AWG#30*1P + AWG#28*3C, 5.5MMOD'</p> <p>5. DVI CONNECTOR SPECIFICATION</p> <p>5.1 REFER TO PRODUCT SPEC. PS74320-001</p> <p>5.2 CONTACT PLATING</p> <p>6. THIS PRODUCT MUST MEET ROHS COMPLIANCE.</p>																																																																																																				
B	<table border="1"> <thead> <tr> <th>SHIELD</th> <th>SHIELD</th> <th>OVERALL SHIELD</th> <th>GROUND</th> <th>CABLE FUNCTION</th> </tr> </thead> <tbody> <tr><td>PIN 19</td><td>PIN 16</td><td>WHITE</td><td>HOT PLUG DETECT</td><td></td></tr> <tr><td>PIN 18</td><td>PIN 14</td><td>YELLOW</td><td>POWER +5V</td><td></td></tr> <tr><td>PIN 17</td><td>PIN 15</td><td>ORANGE</td><td>GROUND(+5V&DDC)</td><td></td></tr> <tr><td>PIN 16</td><td>PIN 7</td><td>RED</td><td>DDC DATA(SDA)</td><td></td></tr> <tr><td>PIN 15</td><td>PIN 6</td><td>VIOLET</td><td>DDC CLOCK(SCL)</td><td></td></tr> <tr><td>PIN 12</td><td>PIN 24</td><td>WHITE</td><td>TMDS CLOCK-</td><td></td></tr> <tr><td>PIN 11</td><td>PIN 22</td><td>BRAID</td><td>TMDS CLOCK SHIELD</td><td></td></tr> <tr><td>PIN 10</td><td>PIN 23</td><td>BROWN</td><td>TMDS CLOCK+</td><td></td></tr> <tr><td>PIN 9</td><td>PIN 17</td><td>WHITE</td><td>TMDS DATA 0-</td><td></td></tr> <tr><td>PIN 8</td><td>PIN 19</td><td>BRAID</td><td>TMDS DATA 0 SHIELD</td><td></td></tr> <tr><td>PIN 7</td><td>PIN 18</td><td>BLUE</td><td>TMDS DATA 0+</td><td></td></tr> <tr><td>PIN 6</td><td>PIN 9</td><td>WHITE</td><td>TMDS DATA 1-</td><td></td></tr> <tr><td>PIN 5</td><td>PIN 11</td><td>BRAID</td><td>TMDS DATA 1 SHIELD</td><td></td></tr> <tr><td>PIN 4</td><td>PIN 10</td><td>GREEN</td><td>TMDS DATA 1+</td><td></td></tr> <tr><td>PIN 3</td><td>PIN 1</td><td>WHITE</td><td>TMDS DATA 2-</td><td></td></tr> <tr><td>PIN 2</td><td>PIN 3</td><td>BRAID</td><td>TMDS DATA 2 SHIELD</td><td></td></tr> <tr><td>PIN 1</td><td>PIN 2</td><td>RED</td><td>TMDS DATA 2+</td><td></td></tr> <tr><td>HDMI</td><td>DVI-D</td><td>COLOR</td><td></td><td></td></tr> </tbody> </table>						SHIELD	SHIELD	OVERALL SHIELD	GROUND	CABLE FUNCTION	PIN 19	PIN 16	WHITE	HOT PLUG DETECT		PIN 18	PIN 14	YELLOW	POWER +5V		PIN 17	PIN 15	ORANGE	GROUND(+5V&DDC)		PIN 16	PIN 7	RED	DDC DATA(SDA)		PIN 15	PIN 6	VIOLET	DDC CLOCK(SCL)		PIN 12	PIN 24	WHITE	TMDS CLOCK-		PIN 11	PIN 22	BRAID	TMDS CLOCK SHIELD		PIN 10	PIN 23	BROWN	TMDS CLOCK+		PIN 9	PIN 17	WHITE	TMDS DATA 0-		PIN 8	PIN 19	BRAID	TMDS DATA 0 SHIELD		PIN 7	PIN 18	BLUE	TMDS DATA 0+		PIN 6	PIN 9	WHITE	TMDS DATA 1-		PIN 5	PIN 11	BRAID	TMDS DATA 1 SHIELD		PIN 4	PIN 10	GREEN	TMDS DATA 1+		PIN 3	PIN 1	WHITE	TMDS DATA 2-		PIN 2	PIN 3	BRAID	TMDS DATA 2 SHIELD		PIN 1	PIN 2	RED	TMDS DATA 2+		HDMI	DVI-D	COLOR		
SHIELD	SHIELD	OVERALL SHIELD	GROUND	CABLE FUNCTION																																																																																																	
PIN 19	PIN 16	WHITE	HOT PLUG DETECT																																																																																																		
PIN 18	PIN 14	YELLOW	POWER +5V																																																																																																		
PIN 17	PIN 15	ORANGE	GROUND(+5V&DDC)																																																																																																		
PIN 16	PIN 7	RED	DDC DATA(SDA)																																																																																																		
PIN 15	PIN 6	VIOLET	DDC CLOCK(SCL)																																																																																																		
PIN 12	PIN 24	WHITE	TMDS CLOCK-																																																																																																		
PIN 11	PIN 22	BRAID	TMDS CLOCK SHIELD																																																																																																		
PIN 10	PIN 23	BROWN	TMDS CLOCK+																																																																																																		
PIN 9	PIN 17	WHITE	TMDS DATA 0-																																																																																																		
PIN 8	PIN 19	BRAID	TMDS DATA 0 SHIELD																																																																																																		
PIN 7	PIN 18	BLUE	TMDS DATA 0+																																																																																																		
PIN 6	PIN 9	WHITE	TMDS DATA 1-																																																																																																		
PIN 5	PIN 11	BRAID	TMDS DATA 1 SHIELD																																																																																																		
PIN 4	PIN 10	GREEN	TMDS DATA 1+																																																																																																		
PIN 3	PIN 1	WHITE	TMDS DATA 2-																																																																																																		
PIN 2	PIN 3	BRAID	TMDS DATA 2 SHIELD																																																																																																		
PIN 1	PIN 2	RED	TMDS DATA 2+																																																																																																		
HDMI	DVI-D	COLOR																																																																																																			
A	<table border="1"> <thead> <tr> <th>ITEM</th> <th>DESCRIPTION</th> <th>SCALE</th> <th>DESIGN UNITS</th> <th>THIRD ANGLE PROJECTION</th> <th>QTY.</th> </tr> </thead> <tbody> <tr><td>H</td><td>SMALL METAL PLATED 47152-6009</td><td>---</td><td>METRIC</td><td>☉</td><td>1</td></tr> <tr><td>G</td><td>HDMI METAL CAN 47152-4001</td><td>---</td><td>METRIC</td><td>☉</td><td>1</td></tr> <tr><td>F</td><td>HDMI HOUSING ASSY' 47152-1100</td><td>---</td><td>METRIC</td><td>☉</td><td>1</td></tr> <tr><td>E</td><td>DVI THUMB SCREW 887806077</td><td>---</td><td>METRIC</td><td>☉</td><td>2</td></tr> <tr><td>D</td><td>PCB 887899569/887899570</td><td>---</td><td>METRIC</td><td>☉</td><td>1</td></tr> <tr><td>C</td><td>ONE BODY CAN 887899396</td><td>---</td><td>METRIC</td><td>☉</td><td>1</td></tr> <tr><td>B</td><td>DVI_D SINGLE CHANNEL G/F CONNECTOR 743230001</td><td>---</td><td>METRIC</td><td>☉</td><td>1</td></tr> <tr><td>A</td><td>DVI SINGLE LINK CABLE (SEE TABLE)</td><td>---</td><td>METRIC</td><td>☉</td><td>1</td></tr> </tbody> </table>						ITEM	DESCRIPTION	SCALE	DESIGN UNITS	THIRD ANGLE PROJECTION	QTY.	H	SMALL METAL PLATED 47152-6009	---	METRIC	☉	1	G	HDMI METAL CAN 47152-4001	---	METRIC	☉	1	F	HDMI HOUSING ASSY' 47152-1100	---	METRIC	☉	1	E	DVI THUMB SCREW 887806077	---	METRIC	☉	2	D	PCB 887899569/887899570	---	METRIC	☉	1	C	ONE BODY CAN 887899396	---	METRIC	☉	1	B	DVI_D SINGLE CHANNEL G/F CONNECTOR 743230001	---	METRIC	☉	1	A	DVI SINGLE LINK CABLE (SEE TABLE)	---	METRIC	☉	1																																									
ITEM	DESCRIPTION	SCALE	DESIGN UNITS	THIRD ANGLE PROJECTION	QTY.																																																																																																
H	SMALL METAL PLATED 47152-6009	---	METRIC	☉	1																																																																																																
G	HDMI METAL CAN 47152-4001	---	METRIC	☉	1																																																																																																
F	HDMI HOUSING ASSY' 47152-1100	---	METRIC	☉	1																																																																																																
E	DVI THUMB SCREW 887806077	---	METRIC	☉	2																																																																																																
D	PCB 887899569/887899570	---	METRIC	☉	1																																																																																																
C	ONE BODY CAN 887899396	---	METRIC	☉	1																																																																																																
B	DVI_D SINGLE CHANNEL G/F CONNECTOR 743230001	---	METRIC	☉	1																																																																																																
A	DVI SINGLE LINK CABLE (SEE TABLE)	---	METRIC	☉	1																																																																																																
E	<p>3. PRODUCT ELECTRICAL SPECIFICATION</p> <p>3.1 DIELECTRIC STRENGTH</p> <p>3.2 INSULATION RESISTANCE.</p> <p>3.3 CONDUCTIVE RESISTANCE</p> <p>3.4 TMDS Signals Time Domain Impedence</p> <p>3.5 TMDS Signals Time Domain Crosstalk:FEXT</p> <p>3.6 TMDS Signals Skew</p> <p>3.7 Attenuation</p> <p>REFER TO ES-002 ELECTRICAL SPECIFICATION FOR DETAILS.</p>																																																																																																				
D	<p>4.CABLE CONSTRUCTION</p> <p>(AWG#30*1P+D)*4 + AWG#30*1P + AWG#28*3C, 5.5MMOD'</p> <p>5. DVI CONNECTOR SPECIFICATION</p> <p>5.1 REFER TO PRODUCT SPEC. PS74320-001</p> <p>5.2 CONTACT PLATING</p> <p>6. THIS PRODUCT MUST MEET ROHS COMPLIANCE.</p>																																																																																																				
C	<table border="1"> <thead> <tr> <th>GENERAL TOLERANCES (UNLESS SPECIFIED)</th> <th>mm</th> <th>INCH</th> </tr> </thead> <tbody> <tr><td>4 PLACES</td><td>± 0.15</td><td>± 0.006</td></tr> <tr><td>3 PLACES</td><td>± 0.10</td><td>± 0.004</td></tr> <tr><td>2 PLACES</td><td>± 0.075</td><td>± 0.003</td></tr> <tr><td>1 PLACE</td><td>± 0.05</td><td>± 0.002</td></tr> <tr><td>ANGULAR</td><td>± 1/2°</td><td></td></tr> </tbody> </table>						GENERAL TOLERANCES (UNLESS SPECIFIED)	mm	INCH	4 PLACES	± 0.15	± 0.006	3 PLACES	± 0.10	± 0.004	2 PLACES	± 0.075	± 0.003	1 PLACE	± 0.05	± 0.002	ANGULAR	± 1/2°																																																																														
GENERAL TOLERANCES (UNLESS SPECIFIED)	mm	INCH																																																																																																			
4 PLACES	± 0.15	± 0.006																																																																																																			
3 PLACES	± 0.10	± 0.004																																																																																																			
2 PLACES	± 0.075	± 0.003																																																																																																			
1 PLACE	± 0.05	± 0.002																																																																																																			
ANGULAR	± 1/2°																																																																																																				
B	<table border="1"> <thead> <tr> <th>QUALITY SYMBOLS</th> <th>DESCRIPTION</th> <th>REV</th> </tr> </thead> <tbody> <tr><td>▶=0</td><td></td><td></td></tr> <tr><td>◁=5</td><td></td><td></td></tr> <tr><td>□</td><td></td><td></td></tr> </tbody> </table>						QUALITY SYMBOLS	DESCRIPTION	REV	▶=0			◁=5			□																																																																																					
QUALITY SYMBOLS	DESCRIPTION	REV																																																																																																			
▶=0																																																																																																					
◁=5																																																																																																					
□																																																																																																					
A	<table border="1"> <thead> <tr> <th>GENERAL TOLERANCES (UNLESS SPECIFIED)</th> <th>mm</th> <th>INCH</th> </tr> </thead> <tbody> <tr><td>4 PLACES</td><td>± 0.15</td><td>± 0.006</td></tr> <tr><td>3 PLACES</td><td>± 0.10</td><td>± 0.004</td></tr> <tr><td>2 PLACES</td><td>± 0.075</td><td>± 0.003</td></tr> <tr><td>1 PLACE</td><td>± 0.05</td><td>± 0.002</td></tr> <tr><td>ANGULAR</td><td>± 1/2°</td><td></td></tr> </tbody> </table>						GENERAL TOLERANCES (UNLESS SPECIFIED)	mm	INCH	4 PLACES	± 0.15	± 0.006	3 PLACES	± 0.10	± 0.004	2 PLACES	± 0.075	± 0.003	1 PLACE	± 0.05	± 0.002	ANGULAR	± 1/2°																																																																														
GENERAL TOLERANCES (UNLESS SPECIFIED)	mm	INCH																																																																																																			
4 PLACES	± 0.15	± 0.006																																																																																																			
3 PLACES	± 0.10	± 0.004																																																																																																			
2 PLACES	± 0.075	± 0.003																																																																																																			
1 PLACE	± 0.05	± 0.002																																																																																																			
ANGULAR	± 1/2°																																																																																																				
E	<p>1. OVERMOLD SPECIFICATION:</p> <p>1.1 DVI BOOT MOLDED SNOW WHITE PVC RESIN 887800076E~UL94V-0.</p> <p>1.2 HDMI INNERMOLD WITH BK PVC 887800019.</p> <p>HDMI OVERMOLD WITH PVC 887800150.</p> <p>2. MECHANICAL SPECIFICATION:</p> <p>2.1 CABLE SHOULD STAND THE PULL FORCE 89-111N FOR 30 SECONDS WITH NO VISIBLE TERMINATION DAMAGE.</p> <p>2.2 CABLE SHOULD PASS THE FLEX TEST IN 100 CYCLES AT EACH OF PLANES, PER EIA 364-41, CONDITION 1.</p>																																																																																																				
D	<p>3. PRODUCT ELECTRICAL SPECIFICATION</p> <p>3.1 DIELECTRIC STRENGTH</p> <p>3.2 INSULATION RESISTANCE.</p> <p>3.3 CONDUCTIVE RESISTANCE</p> <p>3.4 TMDS Signals Time Domain Impedence</p> <p>3.5 TMDS Signals Time Domain Crosstalk:FEXT</p> <p>3.6 TMDS Signals Skew</p> <p>3.7 Attenuation</p> <p>REFER TO ES-002 ELECTRICAL SPECIFICATION FOR DETAILS.</p>																																																																																																				
C	<p>4.CABLE CONSTRUCTION</p> <p>(AWG#30*1P+D)*4 + AWG#30*1P + AWG#28*3C, 5.5MMOD'</p> <p>5. DVI CONNECTOR SPECIFICATION</p> <p>5.1 REFER TO PRODUCT SPEC. PS74320-001</p> <p>5.2 CONTACT PLATING</p> <p>6. THIS PRODUCT MUST MEET ROHS COMPLIANCE.</p>																																																																																																				
B	<table border="1"> <thead> <tr> <th>ITEM</th> <th>DESCRIPTION</th> <th>SCALE</th> <th>DESIGN UNITS</th> <th>THIRD ANGLE PROJECTION</th> <th>QTY.</th> </tr> </thead> <tbody> <tr><td>H</td><td>SMALL METAL PLATED 47152-6009</td><td>---</td><td>METRIC</td><td>☉</td><td>1</td></tr> <tr><td>G</td><td>HDMI METAL CAN 47152-4001</td><td>---</td><td>METRIC</td><td>☉</td><td>1</td></tr> <tr><td>F</td><td>HDMI HOUSING ASSY' 47152-1100</td><td>---</td><td>METRIC</td><td>☉</td><td>1</td></tr> <tr><td>E</td><td>DVI THUMB SCREW 887806077</td><td>---</td><td>METRIC</td><td>☉</td><td>2</td></tr> <tr><td>D</td><td>PCB 887899569/887899570</td><td>---</td><td>METRIC</td><td>☉</td><td>1</td></tr> <tr><td>C</td><td>ONE BODY CAN 887899396</td><td>---</td><td>METRIC</td><td>☉</td><td>1</td></tr> <tr><td>B</td><td>DVI_D SINGLE CHANNEL G/F CONNECTOR 743230001</td><td>---</td><td>METRIC</td><td>☉</td><td>1</td></tr> <tr><td>A</td><td>DVI SINGLE LINK CABLE (SEE TABLE)</td><td>---</td><td>METRIC</td><td>☉</td><td>1</td></tr> </tbody> </table>						ITEM	DESCRIPTION	SCALE	DESIGN UNITS	THIRD ANGLE PROJECTION	QTY.	H	SMALL METAL PLATED 47152-6009	---	METRIC	☉	1	G	HDMI METAL CAN 47152-4001	---	METRIC	☉	1	F	HDMI HOUSING ASSY' 47152-1100	---	METRIC	☉	1	E	DVI THUMB SCREW 887806077	---	METRIC	☉	2	D	PCB 887899569/887899570	---	METRIC	☉	1	C	ONE BODY CAN 887899396	---	METRIC	☉	1	B	DVI_D SINGLE CHANNEL G/F CONNECTOR 743230001	---	METRIC	☉	1	A	DVI SINGLE LINK CABLE (SEE TABLE)	---	METRIC	☉	1																																									
ITEM	DESCRIPTION	SCALE	DESIGN UNITS	THIRD ANGLE PROJECTION	QTY.																																																																																																
H	SMALL METAL PLATED 47152-6009	---	METRIC	☉	1																																																																																																
G	HDMI METAL CAN 47152-4001	---	METRIC	☉	1																																																																																																
F	HDMI HOUSING ASSY' 47152-1100	---	METRIC	☉	1																																																																																																
E	DVI THUMB SCREW 887806077	---	METRIC	☉	2																																																																																																
D	PCB 887899569/887899570	---	METRIC	☉	1																																																																																																
C	ONE BODY CAN 887899396	---	METRIC	☉	1																																																																																																
B	DVI_D SINGLE CHANNEL G/F CONNECTOR 743230001	---	METRIC	☉	1																																																																																																
A	DVI SINGLE LINK CABLE (SEE TABLE)	---	METRIC	☉	1																																																																																																
A	<table border="1"> <thead> <tr> <th>GENERAL TOLERANCES (UNLESS SPECIFIED)</th> <th>mm</th> <th>INCH</th> </tr> </thead> <tbody> <tr><td>4 PLACES</td><td>± 0.15</td><td>± 0.006</td></tr> <tr><td>3 PLACES</td><td>± 0.10</td><td>± 0.004</td></tr> <tr><td>2 PLACES</td><td>± 0.075</td><td>± 0.003</td></tr> <tr><td>1 PLACE</td><td>± 0.05</td><td>± 0.002</td></tr> <tr><td>ANGULAR</td><td>± 1/2°</td><td></td></tr> </tbody> </table>						GENERAL TOLERANCES (UNLESS SPECIFIED)	mm	INCH	4 PLACES	± 0.15	± 0.006	3 PLACES	± 0.10	± 0.004	2 PLACES	± 0.075	± 0.003	1 PLACE	± 0.05	± 0.002	ANGULAR	± 1/2°																																																																														
GENERAL TOLERANCES (UNLESS SPECIFIED)	mm	INCH																																																																																																			
4 PLACES	± 0.15	± 0.006																																																																																																			
3 PLACES	± 0.10	± 0.004																																																																																																			
2 PLACES	± 0.075	± 0.003																																																																																																			
1 PLACE	± 0.05	± 0.002																																																																																																			
ANGULAR	± 1/2°																																																																																																				
E	<p>3. PRODUCT ELECTRICAL SPECIFICATION</p> <p>3.1 DIELECTRIC STRENGTH</p> <p>3.2 INSULATION RESISTANCE.</p> <p>3.3 CONDUCTIVE RESISTANCE</p> <p>3.4 TMDS Signals Time Domain Impedence</p> <p>3.5 TMDS Signals Time Domain Crosstalk:FEXT</p> <p>3.6 TMDS Signals Skew</p> <p>3.7 Attenuation</p> <p>REFER TO ES-002 ELECTRICAL SPECIFICATION FOR DETAILS.</p>																																																																																																				
D	<p>4.CABLE CONSTRUCTION</p> <p>(AWG#30*1P+D)*4 + AWG#30*1P + AWG#28*3C, 5.5MMOD'</p> <p>5. DVI CONNECTOR SPECIFICATION</p> <p>5.1 REFER TO PRODUCT SPEC. PS74320-001</p> <p>5.2 CONTACT PLATING</p> <p>6. THIS PRODUCT MUST MEET ROHS COMPLIANCE.</p>																																																																																																				
C	<table border="1"> <thead> <tr> <th>GENERAL TOLERANCES (UNLESS SPECIFIED)</th> <th>mm</th> <th>INCH</th> </tr> </thead> <tbody> <tr><td>4 PLACES</td><td>± 0.15</td><td>± 0.006</td></tr> <tr><td>3 PLACES</td><td>± 0.10</td><td>± 0.004</td></tr> <tr><td>2 PLACES</td><td>± 0.075</td><td>± 0.003</td></tr> <tr><td>1 PLACE</td><td>± 0.05</td><td>± 0.002</td></tr> <tr><td>ANGULAR</td><td>± 1/2°</td><td></td></tr> </tbody> </table>						GENERAL TOLERANCES (UNLESS SPECIFIED)	mm	INCH	4 PLACES	± 0.15	± 0.006	3 PLACES	± 0.10	± 0.004	2 PLACES	± 0.075	± 0.003	1 PLACE	± 0.05	± 0.002	ANGULAR	± 1/2°																																																																														
GENERAL TOLERANCES (UNLESS SPECIFIED)	mm	INCH																																																																																																			
4 PLACES	± 0.15	± 0.006																																																																																																			
3 PLACES	± 0.10	± 0.004																																																																																																			
2 PLACES	± 0.075	± 0.003																																																																																																			
1 PLACE	± 0.05	± 0.002																																																																																																			
ANGULAR	± 1/2°																																																																																																				
B	<table border="1"> <thead> <tr> <th>QUALITY SYMBOLS</th> <th>DESCRIPTION</th> <th>REV</th> </tr> </thead> <tbody> <tr><td>▶=0</td><td></td><td></td></tr> <tr><td>◁=5</td><td></td><td></td></tr> <tr><td>□</td><td></td><td></td></tr> </tbody> </table>						QUALITY SYMBOLS	DESCRIPTION	REV	▶=0			◁=5			□																																																																																					
QUALITY SYMBOLS	DESCRIPTION	REV																																																																																																			
▶=0																																																																																																					
◁=5																																																																																																					
□																																																																																																					
A	<table border="1"> <thead> <tr> <th>GENERAL TOLERANCES (UNLESS SPECIFIED)</th> <th>mm</th> <th>INCH</th> </tr> </thead> <tbody> <tr><td>4 PLACES</td><td>± 0.15</td><td>± 0.006</td></tr> <tr><td>3 PLACES</td><td>± 0.10</td><td>± 0.004</td></tr> <tr><td>2 PLACES</td><td>± 0.075</td><td>± 0.003</td></tr> <tr><td>1 PLACE</td><td>± 0.05</td><td>± 0.002</td></tr> <tr><td>ANGULAR</td><td>± 1/2°</td><td></td></tr> </tbody> </table>						GENERAL TOLERANCES (UNLESS SPECIFIED)	mm	INCH	4 PLACES	± 0.15	± 0.006	3 PLACES	± 0.10	± 0.004	2 PLACES	± 0.075	± 0.003	1 PLACE	± 0.05	± 0.002	ANGULAR	± 1/2°																																																																														
GENERAL TOLERANCES (UNLESS SPECIFIED)	mm	INCH																																																																																																			
4 PLACES	± 0.15	± 0.006																																																																																																			
3 PLACES	± 0.10	± 0.004																																																																																																			
2 PLACES	± 0.075	± 0.003																																																																																																			
1 PLACE	± 0.05	± 0.002																																																																																																			
ANGULAR	± 1/2°																																																																																																				
E	<p>3. PRODUCT ELECTRICAL SPECIFICATION</p> <p>3.1 DIELECTRIC STRENGTH</p> <p>3.2 INSULATION RESISTANCE.</p> <p>3.3 CONDUCTIVE RESISTANCE</p> <p>3.4 TMDS Signals Time Domain Impedence</p> <p>3.5 TMDS Signals Time Domain Crosstalk:FEXT</p> <p>3.6 TMDS Signals Skew</p> <p>3.7 Attenuation</p> <p>REFER TO ES-002 ELECTRICAL SPECIFICATION FOR DETAILS.</p>																																																																																																				
D	<p>4.CABLE CONSTRUCTION</p> <p>(AWG#30*1P+D)*4 + AWG#30*1P + AWG#28*3C, 5.5MMOD'</p> <p>5. DVI CONNECTOR SPECIFICATION</p> <p>5.1 REFER TO PRODUCT SPEC. PS74320-001</p> <p>5.2 CONTACT PLATING</p> <p>6. THIS PRODUCT MUST MEET ROHS COMPLIANCE.</p>																																																																																																				
C	<table border="1"> <thead> <tr> <th>GENERAL TOLERANCES (UNLESS SPECIFIED)</th> <th>mm</th> <th>INCH</th> </tr> </thead> <tbody> <tr><td>4 PLACES</td><td>± 0.15</td><td>± 0.006</td></tr> <tr><td>3 PLACES</td><td>± 0.10</td><td>± 0.004</td></tr> <tr><td>2 PLACES</td><td>± 0.075</td><td>± 0.003</td></tr> <tr><td>1 PLACE</td><td>± 0.05</td><td>± 0.002</td></tr> <tr><td>ANGULAR</td><td>± 1/2°</td><td></td></tr> </tbody> </table>						GENERAL TOLERANCES (UNLESS SPECIFIED)	mm	INCH	4 PLACES	± 0.15	± 0.006	3 PLACES	± 0.10	± 0.004	2 PLACES	± 0.075	± 0.003	1 PLACE	± 0.05	± 0.002	ANGULAR	± 1/2°																																																																														
GENERAL TOLERANCES (UNLESS SPECIFIED)	mm	INCH																																																																																																			
4 PLACES	± 0.15	± 0.006																																																																																																			
3 PLACES	± 0.10	± 0.004																																																																																																			
2 PLACES	± 0.075	± 0.003																																																																																																			
1 PLACE	± 0.05	± 0.002																																																																																																			
ANGULAR	± 1/2°																																																																																																				
B	<table border="1"> <thead> <tr> <th>QUALITY SYMBOLS</th> <th>DESCRIPTION</th> <th>REV</th> </tr> </thead> <tbody> <tr><td>▶=0</td><td></td><td></td></tr> <tr><td>◁=5</td><td></td><td></td></tr> <tr><td>□</td><td></td><td></td></tr> </tbody> </table>						QUALITY SYMBOLS	DESCRIPTION	REV	▶=0			◁=5			□																																																																																					
QUALITY SYMBOLS	DESCRIPTION	REV																																																																																																			
▶=0																																																																																																					
◁=5																																																																																																					
□																																																																																																					
A	<table border="1"> <thead> <tr> <th>GENERAL TOLERANCES (UNLESS SPECIFIED)</th> <th>mm</th> <th>INCH</th> </tr> </thead> <tbody> <tr><td>4 PLACES</td><td>± 0.15</td><td>± 0.006</td></tr> <tr><td>3 PLACES</td><td>± 0.10</td><td>± 0.004</td></tr> <tr><td>2 PLACES</td><td>± 0.075</td><td>± 0.003</td></tr> <tr><td>1 PLACE</td><td>± 0.05</td><td>± 0.002</td></tr> <tr><td>ANGULAR</td><td>± 1/2°</td><td></td></tr> </tbody> </table>						GENERAL TOLERANCES (UNLESS SPECIFIED)	mm	INCH	4 PLACES	± 0.15	± 0.006	3 PLACES	± 0.10	± 0.004	2 PLACES	± 0.075	± 0.003	1 PLACE	± 0.05	± 0.002	ANGULAR	± 1/2°																																																																														
GENERAL TOLERANCES (UNLESS SPECIFIED)	mm	INCH																																																																																																			
4 PLACES	± 0.15	± 0.006																																																																																																			
3 PLACES	± 0.10	± 0.004																																																																																																			
2 PLACES	± 0.075	± 0.003																																																																																																			
1 PLACE	± 0.05	± 0.002																																																																																																			
ANGULAR	± 1/2°																																																																																																				
E	<p>3. PRODUCT ELECTRICAL SPECIFICATION</p> <p>3.1 DIELECTRIC STRENGTH</p> <p>3.2 INSULATION RESISTANCE.</p> <p>3.3 CONDUCTIVE RESISTANCE</p> <p>3.4 TMDS Signals Time Domain Impedence</p> <p>3.5 TMDS Signals Time Domain Crosstalk:FEXT</p> <p>3.6 TMDS Signals Skew</p> <p>3.7 Attenuation</p> <p>REFER TO ES-002 ELECTRICAL SPECIFICATION FOR DETAILS.</p>																																																																																																				
D	<p>4.CABLE CONSTRUCTION</p> <p>(AWG#30*1P+D)*4 + AWG#30*1P + AWG#28*3C, 5.5MMOD'</p> <p>5. DVI CONNECTOR SPECIFICATION</p> <p>5.1 REFER TO PRODUCT SPEC. PS74320-001</p> <p>5.2 CONTACT PLATING</p> <p>6. THIS PRODUCT MUST MEET ROHS COMPLIANCE.</p>																																																																																																				
C	<table border="1"> <thead> <tr> <th>GENERAL TOLERANCES (UNLESS SPECIFIED)</th> <th>mm</th> <th>INCH</th> </tr> </thead> <tbody> <tr><td>4 PLACES</td><td>± 0.15</td><td>± 0.006</td></tr> <tr><td>3 PLACES</td><td>± 0.10</td><td>± 0.004</td></tr> <tr><td>2 PLACES</td><td>± 0.075</td><td>± 0.003</td></tr> <tr><td>1 PLACE</td><td>± 0.05</td><td>± 0.002</td></tr> <tr><td>ANGULAR</td><td>± 1/2°</td><td></td></tr> </tbody> </table>						GENERAL TOLERANCES (UNLESS SPECIFIED)	mm	INCH	4 PLACES	± 0.15	± 0.006	3 PLACES	± 0.10	± 0.004	2 PLACES	± 0.075	± 0.003	1 PLACE	± 0.05	± 0.002	ANGULAR	± 1/2°																																																																														
GENERAL TOLERANCES (UNLESS SPECIFIED)	mm	INCH																																																																																																			
4 PLACES	± 0.15	± 0.006																																																																																																			
3 PLACES	± 0.10	± 0.004																																																																																																			
2 PLACES	± 0.075	± 0.003																																																																																																			
1 PLACE	± 0.05	± 0.002																																																																																																			
ANGULAR	± 1/2°																																																																																																				
B	<table border="1"> <thead> <tr> <th>QUALITY SYMBOLS</th> <th>DESCRIPTION</th> <th>REV</th> </tr> </thead> <tbody> <tr><td>▶=0</td><td></td><td></td></tr> <tr><td>◁=5</td><td></td><td></td></tr> <tr><td>□</td><td></td><td></td></tr> </tbody> </table>						QUALITY SYMBOLS	DESCRIPTION	REV	▶=0			◁=5			□																																																																																					
QUALITY SYMBOLS	DESCRIPTION	REV																																																																																																			
▶=0																																																																																																					
◁=5																																																																																																					
□																																																																																																					
A	<table border="1"> <thead> <tr> <th>GENERAL TOLERANCES (UNLESS SPECIFIED)</th> <th>mm</th> <th>INCH</th> </tr> </thead> <tbody> <tr><td>4 PLACES</td><td>± 0.15</td><td>± 0.006</td></tr> <tr><td>3 PLACES</td><td>± 0.10</td><td>± 0.004</td></tr> <tr><td>2 PLACES</td><td>± 0.075</td><td>± 0.003</td></tr> <tr><td>1 PLACE</td><td>± 0.05</td><td>± 0.002</td></tr> <tr><td>ANGULAR</td><td>± 1/2°</td><td></td></tr> </tbody> </table>						GENERAL TOLERANCES (UNLESS SPECIFIED)	mm	INCH	4 PLACES	± 0.15	± 0.006	3 PLACES	± 0.10	± 0.004	2 PLACES	± 0.075	± 0.003	1 PLACE	± 0.05	± 0.002	ANGULAR	± 1/2°																																																																														
GENERAL TOLERANCES (UNLESS SPECIFIED)	mm	INCH																																																																																																			
4 PLACES	± 0.15	± 0.006																																																																																																			
3 PLACES	± 0.10	± 0.004																																																																																																			
2 PLACES	± 0.075	± 0.003																																																																																																			
1 PLACE	± 0.05	± 0.002																																																																																																			
ANGULAR	± 1/2°																																																																																																				
E	<p>3. PRODUCT ELECTRICAL SPECIFICATION</p> <p>3.1 DIELECTRIC STRENGTH</p> <p>3.2 INSULATION RESISTANCE.</p> <p>3.3 CONDUCTIVE RESISTANCE</p> <p>3.4 TMDS Signals Time Domain Impedence</p> <p>3.5 TMDS Signals Time Domain Crosstalk:FEXT</p> <p>3.6 TMDS Signals Skew</p> <p>3.7 Attenuation</p> <p>REFER TO ES-002 ELECTRICAL SPECIFICATION FOR DETAILS.</p>																																																																																																				
D	<p>4.CABLE CONSTRUCTION</p> <p>(AWG#30*1P+D)*4 + AWG#30*1P + AWG#28*3C, 5.5MMOD'</p> <p>5. DVI CONNECTOR SPECIFICATION</p> <p>5.1 REFER TO PRODUCT SPEC. PS74320-001</p> <p>5.2 CONTACT PLATING</p> <p>6. THIS PRODUCT MUST MEET ROHS COMPLIANCE.</p>																																																																																																				
C	<table border="1"> <thead> <tr> <th>GENERAL TOLERANCES (UNLESS SPECIFIED)</th> <th>mm</th> <th>INCH</th> </tr> </thead> <tbody> <tr><td>4 PLACES</td><td>± 0.15</td><td>± 0.006</td></tr> <tr><td>3 PLACES</td><td>± 0.10</td><td>± 0.004</td></tr> <tr><td>2 PLACES</td><td>± 0.075</td><td>± 0.003</td></tr> <tr><td>1 PLACE</td><td>± 0.05</td><td>± 0.002</td></tr> <tr><td>ANGULAR</td><td>± 1/2°</td><td></td></tr> </tbody> </table>						GENERAL TOLERANCES (UNLESS SPECIFIED)	mm	INCH	4 PLACES	± 0.15	± 0.006	3 PLACES	± 0.10	± 0.004	2 PLACES	± 0.075	± 0.003	1 PLACE	± 0.05	± 0.002	ANGULAR	± 1/2°																																																																														
GENERAL TOLERANCES (UNLESS SPECIFIED)	mm	INCH																																																																																																			
4 PLACES	± 0.15	± 0.006																																																																																																			
3 PLACES	± 0.10	± 0.004																																																																																																			
2 PLACES	± 0.075	± 0.003																																																																																																			
1 PLACE	± 0.05	± 0.002																																																																																																			
ANGULAR	± 1/2°																																																																																																				
B	<table border="1"> <thead> <tr> <th>QUALITY SYMBOLS</th> <th>DESCRIPTION</th> <th>REV</th> </tr> </thead> <tbody> <tr><td>▶=0</td><td></td><td></td></tr> <tr><td>◁=5</td><td></td><td></td></tr> <tr><td>□</td><td></td><td></td></tr> </tbody> </table>						QUALITY SYMBOLS	DESCRIPTION	REV	▶=0			◁=5			□																																																																																					
QUALITY SYMBOLS	DESCRIPTION	REV																																																																																																			
▶=0																																																																																																					
◁=5																																																																																																					
□																																																																																																					
A	<table border="1"> <thead> <tr> <th>GENERAL TOLERANCES (UNLESS SPECIFIED)</th> <th>mm</th> <th>INCH</th> </tr> </thead> <tbody> <tr><td>4 PLACES</td><td>± 0.15</td><td>± 0.006</td></tr> <tr><td>3 PLACES</td><td>± 0.10</td><td>± 0.004</td></tr> <tr><td>2 PLACES</td><td>± 0.075</td><td>± 0.003</td></tr> <tr><td>1 PLACE</td><td>± 0.05</td><td>± 0.002</td></tr> <tr><td>ANGULAR</td><td>± 1/2°</td><td></td></tr> </tbody> </table>						GENERAL TOLERANCES (UNLESS SPECIFIED)	mm	INCH	4 PLACES	± 0.15	± 0.006	3 PLACES	± 0.10	± 0.004	2 PLACES	± 0.075	± 0.003	1 PLACE	± 0.05	± 0.002	ANGULAR	± 1/2°																																																																														
GENERAL TOLERANCES (UNLESS SPECIFIED)	mm	INCH																																																																																																			
4 PLACES	± 0.15	± 0.006																																																																																																			
3 PLACES	± 0.10	± 0.004																																																																																																			
2 PLACES	± 0.075	± 0.003																																																																																																			
1 PLACE	± 0.05	± 0.002																																																																																																			
ANGULAR	± 1/2°																																																																																																				



88768-3630	HDMI TO DVI-DIM CABLE ASSY,5M	5000 ± 100	BLACK	5.5MMTMS - AWG#30	887808273
88768-3620	HDMI TO DVI-DIM CABLE ASSY,3M	3000 ± 80	BLACK	5.5MMTMS - AWG#30	887808273
88768-3610	HDMI TO DVI-DIM CABLE ASSY,2M	2000 ± 60	BLACK	5.5MMTMS - AWG#30	887808273
88768-3600	HDMI TO DVI-DIM CABLE ASSY,1M	1000 ± 30	BLACK	5.5MMTMS - AWG#30	887808273
MX P/N	DESCRIPTION	LENGTH	CABLE COLOR	CABLE OD	CABLE P/N

GENERAL TOLERANCES (UNLESS SPECIFIED)	MM ONLY	SCALE	DESIGN UNITS	METRIC	THIRD ANGLE PROJECTION
4 PLACES ± ---	INCH	---	MM		
3 PLACES ± ---					
2 PLACES ± ---					
1 PLACE ± ---					
ANGULAR ± 1/2°					
DRAWN BY		DATE	TITLE		
JFZHENG		2005/12/27	30# HDMI TO DVI CABLE ASSY		
CHECKED BY		DATE			
JFZHENG		2005/12/27			
APPROVED BY		DATE			
DQLUO		2005/12/27			
MATERIAL NO.		DOCUMENT NO.	SHEET NO.		
8876836XX		SD-887683610	1 OF 2		
DRAFT WHERE APPLICABLE MUST REMAIN WITHIN DIMENSIONS					
THIS DRAWING CONTAINS INFORMATION THAT IS PROPRIETARY TO MOLEX INCORPORATED AND SHOULD NOT BE USED WITHOUT WRITTEN PERMISSION					



88768-3630	HDMI TO DVI-DIM CABLE ASSY,5M	5000 ± 100	BLACK	5.5MM(TMS - ANG#30)	887808273
88768-3620	HDMI TO DVI-DIM CABLE ASSY,3M	3000 ± 80	BLACK	5.5MM(TMS - ANG#30)	887808273
88768-3610	HDMI TO DVI-DIM CABLE ASSY,2M	2000 ± 60	BLACK	5.5MM(TMS - ANG#30)	887808273
88768-3600	HDMI TO DVI-DIM CABLE ASSY,1M	1000 ± 30	BLACK	5.5MM(TMS - ANG#30)	887808273
MX P/N	DESCRIPTION	LENGTH	CABLE COLOR	CABLE OD	CABLE P/N

QUALITY SYMBOLS	GENERAL TOLERANCES (UNLESS SPECIFIED)	DIMENSION STYLE	SCALE	DESIGN UNITS	THIRD ANGLE PROJECTION
4 PLACES ± ---	mm	MM ONLY	---	METRIC	
3 PLACES ± ---	INCH	DRAWN BY	DATE	TITLE	
2 PLACES ± ---		JFZHENG	2005/12/27	30# HDMI TO DVI CABLE ASSY	
1 PLACE ± ---		CHECKED BY	DATE		
ANGULAR ± 1/2°		JFZHENG	2005/12/27		
		APPROVED BY	DATE		
		DQLUO	2005/12/27		
		MATERIAL NO.	DOCUMENT NO.		
		8876836XX	SD-887683620		
		DRAFT WHERE APPLICABLE MUST REMAIN WITHIN DIMENSIONS			
		SIZE THIS DRAWING CONTAINS INFORMATION THAT IS PROPRIETARY TO MOLEX INCORPORATED AND SHOULD NOT BE USED WITHOUT WRITTEN PERMISSION			
		A4			
		MOLEX INCORPORATED			
		SHEET NO. 1 OF 2			

7	6	5	4	3	2	1																																																																												
E	<p>OTE:</p> <p>1. OVERMOLD SPECIFICATION: 1.1 DVI BOOT MOLDED SNOW WHITE PVC RESIN 887800076E~UL94V-0. 1.2 HDMI INNERMOLD WITH BK PVC 887800019. HDMI OVERMOLD WITH PVC 887800150.</p> <p>2. MECHANICAL SPECIFICATION: 2.1 CABLE SHOULD STAND THE PULL FORCE 89-111N FOR 30 SECONDS WITH NO VISIBLE TERMINATION DAMAGE. 2.2 CABLE SHOULD PASS THE FLEX TEST IN 100 CYCLES AT EACH OF PLANES, PER EIA 364-41, CONDITION 1.</p>																																																																																	
D	<p>3. PRODUCT ELECTRICAL SPECIFICATION</p> <p>3.1 DIELECTRIC STRENGTH</p> <p>3.2 INSULATION RESISTANCE.</p> <p>3.3 CONDUCTIVE RESISTANCE</p> <p>3.4 TMDS Signals Time Domain Impedence</p> <p>3.5 TMDS Signals Time Domain Crosstalk:FEXT</p> <p>3.6 TMDS Signals Skew</p> <p>3.7 Attenuation</p> <p>REFER TO ES-002 ELECTRICAL SPECIFICATION FOR DETAILS.</p>																																																																																	
C	<p>4.CABLE CONSTRUCTION</p> <p>(AWG#30*1P+D)*4 + AWG#30*1P + AWG#28*3C, 5.5MMOD'</p> <p>5. DVI CONNECTOR SPECIFICATION</p> <p>5.1 REFER TO PRODUCT SPEC. PS74320-001</p> <p>5.2 CONTACT PLATING</p> <p>6. THIS PRODUCT MUST MEET ROHS COMPLIANCE.</p>																																																																																	
B	<table border="1"> <thead> <tr> <th>SHIELD</th> <th>SHIELD</th> <th>OVERALL SHIELD</th> <th>GROUND</th> </tr> </thead> <tbody> <tr><td>PIN 19</td><td>PIN 16</td><td>WHITE</td><td>HOT PLUG DETECT</td></tr> <tr><td>PIN 18</td><td>PIN 14</td><td>YELLOW</td><td>POWER +5V</td></tr> <tr><td>PIN 17</td><td>PIN 15</td><td>ORANGE</td><td>GROUND(+5V&DDC)</td></tr> <tr><td>PIN 16</td><td>PIN 7</td><td>RED</td><td>DDC DATA(SDA)</td></tr> <tr><td>PIN 15</td><td>PIN 6</td><td>VIOLET</td><td>DDC CLOCK(SCL)</td></tr> <tr><td>PIN 12</td><td>PIN 24</td><td>WHITE</td><td>TMDS CLOCK-</td></tr> <tr><td>PIN 11</td><td>PIN 22</td><td>BRAID</td><td>TMDS CLOCK SHIELD</td></tr> <tr><td>PIN 10</td><td>PIN 23</td><td>BROWN</td><td>TMDS CLOCK+</td></tr> <tr><td>PIN 9</td><td>PIN 17</td><td>WHITE</td><td>TMDS DATA 0-</td></tr> <tr><td>PIN 8</td><td>PIN 19</td><td>BRAID</td><td>TMDS DATA 0 SHIELD</td></tr> <tr><td>PIN 7</td><td>PIN 18</td><td>BLUE</td><td>TMDS DATA 0+</td></tr> <tr><td>PIN 6</td><td>PIN 9</td><td>WHITE</td><td>TMDS DATA 1-</td></tr> <tr><td>PIN 5</td><td>PIN 11</td><td>BRAID</td><td>TMDS DATA 1 SHIELD</td></tr> <tr><td>PIN 4</td><td>PIN 10</td><td>GREEN</td><td>TMDS DATA 1+</td></tr> <tr><td>PIN 3</td><td>PIN 1</td><td>WHITE</td><td>TMDS DATA 2-</td></tr> <tr><td>PIN 2</td><td>PIN 3</td><td>BRAID</td><td>TMDS DATA 2 SHIELD</td></tr> <tr><td>PIN 1</td><td>PIN 2</td><td>RED</td><td>TMDS DATA 2+</td></tr> <tr><td>HDMI</td><td>DVI-D</td><td>COLOR</td><td>CABLE FUNCTION</td></tr> </tbody> </table>						SHIELD	SHIELD	OVERALL SHIELD	GROUND	PIN 19	PIN 16	WHITE	HOT PLUG DETECT	PIN 18	PIN 14	YELLOW	POWER +5V	PIN 17	PIN 15	ORANGE	GROUND(+5V&DDC)	PIN 16	PIN 7	RED	DDC DATA(SDA)	PIN 15	PIN 6	VIOLET	DDC CLOCK(SCL)	PIN 12	PIN 24	WHITE	TMDS CLOCK-	PIN 11	PIN 22	BRAID	TMDS CLOCK SHIELD	PIN 10	PIN 23	BROWN	TMDS CLOCK+	PIN 9	PIN 17	WHITE	TMDS DATA 0-	PIN 8	PIN 19	BRAID	TMDS DATA 0 SHIELD	PIN 7	PIN 18	BLUE	TMDS DATA 0+	PIN 6	PIN 9	WHITE	TMDS DATA 1-	PIN 5	PIN 11	BRAID	TMDS DATA 1 SHIELD	PIN 4	PIN 10	GREEN	TMDS DATA 1+	PIN 3	PIN 1	WHITE	TMDS DATA 2-	PIN 2	PIN 3	BRAID	TMDS DATA 2 SHIELD	PIN 1	PIN 2	RED	TMDS DATA 2+	HDMI	DVI-D	COLOR	CABLE FUNCTION
SHIELD	SHIELD	OVERALL SHIELD	GROUND																																																																															
PIN 19	PIN 16	WHITE	HOT PLUG DETECT																																																																															
PIN 18	PIN 14	YELLOW	POWER +5V																																																																															
PIN 17	PIN 15	ORANGE	GROUND(+5V&DDC)																																																																															
PIN 16	PIN 7	RED	DDC DATA(SDA)																																																																															
PIN 15	PIN 6	VIOLET	DDC CLOCK(SCL)																																																																															
PIN 12	PIN 24	WHITE	TMDS CLOCK-																																																																															
PIN 11	PIN 22	BRAID	TMDS CLOCK SHIELD																																																																															
PIN 10	PIN 23	BROWN	TMDS CLOCK+																																																																															
PIN 9	PIN 17	WHITE	TMDS DATA 0-																																																																															
PIN 8	PIN 19	BRAID	TMDS DATA 0 SHIELD																																																																															
PIN 7	PIN 18	BLUE	TMDS DATA 0+																																																																															
PIN 6	PIN 9	WHITE	TMDS DATA 1-																																																																															
PIN 5	PIN 11	BRAID	TMDS DATA 1 SHIELD																																																																															
PIN 4	PIN 10	GREEN	TMDS DATA 1+																																																																															
PIN 3	PIN 1	WHITE	TMDS DATA 2-																																																																															
PIN 2	PIN 3	BRAID	TMDS DATA 2 SHIELD																																																																															
PIN 1	PIN 2	RED	TMDS DATA 2+																																																																															
HDMI	DVI-D	COLOR	CABLE FUNCTION																																																																															
A	<table border="1"> <thead> <tr> <th>ITEM</th> <th>DESCRIPTION</th> <th>SCALE</th> <th>DESIGN UNITS</th> <th>THIRD ANGLE PROJECTION</th> <th>QTY.</th> </tr> </thead> <tbody> <tr><td>H</td><td>SMALL METAL PLATED 47152-6009</td><td>---</td><td>METRIC</td><td></td><td>1</td></tr> <tr><td>G</td><td>HDMI METAL CAN 47152-4001</td><td>---</td><td>METRIC</td><td></td><td>1</td></tr> <tr><td>F</td><td>HDMI HOUSING ASSY' 47152-1100</td><td>---</td><td>METRIC</td><td></td><td>1</td></tr> <tr><td>E</td><td>DVI THUMB SCREW 887806077</td><td>---</td><td>METRIC</td><td></td><td>2</td></tr> <tr><td>D</td><td>PCB 887899569/887899570</td><td>---</td><td>METRIC</td><td></td><td>1</td></tr> <tr><td>C</td><td>ONE BODY CAN 887899396</td><td>---</td><td>METRIC</td><td></td><td>1</td></tr> <tr><td>B</td><td>DVI_D SINGLE CHANNEL G/F CONNECTOR 743230001</td><td>---</td><td>METRIC</td><td></td><td>1</td></tr> <tr><td>A</td><td>DVI SINGLE LINK CABLE (SEE TABLE)</td><td>---</td><td>METRIC</td><td></td><td>1</td></tr> </tbody> </table>						ITEM	DESCRIPTION	SCALE	DESIGN UNITS	THIRD ANGLE PROJECTION	QTY.	H	SMALL METAL PLATED 47152-6009	---	METRIC		1	G	HDMI METAL CAN 47152-4001	---	METRIC		1	F	HDMI HOUSING ASSY' 47152-1100	---	METRIC		1	E	DVI THUMB SCREW 887806077	---	METRIC		2	D	PCB 887899569/887899570	---	METRIC		1	C	ONE BODY CAN 887899396	---	METRIC		1	B	DVI_D SINGLE CHANNEL G/F CONNECTOR 743230001	---	METRIC		1	A	DVI SINGLE LINK CABLE (SEE TABLE)	---	METRIC		1																						
ITEM	DESCRIPTION	SCALE	DESIGN UNITS	THIRD ANGLE PROJECTION	QTY.																																																																													
H	SMALL METAL PLATED 47152-6009	---	METRIC		1																																																																													
G	HDMI METAL CAN 47152-4001	---	METRIC		1																																																																													
F	HDMI HOUSING ASSY' 47152-1100	---	METRIC		1																																																																													
E	DVI THUMB SCREW 887806077	---	METRIC		2																																																																													
D	PCB 887899569/887899570	---	METRIC		1																																																																													
C	ONE BODY CAN 887899396	---	METRIC		1																																																																													
B	DVI_D SINGLE CHANNEL G/F CONNECTOR 743230001	---	METRIC		1																																																																													
A	DVI SINGLE LINK CABLE (SEE TABLE)	---	METRIC		1																																																																													

3. PRODUCT ELECTRICAL SPECIFICATION

3.1 DIELECTRIC STRENGTH

3.2 INSULATION RESISTANCE.

3.3 CONDUCTIVE RESISTANCE

3.4 TMDS Signals Time Domain Impedence

3.5 TMDS Signals Time Domain Crosstalk:FEXT

3.6 TMDS Signals Skew

3.7 Attenuation

REFER TO ES-002 ELECTRICAL SPECIFICATION FOR DETAILS.

4.CABLE CONSTRUCTION

(AWG#30*1P+D)*4 + AWG#30*1P + AWG#28*3C, 5.5MMOD'

5. DVI CONNECTOR SPECIFICATION

5.1 REFER TO PRODUCT SPEC. PS74320-001

5.2 CONTACT PLATING

6. THIS PRODUCT MUST MEET ROHS COMPLIANCE.

GENERAL TOLERANCES (UNLESS SPECIFIED)

4 PLACES ± .005

3 PLACES ± .005

2 PLACES ± .005

1 PLACE ± .005

ANGULAR ± 1/2°

DRAFT WHERE APPLICABLE MUST REMAIN WITHIN DIMENSIONS

QUALITY SYMBOLS

DESCRIPTION

QUALITY SYMBOLS

4 PLACES ± .005

3 PLACES ± .005

2 PLACES ± .005

1 PLACE ± .005

ANGULAR ± 1/2°

DRAFT WHERE APPLICABLE MUST REMAIN WITHIN DIMENSIONS

QUALITY SYMBOLS

DESCRIPTION

DATE: 2005/12/27

DRWN: JFZHENG

CHKD: 2005/12/30

APP: DOLUO 2006/01/16

REV

FIG NO: DG2006-0144

FIG NO: 887800076E

FIG NO: 887800019

FIG NO: 887800150

SCALE: ---

DESIGN UNITS: METRIC

THIRD ANGLE PROJECTION

TITLE: 30# HDMI TO DVI CABLE ASSY

DATE: 2005/12/27

DATE: 2005/12/27

DATE: 2005/12/27

DATE: 2006/01/16

DATE: 2005/12/27

SCALE: ---

DESIGN UNITS: METRIC

THIRD ANGLE PROJECTION

TITLE: 30# HDMI TO DVI CABLE ASSY

DATE: 2005/12/27

DATE: 2005/12/27

DATE: 2005/12/27

DATE: 2006/01/16

DATE: 2005/12/27

SCALE: ---

DESIGN UNITS: METRIC

THIRD ANGLE PROJECTION

TITLE: 30# HDMI TO DVI CABLE ASSY

DATE: 2005/12/27

DATE: 2005/12/27

DATE: 2005/12/27

DATE: 2006/01/16

DATE: 2005/12/27

SCALE: ---

DESIGN UNITS: METRIC

THIRD ANGLE PROJECTION

TITLE: 30# HDMI TO DVI CABLE ASSY

DATE: 2005/12/27

DATE: 2005/12/27

DATE: 2005/12/27

DATE: 2006/01/16

DATE: 2005/12/27

SCALE: ---

DESIGN UNITS: METRIC

THIRD ANGLE PROJECTION

TITLE: 30# HDMI TO DVI CABLE ASSY

DATE: 2005/12/27

DATE: 2005/12/27

DATE: 2005/12/27

DATE: 2006/01/16

DATE: 2005/12/27

SCALE: ---

DESIGN UNITS: METRIC

THIRD ANGLE PROJECTION

TITLE: 30# HDMI TO DVI CABLE ASSY

DATE: 2005/12/27

DATE: 2005/12/27

DATE: 2005/12/27

DATE: 2006/01/16

DATE: 2005/12/27

SCALE: ---

DESIGN UNITS: METRIC

THIRD ANGLE PROJECTION

TITLE: 30# HDMI TO DVI CABLE ASSY

DATE: 2005/12/27

DATE: 2005/12/27

DATE: 2005/12/27

DATE: 2006/01/16

DATE: 2005/12/27

SCALE: ---

DESIGN UNITS: METRIC

THIRD ANGLE PROJECTION

TITLE: 30# HDMI TO DVI CABLE ASSY

DATE: 2005/12/27

DATE: 2005/12/27

DATE: 2005/12/27

DATE: 2006/01/16

DATE: 2005/12/27

SCALE: ---

DESIGN UNITS: METRIC

THIRD ANGLE PROJECTION

TITLE: 30# HDMI TO DVI CABLE ASSY

DATE: 2005/12/27

DATE: 2005/12/27

DATE: 2005/12/27

DATE: 2006/01/16

DATE: 2005/12/27

SCALE: ---

DESIGN UNITS: METRIC

THIRD ANGLE PROJECTION

TITLE: 30# HDMI TO DVI CABLE ASSY

DATE: 2005/12/27

DATE: 2005/12/27

DATE: 2005/12/27

DATE: 2006/01/16

DATE: 2005/12/27

SCALE: ---

DESIGN UNITS: METRIC

THIRD ANGLE PROJECTION

TITLE: 30# HDMI TO DVI CABLE ASSY

DATE: 2005/12/27

DATE: 2005/12/27

DATE: 2005/12/27

DATE: 2006/01/16

DATE: 2005/12/27

SCALE: ---

DESIGN UNITS: METRIC

THIRD ANGLE PROJECTION

TITLE: 30# HDMI TO DVI CABLE ASSY

DATE: 2005/12/27

DATE: 2005/12/27

DATE: 2005/12/27

DATE: 2006/01/16

DATE: 2005/12/27

SCALE: ---

DESIGN UNITS: METRIC

THIRD ANGLE PROJECTION

TITLE: 30# HDMI TO DVI CABLE ASSY

DATE: 2005/12/27

DATE: 2005/12/27

DATE: 2005/12/27

DATE: 2006/01/16

DATE: 2005/12/27

SCALE: ---

DESIGN UNITS: METRIC

THIRD ANGLE PROJECTION

TITLE: 30# HDMI TO DVI CABLE ASSY

DATE: 2005/12/27

DATE: 2005/12/27

DATE: 2005/12/27

DATE: 2006/01/16

DATE: 2005/12/27

SCALE: ---

DESIGN UNITS: METRIC

THIRD ANGLE PROJECTION

TITLE: 30# HDMI TO DVI CABLE ASSY

DATE: 2005/12/27

DATE: 2005/12/27

DATE: 2005/12/27

DATE: 2006/01/16

DATE: 2005/12/27

SCALE: ---

DESIGN UNITS: METRIC

THIRD ANGLE PROJECTION

TITLE: 30# HDMI TO DVI CABLE ASSY

DATE: 2005/12/27

DATE: 2005/12/27

DATE: 2005/12/27

DATE: 2006/01/16

DATE: 2005/12/27

SCALE: ---

DESIGN UNITS: METRIC

THIRD ANGLE PROJECTION

TITLE: 30# HDMI TO DVI CABLE ASSY

DATE: 2005/12/27

DATE: 2005/12/27

DATE: 2005/12/27

DATE: 2006/01/16

DATE: 2005/12/27

SCALE: ---

DESIGN UNITS: METRIC

THIRD ANGLE PROJECTION

TITLE: 30# HDMI TO DVI CABLE ASSY

DATE: 2005/12/27

DATE: 2005/12/27

DATE: 2005/12/27

DATE: 2006/01/16

DATE: 2005/12/27

SCALE: ---

DESIGN UNITS: METRIC

THIRD ANGLE PROJECTION

TITLE: 30# HDMI TO DVI CABLE ASSY

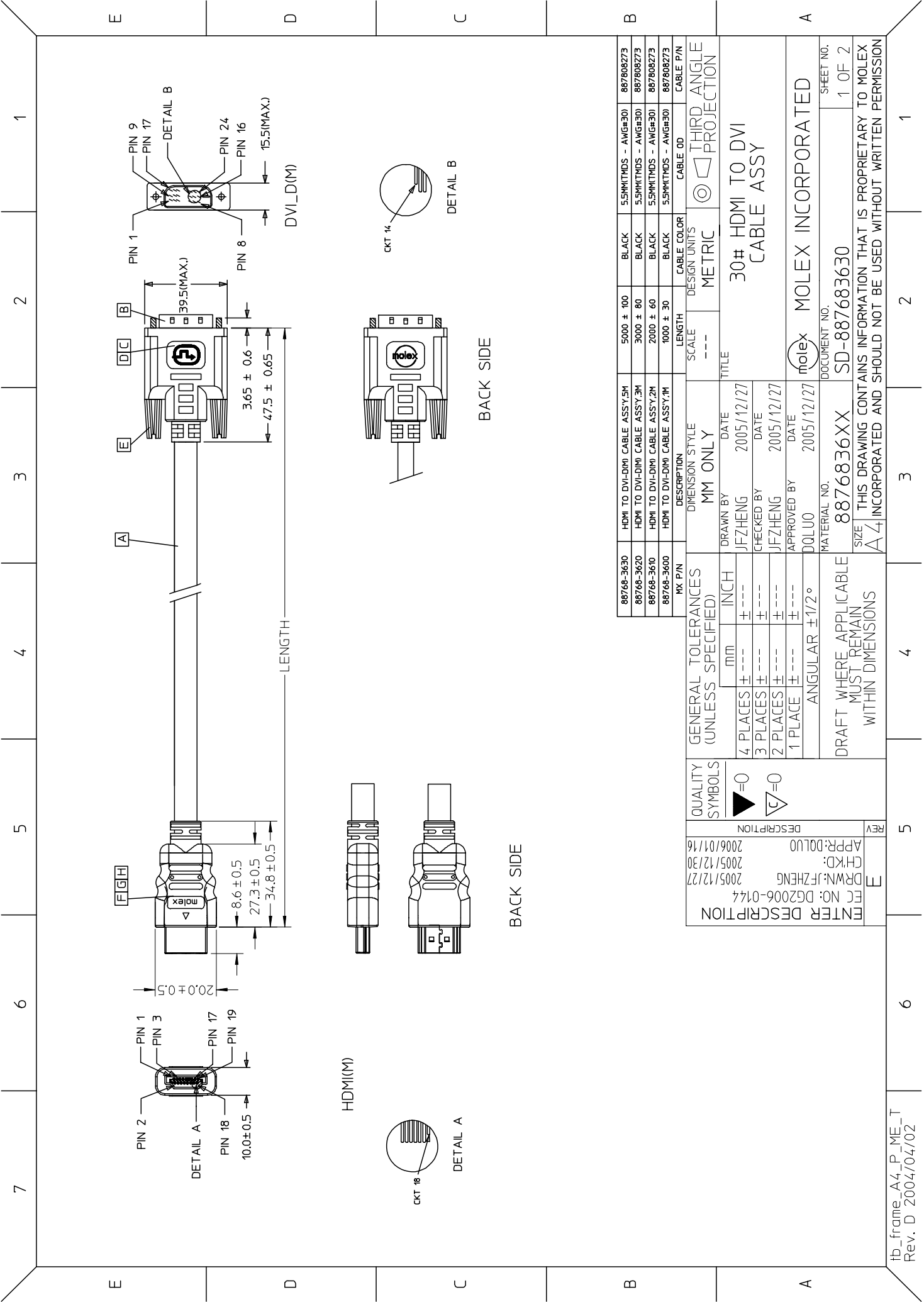
DATE: 2005/12/27

DATE: 2005/12/27

DATE: 2005/12/27

DATE: 2006/01/16

DATE: 2005/12/27



88768-3630	HDMI TO DVI-DIM CABLE ASSY,5M	5000 ± 100	BLACK	5.5MMTMS - ANG#30	887808273
88768-3620	HDMI TO DVI-DIM CABLE ASSY,3M	3000 ± 80	BLACK	5.5MMTMS - ANG#30	887808273
88768-3610	HDMI TO DVI-DIM CABLE ASSY,2M	2000 ± 60	BLACK	5.5MMTMS - ANG#30	887808273
88768-3600	HDMI TO DVI-DIM CABLE ASSY,1M	1000 ± 30	BLACK	5.5MMTMS - ANG#30	887808273
MX P/N	DESCRIPTION	LENGTH	CABLE COLOR	CABLE OD	CABLE P/N

QUALITY SYMBOLS	GENERAL TOLERANCES (UNLESS SPECIFIED)	DIMENSION STYLE	SCALE	DESIGN UNITS	THIRD ANGLE PROJECTION
4 PLACES ± ---	mm	MM ONLY	---	METRIC	
3 PLACES ± ---	INCH	DRAWN BY	DATE	TITLE	30# HDMI TO DVI CABLE ASSY
2 PLACES ± ---	± ---	JFZHENG	2005/12/27		
1 PLACE ± ---	± ---	CHECKED BY	DATE		
ANGULAR ± 1/2°	± ---	JFZHENG	2005/12/27		
		APPROVED BY	DATE		
		DQLUO	2005/12/27		
		MATERIAL NO.	DOCUMENT NO.		
		8876836XX	SD-887683630		
					SHEET NO. 1 OF 2

DRAFT WHERE APPLICABLE MUST REMAIN WITHIN DIMENSIONS

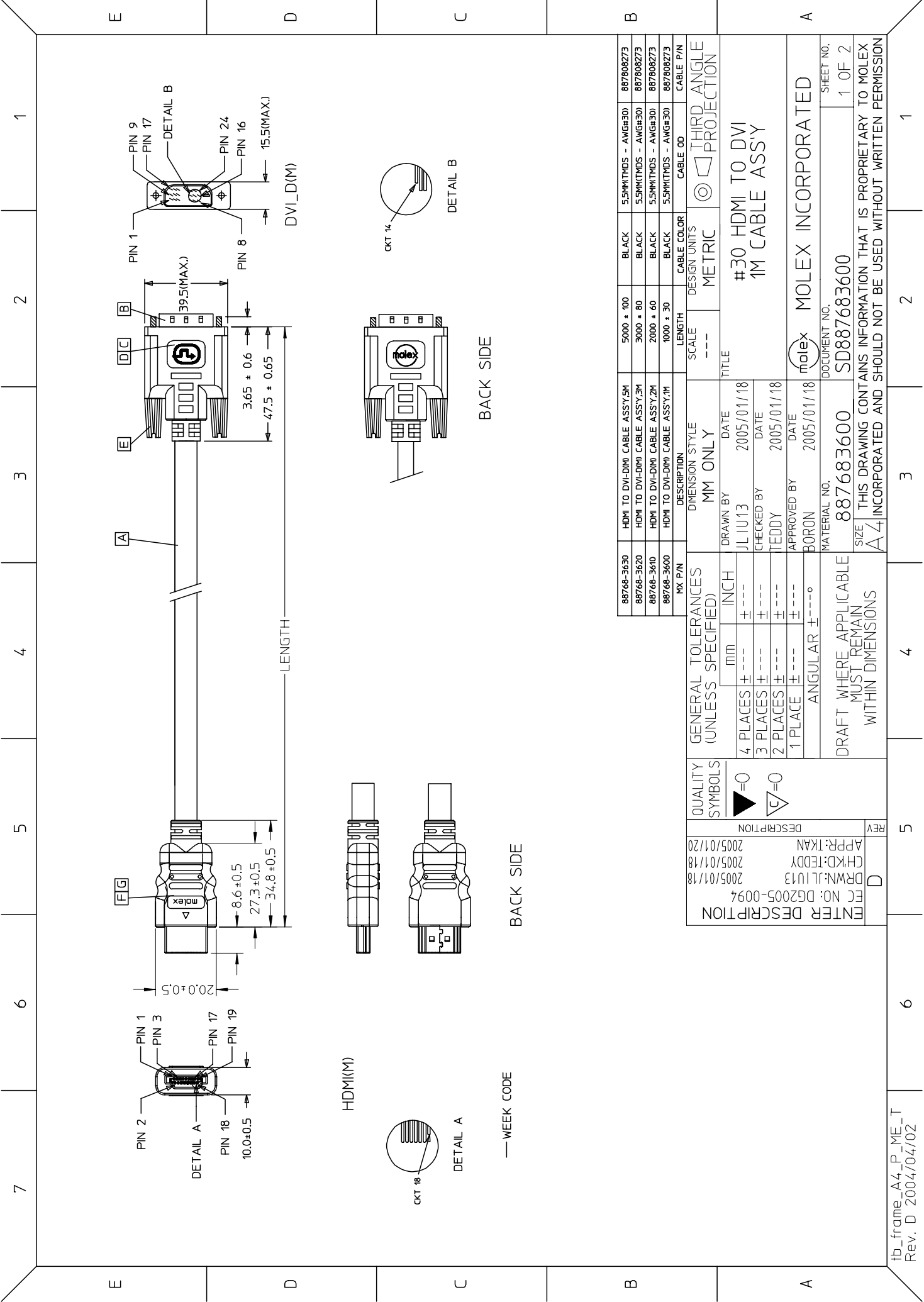
SIZE THIS DRAWING CONTAINS INFORMATION THAT IS PROPRIETARY TO MOLEX INCORPORATED AND SHOULD NOT BE USED WITHOUT WRITTEN PERMISSION

7	6	5	4	3	2	1																																																																																																														
E	<p>OTE:</p> <p>1. OVERMOLD SPECIFICATION: 1.1 DVI BOOT MOLDED SNOW WHITE PVC RESIN 887800076E~UL94V-0. 1.2 HDMI INNERMOLD WITH BK PVC 887800019. HDMI OVERMOLD WITH PVC 887800150.</p> <p>2. MECHANICAL SPECIFICATION: 2.1 CABLE SHOULD STAND THE PULL FORCE 89-111N FOR 30 SECONDS WITH NO VISIBLE TERMINATION DAMAGE. 2.2 CABLE SHOULD PASS THE FLEX TEST IN 100 CYCLES AT EACH OF PLANES, PER EIA 364-41, CONDITION 1.</p>																																																																																																																			
D	<p>3. PRODUCT ELECTRICAL SPECIFICATION</p> <p>3.1 DIELECTRIC STRENGTH</p> <p>3.2 INSULATION RESISTANCE.</p> <p>3.3 CONDUCTIVE RESISTANCE</p> <p>3.4 TMDS Signals Time Domain Impedence</p> <p>3.5 TMDS Signals Time Domain Crosstalk:FEXT</p> <p>3.6 TMDS Signals Skew</p> <p>3.7 Attenuation</p> <p>REFER TO ES-002 ELECTRICAL SPECIFICATION FOR DETAILS.</p>																																																																																																																			
C	<p>4.CABLE CONSTRUCTION</p> <p>(AWG#30*1P+D)*4 + AWG#30*1P + AWG#28*3C, 5.5MMOD'</p> <p>5. DVI CONNECTOR SPECIFICATION</p> <p>5.1 REFER TO PRODUCT SPEC. PS74320-001</p> <p>5.2 CONTACT PLATING</p> <p>6. THIS PRODUCT MUST MEET ROHS COMPLIANCE.</p>																																																																																																																			
B	<table border="1"> <thead> <tr> <th>ITEM</th> <th>DESCRIPTION</th> <th>SCALE</th> <th>DESIGN UNITS</th> <th>THIRD ANGLE PROJECTION</th> <th>QTY.</th> </tr> </thead> <tbody> <tr> <td>H</td> <td>SMALL METAL PLATED 47152-6009</td> <td>---</td> <td>METRIC</td> <td></td> <td>1</td> </tr> <tr> <td>G</td> <td>HDMI METAL CAN 47152-4001</td> <td></td> <td></td> <td></td> <td>1</td> </tr> <tr> <td>F</td> <td>HDMI HOUSING ASSY' 47152-1100</td> <td></td> <td></td> <td></td> <td>1</td> </tr> <tr> <td>E</td> <td>DVI THUMB SCREW 887806077</td> <td></td> <td></td> <td></td> <td>2</td> </tr> <tr> <td>D</td> <td>PCB 887899569/887899570</td> <td></td> <td></td> <td></td> <td>1</td> </tr> <tr> <td>C</td> <td>ONE BODY CAN 887899396</td> <td></td> <td></td> <td></td> <td>1</td> </tr> <tr> <td>B</td> <td>DVI_D SINGLE CHANNEL G/F CONNECTOR 743230001</td> <td></td> <td></td> <td></td> <td>1</td> </tr> <tr> <td>A</td> <td>DVI SINGLE LINK CABLE (SEE TABLE)</td> <td></td> <td></td> <td></td> <td>1</td> </tr> </tbody> </table>						ITEM	DESCRIPTION	SCALE	DESIGN UNITS	THIRD ANGLE PROJECTION	QTY.	H	SMALL METAL PLATED 47152-6009	---	METRIC		1	G	HDMI METAL CAN 47152-4001				1	F	HDMI HOUSING ASSY' 47152-1100				1	E	DVI THUMB SCREW 887806077				2	D	PCB 887899569/887899570				1	C	ONE BODY CAN 887899396				1	B	DVI_D SINGLE CHANNEL G/F CONNECTOR 743230001				1	A	DVI SINGLE LINK CABLE (SEE TABLE)				1																																																								
ITEM	DESCRIPTION	SCALE	DESIGN UNITS	THIRD ANGLE PROJECTION	QTY.																																																																																																															
H	SMALL METAL PLATED 47152-6009	---	METRIC		1																																																																																																															
G	HDMI METAL CAN 47152-4001				1																																																																																																															
F	HDMI HOUSING ASSY' 47152-1100				1																																																																																																															
E	DVI THUMB SCREW 887806077				2																																																																																																															
D	PCB 887899569/887899570				1																																																																																																															
C	ONE BODY CAN 887899396				1																																																																																																															
B	DVI_D SINGLE CHANNEL G/F CONNECTOR 743230001				1																																																																																																															
A	DVI SINGLE LINK CABLE (SEE TABLE)				1																																																																																																															
A	<table border="1"> <thead> <tr> <th colspan="2">GENERAL TOLERANCES (UNLESS SPECIFIED)</th> <th colspan="2">DIMENSION STYLE</th> <th colspan="2">SCALE</th> <th colspan="2">DESIGN UNITS</th> <th colspan="2">THIRD ANGLE PROJECTION</th> </tr> <tr> <th>mm</th> <th>INCH</th> <th>MM ONLY</th> <th>DATE</th> <th>---</th> <th>METRIC</th> <th>---</th> <th>METRIC</th> <th></th> <th>PROJECTION</th> </tr> </thead> <tbody> <tr> <td>4 PLACES ±</td> <td>---</td> <td>DRAWN BY</td> <td>DATE</td> <td>TITLE</td> <td colspan="5">30# HDMI TO DVI CABLE ASSY</td> </tr> <tr> <td>3 PLACES ±</td> <td>---</td> <td>JFZHENG</td> <td>2005/12/27</td> <td></td> <td colspan="5"></td> </tr> <tr> <td>2 PLACES ±</td> <td>---</td> <td>CHECKED BY</td> <td>DATE</td> <td></td> <td colspan="5"></td> </tr> <tr> <td>1 PLACE ±</td> <td>---</td> <td>JFZHENG</td> <td>2005/12/27</td> <td></td> <td colspan="5"></td> </tr> <tr> <td>ANGULAR ±1/2°</td> <td></td> <td>APPROVED BY</td> <td>DATE</td> <td></td> <td colspan="5"></td> </tr> <tr> <td></td> <td></td> <td>DQLUO</td> <td>2005/12/27</td> <td></td> <td colspan="5"></td> </tr> <tr> <td colspan="2">DRAFT WHERE APPLICABLE MUST REMAIN WITHIN DIMENSIONS</td> <td colspan="2">MATERIAL NO.</td> <td colspan="2">DOCUMENT NO.</td> <td colspan="2">SHEET NO.</td> <td colspan="2"></td> </tr> <tr> <td colspan="2"></td> <td colspan="2">887683600</td> <td colspan="2">SD-887683630</td> <td colspan="2">2 OF 2</td> <td colspan="2"></td> </tr> <tr> <td colspan="10">SIZE THIS DRAWING CONTAINS INFORMATION THAT IS PROPRIETARY TO MOLEX INCORPORATED AND SHOULD NOT BE USED WITHOUT WRITTEN PERMISSION</td> </tr> </tbody> </table>						GENERAL TOLERANCES (UNLESS SPECIFIED)		DIMENSION STYLE		SCALE		DESIGN UNITS		THIRD ANGLE PROJECTION		mm	INCH	MM ONLY	DATE	---	METRIC	---	METRIC		PROJECTION	4 PLACES ±	---	DRAWN BY	DATE	TITLE	30# HDMI TO DVI CABLE ASSY					3 PLACES ±	---	JFZHENG	2005/12/27							2 PLACES ±	---	CHECKED BY	DATE							1 PLACE ±	---	JFZHENG	2005/12/27							ANGULAR ±1/2°		APPROVED BY	DATE									DQLUO	2005/12/27							DRAFT WHERE APPLICABLE MUST REMAIN WITHIN DIMENSIONS		MATERIAL NO.		DOCUMENT NO.		SHEET NO.						887683600		SD-887683630		2 OF 2				SIZE THIS DRAWING CONTAINS INFORMATION THAT IS PROPRIETARY TO MOLEX INCORPORATED AND SHOULD NOT BE USED WITHOUT WRITTEN PERMISSION									
GENERAL TOLERANCES (UNLESS SPECIFIED)		DIMENSION STYLE		SCALE		DESIGN UNITS		THIRD ANGLE PROJECTION																																																																																																												
mm	INCH	MM ONLY	DATE	---	METRIC	---	METRIC		PROJECTION																																																																																																											
4 PLACES ±	---	DRAWN BY	DATE	TITLE	30# HDMI TO DVI CABLE ASSY																																																																																																															
3 PLACES ±	---	JFZHENG	2005/12/27																																																																																																																	
2 PLACES ±	---	CHECKED BY	DATE																																																																																																																	
1 PLACE ±	---	JFZHENG	2005/12/27																																																																																																																	
ANGULAR ±1/2°		APPROVED BY	DATE																																																																																																																	
		DQLUO	2005/12/27																																																																																																																	
DRAFT WHERE APPLICABLE MUST REMAIN WITHIN DIMENSIONS		MATERIAL NO.		DOCUMENT NO.		SHEET NO.																																																																																																														
		887683600		SD-887683630		2 OF 2																																																																																																														
SIZE THIS DRAWING CONTAINS INFORMATION THAT IS PROPRIETARY TO MOLEX INCORPORATED AND SHOULD NOT BE USED WITHOUT WRITTEN PERMISSION																																																																																																																				

SHIELD	SHIELD	OVERALL SHIELD	GROUND
PIN 19	PIN 16	WHITE	HOT PLUG DETECT
PIN 18	PIN 14	YELLOW	POWER +5V
PIN 17	PIN 15	ORANGE	GROUND(+5V&DDC)
PIN 16	PIN 7	RED	DDC DATA(SDA)
PIN 15	PIN 6	VIOLET	DDC CLOCK(SCL)
PIN 12	PIN 24	WHITE	TMDS CLOCK-
PIN 11	PIN 22	BRAID	TMDS CLOCK SHIELD
PIN 10	PIN 23	BROWN	TMDS CLOCK+
PIN 9	PIN 17	WHITE	TMDS DATA 0-
PIN 8	PIN 19	BRAID	TMDS DATA 0 SHIELD
PIN 7	PIN 18	BLUE	TMDS DATA 0+
PIN 6	PIN 9	WHITE	TMDS DATA 1-
PIN 5	PIN 11	BRAID	TMDS DATA 1 SHIELD
PIN 4	PIN 10	GREEN	TMDS DATA 1+
PIN 3	PIN 1	WHITE	TMDS DATA 2-
PIN 2	PIN 3	BRAID	TMDS DATA 2 SHIELD
PIN 1	PIN 2	RED	TMDS DATA 2+
HDMI	DVI-D	COLOR	CABLE FUNCTION

QUALITY SYMBOLS	GENERAL TOLERANCES (UNLESS SPECIFIED)	DIMENSION STYLE	SCALE	DESIGN UNITS	THIRD ANGLE PROJECTION	QTY.
	4 PLACES ±	DRAWN BY	DATE	TITLE	30# HDMI TO DVI CABLE ASSY	
	3 PLACES ±	JFZHENG	2005/12/27			
	2 PLACES ±	CHECKED BY	DATE			
	1 PLACE ±	JFZHENG	2005/12/27			
	ANGULAR ±1/2°	APPROVED BY	DATE			
		DQLUO	2005/12/27			

DESCRIPTION	REV
DESCRIPTION	REV
APP: DQLUO	
CHKD: 2005/12/30	
DRWN: JFZHENG	
FIG NO: DG2006-0144	
FIG NO: 2005/12/27	



88768-3630	HDMI TO DVI-D(M) CABLE ASSY,5M	5000 * 100	BLACK	5.5MM(TMS) - AWG#30	8876808273
88768-3620	HDMI TO DVI-D(M) CABLE ASSY,3M	3000 * 80	BLACK	5.5MM(TMS) - AWG#30	8876808273
88768-3610	HDMI TO DVI-D(M) CABLE ASSY,2M	2000 * 60	BLACK	5.5MM(TMS) - AWG#30	8876808273
88768-3600	HDMI TO DVI-D(M) CABLE ASSY,1M	1000 * 30	BLACK	5.5MM(TMS) - AWG#30	8876808273

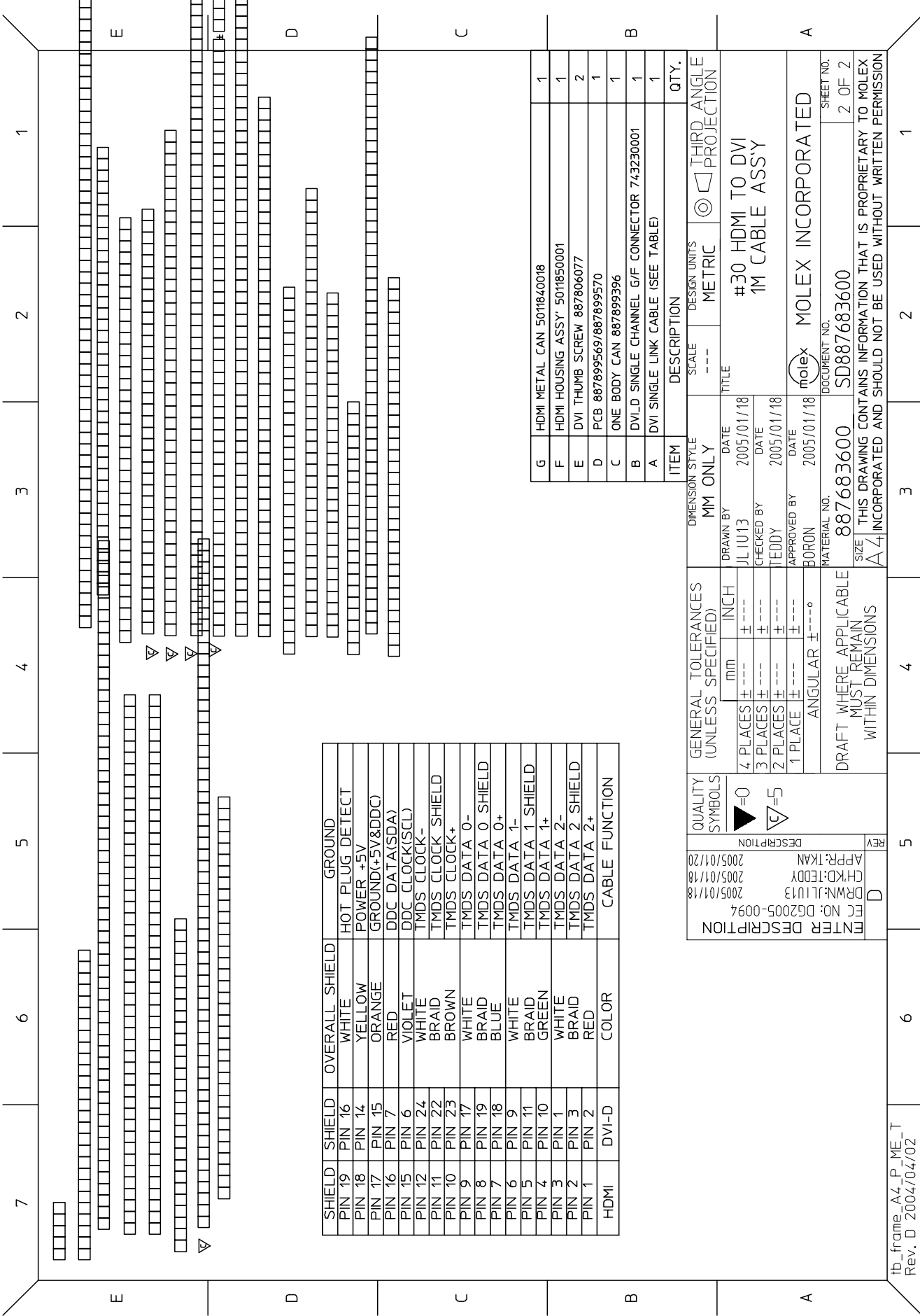
GENERAL TOLERANCES (UNLESS SPECIFIED)	MM ONLY	SCALE	DESIGN UNITS	THIRD ANGLE PROJECTION
4 PLACES ± 0.15	INCH	---	METRIC	
3 PLACES ± 0.25				
2 PLACES ± 0.38				
1 PLACE ± 0.51				
ANGULAR ± 0.5°				
DRAFT WHERE APPLICABLE MUST REMAIN WITHIN DIMENSIONS		TITLE		
DRAWN BY: JLIU13		DATE: 2005/01/18		
CHECKED BY: TEDDY		DATE: 2005/01/18		
APPROVED BY: BORON		DATE: 2005/01/18		
MATERIAL NO. 887683600		DOCUMENT NO. SD887683600		
SIZE A4		SHEET NO. 1 OF 2		

#30 HDMI TO DVI
1M CABLE ASSY

MOLEX INCORPORATED

THIS DRAWING CONTAINS INFORMATION THAT IS PROPRIETARY TO MOLEX INCORPORATED AND SHOULD NOT BE USED WITHOUT WRITTEN PERMISSION

ENTER DESCRIPTION	REV
DESCRIPTION	
2005/01/20	
APPR:TKAN	
CHKD:TEDDY	
2005/01/18	
DRWN:JLIU13	
2005/01/18	
FCC NO: DG2005-0094	



SHIELD	SHIELD	OVERALL SHIELD	GROUND
PIN 19	PIN 16	WHITE	HOT PLUG DETECT
PIN 18	PIN 14	YELLOW	POWER +5V
PIN 17	PIN 15	ORANGE	GROUND(+5V&DDC)
PIN 16	PIN 7	RED	DDC DATA(SDA)
PIN 15	PIN 6	VIOLET	DDC CLOCK(SCL)
PIN 12	PIN 24	WHITE	TMDS CLOCK-
PIN 11	PIN 22	BRAD	TMDS CLOCK SHIELD
PIN 10	PIN 23	BROWN	TMDS CLOCK+
PIN 9	PIN 17	WHITE	TMDS DATA 0-
PIN 8	PIN 19	BRAD	TMDS DATA 0 SHIELD
PIN 7	PIN 18	BLUE	TMDS DATA 0+
PIN 6	PIN 9	WHITE	TMDS DATA 1-
PIN 5	PIN 11	BRAD	TMDS DATA 1 SHIELD
PIN 4	PIN 10	GREEN	TMDS DATA 1+
PIN 3	PIN 1	WHITE	TMDS DATA 2-
PIN 2	PIN 3	BRAD	TMDS DATA 2 SHIELD
PIN 1	PIN 2	RED	TMDS DATA 2+
HDMI	DVI-D	COLOR	CABLE FUNCTION

ITEM	DESCRIPTION	SCALE	DESIGN UNITS	THIRD ANGLE PROJECTION	QTY.
G	HDMI METAL CAN 501840018	---	METRIC		1
F	HDMI HOUSING ASSY: 501850001	---	METRIC		1
E	DVI THUMB SCREW 887806077	---	METRIC		2
D	PCB 887899569/887899570	---	METRIC		1
C	ONE BODY CAN 887899396	---	METRIC		1
B	DVI-D SINGLE CHANNEL G/F CONNECTOR 743230001	---	METRIC		1
A	DVI SINGLE LINK CABLE (SEE TABLE)	---	METRIC		1

QUALITY SYMBOLS	GENERAL TOLERANCES (UNLESS SPECIFIED)	DIMENSION STYLE	SCALE	DESIGN UNITS	THIRD ANGLE PROJECTION	QTY.
	4 PLACES ± ---	MM ONLY	---	METRIC		1
	3 PLACES ± ---	DRAWN BY DATE	TITLE			
	2 PLACES ± ---	JL IU13 2005/01/18	#30 HDMI TO DVI			
	1 PLACE ± ---	CHECKED BY DATE	1M CABLE ASSY			
	ANGULAR ± ---°	TEDDY 2005/01/18				
		APPROVED BY DATE				
		BORON 2005/01/18				
		MATERIAL NO.	DOCUMENT NO.			
		887683600	SD887683600			
		SIZE	SHEET NO.			
		A4	2 OF 2			
			THIS DRAWING CONTAINS INFORMATION THAT IS PROPRIETARY TO MOLEX INCORPORATED AND SHOULD NOT BE USED WITHOUT WRITTEN PERMISSION			

ENTER DESCRIPTION
 APP:TKAN
 CH:KJ:TEDDY
 DRN:JL IU13
 FCC NO: DG2005-0094
 2005/01/18

tb_frame_A4_P_ME_T
 Rev. D 2004/04/02