

PLEASE CHECK WWW.MOLEX.COM FOR LATEST PART INFORMATION

Part Number: [0887683500](#)
Status: **Active**
Overview: high definition multimedia interface hdmi
Description: HDMI*-to-DVI-Digital Cable Assembly, 28 AWG, 1.0m (3.28') Length

Documents:

[Drawing \(PDF\)](#) [RoHS Certificate of Compliance \(PDF\)](#)
[Product Specification PS-88768-001 \(PDF\)](#)

General

Product Family	Cable Assemblies
Series	88768
Connector to Connector	HDMI*-to-DVI-Digital
MolexKits	Yes
Overview	<u>high definition multimedia interface hdmi</u>
Product Name	HDMI*

Physical

Cable Length	1.0m (3.28')
Circuits (Loaded)	19
Color - Resin	Black, Natural
Gender	Male-Male
Lock to Mating Part	Yes
Material - Metal	High Performance Alloy (HPA), Phosphor Bronze
Material - Plating Mating	Gold
Material - Plating Termination	Tin
Material - Resin	High Temperature Thermoplastic, Low Density Polyethylene, Polyester
Packaging Type	Bag
Pitch - Mating Interface (in)	0.039 In
Pitch - Mating Interface (mm)	1.00 mm
Plating min: Mating (µin)	10, 32
Plating min: Mating (µm)	0.25, 0.8
Plating min: Termination (µin)	150, 50.8
Plating min: Termination (µm)	1.27, 3.75
Single Ended	No
Termination Interface: Style	Solder or Weld, Through Hole
Wire Insulation Diameter	N/A
Wire Size AWG	28
Wire/Cable Type	Round

Electrical

Current - Maximum per Contact	0.5A
Impedance	100 ohms
Shielded	Yes
Voltage - Maximum	40V

Material Info

Reference - Drawing Numbers

Product Specification	PS-88768-001
Sales Drawing	SD-88768-3500, SD-887683500, SD-887683510, SD-887683520, SD-887683530, SD887683500

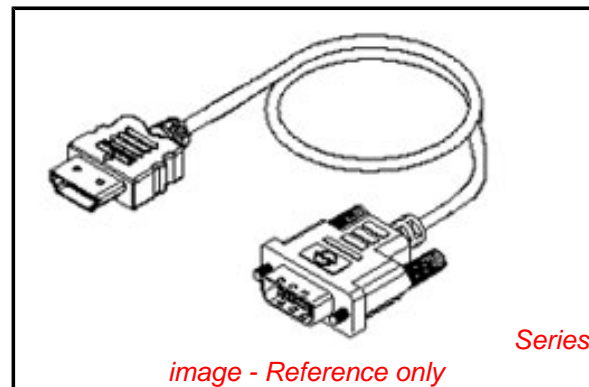


image - Reference only

EU RoHS

RoHS Compliant by Exemption
REACH SVHC Not Reviewed
Halogen-Free Status Not Reviewed

China RoHS



Need more information on product environmental compliance?

Email productcompliance@molex.com
 For a multiple part number RoHS Certificate of Compliance, [click here](#)

Please visit the [Contact Us](#) section for any non-product compliance questions.

Search Parts in this Series
 88768Series

*High Definition Multimedia Interface and HDMI are trademarks of HDMI Licensing, LLC.

This document was generated on 06/08/2010

PLEASE CHECK WWW.MOLEX.COM FOR LATEST PART INFORMATION

6

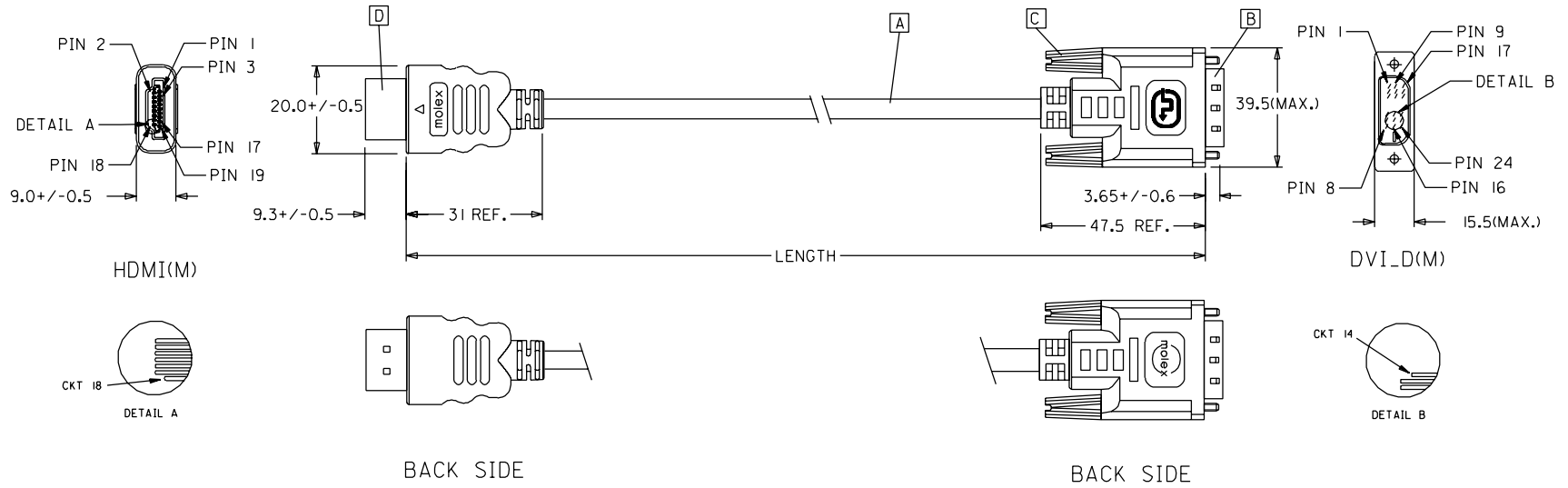
5

4

3

2

1



88768-3620	HDMI TO DVI-D(M) CABLE ASS'Y,3M	3000+/-80	BLACK	5,5MM(TMDS - AWG*30)
88768-3610	HDMI TO DVI-D(M) CABLE ASS'Y,2M	2000+/-60	BLACK	5,5MM(TMDS - AWG*30)
88768-3600	HDMI TO DVI-D(M) CABLE ASS'Y,1M	1000+/-30	BLACK	5,5MM(TMDS - AWG*30)
88768-3530	HDMI TO DVI-D(M) CABLE ASS'Y,5M	5000+/-100	BLACK	7,3MM(TMDS - AWG*28)
88768-3520	HDMI TO DVI-D(M) CABLE ASS'Y,3M	3000+/-80	BLACK	7,3MM(TMDS - AWG*28)
88768-3510	HDMI TO DVI-D(M) CABLE ASS'Y,2M	2000+/-60	BLACK	7,3MM(TMDS - AWG*28)
88768-3500	HDMI TO DVI-D(M) CABLE ASS'Y,1M	1000+/-30	BLACK	7,3MM(TMDS - AWG*28)
MX P/N	DESCRIPTION	LENGTH	CABLE COLOR	CABLE OD

EC NO. DRWN: CHK: APPR:	DESCRIPTION	QUALITY SYMBOLS	GENERAL TOLERANCES: (UNLESS SPECIFIED)		SCALE N.S.T	DESIGN UNITS <input checked="" type="checkbox"/> mm <input type="checkbox"/> INCH	THIRD ANGLE PROJECTION	<input type="checkbox"/> mm INCH	<input type="checkbox"/> mm INCH	<input checked="" type="checkbox"/> mm ONLY	SHT	REV
		MAJOR ▼ = 0 CRITICAL ▽ = 0	4 PLACES ±0. ±.	3 PLACES ±0. ±.	2 PLACES ±0. ±.	1 PLACE ±0. ±.	ANGULAR: ± °	DRAWN BY & DATE Louis Chen 03/11/17	TITLE: HDMI(M) TO DVI-D(M) CABLE ASS'Y			
C	REV					APPROVED BY & DATE Baron Chen 03/11/17	MOLEX INCORPORATED					
						CAD FILENAME S88768AA.SOI	MATERIAL NO. SEE TABLE	DRAWING NO. SD-88768-001	SHEET NO. 1 OF 2		SIZE A4	
THIS DRAWING CONTAINS INFORMATION THAT IS PROPRIETARY TO MOLEX INCORPORATED AND SHOULD NOT BE USED WITHOUT WRITTEN PERMISSION.												

6

5

4

3

2

1

NOTE: 1. OVERMOLD SPECIFICATION

1.1 DVI BOOT MOLDED WITH SNOW WHITE PVC RESIN P/N.

1.1.1 UL94V-0

1.1.2 HARDNESS (DUROMETER): SHORE A 90-95

1.2 HDMI OUTER MOLD WITH BLACK PVC RESIN. UL94V-0.

2. MECHANICAL SPECIFICATION

2.1 CABLE SHOULD STAND THE PULL FORCE 89-11IN FOR 30 SECONDS WITH NO VISIBLE TERMINATION DAMAGE.

2.2 CABLE SHOULD PASS THE FLEX TEST IN 100 CYCLES AT EACH OF PLANES, PER EIA 364-41, CONDITION 1.

3. CABLE ELECTRICAL SPECIFICATION

3.1 DIELECTRIC STRENGTH: 300V AC FOR 10MS.

3.2 INSULATION RESISTANCE: 10 MEGA Ohms MIN.

3.3 DIFFERENTIAL LINES CHARACTERISTIC IMPEDANCE: 100+/-10 Ohms @TDR.

3.4 CONTACT RESISTANCE: 2 OHMS(MAX.).

3.5 SIGNALS CROSSTALK(FEXT): 5% (MAX.) PER ANSI/EIA-364-90.


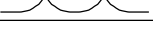






3.6 SIGNALS INTRA-PAIR SKEW : <150 ps.

4. DVI CONNECTOR SPECIFICATION


4.1 REFER TO PRODUCT SPEC. PS74320-0001.

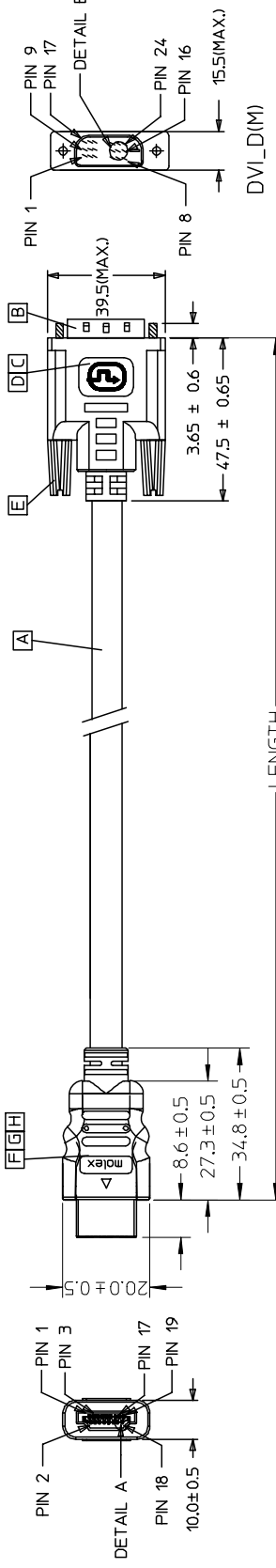
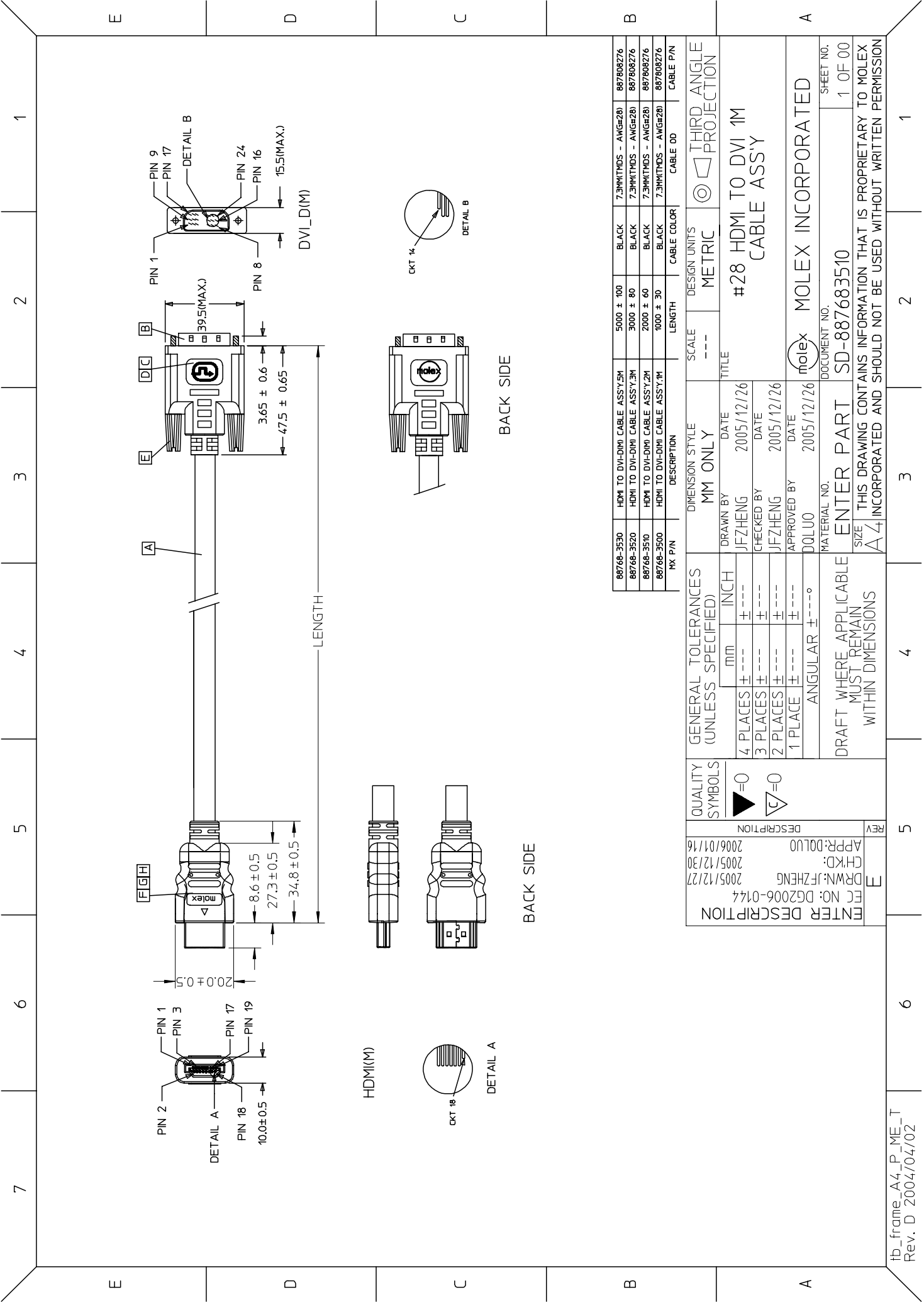
4.2 CONTACT PLATING: AU FLASH.

5. MATERIAL MUST MEET MANAGEMENT REGULATIONS FOR ENVIRONMENT (MX TS-0002).

SHIELD	SHIELD		GROUND
PIN 19	PIN 16	=====	HOT PLUG DETECT
PIN 18	PIN 14	=====	POWER +5V
PIN 17	PIN 15	=====	GROUND(+5V&DDC)
PIN 16	PIN 7	=====	DDC DATA(SDA)
PIN 15	PIN 6	=====	DDC CLOCK(SCL)
PIN 11	PIN 22	=====	TMDS CLOCK SHIELD
PIN 12	PIN 24		TMDS CLOCK-
PIN 10	PIN 23		TMDS CLOCK+
PIN 8	PIN 19	=====	TMDS DATA 0 SHIELD
PIN 9	PIN 17		TMDS DATA 0-
PIN 7	PIN 18		TMDS DATA 0+
PIN 5	PIN 11	=====	TMDS DATA 1 SHIELD
PIN 6	PIN 9		TMDS DATA 1-
PIN 4	PIN 10		TMDS DATA 1+
PIN 2	PIN 3	=====	TMDS DATA 2 SHIELD
PIN 3	PIN 1		TMDS DATA 2-
PIN 1	PIN 2		TMDS DATA 2+
HDMI	DVI-D	COLOR	CABLE FUNCTION

D	HDMI PLUG ASSY'	1
C	DVI THUMB SCREW	2
B	DVI_D SINGLE CHANNEL G/F CONNECTOR	1
A	DVI SINGLE LINK CABLE (SEE TABLE)	1
ITEM	DESCRIPTION	QTY.

EC NO. C	DRWN: CHK: APPR:	DESCRIPTION REV	QUALITY SYMBOLS MAJOR ▼ = 0 CRITICAL ▽ = 5	GENERAL TOLERANCES: (UNLESS SPECIFIED)		SCALE N.S.T	DESIGN UNITS <input checked="" type="checkbox"/> mm <input type="checkbox"/> INCH	THIRD ANGLE PROJECTION 	<input type="checkbox"/> mm INCH <input type="checkbox"/> mm INCH <input checked="" type="checkbox"/> mm ONLY	SHT	REV
				4 PLACES ±0.	±.	DRAWN BY & DATE Louis Chen 03/11/17	TITLE: HDMI(M) TO DVI-D(M) CABLE ASS'Y			REVISION CAD ONLY	
				3 PLACES ±0.	±.	CHECKED BY & DATE Teddy Kan 03/11/17	APPROVED BY & DATE Boron Chen 03/11/17			MOLEX INCORPORATED	
				2 PLACES ±0.	±.	CAD FILENAME S88768AA.S02		MATERIAL NO. SEE TABLE	DRAWING NO. SD-88768-001	SHEET NO. 2 OF 2	
				1 PLACE ±0.	±.	THIS DRAWING CONTAINS INFORMATION THAT IS PROPRIETARY TO MOLEX INCORPORATED AND SHOULD NOT BE USED WITHOUT WRITTEN PERMISSION.					SIZE A4
				ANGULAR: ±	°						



MOLEX P/N	DESCRIPTION	LENGTH	CABLE COLOR	CABLE P/N
88768-3530	HDMI TO DVI-D(M) CABLE ASSY.5M	5000 ± 100	BLACK	7.3MM(TMDS - AWGR28) 887808276
88768-3520	HDMI TO DVI-D(M) CABLE ASSY.3M	3000 ± 80	BLACK	7.3MM(TMDS - AWGR28) 887808276
88768-3510	HDMI TO DVI-D(M) CABLE ASSY.2M	2000 ± 60	BLACK	7.3MM(TMDS - AWGR28) 887808276
88768-3500	HDMI TO DVI-D(M) CABLE ASSY.1M	1000 ± 30	BLACK	7.3MM(TMDS - AWGR28) 887808276

GENERAL TOLERANCES (UNLESS SPECIFIED)	QUALITY SYMBOLS	DESIGN STYLE	SCALE	DESIGN UNITS
4 PLACES ± --- INCH	▶=0	MM ONLY	---	METRIC
3 PLACES ± ---	◻=0	DRAWN BY	DATE	THIRD ANGLE PROJECTION
2 PLACES ± ---		JFZHENG	2005/12/26	#28 HDMI TO DVI 1M CABLE ASSY
1 PLACE ± ---		CHECKED BY	DATE	
ANGULAR ± ---°		JFZHENG	2005/12/26	
		APPROVED BY	DATE	
		DQLUO	2005/12/26	
DRAFT WHERE APPLICABLE MUST REMAIN WITHIN DIMENSIONS		MATERIAL NO.	DOCUMENT NO.	SHEET NO.
		ENTER PART	SD-887683510	1 OF 00
		THIS DRAWING CONTAINS INFORMATION THAT IS PROPRIETARY TO MOLEX AND SHOULD NOT BE USED WITHOUT WRITTEN PERMISSION		

NOTE:

1. OVERMOLD SPECIFICATION:
 - 1.1 DVI BOOT MOLDED SNOW WHITE PVC RESIN 887800076,UL94V-0.
 - 1.2 HDMI INNERMOLD WITH BK PVC 887800019.
 - HDMI OVERMOLD WITH PVC 887800150
 - 1.3 HDMI DUST COVER WITH PE 887800008

2. MECHANICAL SPECIFICATION
 - 2.1 CABLE SHOULD STAND THE PULL FORCE 89-111N FOR 30 SECONDS WITH NO VISIBLE TERMINATION DAMAGE.
 - 2.2 CABLE SHOULD PASS THE FLEX TEST IN 100 CYCLES AT EACH OF PLANES, PER EIA 364-41, CONDITION 1.

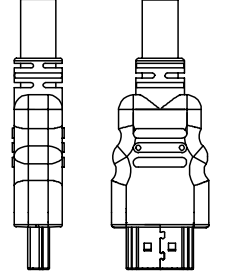
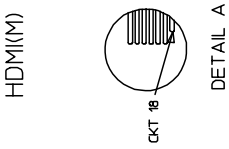
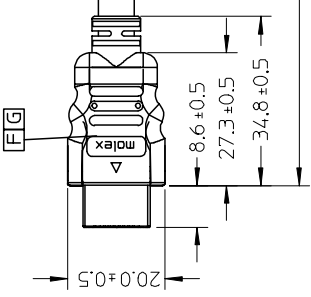
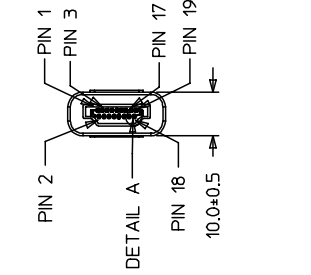
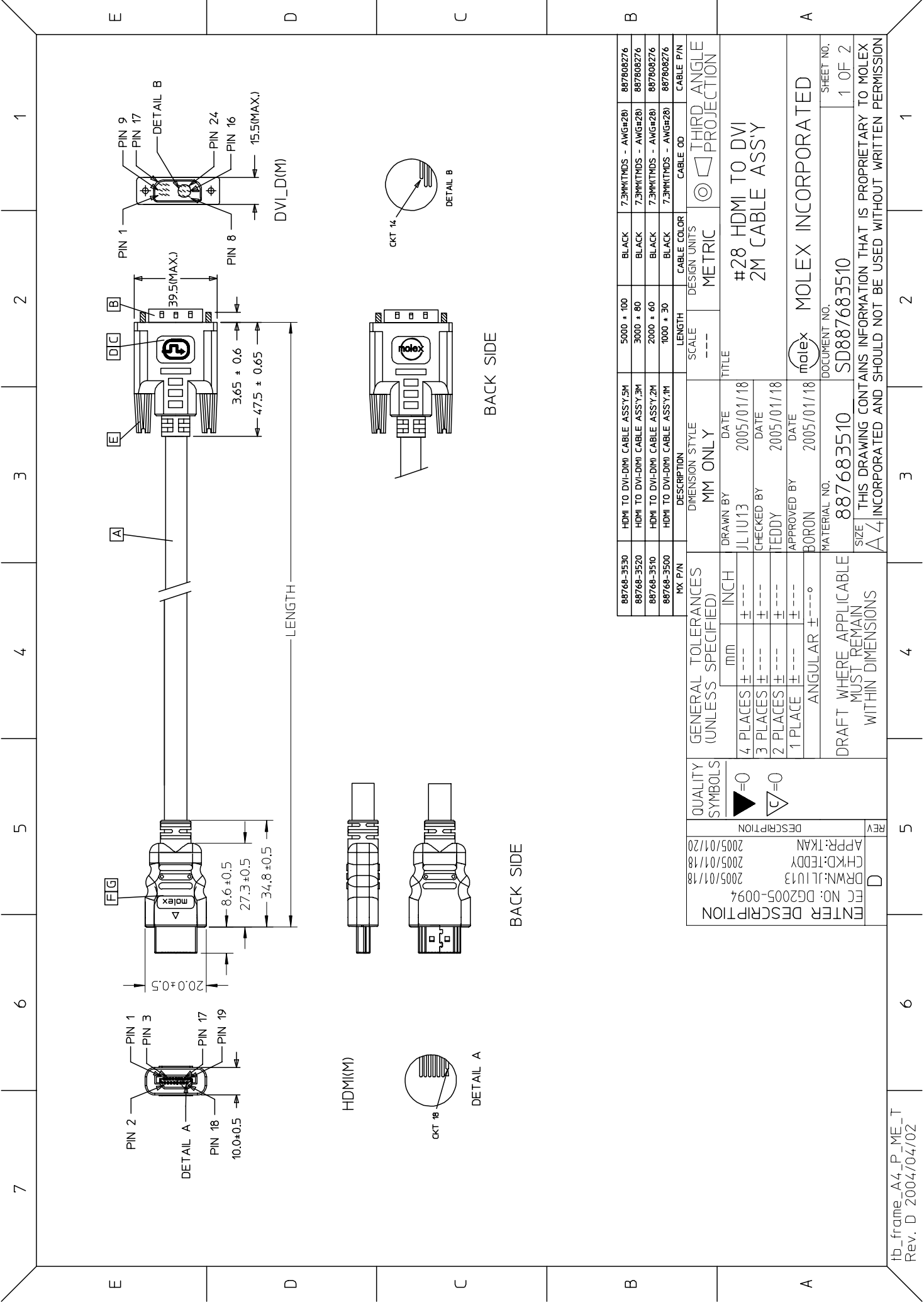
3. PRODUCT ELECTRICAL SPECIFICATION:
 - 3.1 DIELECTRIC STRENGTH.
 - 3.2 INSULATION RESISTANCE.
 - 3.3 CONDUCTIVE RESISTANCE.
 - 3.4 TMS Signals Time Domain Impedence
 - 3.5 TMS Signals Time Domain Crosstalk:FEXT
 - 3.6 TMS Signals Skew
 - 3.7 Attenuation

- REFER TO ES-002 ELECTRICAL SPECIFICATION FOR DETAILS.
- 4.CABLE CONSTRUCTION/CABLE (AWG#28*1P+D)*4 + AWG#28*1P + AWG#28*3C, 7.3MMOD
 5. DVI CONNECTOR SPECIFICATION(DVI)
 - 5.1 REFER TO PRODUCT SPEC. PS74320-001
 - 5.2 CONTACT PLATING: AU FLASH.
 6. THIS PRODUCT MUST MEET ROHS COMPLIANCE.

SHIELD	SHIELD	OVERALL SHIELD	GROUND
PIN 19	PIN 16	WHITE	HOT PLUG DETECT
PIN 18	PIN 14	YELLOW	POWER +5V
PIN 17	PIN 15	ORANGE	GROUND(+5V&DDC)
PIN 16	PIN 7	RED	DDC DATA(SDA)
PIN 15	PIN 6	VIOLET	DDC CLOCK(SCL)
PIN 12	PIN 24	WHITE	TMS CLOCK-
PIN 11	PIN 22	BRAID	TMS CLOCK SHIELD
PIN 10	PIN 23	BROWN	TMS CLOCK+
PIN 9	PIN 17	WHITE	TMS DATA 0-
PIN 8	PIN 19	BRAID	TMS DATA 0 SHIELD
PIN 7	PIN 18	BLUE	TMS DATA 0+
PIN 6	PIN 9	WHITE	TMS DATA 1-
PIN 5	PIN 11	BRAID	TMS DATA 1 SHIELD
PIN 4	PIN 10	GREEN	TMS DATA 1+
PIN 3	PIN 1	WHITE	TMS DATA 2-
PIN 2	PIN 3	BRAID	TMS DATA 2 SHIELD
PIN 1	PIN 2	RED	TMS DATA 2+
HDMI	DVI-D	COLOR	CABLE FUNCTION

ITEM	DESCRIPTION	SCALE	DESIGN UNITS	METRIC	THIRD ANGLE PROJECTION	QTY.
H	HDMI METAL PLATED	47152-6009				1
G	HDMI METAL CAN	47152-4001				1
F	HDMI HOUSING ASSY.	47152-1100				1
E	DVI THUMB SCREW	887806077				2
D	PCB	887899569/887899570				1
C	ONE BODY CAN	887899392				1
B	DVLD SINGLE CHANNEL G/F CONNECTOR	743230001				1
A	DVI SINGLE LINK CABLE (SEE TABLE)					1

QUALITY SYMBOLS	GENERAL TOLERANCES (UNLESS SPECIFIED)	DIMENSION STYLE	SCALE	DESIGN UNITS	METRIC	THIRD ANGLE PROJECTION
=0 =5	mm INCH 4 PLACES ± --- ± --- INCH 3 PLACES ± --- ± --- INCH 2 PLACES ± --- ± --- INCH 1 PLACE ± --- ± --- INCH ANGULAR ± --- °	MM ONLY	---	METRIC		
DESCRIPTION APPR: DDLUO 2006/01/16 CHKD: 2005/12/30 DRWN: JFZHENG 2005/12/27 FIC NO: DG2006-0144 FTR NO: 051227	DRAWN BY JFZHENG 2005/12/26 CHECKED BY JFZHENG 2005/12/26 APPROVED BY DDLUO 2005/12/26 MATERIAL NO.	DATE	---	METRIC		
DRAFT WHERE APPLICABLE MUST REMAIN WITHIN DIMENSIONS		TITLE #28 HDMI TO DVI 1M CABLE ASSY				
		MOLEX INCORPORATED		DOCUMENT NO. SD-887683510		SHEET NO. 2 OF 2

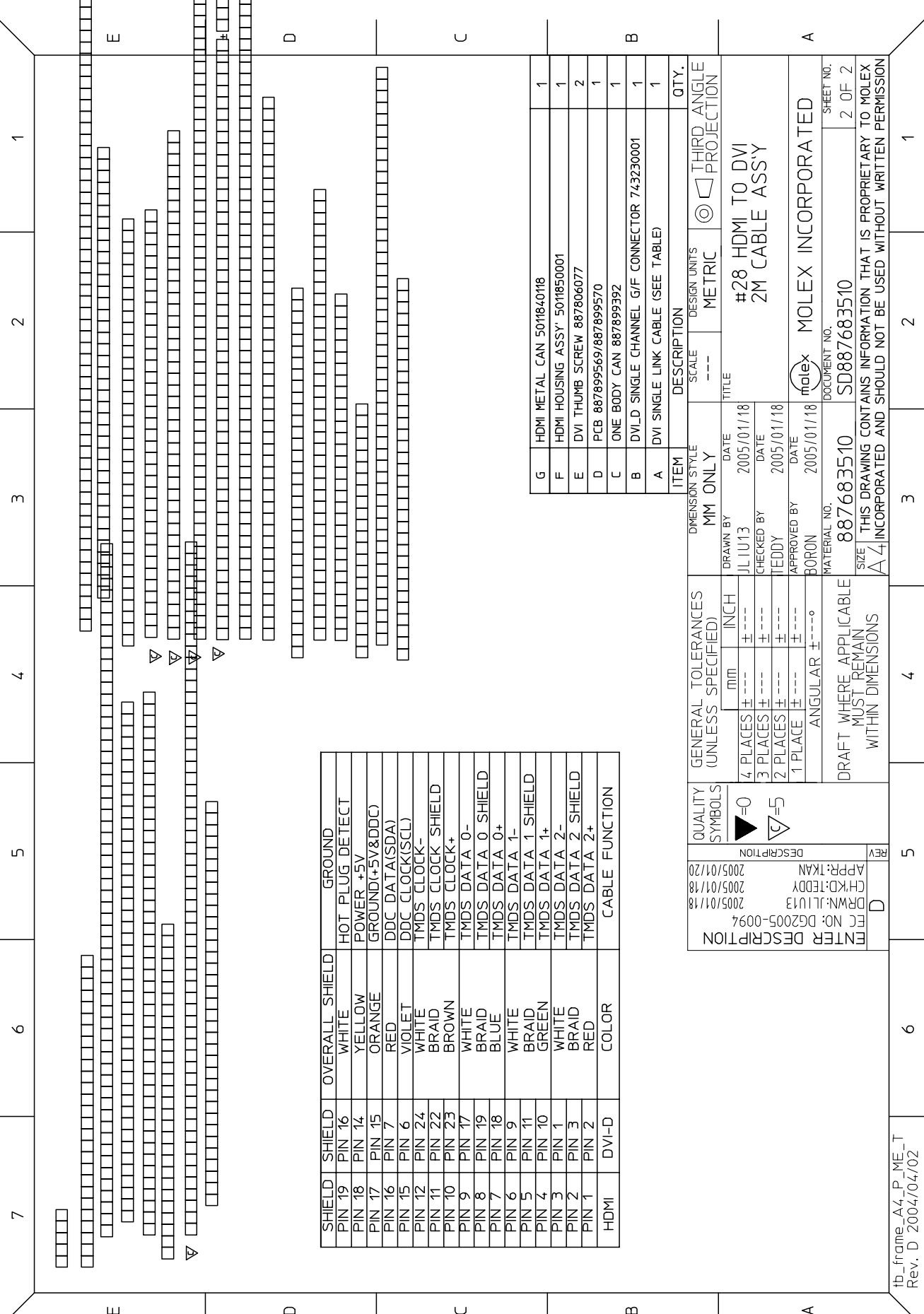


88768-3530	HDMI TO DVI-D(M) CABLE ASSY,5M	5000 ± 100	BLACK	7.3MM(TMS - AWG#28)	887808276
88768-3520	HDMI TO DVI-D(M) CABLE ASSY,3M	3000 ± 80	BLACK	7.3MM(TMS - AWG#28)	887808276
88768-3510	HDMI TO DVI-D(M) CABLE ASSY,2M	2000 ± 60	BLACK	7.3MM(TMS - AWG#28)	887808276
88768-3500	HDMI TO DVI-D(M) CABLE ASSY,1M	1000 ± 30	BLACK	7.3MM(TMS - AWG#28)	887808276

MM ONLY	SCALE	DESIGN UNITS	THIRD ANGLE PROJECTION
MM ONLY	---	METRIC	THIRD ANGLE PROJECTION
DRAWN BY: JLIU13		DATE: 2005/01/18	
CHECKED BY: TEDDY		DATE: 2005/01/18	
APPROVED BY: BORON		DATE: 2005/01/18	

GENERAL TOLERANCES (UNLESS SPECIFIED)	QUALITY SYMBOLS	DESCRIPTION	REV
4 PLACES ± 0.15 mm	▶=0	ENTER DESCRIPTION	D
3 PLACES ± 0.10 mm	◻=0	FC NO: DG2005-0094	
2 PLACES ± 0.05 mm		DRWN: JLIU13	
1 PLACE ± 0.02 mm		CHKD: TEDDY	
ANGULAR ± 0.10°		APPR: TKAN	
DRAFT WHERE APPLICABLE MUST REMAIN WITHIN DIMENSIONS		2005/01/20	

MATERIAL NO.	DOCUMENT NO.	SHEET NO.
887683510	SD887683510	1 OF 2
THIS DRAWING CONTAINS INFORMATION THAT IS PROPRIETARY TO MOLEX INCORPORATED AND SHOULD NOT BE USED WITHOUT WRITTEN PERMISSION		



SHIELD	SHIELD	OVERALL SHIELD	GROUND
PIN 19	PIN 16	WHITE	HOT PLUG DETECT
PIN 18	PIN 14	YELLOW	POWER +5V
PIN 17	PIN 15	ORANGE	GROUND(+5V&DDC)
PIN 16	PIN 7	RED	DDC DATA(SDA)
PIN 15	PIN 6	VIOLET	DDC CLOCK(SCL)
PIN 12	PIN 24	WHITE	TMDS CLOCK-
PIN 11	PIN 22	BRAID	TMDS CLOCK SHIELD
PIN 10	PIN 23	BROWN	TMDS CLOCK+
PIN 9	PIN 17	WHITE	TMDS DATA 0-
PIN 8	PIN 19	BRAID	TMDS DATA 0 SHIELD
PIN 7	PIN 18	BLUE	TMDS DATA 0+
PIN 6	PIN 9	WHITE	TMDS DATA 1-
PIN 5	PIN 11	BRAID	TMDS DATA 1 SHIELD
PIN 4	PIN 10	GREEN	TMDS DATA 1+
PIN 3	PIN 1	WHITE	TMDS DATA 2-
PIN 2	PIN 3	BRAID	TMDS DATA 2 SHIELD
PIN 1	PIN 2	RED	TMDS DATA 2+
HDMI	DVI-D	COLOR	CABLE FUNCTION

ENTER DESCRIPTION	DATE	REV
MC NO: DG2005-0094	2005/01/18	D
DRWN: JLIU13	2005/01/18	
CHKD: TEDDY	2005/01/18	
APP: TKAN	2005/01/20	

QUALITY SYMBOLS	GENERAL TOLERANCES (UNLESS SPECIFIED)
=0	mm ±---
=5	INCH ±---
	4 PLACES ±---
	3 PLACES ±---
	2 PLACES ±---
	1 PLACE ±---
	ANGULAR ±---°

DRAWN BY	DATE	MM ONLY	DATE
JLIU13	2005/01/18	2005/01/18	2005/01/18
CHECKED BY	DATE		
TEDDY	2005/01/18		
APPROVED BY	DATE		
BORON	2005/01/18		
MATERIAL NO.	DOCUMENT NO.		
887683510	SD887683510		

DRAFT WHERE APPLICABLE MUST REMAIN WITHIN DIMENSIONS	SIZE THIS DRAWING CONTAINS INFORMATION THAT IS PROPRIETARY TO MOLEX INCORPORATED AND SHOULD NOT BE USED WITHOUT WRITTEN PERMISSION
--	--

ITEM	DESCRIPTION	SCALE	DESIGN UNITS	THIRD ANGLE PROJECTION	QTY.
G	HDMI METAL CAN 501840118	---	METRIC		1
F	HDMI HOUSING ASSY' 5011850001	---	METRIC		1
E	DVI THUMB SCREW 887806077	---	METRIC		2
D	PCB 887899569/887899570	---	METRIC		1
C	ONE BODY CAN 887899392	---	METRIC		1
B	DVI-D SINGLE CHANNEL G/F CONNECTOR 743230001	---	METRIC		1
A	DVI SINGLE LINK CABLE (SEE TABLE)	---	METRIC		1