

**PLEASE CHECK WWW.MOLEX.COM FOR LATEST PART INFORMATION**

**Part Number:** **0192150115**  
**Status:** **Active**  
**Description:** SEAMLESS BUTT SPLICE TAPED (BS-331T)

**Documents:**

[Drawing \(PDF\)](#) [RoHS Certificate of Compliance \(PDF\)](#)

**General**

Product Family	Splices
Series	<u>19215</u>
Crimp Quality Equipment	Yes
Mil-Spec	N/A
Product Name	Butt, VersaKrimp™

**Physical**

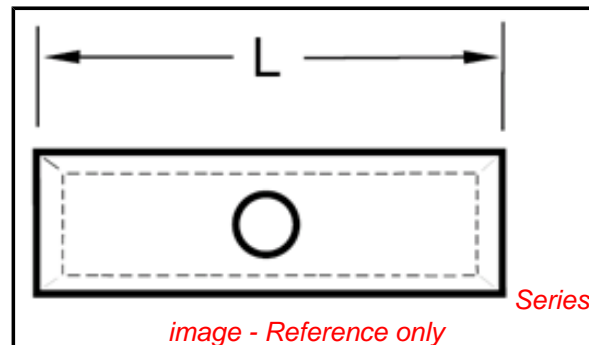
Barrel Type	Closed - Brazed
Insulation	None
Packaging Type	Adhesive Tape on Reel
Wire Size AWG	14, 16

**Material Info**

Old Part Number	BS-331T
-----------------	---------

**Reference - Drawing Numbers**

Sales Drawing	SD-19215-002
---------------	--------------



**EU RoHS**

**ELV and RoHS  
Compliant**

**REACH SVHC**

Not Reviewed

**Halogen-Free**

**Status**

**Not Reviewed**

**China RoHS**



**Need more information on product  
environmental compliance?**

Email [productcompliance@molex.com](mailto:productcompliance@molex.com)  
 For a multiple part number RoHS Certificate of  
 Compliance, [click here](#)

Please visit the [Contact Us](#) section for any  
 non-product compliance questions.

**Search Parts in this Series**

19215Series

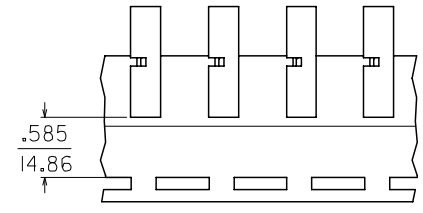
**Application Tooling | FAQ**

*Tooling specifications and manuals are  
 found by selecting the products below.  
 Crimp Height Specifications are then  
 contained in the Application Tooling  
 Specification document.*

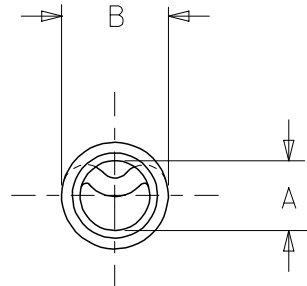
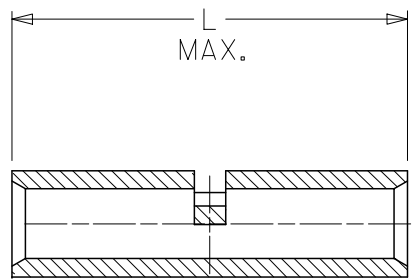
**Global**

<b>Description</b>	<b>Product #</b>
ATP Perishable Tool Kit used in ATP presses that process product on tape	<u>0190270055</u>
Mini-Mac™ Applicator	<u>0638858100</u>

MATERIAL NUMBER	ENG. NUMBER	"L" MAX	"A" MIN.	"B" MAX	PACKAGING
192150018	BS-331	.675 (17.10)	.091 (2.31)	.160 (4.06)	LOOSE PIECE
192150022	BS-342-MX	.605 (15.37)	.088 (2.24)	.160 (4.06)	
192150115	BS-331T	.675 (17.10)	.091 (2.31)	.160 (4.06)	TAPE MOUNTED
192150250	BS-331US	.675 (17.10)	.091 (2.31)	.160 (4.06)	LOOSE PIECE
192150255	BS-331UST	.675 (17.10)	.091 (2.31)	.160 (4.06)	TAPE MOUNTED



PARTS ON TAPE



SALES DRAWING

- NOTES:  
 1. MATERIAL: COPPER.  
 2. PLATING: ELECTRO-TIN.  
 3. ALL DIMENSIONS IN INCHES/(MM).

OBSO P/N 192150020 & -21 EC NO: ETC2006-0022 DRW:DMYRICK 2005/08/15 CHKD:RDEROSS 2005/08/15 APPR:RDEROSS 2005/08/15	QUALITY SYMBOLS
	▼=0
	▽=0
	REV

DESCRIPTION
REV

GENERAL TOLERANCES (UNLESS SPECIFIED)	mm	INCH
4 PLACES	± .005	± .0004
3 PLACES	± .004	± .0003
2 PLACES	± .003	± .0002
1 PLACE	± .002	± .0001
ANGULAR	± .005°	
DRAFT WHERE APPLICABLE MUST REMAIN WITHIN DIMENSIONS		

DIMENSION STYLE IN/MM	
DRAWN BY	DATE
JLOMASTRO	05/01/07
CHECKED BY	DATE
RDEROSS	05/01/07
APPROVED BY	DATE
RDEROSS	05/01/07
MATERIAL NO.	SEE CHART
SIZE	B

SCALE	DESIGN UNITS INCH	THIRD ANGLE PROJECTION
TITLE		
BUTT CONNECTOR SEAMLESS 16-14 AWG WIRE SIZE		
MOLEX INCORPORATED		
MATERIAL NO.	DOCUMENT NO.	SHEET NO.
SD-19215-002		1 OF 1
THIS DRAWING CONTAINS INFORMATION THAT IS PROPRIETARY TO MOLEX INCORPORATED AND SHOULD NOT BE USED WITHOUT WRITTEN PERMISSION		