

PLEASE CHECK WWW.MOLEX.COM FOR LATEST PART INFORMATION

Part Number: **0192020035**
Status: **Active**
Description: BUTT SPLICE TAPED (BS-N-331T)

Documents:

[Drawing \(PDF\)](#) [RoHS Certificate of Compliance \(PDF\)](#)

Agency Certification

UL E32244

General

Product Family Splices
 Series 19202
 Crimp Quality Equipment Yes
 Mil-Spec N/A
 Product Name Butt, NylaKrimp™

Physical

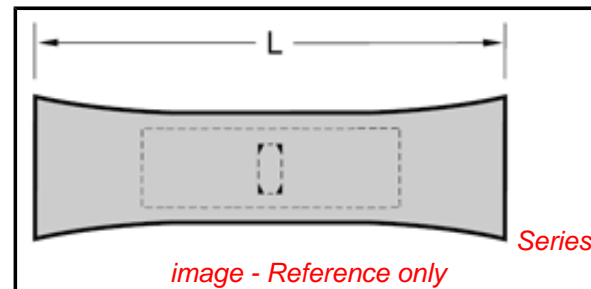
Barrel Type Closed - Brazed
 Flammability 94V-0
 Insulation Nylon (PA)
 Packaging Type Adhesive Tape on Reel
 Wire Size AWG 14, 16

Material Info

Old Part Number BS-N-331T

Reference - Drawing Numbers

Sales Drawing 60002-11C, 6000211C



EU RoHS

ELV and RoHS

Compliant

REACH SVHC

Not Reviewed

Halogen-Free

Status

Not Reviewed

China RoHS



Need more information on product environmental compliance?

Email productcompliance@molex.com
 For a multiple part number RoHS Certificate of Compliance, [click here](#)

Please visit the [Contact Us](#) section for any non-product compliance questions.

Search Parts in this Series

19202Series

Application Tooling | FAQ

Tooling specifications and manuals are found by selecting the products below. Crimp Height Specifications are then contained in the Application Tooling Specification document.

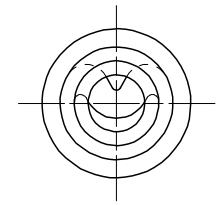
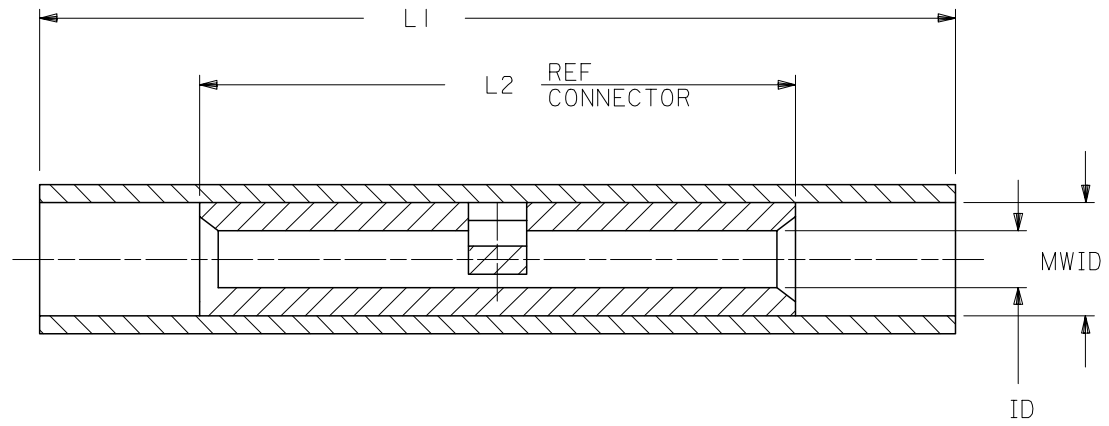
Global

Description	Product #
Crimp Dies for MTA-100 Tape Applicator used in 3BF Press, MTA-105 Tape Applicator used in TM-2000™ Press, and ATP-301 Air Crimping Press for Mylar Tape Mounted Terminals	<u>0192880098</u>

PART NO.	INSULATION COLOR	WIRE SIZE	ID	L1 MAX	L2 MAX.	MWID
AS-N-345	RED	22-18	.059	1.035	.675	.130
BS-N-331	BLUE	16-14	.091	1.080	.675	.140
CS-N-346	YELLOW	12-10	.138	1.300	.827	.223

(B)

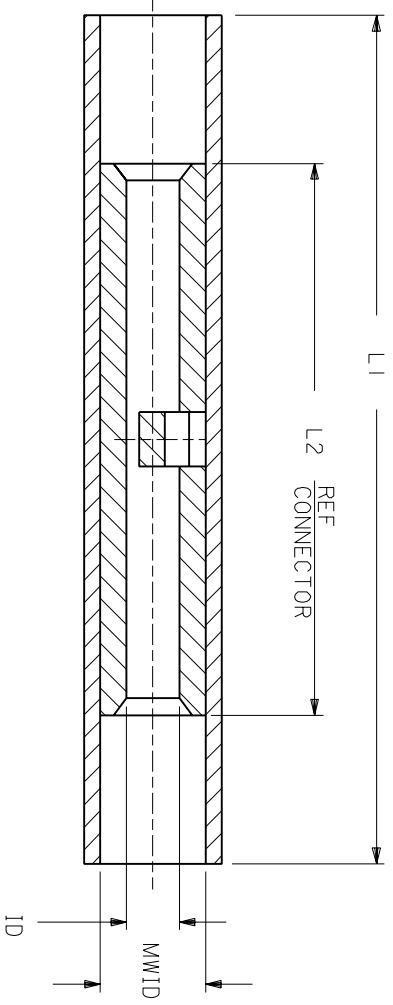
NOTES:
 1. MATERIAL:
 INSULATION: NYLON
 CONNECTOR: TIN PLATED SEAMLESS COPPER
 3. IF NECESSARY: SLIGHT FLARE ON ONE END
 ACCEPTABLE FOR ASSEMBLY PURPOSES.



CUSTOMER DRAWING

REVISED & REDRAWN EC NO: B DRWN: SHADECK 2005/06/13 CHKD: RDEROSS 2005/06/21 APPR: RDEROSS 2005/06/21	DESCRIPTION NYLAKRIMP BUTT CONNECTOR	QUALITY SYMBOLS	GENERAL TOLERANCES (UNLESS SPECIFIED)	DIMENSION STYLE IN/MM	SCALE 4:1	DESIGN UNITS INCH	THIRD ANGLE PROJECTION																											
		$\nabla = 0$ $\sphericalangle = 0$	<table border="1"> <thead> <tr> <th></th> <th>mm</th> <th>INCH</th> </tr> </thead> <tbody> <tr> <td>4 PLACES</td> <td>\pm---</td> <td>\pm---</td> </tr> <tr> <td>3 PLACES</td> <td>\pm---</td> <td>\pm---</td> </tr> <tr> <td>2 PLACES</td> <td>\pm---</td> <td>\pm---</td> </tr> <tr> <td>1 PLACE</td> <td>\pm---</td> <td>\pm---</td> </tr> </tbody> </table>		mm	INCH	4 PLACES	\pm ---	\pm ---	3 PLACES	\pm ---	\pm ---	2 PLACES	\pm ---	\pm ---	1 PLACE	\pm ---	\pm ---	<table border="1"> <tr> <td>DRAWN BY</td> <td>DATE</td> </tr> <tr> <td>EMF</td> <td>07/03/91</td> </tr> <tr> <td>CHECKED BY</td> <td>DATE</td> </tr> <tr> <td>JM</td> <td>07/03/91</td> </tr> <tr> <td>APPROVED BY</td> <td>DATE</td> </tr> <tr> <td>FP</td> <td>07/03/91</td> </tr> </table>	DRAWN BY	DATE	EMF	07/03/91	CHECKED BY	DATE	JM	07/03/91	APPROVED BY	DATE	FP	07/03/91	TITLE NYLAKRIMP BUTT CONNECTOR		
			mm	INCH																														
		4 PLACES	\pm ---	\pm ---																														
3 PLACES	\pm ---	\pm ---																																
2 PLACES	\pm ---	\pm ---																																
1 PLACE	\pm ---	\pm ---																																
DRAWN BY	DATE																																	
EMF	07/03/91																																	
CHECKED BY	DATE																																	
JM	07/03/91																																	
APPROVED BY	DATE																																	
FP	07/03/91																																	
DRAFT WHERE APPLICABLE MUST REMAIN WITHIN DIMENSIONS				MATERIAL NO. SEE TABLE	DOCUMENT NO. 60002-11C	SHEET NO. 1 OF 1																												

PART NO.	INSULATION COLOR	WIRE SIZE	ID	L1 MAX	L2 MAX	MWID
AS-N-345	RED	22-18	.059	1.035	.675	.130
BS-N-331	BLUE	16-14	.091	1.080	.675	.160
CS-N-346	YELLOW	12-10	.138	1.300	.827	.223



NOTES:
 1. MATERIAL:
 INSULATION: NYLON
 CONNECTOR: TIN PLATED SEAMLESS COPPER
 3. IF NECESSARY: SLIGHT FLARE ON ONE END ACCEPTABLE FOR ASSEMBLY PURPOSES.

CUSTOMER DRAWING

DIMENSIONS SHOWN (METRIC) INCH
 UNLESS OTHERWISE SPECIFIED
 TOLERANCES: ANGULAR = 1/2°

	INCH	METRIC
3 PLACE	± .005	± 0.13
2 PLACE	± .01	± 0.25
1 PLACE	± ---	± ---

DRAFT WHERE APPLICABLE MUST REMAIN WITHIN DIMENSIONS

DRWG. BY	EMF	CHK'D. BY	JM
APP'D. BY	FP	SCALE	NO: NE

DRWG. NO. 60002-11C

REVISE ONLY ON CAD SYSTEM

NYLAKRIMP BUTT CONNECTOR

LTR.	REVISIONS
A	ADD P/N AND UPDATE DRAWINGS ET80539 12/18 HEB

molex **ETC INC.** PINELLAS PARK, FLA. 33781 U.S.A. SHEET NO. 1 OF 1 DATE 91/07/03

PART NO. 60002-11C

FILE NAME: SEE TABLE THIS DRAWING CONTAINS INFORMATION THAT IS PROPRIETARY TO MOLEX-ETC INC. AND SHOULD NOT BE USED WITHOUT WRITTEN PERMISSION. DIV. ET A