

**PLEASE CHECK WWW.MOLEX.COM FOR LATEST PART INFORMATION**

**Part Number:** [0190540098](#)  
**Status:** **Active**  
**Description:** InsulKrimp™ Ring Tongue Terminal for 14-16 Heavy Duty AWG Wire

**Documents:**

[Drawing \(PDF\)](#) [RoHS Certificate of Compliance \(PDF\)](#)  
[Product Specification PS-19902-009 \(PDF\)](#)

**Agency Certification**

CSA LR18689  
 UL E32244

**General**

Product Family Ring and Spade Terminals  
 Series [19054](#)  
 Comments Heavy Duty  
 Crimp Quality Equipment Yes  
 Mil-Spec N/A  
 Product Name InsulKrimp™  
 Type Ring

**Physical**

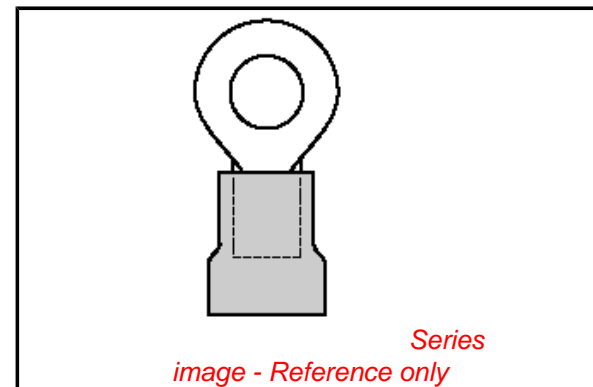
Barrel Type Closed  
 Color - Resin Natural  
 Flammability 94V-0  
 Insulation PVC  
 Material - Plating Mating Tin  
 Packaging Type Bag  
 Plating min: Mating (µin) 100  
 Plating min: Mating (µm) 2.5  
 Plating min: Termination (µin) 100  
 Plating min: Termination (µm) 2.5  
 Stud Size 5/16" (M8)  
 Termination Interface: Style Crimp or Compression  
 Wire Insulation Diameter 6.40mm (.250") max.  
 Wire Size AWG 14, 16  
 Wire Size mm² 1.30 - 2.00

**Material Info**

Old Part Number B-230-56HDX

**Reference - Drawing Numbers**

Product Specification PS-19902-009  
 Sales Drawing SD-19054-001



**EU RoHS**

**ELV and RoHS Compliant**  
**REACH SVHC**  
 Not Reviewed  
**Halogen-Free Status**  
 Not Reviewed

**China RoHS**



**Need more information on product environmental compliance?**

Email [productcompliance@molex.com](mailto:productcompliance@molex.com)  
 For a multiple part number RoHS Certificate of Compliance, [click here](#)

Please visit the [Contact Us](#) section for any non-product compliance questions.

**Search Parts in this Series**

[19054Series](#)

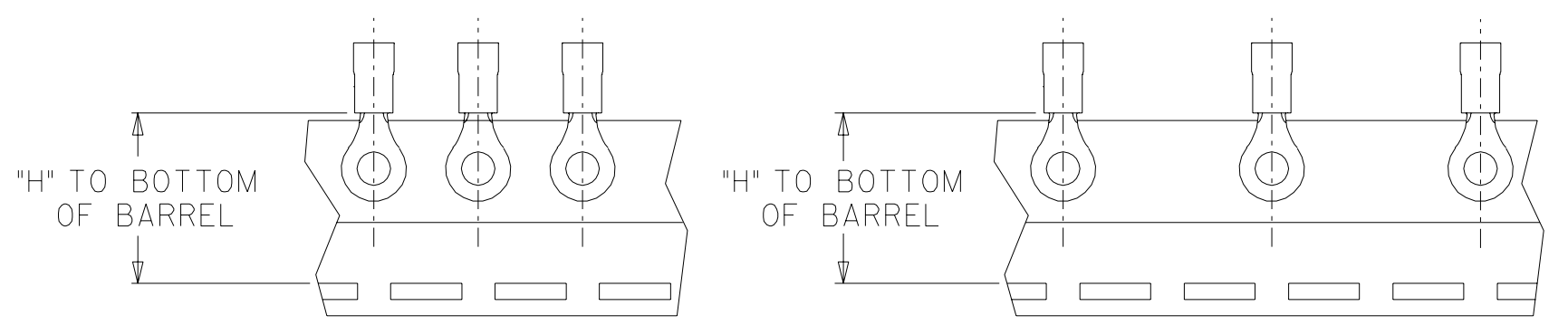
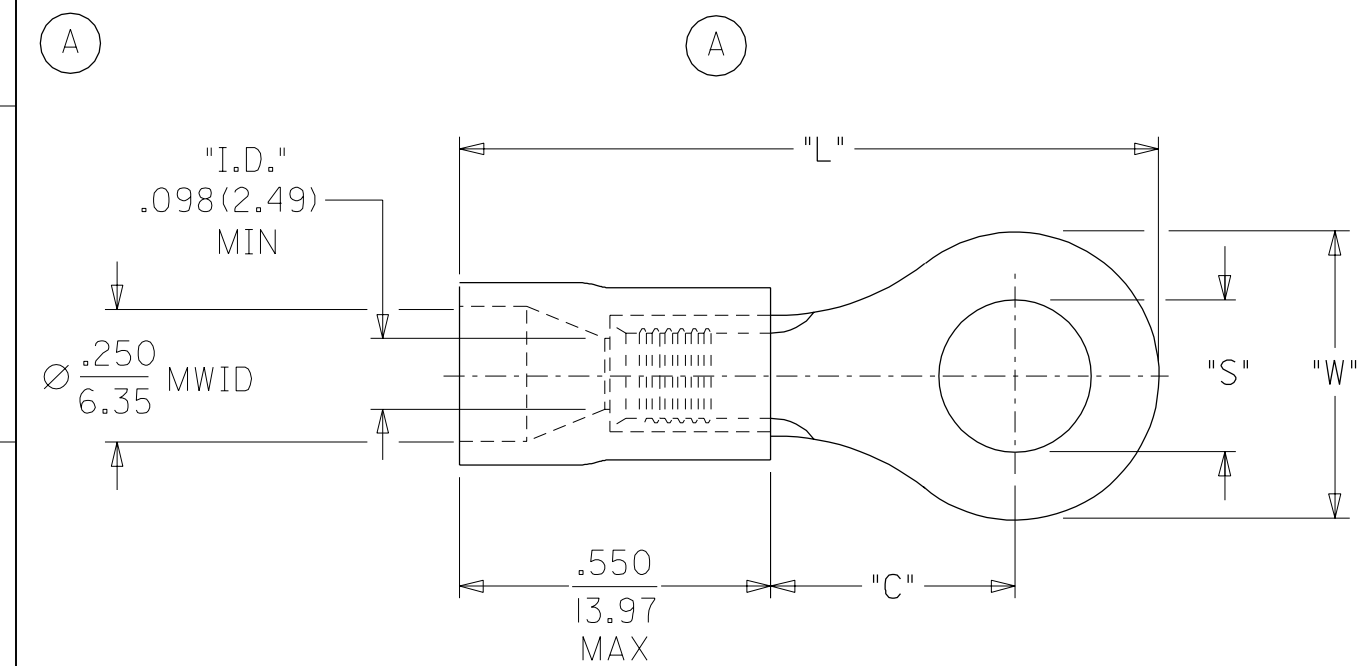
**Application Tooling | [FAQ](#)**

*Tooling specifications and manuals are found by selecting the products below. Crimp Height Specifications are then contained in the Application Tooling Specification document.*

**Global**

| Description                                    | Product #                  |
|--|----------------------------|
| Hand Crimp Tool                                | <a href="#">0640010100</a> |
| Hand Crimp Tool                                | <a href="#">0640011600</a> |
| Crimp Head for the AT-200™ Pneumatic Hand Tool | <a href="#">0640050100</a> |

| MATERIAL NO. LOOSE PIECE | ENG. NO.    | MATERIAL NO. TAPE MOUNTED | ENG. NO.     | STUD SIZE | ±.003 "S"    | "W" MAX. (A) | "C" MIN.     | "L" MAX. (A)  | "H" ±.020/0.51 |
|--------------------------|-------------|---------------------------|--------------|-----------|--------------|--------------|--------------|---------------|----------------|
| 190540063                | B-201-12HDX | 190540064                 | B-201-12HDXT | 12        | .515 (13.10) | .760 (19.30) | .611 (15.52) | 1.571 (39.90) | 1.300 (33.02)  |
| 190540065                | B-201-14HDX | -----                     | -----        | 14        | .265 (6.73)  |              |              |               |                |
| 190540066                | B-201-38HDX | 190540068                 | B-201-38HDXT | 38        | .390 (9.91)  |              |              |               |                |
| 190540069                | B-201-56HDX | -----                     | -----        | 56        | .328 (8.33)  |              |              |               |                |
| 190540070                | B-201-76HDX | 190540071                 | B-201-76HDXT | 76        | .453 (11.51) | .385 (9.78)  | .303 (7.70)  | 1.076 (27.33) |                |
| 190540090                | B-228-06HDX | 190540091                 | B-228-06HDXT | 6         | .146 (3.71)  |              |              |               |                |
| 190540092                | B-228-08HDX | 190540093                 | B-228-08HDXT | 8         | .173 (4.39)  |              |              |               |                |
| 190540094                | B-228-10HDX | 190540095                 | B-228-10HDXT | 10        | .198 (5.03)  | .540 (13.72) | .393 (9.98)  | 1.243 (31.57) | .980 (24.89)   |
| 190540096                | B-230-10HDX | 190540021                 | B-230-10HDXT | 10        | .198 (5.03)  |              |              |               |                |
| 190540097                | B-230-14HDX | 190540022                 | B-230-14HDXT | 14        | .265 (6.73)  | .292 (7.42)  | .303 (7.70)  | 1.032 (26.21) |                |
| 190540098                | B-230-56HDX | 190540099                 | B-230-56HDXT | 56        | .328 (8.33)  |              |              |               |                |
| 190540103                | B-236-04HDX | 190540023                 | B-236-04HDXT | 4         | .119 (3.02)  |              |              |               |                |
| 190540104                | B-236-06HDX | 190540024                 | B-236-06HDXT | 6         | .146 (3.71)  |              |              |               |                |
| 190540105                | B-236-08HDX | 190540025                 | B-236-08HDXT | 8         | .173 (4.39)  | .598 (15.19) | .466 (11.84) | 1.347 (34.21) | 1.172 (29.77)  |
| 190540124                | B-240-14HDX | 190540125                 | B-240-14HDXT | 14        | .265 (6.73)  |              |              |               |                |
| 190540126                | B-240-38HDX | 190540127                 | B-240-38HDXT | 38        | .390 (9.91)  |              |              |               |                |
| 190540128                | B-240-56HDX | -----                     | -----        | 56        | .328 (8.33)  |              |              |               |                |



### SALES DRAWING

NOTE(S):  
 1. MATERIAL: COPPER (.050/1.27)  
 2. PLATING: ELECTROPLATE TIN.  
 3. ALL DIMENSIONS IN INCHES/(MM).  
 WIRE SIZE: 16-14 AWG  
 1.0 - 2.5 MM<sup>2</sup>

|   |  |  |                                |  |  |                                    |  |   |     |  |
|---|--|--|--------------------------------|--|--|------------------------------------|--|---|-----|--|
| UPDATE TO MX STDS.<br>EC NO. ETC2003-0233<br>DRWN: DLM 04/05/06<br>CHK: HB 04/05/06<br>APPR: RWD 04/05/06 | QUALITY SYMBOLS                                      | GENERAL TOLERANCES: (UNLESS SPECIFIED) |                                | SCALE NTS  | DESIGN UNITS   | THIRD ANGLE PROJECTION             | DIMENSIONS:  | SHT   | REV |  |
|   | MAJOR  | mm                                     | INCH                           | <input type="checkbox"/> mm <input checked="" type="checkbox"/> INCH | <input type="checkbox"/> mm <input checked="" type="checkbox"/> INCH   | <input type="checkbox"/> mm ONLY   | <input type="checkbox"/> mm <input checked="" type="checkbox"/> INCH |   |     |  |
|   | CRITICAL   | 4 PLACES ±0.----- ±.-----              | 3 PLACES ±0.--- ±.005          | 2 PLACES ±0.13 ±.010   | 1 PLACE ±0.25 ±.---  | DRAWN BY & DATE<br>DLM 03/03/14    |  | TITLE: RING TONGUE TERMINAL<br>HEAVY-DUTY INSULKRIMP<br>16-14 AWG     |     |  |
|   | DESCRIPTION  | ANGULAR: ±1/2°                         |                                | CHECKED BY & DATE<br>SB 03/03/14                                     |  | APPROVED BY & DATE<br>RWD 03/03/14 |  | MATERIAL NO. DRAWING NO. SHEET NO.<br>(SEE CHART) SD-19054-001 1 OF 1 |     |  |
| REV   | DRAFT WHERE APPLICABLE MUST REMAIN WITHIN DIMENSIONS |  | CAD FILENAME<br>SD19054001.DGN |  | THIS DRAWING CONTAINS INFORMATION THAT IS PROPRIETARY TO MOLEX INCORPORATED AND SHOULD NOT BE USED WITHOUT WRITTEN PERMISSION. |                                    | MOLEX INCORPORATED   |   |     |  |