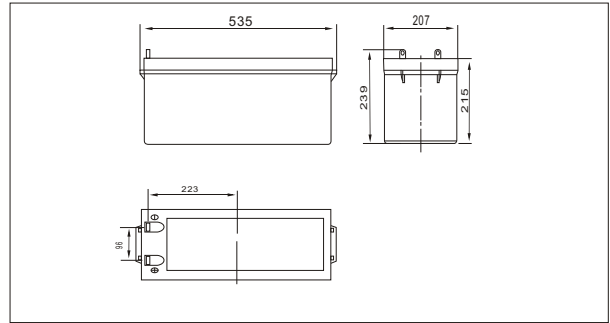




SW121600E(12V160AH)



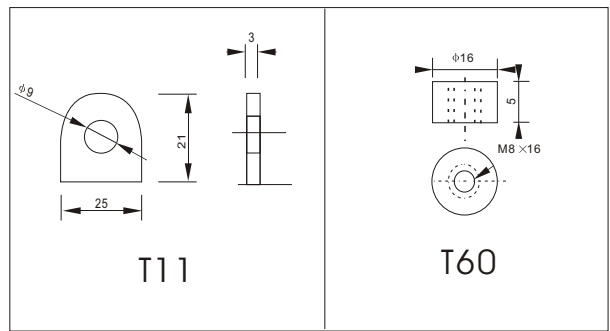
Outer dimensions (mm)



Specifications

Nominal Voltage		12V
Rated capacity (10hour rate)		160 Ah
Dimensions	Total Height	239 mm (9.41 inches)
	Height	215 mm (8.46 inches)
	Length	534 mm (21.1 inches)
	Width	207 mm (8.15 inches)
Weight Approx		52 Kg (115 lbs)

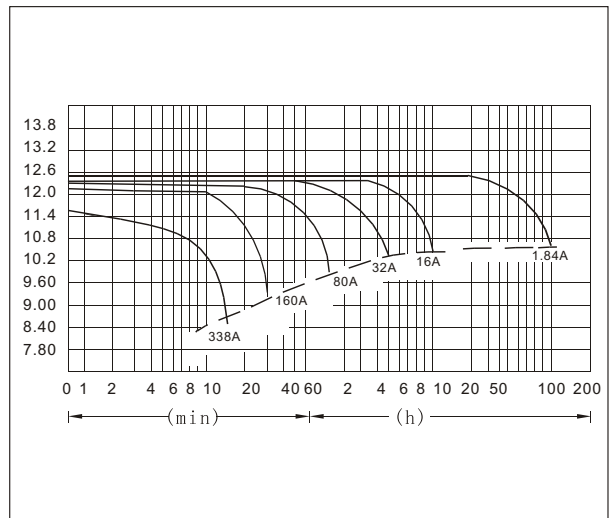
Terminal Type (mm)



Characteristics

Capacity 25°C(77°F)	10 hour rate(16A)	160 AH
	5 hour rate(25.6A)	128 AH
	1 hour rate(88A)	88 AH
1.5 hour discharge to 10.5V		64 A
Internal Resistance	Full charged Battery at 25°C(77°F) 4.5 mΩ	
Capacity affected by Temperature (10hour rate)	40°C(104°F)	102%
	25°C(77°F)	100%
	0°C(32°F)	85%
	-15°C(5°F)	65%
Self-Discharge at 25°C(77°F)	Capacity after 3 month storage	91%
	Capacity after 6 month storage	82%
	Capacity after 12 month storage	64%
Terminal	T11, T60	
Charge (constant Voltage)	Cycle	Initial Charging Current less than 40 A Voltage 14.10-14.40V
	Float	Voltage 13.50-13.80V

Discharge Curves 25°C(77°F)



Constant Current(Amp) and Constant Power(Watt) Discharge Table at 25°C(77°F)

Time	10min	30min	1h	3h	4h	5h	8h	10h	20h	50h	100h	
9.60V	A	338	182	96	41.1	32.0	26.4	18.6	16.8	9.07	3.78	1.94
	W	3749	1954	1112	476	371	306	215	195	105.1	45.0	23.0
10.20V	A	328	178	90.2	40.0	31.2	25.9	18.2	16.4	8.85	3.65	1.89
	W	3606	1936	1045	463	361	300	211	190	102.5	43.4	22.4
10.50V	A	313	169	87	39.0	30.7	25.6	18.1	16.0	8.74	3.58	1.84
	W	3495	1827	1012	452	356	296	209	188	101.2	42.7	21.9
10.80V	A	293	163	84	38.1	30.2	25.0	17.6	15.6	8.64	3.52	1.82
	W	3358	1758	967	443	348	291	205	186	100.6	41.9	21.8
11.10V	A	269	150	80	36.8	29.3	24.3	17.1	15.20	8.21	3.46	1.76
	W	3301	1744	942	438	347	289	204	181	97.7	41.1	21.0