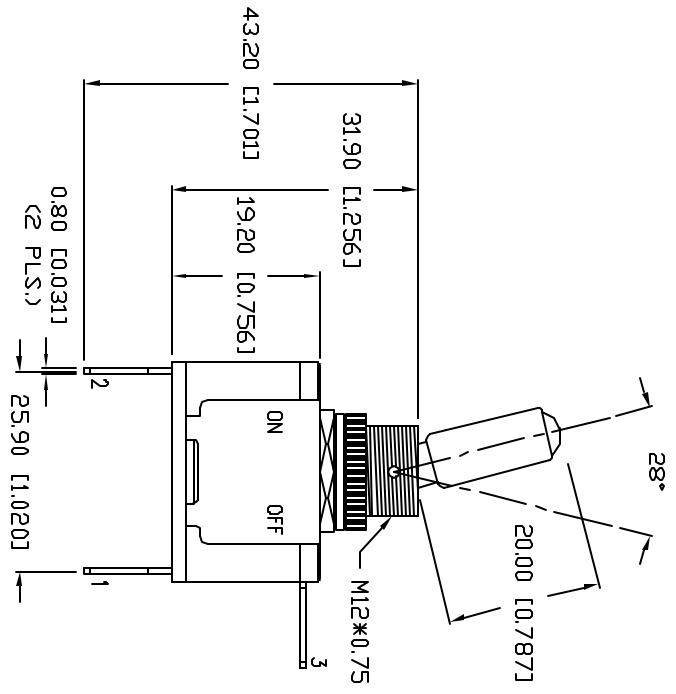
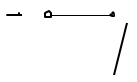
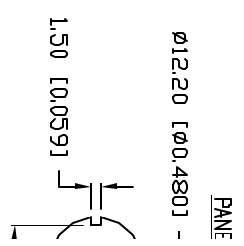
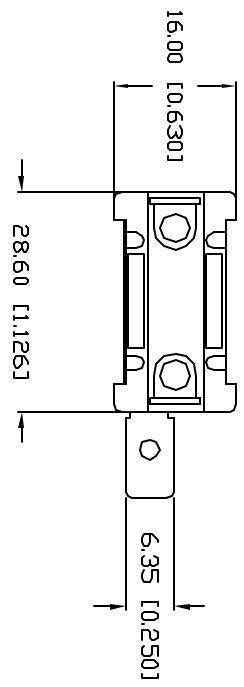


UNCONTROLLED DOCUMENT

CLS-T	
REV.	E.C.N. NUMBER
A	E.C.N. #11148.



CHARACTERISTICS	
RATING	
LED COLOR	
CIRCUIT OPERATION	
NO. OF PINS	
SWITCH OPERATION	

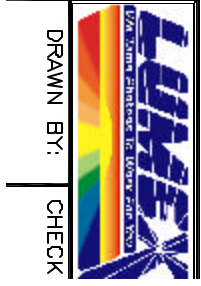


*UNLESS OTHERWISE SPECIFIED TOLERANCES PER DECIMAL PRECISION ARE: X+1 (±0.030), XX+0.5 (±0.020), XXX+0.25 (±0.010), XXXX+0.127 (±0.005), LEAD SIZE+0.06 (±0.002), LEAD LENGTH-

REV. A
PART NUMBER
CLS-TC11A12250G

GREEN LED ILLUMINATED TOGGLE SWITCH,
RATED FOR 20A AT 12VDC.

CONFIDENTIAL INFORMATION
THE INFORMATION CONTAINED IN THIS DOCUMENT IS THE PROPERTY OF LUMEX INC. EXCEPT AS SPECIFICALLY AUTHORIZED IN WRITING BY LUMEX INC., THE HOLDER OF THIS DOCUMENT SHALL KEEP ALL INFORMATION CONTAINED HEREIN CONFIDENTIAL AND SHALL PROTECT SAME IN WHOLE OR IN PART FROM DISCLOSURE AND DISSEMINATION TO ALL THIRD PARTIES.
RELIABILITY NOTE
OUR MANY YEARS OF EXPERIENCE DATA ACCUMULATION INDICATE THAT SOLDER HEAT IS A MAJOR CAUSE OF EARLY AND FUTURE FAILURE.
DRAWN BY: CHECK



UNICON