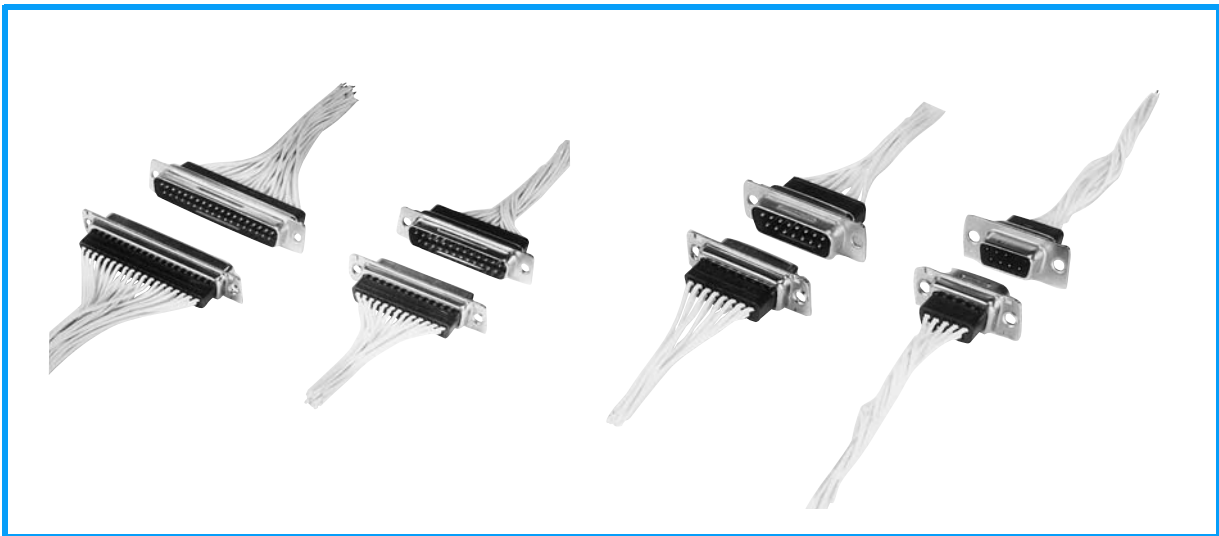


Crimp Type



FEATURE

- Connector for crimp-wiring equipped with crimp-type press-contacts (compatible with AWG 22 to 30)
- Number of contacts : 9, 15, 25 and 37
- Ni-plated metal shell surface; beat-process to plug-connector shell
- Connection of cable and plug can be shielded by a metalize-finished hood, improving resistance against EMI.

J

17DE

SPECIFICATION

Voltage Rating	300V AC (r.m.s.)
Current Rating	3A/Contact
Dielectric Withstanding Voltage	1,000V AC (r.m.s.) for 1 minute
Insulation Resistance	1,000M Ω min. at 500V DC
Contact Resistance	20m Ω max.
Wire Accommodation	Stranded wire of AWG22, 24, 26, 28, 30 Outer diameter of insulator : ϕ 0.8 to ϕ 1.4
Temperature	-25°C to +85°C

MATERIAL/FINISH

P/N	MATERIAL/FINISH
Block	PBT resin/(UL94V-0) color black
Shell	Steel/Nickel Plating
Contact	Copper alloy/Gold over Nickel plating
Eyelet	Brass/Nickel Plating

■ Crimp-Type Connector

17DE-13250-C

CONNECTOR STYLE

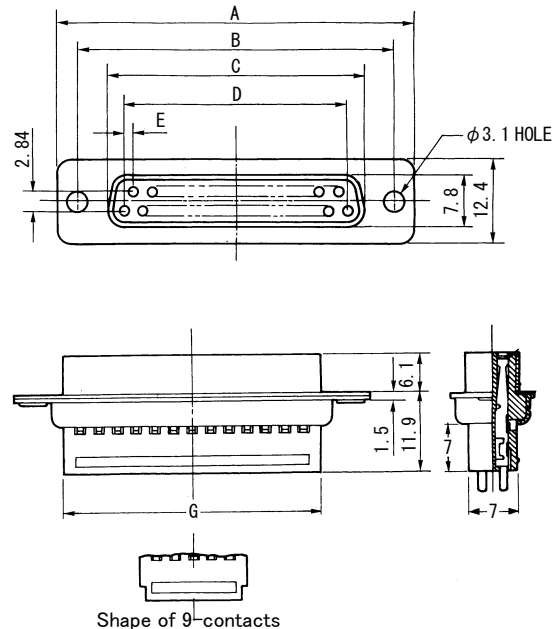
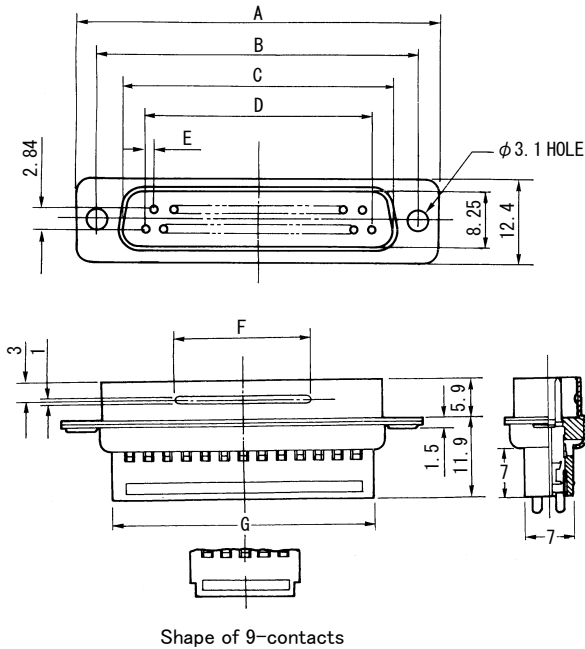
 13 : Socket connector
 23 : Pin connector

NO.OF.CONTACTS

09, 15, 25, 37

17DE-23□□0-C

17DE-13□□0-C



J
17DE

No. of Contacts	P/N	A	B	C	D	E	F	G
9	17DE-23090-C	30.7	24.99	16.80	10.98	(1.37)	8	16.0
15	17DE-23150-C	39.0	33.32	25.12	19.20	(1.37)	12	24.4
25	17DE-23250-C	52.9	47.04	38.84	33.12	(1.38)	20	38.1
37	17DE-23370-C	69.2	63.50	55.30	49.68	(1.38)	20	54.5

No. of Contacts	P/N	A	B	C	D	E	G
9	17DE-13090-C	30.7	24.99	16.30	10.98	(1.37)	16.0
15	17DE-13150-C	39.0	33.32	24.65	19.20	(1.37)	24.4
25	17DE-13250-C	52.9	47.04	38.35	33.12	(1.38)	38.1
37	17DE-13370-C	69.2	63.50	54.80	49.68	(1.38)	54.5

■ Crimp-Type Contact

17D-203PCR(R10000)

CONTACT PLATING

2 : Mating area : Gold ($0.4 \mu\text{m}$) over Nickel Plating
 Crimp area : Gold Flash over Nickel Plating
 3 : Gold Flash over Nickel Plating

APPLICABLE WIRE

03 : AWG26~30 (standard wire)
 Outer diameter of insulator : $\phi 0.8 \sim \phi 1.2$
 04 : AWG22~24 (standard wire)
 Outer diameter of insulator : $\phi 1.1 \sim \phi 1.4$

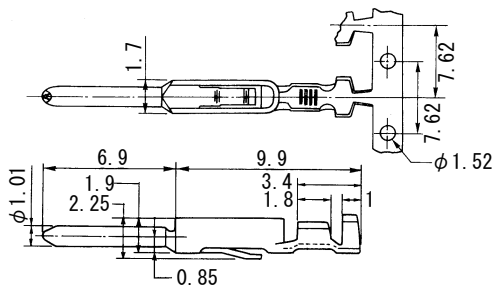
S : Socket contact
 P : Pin contact

No. OF CONTACTS

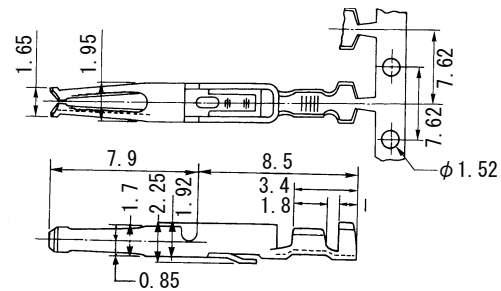
R10000 : Reel contacts, 10000/reel
 P500 : Bulk contacts, 500/pack

Rear-release type

● Pin contact



● Socket contact



J
17DE

P/N	Surface finishing	
	Connecting section	Wiring section
17D-2□□PCR(□□)	Gold (0.4μ) over Nickel Plating	Gold Flash over Nickel Plating
17D-3□□PCR(□□)	Gold Flash over Nickel Plating	Gold Flash over Nickel Plating

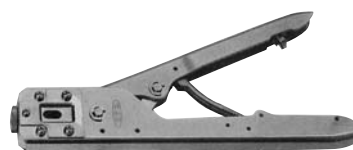
P/N	Surface finishing	
	Connecting section	Wiring section
17D-2□□SCR(□□)	Gold (0.4μ) over Nickel Plating	Gold Flash over Nickel Plating
17D-3□□SCR(□□)	Gold Flash over Nickel Plating	Gold Flash over Nickel Plating

Tools

● Manual wiring tool

P/N : 357J-10422 (For 17D-□□3□CR Contact type)

P/N : 357J-15475 (For 17D-□□4□CR Contact type)



● Tool for inserting/removing contact

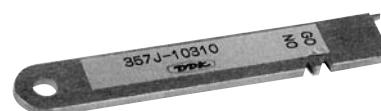
P/N : 357J-10309



● Tool for erecting contact ratch

Designation : 357J-10310

Used to erect ratch after removing contact inserted into insert-block by error.



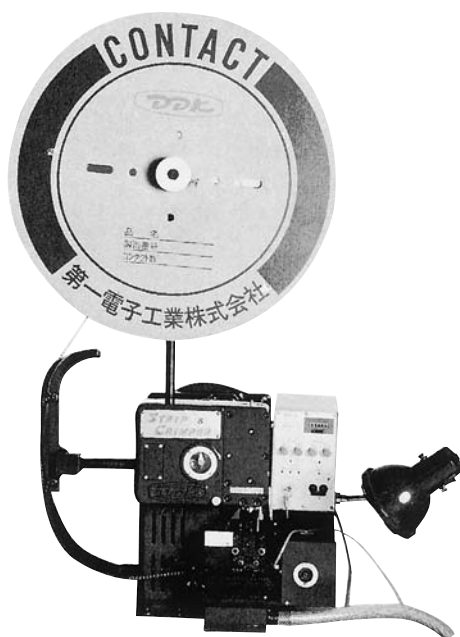
● Semi-automatic crimping machine

Stripper crimper

Designation : AP-A10424 (including press unit)

Power supply : AC100V (0.2kW)

Weight : 88kg



Crimper

Designation : AP-A10423 (including press unit)

Power supply : AC100V

Weight : 45kg

