

PLEASE CHECK WWW.MOLEX.COM FOR LATEST PART INFORMATION

Part Number: [0684160300](#)
Status: **Active**
Description: 4.75mm (.187") Tab Housing for Drum Motor, 3 Circuits

Documents:

[Drawing \(PDF\)](#) [RoHS Certificate of Compliance \(PDF\)](#)
[Product Specification PS-68416-001 \(PDF\)](#)

Agency Certification

UL E29179

General

Product Family Crimp Housings
 Series [68416](#)
 Product Name N/A

Physical

Circuits (maximum) 3
 Color - Resin Natural
 Flammability 94V-0
 Gender Female
 Glow-Wire Compliant No
 Material - Resin Polyester Alloy
 Number of Rows 1
 Packaging Type Bag
 Panel Mount No
 Pitch - Mating Interface (in) 0.339 In
 Pitch - Mating Interface (mm) 8.60 mm
 Stackable No
 Temperature Range - Operating -40°C to +105°C

Material Info

Reference - Drawing Numbers

Product Specification PS-68416-001
 Sales Drawing SD-68416-001

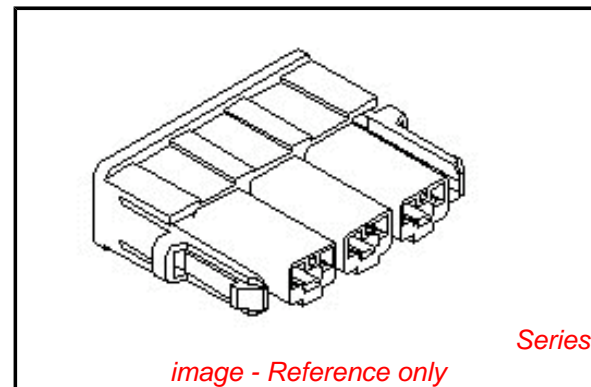


image - Reference only

EU RoHS

**ELV and RoHS
 Compliant**
REACH SVHC
 Not Reviewed
**Halogen-Free
 Status**
Not Reviewed

China RoHS



**Need more information on product
 environmental compliance?**

Email productcompliance@molex.com
 For a multiple part number RoHS Certificate of
 Compliance, [click here](#)

Please visit the [Contact Us](#) section for any
 non-product compliance questions.

Search Parts in this Series

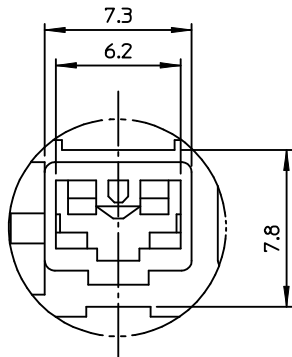
[68416Series](#)

Mates With

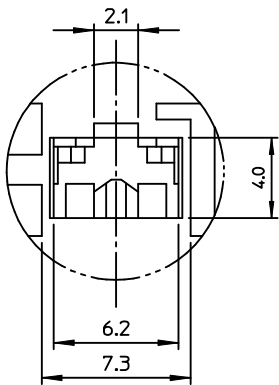
[Appliance Motor](#)

Use With

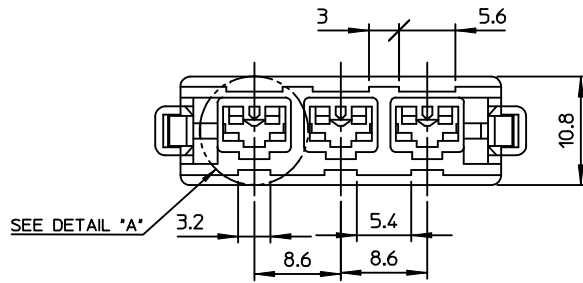
[35068 Female Terminal](#)



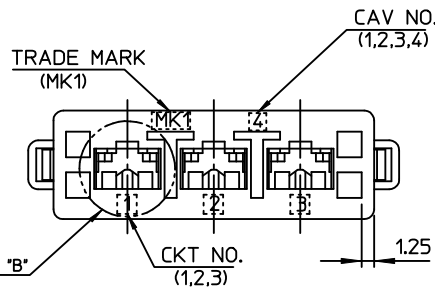
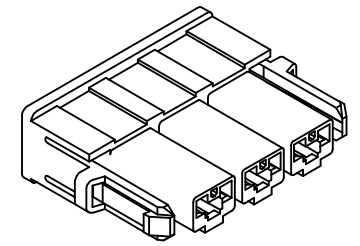
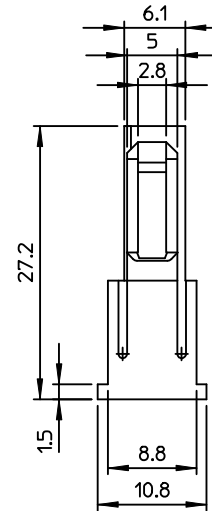
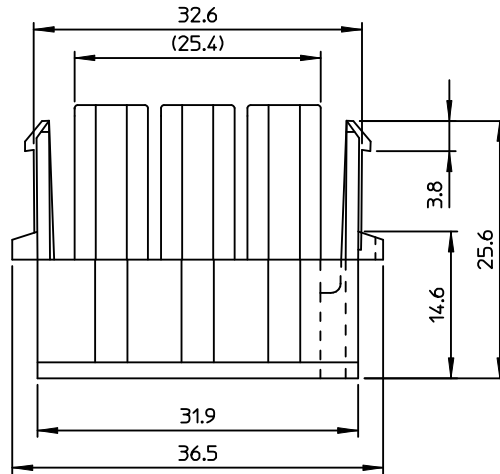
DETAIL "A"
(S=4:1)



DETAIL "B"
(S=4:1)



SEE DETAIL "A"



TRADE MARK
(MK1)

CAV NO.
(1,2,3,4)

CKT NO.
(1,2,3)

MATERIAL NO.	ENG NO.	MATERIAL
684160300	68416-0300	PC/PET UL94V-0
684160350	68416-0350	NYLON66/6, UL94V-0

SEE TABLE 1

- NOTES.
1. MATERIAL : SEE TABLE.1
 2. PRODUCT SPECIFICATION : PS-68416-001
 3. PACKING SPECIFICATION : PK-68416-001
 4. APPLICABLE TERMINAL : 35068-9702/9802/9902

REVISED		QUALITY SYMBOLS		GENERAL TOLERANCES (UNLESS SPECIFIED)		DIMENSION STYLE		SCALE		DESIGN UNITS		THIRD ANGLE PROJECTION	
EC NO.	DATE	DESCRIPTION	SYMBOL	mm	INCH	MM ONLY	DATE	4:1	METRIC	TITLE			
KOR2009-0159	2009/06/09		$\nabla=0$				2001/11/02			.187 DRUM MOTOR CONN HOUSING-3P			
JHPARK01	2009/06/10		$\nabla=0$	4 PLACES	± ---	± ---	WY.YANG			MOLEX INCORPORATED			
CHKD:WY YANG	2009/06/10			3 PLACES	± ---	± ---	BK.CHOI			DOCUMENT NO. SD-68416-001			
APPR:YUNSIKKIM	2009/06/10			2 PLACES	± 0.30	± ---	CW.LEE			SHEET NO. 1 OF 01			
				1 PLACE	± 0.30	± ---				THIS DRAWING CONTAINS INFORMATION THAT IS PROPRIETARY TO MOLEX INCORPORATED AND SHOULD NOT BE USED WITHOUT WRITTEN PERMISSION			
				ANGULAR ± 1 °									
				DRAFT WHERE APPLICABLE MUST REMAIN WITHIN DIMENSIONS									