

PLEASE CHECK WWW.MOLEX.COM FOR LATEST PART INFORMATION

Part Number: [0416610022](#)
Status: **Active**
Description: 3.96mm (.156") Pitch KK® Header, Breakaway, Vertical, 23 Circuits, 0.38µm (15µ") Gold (Au) Selective Plating, Pin length 19.00mm (.750")

Documents:

[3D Model](#) [Product Specification PS-08-50 \(PDF\)](#)
[Drawing \(PDF\)](#) [RoHS Certificate of Compliance \(PDF\)](#)

Agency Certification

CSA LR19980
 UL E29179

General

Product Family PCB Headers
 Series [41661](#)
 Application Board-to-Board, Wire-to-Board
 Product Name KK®

Physical

Breakaway Yes
 Circuits (Loaded) 23
 Circuits (maximum) 23
 Circuits Detail 23
 Color - Resin Black
 Durability (mating cycles max) 25
 First Mate / Last Break No
 Flammability 94V-0
 Glow-Wire Compliant No
 Guide to Mating Part No
 Keying to Mating Part None
 Lock to Mating Part None
 Material - Metal Brass
 Material - Plating Mating Gold
 Material - Plating Termination Gold
 Material - Resin Polyester
 Number of Rows 1
 Orientation Vertical
 PC Tail Length (in) 0.172 In
 PC Tail Length (mm) 4.37 mm
 PCB Locator No
 PCB Retention None
 PCB Thickness Recommended (in) 0.062 In
 PCB Thickness Recommended (mm) 1.57 mm
 Packaging Type Bag
 Pitch - Mating Interface (in) 0.156 In
 Pitch - Mating Interface (mm) 3.96 mm
 Pitch - Term. Interface (in) 0.156 In
 Pitch - Term. Interface (mm) 3.96 mm
 Polarized to Mating Part No
 Polarized to PCB No
 Shrouded No
 Stackable Yes
 Surface Mount Compatible (SMC) No
 Temperature Range - Operating 0°C to +50°C
 Termination Interface: Style Through Hole

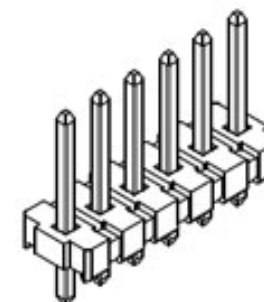


image - Reference only

Series

EU RoHS

ELV and RoHS Compliant
REACH SVHC Contains SVHC: No
Halogen-Free Status
Not Reviewed

China RoHS



Need more information on product environmental compliance?

Email productcompliance@molex.com
 For a multiple part number RoHS Certificate of Compliance, [click here](#)

Please visit the [Contact Us](#) section for any non-product compliance questions.

Search Parts in this Series

[41661Series](#)

Mates With

[2139](#) KK® Crimp Housing, [41695](#) KK® Crimp Housing, [6442](#) KK® Crimp Housing, [7674](#) KK® Crimp Housing, [7675](#) KK® IDT Solder Connectors, [2145](#) PCB Connector, [41815](#) PCB Connector

Electrical

| | |
|-------------------------------|------|
| Current - Maximum per Contact | 4.5A |
| Voltage - Maximum | 250V |

Solder Process Data

| | |
|--|------------------------|
| Duration at Max. Process Temperature (seconds) | 5 |
| Lead-free Process Capability | Wave Capable (TH only) |
| Max. Cycles at Max. Process Temperature | 1 |
| Process Temperature max. C | 235 |

Material Info

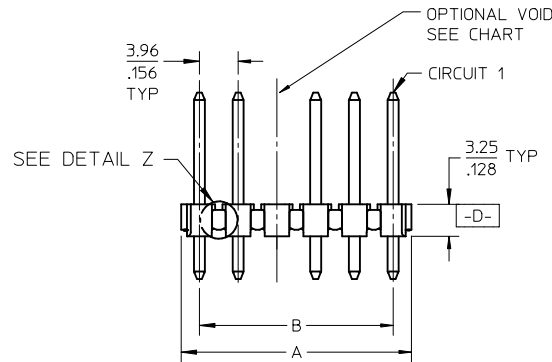
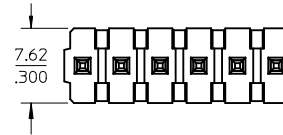
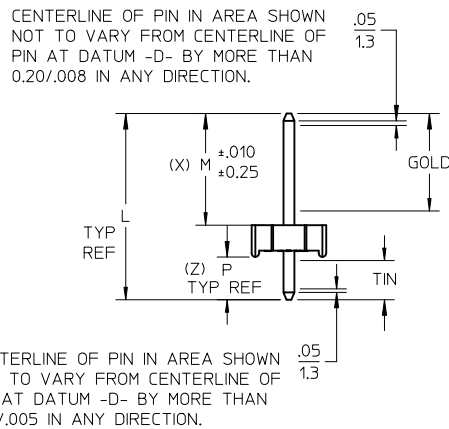
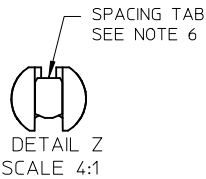
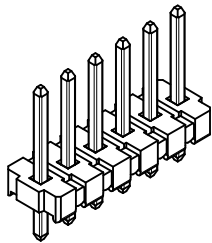
| | |
|-----------------|-----------------|
| Old Part Number | A-41661-B23A208 |
|-----------------|-----------------|

Reference - Drawing Numbers

| | |
|-----------------------|--------------|
| Product Specification | PS-08-50 |
| Sales Drawing | SD-41661-001 |

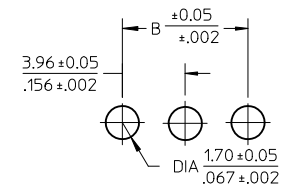
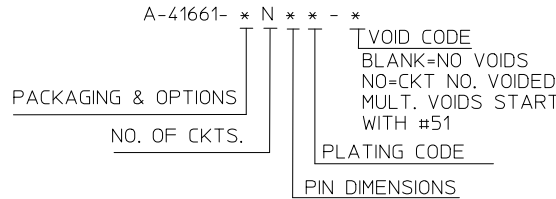
This document was generated on 04/19/2010

PLEASE CHECK WWW.MOLEX.COM FOR LATEST PART INFORMATION



| | B | A | CKT SIZE |
|--|------------|---------------------------|----------|
| | 3.96/156 | 6.78-7.87 / .267-.310 | 2 |
| | 7.92/312 | 10.74-11.84 / .423-.466 | 3 |
| | 11.89/468 | 14.71-15.80 / .579-.622 | 4 |
| | 15.85/624 | 18.67-19.76 / .735-.778 | 5 |
| | 19.81/780 | 22.63-23.72 / .891-.934 | 6 |
| | 23.77/936 | 26.59-27.69 / 1.047-1.090 | 7 |
| | 27.74/1092 | 30.56-31.65 / 1.203-1.246 | 8 |
| | 31.70/1248 | 34.52-35.61 / 1.359-1.402 | 9 |
| | 35.66/1404 | 38.48-39.57 / 1.515-1.558 | 10 |
| | 39.62/1560 | 42.44-43.54 / 1.671-1.714 | 11 |
| | 43.59/1716 | 46.41-47.50 / 1.827-1.870 | 12 |
| | 47.55/1872 | 50.37-51.46 / 1.983-2.026 | 13 |
| | 51.51/2028 | 54.33-55.42 / 2.139-2.182 | 14 |
| | 55.47/2184 | 58.29-59.39 / 2.295-2.338 | 15 |
| | 59.44/2340 | 62.26-63.35 / 2.451-2.494 | 16 |
| | 63.40/2496 | 66.22-67.31 / 2.607-2.650 | 17 |
| | 67.36/2652 | 70.18-71.27 / 2.763-2.806 | 18 |
| | 71.32/2808 | 74.14-75.23 / 2.919-2.962 | 19 |
| | 75.29/2964 | 78.11-79.20 / 3.075-3.118 | 20 |
| | 79.25/3120 | 82.07-83.16 / 3.231-3.274 | 21 |
| | 83.21/3276 | 86.03-87.12 / 3.387-3.430 | 22 |
| | 87.17/3432 | 89.94-91.08 / 3.541-3.586 | 23 |
| | 91.14/3588 | 93.85-95.00 / 3.695-3.740 | 24 |

- NOTES:
- MATERIAL: HEADER: GLASS FILLED POLYESTER, 94V-0, MOLDED BLACK.
 - FINISH:
 - (102) OVERALL TIN: 0.00508/0.00200 MIN OVER COPPER
 - (222) OVERALL MATTE TIN: 0.00254/0.00100 MIN OVER 0.00127/0.00050 MIN NICKEL
 - (208) SELECT GOLD: 0.00038/0.00015 MIN, SELECT TIN: 0.00254/0.00100 MIN, OVERALL NICKEL UNDERPLATE: 0.00127/0.00050 MIN.
 - (228) SELECT GOLD: 0.00076/0.00030 MIN, SELECT TIN: 0.00254/0.00100 MIN, OVERALL NICKEL UNDERPLATE: 0.00127/0.00050 MIN.
 - (501) OVERALL GOLD: 0.00051/0.00020 MIN OVER 0.00076/0.00030 MIN NICKEL
 - THIS PART CONFORMS TO PRODUCT SPEC PS-08-50.
 - PACKAGING: SEE CHARTS.
 - SOLDERABILITY: SEE SMES 152.
 - PARTS ARE STACKABLE END TO END ON 3.96/156 CENTERS. (SPACING TABS MUST BE REMOVED ON CIRCUIT SIZES 2 THRU 23 BEFORE PARTS ARE STACKABLE.)
 - THIS PART CONFORMS TO CLASS B REQUIREMENTS OF COSMETIC SPECIFICATION PS-45499-002.
 - PIN PUSH-OUT FORCE: PRIOR TO SOLDERING, A 3 LB MINIMUM FORCE (IN EITHER DIRECTION) SHALL BE REQUIRED TO PUSH THE PIN OUT OF THE HEADER.



PCB LAYOUT: COMPONENT SIDE
RECOMMENDED PCB THICKNESS:
1.57 ± .18 / .062 ± .007

| DRAWING FORMAT | SHEETS | REV LEVEL |
|----------------|--------|-----------|
| GENERAL DOCS. | 2-* | BD1 |
| ANNOTATOR | 1 | |

| | | | | | | |
|--|---|---|---------------------------|-------------------------------------|---|---|
| ADD 41661-0642 EC NO: UCP2010-1384 DRW/CHK/PPR 2010/02/03 CHKD:SSOUSEK 2010/02/09 APPR:FSMLTH 2010/02/10 | QUALITY SYMBOLS ▽E=0 ▽E=0 ▽E=0 | GENERAL TOLERANCES (UNLESS SPECIFIED) mm INCH 4 PLACES ± --- ± --- 3 PLACES ± --- ± .010 2 PLACES ± 0.25 ± .014 1 PLACE ± 0.36 ± --- ANGULAR ± 1/2° | DIMENSION STYLE MM/IN | SCALE 2:1 | DESIGN UNITS INCH | THIRD ANGLE PROJECTION |
| | | | | DRAWN BY JSCHAFFER | DATE 2004/03/04 | TITLE KK .156 HEADER ASSEMBLY FLAT BREAKAWAY 2-24 CKTS |
| BD1 | REV | DRAFT WHERE APPLICABLE MUST REMAIN WITHIN DIMENSIONS | MATERIAL NO. SEE CHART | MATERIAL NO. MARGULIS 2004/03/04 | | MATERIAL NO. SD-41661-001 |
| | | | | SIZE B | THIS DRAWING CONTAINS INFORMATION THAT IS PROPRIETARY TO MOLEX INCORPORATED AND SHOULD NOT BE USED WITHOUT WRITTEN PERMISSION | |

| | | | | | | | | | | | | | | |
|------------------|--------------|-------|------------------|-------------|-------|------------------|-------------|--------------|------------------|-------------|------------|--------------|--|--|
| PIN NUMBER | 2161-1(102) | | PIN NUMBER | CONTINUED | | | PIN NUMBER | 43294-0236 | | | PIN NUMBER | 43294-0237 | | |
| PIN LENGTH | 19.0/.750 | | PIN LENGTH | | | | PIN LENGTH | 19.0/.750 | | | PIN LENGTH | 19.0/.750 | | |
| PLATING | 102 | | PLATING | FROM | | | PLATING | 208 | | | PLATING | 228 | | |
| MATING "M" | 11.43/.450 | | MATING "M" | | | | MATING "M" | 11.43/.450 | | | MATING "M" | 11.43/.450 | | |
| PCB "P" | 4.37/.172 | | PCB "P" | LAST | | | PCB "P" | 4.37/.172 | | | PCB "P" | 4.37/.172 | | |
| GOLD "G" | N/A | | GOLD "G" | | | | GOLD "G" | 6.86 / .270 | | | GOLD "G" | 6.86/.270 | | |
| TIN "T" | OVERALL | | TIN "T" | COLUMN | | | TIN "T" | 4.06/.160 | | | TIN "T" | 4.06/.160 | | |
| PACKAGING | PK-41661-001 | | PACKAGING | | | | PACKAGING | PK-41661-001 | | | PACKAGING | PK-41661-001 | | |
| STATUS | | | STATUS | | | | STATUS | | | | STATUS | | | |
| A-41661-ANA102-* | | | A-41661-ANA102-* | | | A-41661-BNA208-* | | | A-41661-BNA228-* | | | | | |
| MATERIAL | ENGINEERING | VOIDS | MATERIAL | ENGINEERING | VOIDS | MATERIAL | ENGINEERING | VOIDS | MATERIAL | ENGINEERING | VOIDS | | | |
| 26-48-1021 | -A2A102 | | 26-50-3092 | -A9A102-7 | 7 | 41661-0001 | -B02A208 | | 41661-0024 | -B02A228 | | | | |
| 26-48-1031 | -A3A102 | | 26-50-3201 | -A20A102-3 | 3 | 41661-0002 | -B03A208 | | 41661-0025 | -B03A228 | | | | |
| 26-48-1041 | -A4A102 | | 26-50-3164 | -A16A102-52 | 2, 15 | 41661-0003 | -B04A208 | | 41661-0026 | -B04A228 | | | | |
| 26-48-1051 | -A5A102 | | 41661-2004 | -A6A102-4 | 4 | 41661-0004 | -B05A208 | | 41661-0027 | -B05A228 | | | | |
| 26-48-1061 | -A6A102 | | 41661-2005 | -A4A102-51 | 2,3 | 41661-0005 | -B06A208 | | 41661-0028 | -B06A228 | | | | |
| 26-48-1071 | -A7A102 | | 41661-2006 | -A5A102-3 | 3 | 41661-0006 | -B07A208 | | 41661-0029 | -B07A228 | | | | |
| 26-48-1081 | -A8A102 | | 26-50-3039 | -A3A102-2 | 2 | 41661-0007 | -B08A208 | | 41661-0030 | -B08A228 | | | | |
| 26-48-1091 | -A9A102 | | 26-50-3049 | -A4A102-2 | 2 | 41661-0008 | -B09A208 | | 41661-0031 | -B09A228 | | | | |
| 26-48-1101 | -A10A102 | | 26-50-3059 | -A5A102-2 | 2 | 41661-0009 | -B10A208 | | 41661-0032 | -B10A228 | | | | |
| 26-48-1111 | -A11A102 | | 26-50-3069 | -A6A102-2 | 2 | 41661-0010 | -B11A208 | | 41661-0033 | -B11A228 | | | | |
| 26-48-1121 | -A12A102 | | 26-50-3074 | -A7A102-2 | 2 | 41661-0011 | -B12A208 | | 41661-0034 | -B12A228 | | | | |
| 26-48-1131 | -A13A102 | | 26-50-3089 | -A8A102-2 | 2 | 41661-0012 | -B13A208 | | 41661-0035 | -B13A228 | | | | |
| 26-48-1141 | -A14A102 | | 26-50-3099 | -A9A102-2 | 2 | 41661-0013 | -B14A208 | | 41661-0036 | -B14A228 | | | | |
| 26-48-1151 | -A15A102 | | 26-50-3104 | -A10A102-2 | 2 | 41661-0014 | -B15A208 | | 41661-0037 | -B15A228 | | | | |
| 26-48-1161 | -A16A102 | | 26-50-3119 | -A11A102-2 | 2 | 41661-0015 | -B16A208 | | 41661-0038 | -B16A228 | | | | |
| 26-48-1171 | -A17A102 | | 26-50-3129 | -A12A102-2 | 2 | 41661-0016 | -B17A208 | | 41661-0039 | -B17A228 | | | | |
| 26-48-1181 | -A18A102 | | 26-50-3139 | -A13A102-2 | 2 | 41661-0017 | -B18A208 | | 41661-0040 | -B18A228 | | | | |
| 26-48-1191 | -A19A102 | | 26-50-3149 | -A14A102-2 | 2 | 41661-0018 | -B19A208 | | 41661-0041 | -B19A228 | | | | |
| 26-48-1201 | -A20A102 | | 26-50-3159 | -A15A102-2 | 2 | 41661-0019 | -B20A208 | | 41661-0042 | -B20A228 | | | | |
| 26-48-1211 | -A21A102 | | 26-50-3169 | -A16A102-2 | 2 | 41661-0020 | -B21A208 | | 41661-0043 | -B21A228 | | | | |
| 26-48-1221 | -A22A102 | | 26-50-3179 | -A17A102-2 | 2 | 41661-0021 | -B22A208 | | 41661-0044 | -B22A228 | | | | |
| 26-48-1231 | -A23A102 | | 26-50-3189 | -A18A102-2 | 2 | 41661-0022 | -B23A208 | | 41661-0045 | -B23A228 | | | | |
| 26-48-1241 | -A24A102 | | 26-50-3199 | -A19A102-2 | 2 | 41661-0023 | -B24A208 | | 41661-0046 | -B24A228 | | | | |
| 26-48-1178 | -A17A102-3 | 3 | 26-50-3209 | -A20A102-2 | 2 | | | | | | | | | |
| 26-48-1138 | -A13A102-3 | 3 | 50-29-1687 | -A07A102-4 | 4 | | | | | | | | | |
| 26-50-3105 | -A10A102-4 | 4 | 50-29-1612 | -A15A102-7 | 7 | | | | | | | | | |

| | | | |
|---|---|--|-------------------------------|
| REV: BD1 | ECR/ECN INFORMATION: EC No.: UCP2010-1384 DATE: 2/10/2010 | TITLE: KK 156 HEADER ASSEMBLY FLAT BREAKAWAY 2-24 CKTS | SHEET No. - 2 - |
| DOCUMENT NUMBER: SD- 41661 -001 | | CREATED / REVISED BY: MKIPPER | CHECKED BY: SSOUSEK |
| | | APPROVED BY: FSMITH | |

| | | | | | | | | | | | |
|-------------------|--------------|------------|------------------|-------------|--------------|------------------|--------------|-------|------------------|-------------|-------|
| PIN NUMBER | 2161-65(102) | PIN NUMBER | 2161-3(102) | PIN NUMBER | 2161-16(501) | PIN NUMBER | 2161-36(102) | | | | |
| PIN LENGTH | 22.71/.894 | PIN LENGTH | 23.80/.937 | PIN LENGTH | 25.40/1.000 | PIN LENGTH | 30.48/1.200 | | | | |
| PLATING | 102 | PLATING | 102 | PLATING | 501 | PLATING | 102 | | | | |
| MATING "M" | 15.09/.594 | MATING "M" | 16.18/.637 | MATING "M" | 18.26/.719 | MATING "M" | 24.21/.953 | | | | |
| PCB "P" | 4.37/.172 | PCB "P" | 4.37/.172 | PCB "P" | 3.89/.153 | PCB "P" | 3.02/.119 | | | | |
| GOLD "G" | N/A | GOLD "G" | N/A | GOLD "G" | OVERALL | GOLD "G" | N/A | | | | |
| TIN "T" | OVERALL | TIN "T" | OVERALL | TIN "T" | N/A | TIN "T" | OVERALL | | | | |
| PACKAGING | PK-41661-001 | PACKAGING | PK-41661-001 | PACKAGING | PK-41661-001 | PACKAGING | PK-41661-001 | | | | |
| STATUS | | STATUS | | STATUS | | STATUS | | | | | |
| A-41661-ANAE102-* | | | A-41661-ANC102-* | | | A-41661-AND501-* | | | A-41661-ANE102-* | | |
| MATERIAL | ENGINEERING | VOIDS | MATERIAL | ENGINEERING | VOIDS | MATERIAL | ENGINEERING | VOIDS | MATERIAL | ENGINEERING | VOIDS |
| 26-48-1020 | -A2AE102 | | 26-48-7021 | -A2C102 | | 26-48-5023 | -A2D501 | | 26-58-4020 | -A2E102 | |
| 26-48-1030 | -A3AE102 | | 26-48-7031 | -A3C102 | | 41661-0093 | -A3D501 | | 26-58-4030 | -A3E102 | |
| 26-48-1040 | -A4AE102 | | 26-48-7041 | -A4C102 | | 41661-0094 | -A4D501 | | 26-58-4040 | -A4E102 | |
| 26-48-1050 | -A5AE102 | | 26-48-7051 | -A5C102 | | 41661-0095 | -A5D501 | | 26-58-4050 | -A5E102 | |
| 26-48-1060 | -A6AE102 | | 26-48-7061 | -A6C102 | | 41661-0096 | -A6D501 | | 26-58-4060 | -A6E102 | |
| 26-48-1070 | -A7AE102 | | 26-48-7071 | -A7C102 | | 41661-0097 | -A7D501 | | 26-58-4070 | -A7E102 | |
| 26-48-1080 | -A8AE102 | | 26-48-7081 | -A8C102 | | 26-48-5083 | -A8D501 | | 26-58-4080 | -A8E102 | |
| 26-48-1090 | -A9AE102 | | 26-48-7091 | -A9C102 | | 41661-0098 | -A9D501 | | 26-58-4090 | -A9E102 | |
| 26-48-1100 | -A10AE102 | | 26-48-7101 | -A10C102 | | 41661-0099 | -A10D501 | | 26-58-4100 | -A10E102 | |
| 26-48-1110 | -A11AE102 | | 26-48-7111 | -A11C102 | | 41661-0100 | -A11D501 | | 26-58-4110 | -A11E102 | |
| 26-48-1120 | -A12AE102 | | 26-48-7121 | -A12C102 | | 26-48-5123 | -A12D501 | | 26-58-4120 | -A12E102 | |
| 26-48-1130 | -A13AE102 | | 26-48-7131 | -A13C102 | | 41661-0101 | -A13D501 | | 26-58-4130 | -A13E102 | |
| 26-48-1140 | -A14AE102 | | 26-48-7141 | -A14C102 | | 41661-0102 | -A14D501 | | 26-58-4140 | -A14E102 | |
| 26-48-1150 | -A15AE102 | | 26-48-7151 | -A15C102 | | 41661-0103 | -A15D501 | | 26-58-4150 | -A15E102 | |
| 26-48-1160 | -A16AE102 | | 26-48-7161 | -A16C102 | | 41661-0104 | -A16D501 | | 26-58-4160 | -A16E102 | |
| 26-48-1170 | -A17AE102 | | 26-48-7171 | -A17C102 | | 41661-0105 | -A17D501 | | 26-58-4170 | -A17E102 | |
| 26-48-1180 | -A18AE102 | | 26-48-7181 | -A18C102 | | 41661-0106 | -A18D501 | | 26-58-4180 | -A18E102 | |
| 26-48-1190 | -A19AE102 | | 26-48-7191 | -A19C102 | | 41661-0107 | -A19D501 | | 26-58-4190 | -A19E102 | |
| 26-48-1200 | -A20AE102 | | 26-48-7201 | -A20C102 | | 41661-0108 | -A20D501 | | 26-58-4200 | -A20E102 | |
| 26-48-1210 | -A21AE102 | | 26-48-7211 | -A21C102 | | 41661-0109 | -A21D501 | | 26-58-4210 | -A21E102 | |
| 26-48-1220 | -A22AE102 | | 26-48-7221 | -A22C102 | | 41661-0110 | -A22D501 | | 26-58-4220 | -A22E102 | |
| 26-48-1230 | -A23AE102 | | 26-48-7231 | -A23C102 | | 41661-0111 | -A23D501 | | 26-58-4230 | -A23E102 | |
| 26-48-1240 | -A24AE102 | | 26-48-7241 | -A24C102 | | 41661-0112 | -A24D501 | | 26-58-4240 | -A24E102 | |

| | | | |
|---|---|--|-------------------------------|
| REV: BD1 | ECR/ECN INFORMATION: EC No.: UCP2010-1384 DATE: 2/10/2010 | TITLE: KK 156 HEADER ASSEMBLY FLAT BREAKAWAY 2-24 CKTS | SHEET No. - 3 - |
| DOCUMENT NUMBER: SD- 41661 -001 | | CREATED / REVISED BY: MKIPPER | CHECKED BY: SSOUSEK |
| | | APPROVED BY: FSMITH | |

| | | | | | | | | | | | |
|------------------|--------------|------------|------------------|-------------|--------------|------------------|--------------|-------|------------------|-------------|-------|
| PIN NUMBER | 2161-21(102) | PIN NUMBER | 2161-36(501) | PIN NUMBER | 2161-95(102) | PIN NUMBER | 2161-7(102) | | | | |
| PIN LENGTH | 28.58/1.125 | PIN LENGTH | 30.48/1.200 | PIN LENGTH | 37.24/1.468 | PIN LENGTH | 34.67/1.562 | | | | |
| PLATING | 102 | PLATING | 501 | PLATING | 102 | PLATING | 102 | | | | |
| MATING "M" | 20.96/.825 | MATING "M" | 24.21/.953 | MATING "M" | 13.97/.550 | MATING "M" | 33.40/1.315 | | | | |
| PCB "P" | 4.37/.172 | PCB "P" | 3.02/.119 | PCB "P" | 20.07/.790 | PCB "P" | 3.10/.122 | | | | |
| GOLD "G" | N/A | GOLD "G" | OVERALL | GOLD "G" | N/A | GOLD "G" | N/A | | | | |
| TIN "T" | OVERALL | TIN "T" | N/A | TIN "T" | OVERALL | TIN "T" | OVERALL | | | | |
| PACKAGING | PK-41661-001 | PACKAGING | PK-41661-001 | PACKAGING | PK-41661-001 | PACKAGING | PK-41661-001 | | | | |
| STATUS | | STATUS | | STATUS | | STATUS | | | | | |
| A-41661-ANF102-* | | | A-41661-ANE501-* | | | A-41661-ANH102-* | | | A-41661-ANL102-* | | |
| MATERIAL | ENGINEERING | VOIDS | MATERIAL | ENGINEERING | VOIDS | MATERIAL | ENGINEERING | VOIDS | MATERIAL | ENGINEERING | VOIDS |
| 26-48-4021 | -A2F102 | | 41661-0127 | -A2E501 | | 41661-0146 | -A2H102 | | 26-48-9021 | -A2L102 | |
| 26-48-4031 | -A3F102 | | 41661-0128 | -A3E501 | | 41661-0147 | -A3H102 | | 26-48-9031 | -A3L102 | |
| 26-48-4041 | -A4F102 | | 41661-0129 | -A4E501 | | 41661-0148 | -A4H102 | | 41661-0167 | -A4L102 | |
| 41661-0113 | -A5F102 | | 41661-0130 | -A5E501 | | 41661-0149 | -A5H102 | | 26-48-9051 | -A5L102 | |
| 26-48-4061 | -A6F102 | | 41661-0131 | -A6E501 | | 26-48-8061 | -A6H102 | | 26-48-9061 | -A6L102 | |
| 41661-0114 | -A7F102 | | 41661-0132 | -A7E501 | | 41661-0150 | -A7H102 | | 26-48-9071 | -A7L102 | |
| 26-48-4081 | -A8F102 | | 26-48-3081 | -A8E501 | | 41661-0151 | -A8H102 | | 41661-0168 | -A8L102 | |
| 41661-0115 | -A9F102 | | 41661-0133 | -A9E501 | | 41661-0152 | -A9H102 | | 41661-0169 | -A9L102 | |
| 26-48-4101 | -A10F102 | | 41661-0134 | -A10E501 | | 41661-0153 | -A10H102 | | 41661-0170 | -A10L102 | |
| 26-48-4111 | -A11F102 | | 41661-0135 | -A11E501 | | 41661-0154 | -A11H102 | | 41661-0171 | -A11L102 | |
| 41661-0116 | -A12F102 | | 26-48-3121 | -A12E501 | | 41661-0155 | -A12H102 | | 41661-0172 | -A12L102 | |
| 41661-0117 | -A13F102 | | 26-48-3131 | -A13E501 | | 26-48-8131 | -A13H102 | | 41661-0173 | -A13L102 | |
| 41661-0118 | -A14F102 | | 41661-0136 | -A14E501 | | 41661-0156 | -A14H102 | | 41661-0174 | -A14L102 | |
| 26-48-4151 | -A15F102 | | 41661-0137 | -A15E501 | | 41661-0157 | -A15H102 | | 41661-0175 | -A15L102 | |
| 41661-0119 | -A16F102 | | 41661-0138 | -A16E501 | | 41661-0158 | -A16H102 | | 41661-0176 | -A16L102 | |
| 41661-0120 | -A17F102 | | 41661-0139 | -A17E501 | | 41661-0159 | -A17H102 | | 41661-0177 | -A17L102 | |
| 41661-0121 | -A18F102 | | 41661-0140 | -A18E501 | | 41661-0160 | -A18H102 | | 41661-0178 | -A18L102 | |
| 41661-0122 | -A19F102 | | 41661-0141 | -A19E501 | | 41661-0161 | -A19H102 | | 41661-0179 | -A19L102 | |
| 41661-0123 | -A20F102 | | 41661-0142 | -A20E501 | | 41661-0162 | -A20H102 | | 41661-0180 | -A20L102 | |
| 41661-0124 | -A21F102 | | 41661-0143 | -A21E501 | | 41661-0163 | -A21H102 | | 41661-0181 | -A21L102 | |
| 41661-0125 | -A22F102 | | 41661-0144 | -A22E501 | | 41661-0164 | -A22H102 | | 41661-0182 | -A22L102 | |
| 41661-0126 | -A23F102 | | 41661-0145 | -A23E501 | | 41661-0165 | -A23H102 | | 41661-0183 | -A23L102 | |
| 26-48-4241 | -A24F102 | | 26-48-3241 | -A24E501 | | 41661-0166 | -A24H102 | | 26-48-9241 | -A24L102 | |

| | | | |
|---|---|--|-------------------------------|
| REV: BD1 | ECR/ECN INFORMATION: EC No.: UCP2010-1384 DATE: 2/10/2010 | TITLE: KK 156 HEADER ASSEMBLY FLAT BREAKAWAY 2-24 CKTS | SHEET No. - 4 - |
| DOCUMENT NUMBER: SD- 41661 -001 | | CREATED / REVISED BY: MKIPPER | CHECKED BY: SSOUSEK |
| | | APPROVED BY: FSMITH | |

| | | | | | | | | | | | |
|------------------|--------------|------------|------------------|-------------|--------------|------------------|--------------|-------|----------------|-------------|-------|
| PIN NUMBER | 2161-36(102) | PIN NUMBER | 2161-7(102) | PIN NUMBER | 2161-36(102) | PIN NUMBER | 2161-3(501) | | | | |
| PIN LENGTH | 30.48/1.200 | PIN LENGTH | 39.67/1.562 | PIN LENGTH | 30.48/1.200 | PIN LENGTH | 23.80/937 | | | | |
| PLATING | 102 | PLATING | 102 | PLATING | 102 | PLATING | 501 | | | | |
| MATING "M" | 22.61/.890 | MATING "M" | 32.61/1.284 | MATING "M" | 13.44/.531 | MATING "M" | 16.18/.637 | | | | |
| PCB "P" | 4.62/.182 | PCB "P" | 3.81/.150 | PCB "P" | 13.74/.541 | PCB "P" | 4.37/.172 | | | | |
| GOLD "G" | N/A | GOLD "G" | N/A | GOLD "G" | N/A | GOLD "G" | OVERALL | | | | |
| TIN "T" | OVERALL | TIN "T" | OVERALL | TIN "T" | OVERALL | TIN "T" | N/A | | | | |
| PACKAGING | PK-41661-001 | PACKAGING | PK-41661-001 | PACKAGING | PK-41661-001 | PACKAGING | PK-41661-001 | | | | |
| STATUS | | STATUS | | STATUS | | STATUS | | | | | |
| A-41661-ANM102-* | | | A-41661-ANN102-* | | | A-41661-ANR102-* | | | 41661-ANC501-* | | |
| MATERIAL | ENGINEERING | VOIDS | MATERIAL | ENGINEERING | VOIDS | MATERIAL | ENGINEERING | VOIDS | MATERIAL | ENGINEERING | VOIDS |
| 26-58-4022 | -A2M102 | | 41661-0200 | -A2N102 | | 26-48-4022 | -A2R102 | | 41661-0219 | -A2C501 | |
| 41661-0184 | -A3M102 | | 41661-0201 | -A3N102 | | 26-48-4032 | -A3R102 | | 41661-0220 | -A3C501 | |
| 26-58-4042 | -A4M102 | | 41661-0202 | -A4N102 | | 26-48-4042 | -A4R102 | | 41661-0221 | -A4C501 | |
| 26-58-4052 | -A5M102 | | 41661-0203 | -A5N102 | | 26-48-4052 | -A5R102 | | 41661-0222 | -A5C501 | |
| 41661-0186 | -A6M102 | | 26-58-0062 | -A6N102 | | 26-48-4062 | -A6R102 | | 26-48-5064 | -A6C501 | |
| 26-58-4072 | -A7M102 | | 41661-0204 | -A7N102 | | 26-48-4072 | -A7R102 | | 41661-0223 | -A7C501 | |
| 41661-0187 | -A8M102 | | 41661-0205 | -A8N102 | | 26-48-4082 | -A8R102 | | 41661-0224 | -A8C501 | |
| 26-58-4092 | -A9M102 | | 26-58-0092 | -A9N102 | | 26-48-4092 | -A9R102 | | 41661-0225 | -A9C501 | |
| 26-58-4102 | -A10M102 | | 26-58-0102 | -A10N102 | | 26-48-4102 | -A10R102 | | 26-48-5104 | -A10C501 | |
| 41661-0188 | -A11M102 | | 41661-0206 | -A11N102 | | 26-48-4112 | -A11R102 | | 41661-0226 | -A11C501 | |
| 26-58-4122 | -A12M102 | | 41661-0207 | -A12N102 | | 26-48-4122 | -A12R102 | | 41661-0227 | -A12C501 | |
| 41661-0189 | -A13M102 | | 41661-0208 | -A13N102 | | 26-48-4132 | -A13R102 | | 41661-0228 | -A13C501 | |
| 41661-0190 | -A14M102 | | 41661-0209 | -A14N102 | | 26-48-4142 | -A14R102 | | 41661-0229 | -A14C501 | |
| 26-58-4152 | -A15M102 | | 41661-0210 | -A15N102 | | 26-48-4152 | -A15R102 | | 41661-0230 | -A15C501 | |
| 26-58-4162 | -A16M102 | | 41661-0211 | -A16N102 | | 26-48-4162 | -A16R102 | | 41661-0231 | -A16C501 | |
| 41661-0192 | -A17M102 | | 41661-0212 | -A17N102 | | 26-48-4172 | -A17R102 | | 41661-0232 | -A17C501 | |
| 41661-0193 | -A18M102 | | 41661-0213 | -A18N102 | | 26-48-4182 | -A18R102 | | 41661-0233 | -A18C501 | |
| 41661-0194 | -A19M102 | | 41661-0214 | -A19N102 | | 26-48-4192 | -A19R102 | | 41661-0234 | -A19C501 | |
| 41661-0195 | -A20M102 | | 41661-0215 | -A20N102 | | 26-48-4202 | -A20R102 | | 41661-0235 | -A20C501 | |
| 41661-0196 | -A21M102 | | 41661-0216 | -A21N102 | | 26-48-4212 | -A21R102 | | 41661-0236 | -A21C501 | |
| 41661-0197 | -A22M102 | | 41661-0217 | -A22N102 | | 26-48-4222 | -A22R102 | | 41661-0237 | -A22C501 | |
| 41661-0198 | -A23M102 | | 41661-0218 | -A23N102 | | 26-48-4232 | -A23R102 | | 41661-0238 | -A23C501 | |
| 41661-0199 | -A24M102 | | 26-58-0242 | -A24N102 | | 26-48-4242 | -A24R102 | | 26-48-5244 | -A24C501 | |
| | | | | | | 26-50-4055 | -A5R102-4 | 4 | | | |
| | | | | | | | | | | | |
| | | | | | | | | | | | |

| | | | |
|---|---|--|-------------------------------|
| REV: BD1 | ECR/ECN INFORMATION: EC No.: UCP2010-1384 DATE: 2/10/2010 | TITLE: KK 156 HEADER ASSEMBLY FLAT BREAKAWAY 2-24 CKTS | SHEET No. - 5 - |
| DOCUMENT NUMBER: SD- 41661 -001 | CREATED / REVISED BY: MKIPPER | CHECKED BY: SSOUSEK | APPROVED BY: FSMITH |

| | | | | | | | | | | | |
|------------------|--------------|------------|------------------|-------------|--------------|------------------|--------------|-------|-------------------|-------------|-------|
| PIN NUMBER | 2161-22(102) | PIN NUMBER | 2161-19(102) | PIN NUMBER | 2161-22(102) | PIN NUMBER | 2161-38(102) | | | | |
| PIN LENGTH | 31.75/1.250 | PIN LENGTH | 26.21/1.032 | PIN LENGTH | 31.75/1.250 | PIN LENGTH | 38.10/1.500 | | | | |
| PLATING | 102 | PLATING | 102 | PLATING | 102 | PLATING | 102 | | | | |
| MATING "M" | 25.70/1.012 | MATING "M" | 19.48/.767 | MATING "M" | 18.34/.722 | MATING "M" | 31.80/1.252 | | | | |
| PCB "P" | 2.79/.110 | PCB "P" | 3.56/.140 | PCB "P" | 10.16/.400 | PCB "P" | 3.05/.120 | | | | |
| GOLD "G" | N/A | GOLD "G" | N/A | GOLD "G" | N/A | GOLD "G" | N/A | | | | |
| TIN "T" | OVERALL | TIN "T" | OVERALL | TIN "T" | OVERALL | TIN "T" | OVERALL | | | | |
| PACKAGING | PK-41661-001 | PACKAGING | PK-41661-001 | PACKAGING | PK-41661-001 | PACKAGING | PK-41661-001 | | | | |
| STATUS | | STATUS | | STATUS | | STATUS | | | | | |
| A-41661-ANW102-* | | | A-41661-ANY102-* | | | A-41661-ANZ102-* | | | A-41661-ANAA102-* | | |
| MATERIAL | ENGINEERING | VOIDS | MATERIAL | ENGINEERING | VOIDS | MATERIAL | ENGINEERING | VOIDS | MATERIAL | ENGINEERING | VOIDS |
| 41661-0239 | -A2W102 | | 41661-0259 | -A2Y102 | | 41661-0274 | -A2Z102 | | 41661-0294 | -A2AA102 | |
| 41661-0240 | -A3W102 | | 26-58-0030 | -A3Y102 | | 41661-0275 | -A3Z102 | | 41661-0295 | -A3AA102 | |
| 26-58-0045 | -A4W102 | | 26-58-0040 | -A4Y102 | | 41661-0276 | -A4Z102 | | 41661-0296 | -A4AA102 | |
| 41661-0241 | -A5W102 | | 41661-0260 | -A5Y102 | | 41661-0277 | -A5Z102 | | 41661-0297 | -A5AA102 | |
| 41661-0242 | -A6W102 | | 26-58-0060 | -A6Y102 | | 26-58-0061 | -A6Z102 | | 41661-0298 | -A6AA102 | |
| 41661-0243 | -A7W102 | | 26-58-0070 | -A7Y102 | | 41661-0278 | -A7Z102 | | 41661-0299 | -A7AA102 | |
| 41661-0244 | -A8W102 | | 41661-0261 | -A8Y102 | | 41661-0279 | -A8Z102 | | 26-58-0083 | -A8AA102 | |
| 41661-0245 | -A9W102 | | 26-58-0090 | -A9Y102 | | 41661-0280 | -A9Z102 | | 41661-0300 | -A9AA102 | |
| 26-58-0105 | -A10W102 | | 26-58-0100 | -A10Y102 | | 41661-0281 | -A10Z102 | | 41661-0301 | -A10AA102 | |
| 41661-0246 | -A11W102 | | 26-58-0110 | -A11Y102 | | 41661-0282 | -A11Z102 | | 41661-0302 | -A11AA102 | |
| 41661-0247 | -A12W102 | | 41661-0262 | -A12Y102 | | 26-58-0121 | -A12Z102 | | 41661-0303 | -A12AA102 | |
| 41661-0248 | -A13W102 | | 41661-0263 | -A13Y102 | | 41661-0283 | -A13Z102 | | 41661-0304 | -A13AA102 | |
| 41661-0249 | -A14W102 | | 41661-0264 | -A14Y102 | | 41661-0284 | -A14Z102 | | 41661-0305 | -A14AA102 | |
| 41661-0250 | -A15W102 | | 41661-0265 | -A15Y102 | | 41661-0285 | -A15Z102 | | 41661-0306 | -A15AA102 | |
| 41661-0251 | -A16W102 | | 41661-0266 | -A16Y102 | | 41661-0286 | -A16Z102 | | 41661-0307 | -A16AA102 | |
| 41661-0252 | -A17W102 | | 41661-0267 | -A17Y102 | | 41661-0287 | -A17Z102 | | 26-58-0173 | -A17AA102 | |
| 41661-0253 | -A18W102 | | 41661-0268 | -A18Y102 | | 41661-0288 | -A18Z102 | | 41661-0308 | -A18AA102 | |
| 41661-0254 | -A19W102 | | 41661-0269 | -A19Y102 | | 41661-0289 | -A19Z102 | | 41661-0309 | -A19AA102 | |
| 41661-0255 | -A20W102 | | 41661-0270 | -A20Y102 | | 41661-0290 | -A20Z102 | | 41661-0310 | -A20AA102 | |
| 41661-0256 | -A21W102 | | 41661-0271 | -A21Y102 | | 41661-0291 | -A21Z102 | | 41661-0311 | -A21AA102 | |
| 41661-0257 | -A22W102 | | 41661-0272 | -A22Y102 | | 41661-0292 | -A22Z102 | | 41661-0312 | -A22AA102 | |
| 41661-0258 | -A23W102 | | 41661-0273 | -A23Y102 | | 41661-0293 | -A23Z102 | | 41661-0313 | -A23AA102 | |
| 26-58-0245 | -A24W102 | | 26-58-0240 | -A24Y102 | | 26-58-0241 | -A24Z102 | | 41661-0314 | -A24AA102 | |
| | | | | | | | | | | | |
| | | | | | | | | | | | |
| | | | | | | | | | | | |

| | | | |
|---|---|--|-------------------------------|
| REV: BD1 | ECR/ECN INFORMATION: EC No.: UCP2010-1384 DATE: 2/10/2010 | TITLE: KK 156 HEADER ASSEMBLY FLAT BREAKAWAY 2-24 CKTS | SHEET No. - 6 - |
| DOCUMENT NUMBER: SD- 41661 -001 | CREATED / REVISED BY: MKIPPER | CHECKED BY: SSOUSEK | APPROVED BY: FSMITH |

| | | | | | | | | | | | |
|------------------|--------------|------------|------------------|-------------|--------------|-------------------|------------------------|-------|------------------|-------------|-------|
| PIN NUMBER | 2161-45(102) | PIN NUMBER | 2161-45(501) | PIN NUMBER | 2161-40(102) | PIN NUMBER | 2161-21(501) | | | | |
| PIN LENGTH | 20.85/.821 | PIN LENGTH | 20.85/.821 | PIN LENGTH | 48.26/1.900 | PIN LENGTH | 28.58/1.125 | | | | |
| PLATING | 102 | PLATING | 501 | PLATING | 102 | PLATING | 501 | | | | |
| MATING "M" | 13.23/.521 | MATING "M" | 13.23/.501 | MATING "M" | 43.18/1.700 | MATING "M" | 22.53/.887 REF | | | | |
| PCB "P" | 4.37/.172 | PCB "P" | 4.37/.172 | PCB "P" | 1.83/.072 | PCB "P" | 2.79+- .51/.110+- .020 | | | | |
| GOLD "G" | N/A | GOLD "G" | OVERALL | GOLD "G" | N/A | GOLD "G" | OVERALL | | | | |
| TIN "T" | OVERALL | TIN "T" | N/A | TIN "T" | OVERALL | TIN "T" | N/A | | | | |
| PACKAGING | PK-41661-001 | PACKAGING | PK-41661-001 | PACKAGING | PK-41661-001 | PACKAGING | PK-41661-001 | | | | |
| STATUS | | STATUS | | STATUS | | STATUS | | | | | |
| A-41661-ANB102-* | | | A-41661-ANB501-* | | | A-41661-ANAW102-* | | | A-41661-ANV501-* | | |
| MATERIAL | ENGINEERING | VOIDS | MATERIAL | ENGINEERING | VOIDS | MATERIAL | ENGINEERING | VOIDS | MATERIAL | ENGINEERING | VOIDS |
| 26-48-6021 | -A2B102 | | 26-48-5021 | -A2B501 | | 26-58-5024 | -A2AW102 | | 41661-0315 | -A2V501 | |
| 26-48-6031 | -A3B102 | | 26-48-5031 | -A3B501 | | 26-58-5034 | -A3AW102 | | 41661-0316 | -A3V501 | |
| 26-48-6041 | -A4B102 | | 26-48-5041 | -A4B501 | | 26-58-5044 | -A4AW102 | | 41661-0317 | -A4V501 | |
| 26-48-6051 | -A5B102 | | 26-48-5051 | -A5B501 | | 26-58-5054 | -A5AW102 | | 41661-0318 | -A5V501 | |
| 26-48-6061 | -A6B102 | | 26-48-5061 | -A6B501 | | 26-58-5064 | -A6AW102 | | 26-48-5068 | -A6V501 | |
| 26-48-6071 | -A7B102 | | 26-48-5071 | -A7B501 | | 26-58-5074 | -A7AW102 | | 41661-0319 | -A7V501 | |
| 26-48-6081 | -A8B102 | | 26-48-5081 | -A8B501 | | 26-58-5084 | -A8AW102 | | 26-48-5088 | -A8V501 | |
| 26-48-6091 | -A9B102 | | 26-48-5091 | -A9B501 | | 26-58-5094 | -A9AW102 | | 41661-0320 | -A9V501 | |
| 26-48-6101 | -A10B102 | | 26-48-5101 | -A10B501 | | 26-58-5104 | -A10AW102 | | 41661-0321 | -A10V501 | |
| 26-48-6111 | -A11B102 | | 26-48-5111 | -A11B501 | | 26-58-5114 | -A11AW102 | | 41661-0322 | -A11V501 | |
| 26-48-6121 | -A12B102 | | 26-48-5121 | -A12B501 | | 26-58-5124 | -A12AW102 | | 41661-0323 | -A12V501 | |
| 26-48-6131 | -A13B102 | | 26-48-5131 | -A13B501 | | 26-58-5134 | -A13AW102 | | 41661-0324 | -A13V501 | |
| 26-48-6141 | -A14B102 | | 26-48-5141 | -A14B501 | | 26-58-5144 | -A14AW102 | | 41661-0325 | -A14V501 | |
| 26-48-6151 | -A15B102 | | 26-48-5151 | -A15B501 | | 26-58-5154 | -A15AW102 | | 41661-0326 | -A15V501 | |
| 26-48-6161 | -A16B102 | | 26-48-5161 | -A16B501 | | 26-58-5164 | -A16AW102 | | 41661-0327 | -A16V501 | |
| 26-48-6171 | -A17B102 | | 26-48-5171 | -A17B501 | | 26-58-5174 | -A17AW102 | | 41661-0328 | -A17V501 | |
| 26-48-6181 | -A18B102 | | 26-48-5181 | -A18B501 | | 26-58-5184 | -A18AW102 | | 41661-0329 | -A18V501 | |
| 26-48-6191 | -A19B102 | | 26-48-5191 | -A19B501 | | 26-58-5194 | -A19AW102 | | 41661-0330 | -A19V501 | |
| 26-48-6201 | -A20B102 | | 26-48-5201 | -A20B501 | | 26-58-5204 | -A20AW102 | | 41661-0331 | -A20V501 | |
| 26-48-6211 | -A21B102 | | 26-48-5211 | -A21B501 | | 26-58-5214 | -A21AW102 | | 41661-0332 | -A21V501 | |
| 26-48-6221 | -A22B102 | | 26-48-5221 | -A22B501 | | 26-58-5224 | -A22AW102 | | 41661-0333 | -A22V501 | |
| 26-48-6231 | -A23B102 | | 26-48-5231 | -A23B501 | | 26-58-5234 | -A23AW102 | | 41661-0334 | -A23V501 | |
| 26-48-6241 | -A24B102 | | 26-48-5241 | -A24B501 | | 26-58-5244 | -A24AW102 | | 41661-0335 | -A24V501 | |
| | | | | | | | | | | | |
| | | | | | | | | | | | |
| | | | | | | | | | | | |

| | | | |
|---|---|--|-------------------------------|
| REV: BD1 | ECR/ECN INFORMATION: EC No.: UCP2010-1384 DATE: 2/10/2010 | TITLE: KK 156 HEADER ASSEMBLY FLAT BREAKAWAY 2-24 CKTS | SHEET No. - 7 - |
| DOCUMENT NUMBER: SD- 41661 -001 | CREATED / REVISED BY: MKIPPER | CHECKED BY: SSOUSEK | APPROVED BY: FSMITH |

| | | | | | | | | | | | |
|------------------------|-------------|-------|-------------------------|-------------|-------|-------------------------|-------------|-------|-------------------------|-------------|-------|
| PIN NUMBER 2161-5(501) | | | PIN NUMBER 2161-16(102) | | | PIN NUMBER 2161-21(102) | | | PIN NUMBER 2161-15(102) | | |
| PIN LENGTH 34.93/1.375 | | | PIN LENGTH 25.40/1.000 | | | PIN LENGTH 28.57/1.125 | | | PIN LENGTH 15.88/625 | | |
| PLATING 501 | | | PLATING 102 | | | PLATING 102 | | | PLATING 102 | | |
| MATING "M" 27.18/1.070 | | | MATING "M" 18.26/719 | | | MATING "M" 22.15/872 | | | MATING "M" 8.81/347 | | |
| PCB "P" 4.50/177 | | | PCB "P" 3.89/153 | | | PCB "P" 3.18/125 | | | PCB "P" 3.81/150 | | |
| GOLD "G" OVERALL | | | GOLD "G" N/A | | | GOLD "G" N/A | | | GOLD "G" N/A | | |
| TIN "T" N/A | | | TIN "T" OVERALL | | | TIN "T" OVERALL | | | TIN "T" OVERALL | | |
| PACKAGING PK-41661-001 | | | PACKAGING PK-41661-001 | | | PACKAGING PK-41661-001 | | | PACKAGING PK-41661-001 | | |
| STATUS | | | STATUS | | | STATUS | | | STATUS | | |
| A-41661-ANAN501-* | | | A-41661-AND102-* | | | A-41661-ANBA102-* | | | A-41661-ANBC102-* | | |
| MATERIAL | ENGINEERING | VOIDS | MATERIAL | ENGINEERING | VOIDS | MATERIAL | ENGINEERING | VOIDS | MATERIAL | ENGINEERING | VOIDS |
| 26-58-4026 | -A2AN501 | | 41661-0336 | -A2D102 | | 26-48-4025 | -A2BA102 | | 26-48-3023 | -A2BC102 | |
| 26-58-4036 | -A3AN501 | | 41661-0337 | -A3D102 | | 26-48-4035 | -A3BA102 | | 26-48-3033 | -A3BC102 | |
| 26-58-4046 | -A4AN501 | | 41661-0338 | -A4D102 | | 26-48-4045 | -A4BA102 | | 26-48-3043 | -A4BC102 | |
| 26-58-4056 | -A5AN501 | | 26-48-9052 | -A5D102 | | 26-48-4055 | -A5BA102 | | 26-48-3053 | -A5BC102 | |
| 26-58-4066 | -A6AN501 | | 41661-0339 | -A6D102 | | 26-48-4065 | -A6BA102 | | 26-48-3063 | -A6BC102 | |
| 26-58-4076 | -A7AN501 | | 41661-0340 | -A7D102 | | 26-48-4075 | -A7BA102 | | 26-48-3073 | -A7BC102 | |
| 26-58-4086 | -A8AN501 | | 26-48-9082 | -A8D102 | | 26-48-4085 | -A8BA102 | | 26-48-3083 | -A8BC102 | |
| 26-58-4096 | -A9AN501 | | 41661-0341 | -A9D102 | | 26-48-4095 | -A9BA102 | | 26-48-3093 | -A9BC102 | |
| 26-58-4106 | -A10AN501 | | 41661-0342 | -A10D102 | | 26-48-4105 | -A10BA102 | | 26-48-3103 | -A10BC102 | |
| 26-58-4116 | -A11AN501 | | 41661-0343 | -A11D102 | | 26-48-4115 | -A11BA102 | | 26-48-3113 | -A11BC102 | |
| 26-58-4126 | -A12AN501 | | 41661-0344 | -A12D102 | | 26-48-4125 | -A12BA102 | | 26-48-3123 | -A12BC102 | |
| 26-58-4136 | -A13AN501 | | 41661-0345 | -A13D102 | | 26-48-4135 | -A13BA102 | | 26-48-3133 | -A13BC102 | |
| 26-58-4146 | -A14AN501 | | 41661-0346 | -A14D102 | | 26-48-4145 | -A14BA102 | | 26-48-3143 | -A14BC102 | |
| 26-58-4156 | -A15AN501 | | 41661-0347 | -A15D102 | | 26-48-4155 | -A15BA102 | | 26-48-3153 | -A15BC102 | |
| 26-58-4166 | -A16AN501 | | 41661-0348 | -A16D102 | | 26-48-4165 | -A16BA102 | | 26-48-3163 | -A16BC102 | |
| 26-58-4176 | -A17AN501 | | 41661-0349 | -A17D102 | | 26-48-4175 | -A17BA102 | | 26-48-3173 | -A17BC102 | |
| 26-58-4186 | -A18AN501 | | 41661-0350 | -A18D102 | | 26-48-4185 | -A18BA102 | | 26-48-3183 | -A18BC102 | |
| 26-58-4196 | -A19AN501 | | 41661-0351 | -A19D102 | | 26-48-4195 | -A19BA102 | | 26-48-3193 | -A19BC102 | |
| 26-58-4206 | -A20AN501 | | 41661-0352 | -A20D102 | | 26-48-4205 | -A20BA102 | | 26-48-3203 | -A20BC102 | |
| 26-58-4216 | -A21AN501 | | 41661-0353 | -A21D102 | | 26-48-4215 | -A21BA102 | | 26-48-3213 | -A21BC102 | |
| 26-58-4226 | -A22AN501 | | 41661-0354 | -A22D102 | | 26-48-4225 | -A22BA102 | | 26-48-3223 | -A22BC102 | |
| 26-58-4236 | -A23AN501 | | 41661-0355 | -A23D102 | | 26-48-4235 | -A23BA102 | | 26-48-3233 | -A23BC102 | |
| 26-58-4246 | -A24AN501 | | 26-48-9242 | -A24D102 | | 26-48-4245 | -A24BA102 | | 26-48-3243 | -A24BC102 | |
| | | | | | | | | | | | |
| | | | | | | | | | | | |
| | | | | | | | | | | | |

| | | | |
|---|---|--|-------------------------------|
| REV: BD1 | ECR/ECN INFORMATION: EC No.: UCP2010-1384 DATE: 2/10/2010 | TITLE: KK 156 HEADER ASSEMBLY FLAT BREAKAWAY 2-24 CKTS | SHEET No. - 8 - |
| DOCUMENT NUMBER: SD- 41661 -001 | | CREATED / REVISED BY: MKIPPER | CHECKED BY: SSOUSEK |
| | | APPROVED BY: FSMITH | |

| | | | | | | | | | | | |
|-------------------|--------------|------------|------------------|-------------|-----------|------------------|--------------|---------------------|-------------------|-------------|-------|
| PIN NUMBER | 2161-65(501) | PIN NUMBER | 2161-1(501) | PIN NUMBER | CONTINUED | PIN NUMBER | 2161-37(102) | | | | |
| PIN LENGTH | 22.71/.894 | PIN LENGTH | 19.05/.750 | PIN LENGTH | | PIN LENGTH | 27.94/1.100 | | | | |
| PLATING | 501 | PLATING | 501 | PLATING | FROM | PLATING | 102 | | | | |
| MATING "M" | 15.09/.594 | MATING "M" | 11.43/.450 | MATING "M" | | MATING "M" | 12.34/.486 | | | | |
| PCB "P" | 4.37/.172 | PCB "P" | 4.37/.172 | PCB "P" | LAST | PCB "P" | 12.34/.486 | | | | |
| GOLD "G" | OVERALL | GOLD "G" | OVERALL | GOLD "G" | | GOLD "G" | N/A | | | | |
| TIN "T" | N/A | TIN "T" | N/A | TIN "T" | COLUMN | TIN "T" | OVERALL | | | | |
| PACKAGING | PK-41661-001 | PACKAGING | PK-41661-001 | PACKAGING | | PACKAGING | PK-41661-001 | | | | |
| STATUS | | STATUS | | STATUS | | STATUS | | | | | |
| A-41661-ANAE501-* | | | A-41661-ANA501-* | | | A-41661-ANA501-* | | | A-41661-ANCC102-* | | |
| MATERIAL | ENGINEERING | VOIDS | MATERIAL | ENGINEERING | VOIDS | MATERIAL | ENGINEERING | VOIDS | MATERIAL | ENGINEERING | VOIDS |
| 26-48-2020 | -A2AE501 | | 26-48-2021 | -A2A501 | | 26-49-7171 | -A17A501-51 | 2,4,6,8,10,12,14,16 | 41661-0380 | -A2CC102 | |
| 26-48-2030 | -A3AE501 | | 26-48-2031 | -A3A501 | | | | | 41661-0381 | -A3CC102 | |
| 26-48-2040 | -A4AE501 | | 26-48-2041 | -A4A501 | | | | | 41661-0382 | -A4CC102 | |
| 26-48-2050 | -A5AE501 | | 26-48-2051 | -A5A501 | | | | | 41661-0383 | -A5CC102 | |
| 26-48-2060 | -A6AE501 | | 26-48-2061 | -A6A501 | | | | | 41661-0384 | -A6CC102 | |
| 26-48-2070 | -A7AE501 | | 26-48-2071 | -A7A501 | | | | | 41661-0385 | -A7CC102 | |
| 26-48-2080 | -A8AE501 | | 26-48-2081 | -A8A501 | | | | | 41661-0386 | -A8CC102 | |
| 26-48-2090 | -A9AE501 | | 26-48-2091 | -A9A501 | | | | | 41661-0387 | -A9CC102 | |
| 26-48-2100 | -A10AE501 | | 26-48-2101 | -A10A501 | | | | | 41661-0388 | -A10CC102 | |
| 26-48-2110 | -A11AE501 | | 26-48-2111 | -A11A501 | | | | | 41661-0389 | -A11CC102 | |
| 26-48-2120 | -A12AE501 | | 26-48-2121 | -A12A501 | | | | | 41661-0390 | -A12CC102 | |
| 26-48-2130 | -A13AE501 | | 26-48-2131 | -A13A501 | | | | | 41661-0391 | -A13CC102 | |
| 26-48-2140 | -A14AE501 | | 26-48-2141 | -A14A501 | | | | | 41661-0392 | -A14CC102 | |
| 26-48-2150 | -A15AE501 | | 26-48-2151 | -A15A501 | | | | | 41661-0393 | -A15CC102 | |
| 26-48-2160 | -A16AE501 | | 26-48-2161 | -A16A501 | | | | | 41661-0394 | -A16CC102 | |
| 26-48-2170 | -A17AE501 | | 26-48-2171 | -A17A501 | | | | | 41661-0395 | -A17CC102 | |
| 26-48-2180 | -A18AE501 | | 26-48-2181 | -A18A501 | | | | | 41661-0396 | -A18CC102 | |
| 26-48-2190 | -A19AE501 | | 26-48-2191 | -A19A501 | | | | | 41661-0397 | -A19CC102 | |
| 26-48-2200 | -A20AE501 | | 26-48-2201 | -A20A501 | | | | | 41661-0398 | -A20CC102 | |
| 26-48-2210 | -A21AE501 | | 26-48-2211 | -A21A501 | | | | | 41661-0399 | -A21CC102 | |
| 26-48-2220 | -A22AE501 | | 26-48-2221 | -A22A501 | | | | | 41661-0400 | -A22CC102 | |
| 26-48-2230 | -A23AE501 | | 26-48-2231 | -A23A501 | | | | | 41661-0401 | -A23CC102 | |
| 26-48-2240 | -A24AE501 | | 26-48-2241 | -A24A501 | | | | | 41661-0402 | -A24CC102 | |
| | | | | | | | | | | | |
| | | | | | | | | | | | |

| | | | |
|---|---|--|-------------------------------|
| REV: BD1 | ECR/ECN INFORMATION: EC No.: UCP2010-1384 DATE: 2/10/2010 | TITLE: KK 156 HEADER ASSEMBLY FLAT BREAKAWAY 2-24 CKTS | SHEET No. - 9 - |
| DOCUMENT NUMBER: SD- 41661 -001 | | CREATED / REVISED BY: MKIPPER | CHECKED BY: SSOUSEK |
| | | APPROVED BY: FSMITH | |

| | | | | | | | | | | | |
|-------------------|--------------|------------|-------------------|-------------|--------------|-------------------|--------------|-------|-------------------|-------------|-------|
| PIN NUMBER | 43294-0362 | PIN NUMBER | 43294-0363 | PIN NUMBER | 43294-0587 | PIN NUMBER | 43294-0317 | | | | |
| PIN LENGTH | 22.61/.890 | PIN LENGTH | 22.61/.890 | PIN LENGTH | 28.45/1.120 | PIN LENGTH | 21.34/.840 | | | | |
| PLATING | 208 | PLATING | 228 | PLATING | 208 | PLATING | 208 | | | | |
| MATING "M" | 15.09/.594 | MATING "M" | 15.09/.594 | MATING "M" | 22.15/.872 | MATING "M" | 13.97/.550 | | | | |
| PCB "P" | 4.27/.168 | PCB "P" | 4.27/.168 | PCB "P" | 3.05/.120 | PCB "P" | 4.11/.162 | | | | |
| GOLD "G" | 10.51/.415 | GOLD "G" | 10.51/.415 | GOLD "G" | 6.86/.270 | GOLD "G" | 8.89/.350 | | | | |
| TIN "T" | 4.06/.160 | TIN "T" | 4.06/.160 | TIN "T" | 5.08/.200 | TIN "T" | 5.08/.200 | | | | |
| PACKAGING | PK-41661-001 | PACKAGING | PK-41661-001 | PACKAGING | PK-41661-001 | PACKAGING | PK-41661-001 | | | | |
| STATUS | | STATUS | | STATUS | | STATUS | | | | | |
| A-41661-BNCA208-* | | | A-41661-BNCA228-* | | | A-41661-BNCD208-* | | | A-41661-BNCE208-* | | |
| MATERIAL | ENGINEERING | VOIDS | MATERIAL | ENGINEERING | VOIDS | MATERIAL | ENGINEERING | VOIDS | MATERIAL | ENGINEERING | VOIDS |
| 41661-0047 | -B2CA208 | | 41661-0070 | -B2CA228 | | 41661-0403 | -B2CD208 | | 41661-0426 | -B2CE208 | |
| 41661-0048 | -B3CA208 | | 41661-0071 | -B3CA228 | | 41661-0404 | -B3CD208 | | 41661-0427 | -B3CE208 | |
| 41661-0049 | -B4CA208 | | 41661-0072 | -B4CA228 | | 41661-0405 | -B4CD208 | | 41661-0428 | -B4CE208 | |
| 41661-0050 | -B5CA208 | | 41661-0073 | -B5CA228 | | 41661-0406 | -B5CD208 | | 41661-0429 | -B5CE208 | |
| 41661-0051 | -B6CA208 | | 41661-0074 | -B6CA228 | | 41661-0407 | -B6CD208 | | 41661-0430 | -B6CE208 | |
| 41661-0052 | -B7CA208 | | 41661-0075 | -B7CA228 | | 41661-0408 | -B7CD208 | | 41661-0431 | -B7CE208 | |
| 41661-0053 | -B8CA208 | | 41661-0076 | -B8CA228 | | 41661-0409 | -B8CD208 | | 41661-0432 | -B8CE208 | |
| 41661-0054 | -B9CA208 | | 41661-0077 | -B9CA228 | | 41661-0410 | -B9CD208 | | 41661-0433 | -B9CE208 | |
| 41661-0055 | -B10CA208 | | 41661-0078 | -B10CA228 | | 41661-0411 | -B10CD208 | | 41661-0434 | -B10CE208 | |
| 41661-0056 | -B11CA208 | | 41661-0079 | -B11CA228 | | 41661-0412 | -B11CD208 | | 41661-0435 | -B11CE208 | |
| 41661-0057 | -B12CA208 | | 41661-0080 | -B12CA228 | | 41661-0413 | -B12CD208 | | 41661-0436 | -B12CE208 | |
| 41661-0058 | -B13CA208 | | 41661-0081 | -B13CA228 | | 41661-0414 | -B13CD208 | | 41661-0437 | -B13CE208 | |
| 41661-0059 | -B14CA208 | | 41661-0082 | -B14CA228 | | 41661-0415 | -B14CD208 | | 41661-0438 | -B14CE208 | |
| 41661-0060 | -B15CA208 | | 41661-0083 | -B15CA228 | | 41661-0416 | -B15CD208 | | 41661-0439 | -B15CE208 | |
| 41661-0061 | -B16CA208 | | 41661-0084 | -B16CA228 | | 41661-0417 | -B16CD208 | | 41661-0440 | -B16CE208 | |
| 41661-0062 | -B17CA208 | | 41661-0085 | -B17CA228 | | 41661-0418 | -B17CD208 | | 41661-0441 | -B17CE208 | |
| 41661-0063 | -B18CA208 | | 41661-0086 | -B18CA228 | | 41661-0419 | -B18CD208 | | 41661-0442 | -B18CE208 | |
| 41661-0064 | -B19CA208 | | 41661-0087 | -B19CA228 | | 41661-0420 | -B19CD208 | | 41661-0443 | -B19CE208 | |
| 41661-0065 | -B20CA208 | | 41661-0088 | -B20CA228 | | 41661-0421 | -B20CD208 | | 41661-0444 | -B20CE208 | |
| 41661-0066 | -B21CA208 | | 41661-0089 | -B21CA228 | | 41661-0422 | -B21CD208 | | 41661-0445 | -B21CE208 | |
| 41661-0067 | -B22CA208 | | 41661-0090 | -B22CA228 | | 41661-0423 | -B22CD208 | | 41661-0446 | -B22CE208 | |
| 41661-0068 | -B23CA208 | | 41661-0091 | -B23CA228 | | 41661-0424 | -B23CD208 | | 41661-0447 | -B23CE208 | |
| 41661-0069 | -B24CA208 | | 41661-0092 | -B24CA228 | | 41661-0425 | -B24CD208 | | 41661-0448 | -B24CE208 | |

| | | | |
|---|---|--|-------------------------------|
| REV: BD1 | ECR/ECN INFORMATION: EC No.: UCP2010-1384 DATE: 2/10/2010 | TITLE: KK 156 HEADER ASSEMBLY FLAT BREAKAWAY 2-24 CKTS | SHEET No. - 10 - |
| DOCUMENT NUMBER: SD- 41661 -001 | | CREATED / REVISED BY: MKIPPER | CHECKED BY: SSOUSEK |
| | | APPROVED BY: FSMITH | |

| | | | | | | | | | | | |
|-------------------------|-------------|-------|-------------------------|-------------|-------|-------------------------|-------------|-------|--------------------------|-------------|-------|
| PIN NUMBER 2161-4(102) | | | PIN NUMBER 2161-35(102) | | | PIN NUMBER 2161-3(102) | | | PIN NUMBER 2161-19(102) | | |
| PIN LENGTH 12.70 / .500 | | | PIN LENGTH 17.45 / .687 | | | PIN LENGTH 23.80 / .937 | | | PIN LENGTH 26.21 / 1.032 | | |
| PLATING 102 | | | PLATING 102 | | | PLATING 102 | | | PLATING 102 | | |
| MATING "M" 5.89 / .232 | | | MATING "M" 9.63 / .379 | | | MATING "M" 17.02 / .670 | | | MATING "M" 11.48 / .452 | | |
| PCB "P" 3.56 / .140 | | | PCB "P" 4.57 / .180 | | | PCB "P" 3.53 / .139 | | | PCB "P" 11.48 / .452 | | |
| GOLD "G" NA | | | GOLD "G" NA | | | GOLD "G" NA | | | GOLD "G" N/A | | |
| TIN "T" OVERALL | | | TIN "T" OVERALL | | | TIN "T" OVERALL | | | TIN "T" OVERALL | | |
| PACKAGING PK-41661-001 | | | PACKAGING PK-41661-001 | | | PACKAGING PK-41661-001 | | | PACKAGING PK-41661-001 | | |
| STATUS | | | STATUS | | | STATUS | | | STATUS | | |
| A-41661-ANCF102-* | | | A-41661-ANCG102-* | | | A-41661-ANCH102-* | | | A-41661-ANCL102-* | | |
| MATERIAL | ENGINEERING | VOIDS | MATERIAL | ENGINEERING | VOIDS | MATERIAL | ENGINEERING | VOIDS | MATERIAL | ENGINEERING | VOIDS |
| 41661-0449 | -A02CF102 | | 41661-0472 | -A02CG102 | | | | | | | |
| 41661-0450 | -A03CF102 | | 41661-0473 | -A03CG102 | | | | | | | |
| 41661-0451 | -A04CF102 | | 41661-0474 | -A04CG102 | | 41661-0497 | A04CH102 | | | | |
| 41661-0452 | -A05CF102 | | 41661-0475 | -A05CG102 | | | | | | | |
| 41661-0453 | -A06CF102 | | 41661-0476 | -A06CG102 | | | | | 41661-0522 | -A06CL102 | |
| 41661-0454 | -A07CF102 | | 41661-0477 | -A07CG102 | | | | | | | |
| 41661-0455 | -A08CF102 | | 41661-0478 | -A08CG102 | | | | | | | |
| 41661-0456 | -A09CF102 | | 41661-0479 | -A09CG102 | | | | | 41661-0525 | -A09CL102 | |
| 41661-0457 | -A10CF102 | | 41661-0480 | -A10CG102 | | | | | | | |
| 41661-0458 | -A11CF102 | | 41661-0481 | -A11CG102 | | | | | | | |
| 41661-0459 | -A12CF102 | | 41661-0482 | -A12CG102 | | | | | | | |
| 41661-0460 | -A13CF102 | | 41661-0483 | -A13CG102 | | | | | | | |
| 41661-0461 | -A14CF102 | | 41661-0484 | -A14CG102 | | | | | | | |
| 41661-0462 | -A15CF102 | | 41661-0485 | -A15CG102 | | | | | | | |
| 41661-0463 | -A16CF102 | | 41661-0486 | -A16CG102 | | | | | | | |
| 41661-0464 | -A17CF102 | | 41661-0487 | -A17CG102 | | | | | | | |
| 41661-0465 | -A18CF102 | | 41661-0488 | -A18CG102 | | | | | | | |
| 41661-0466 | -A19CF102 | | 41661-0489 | -A19CG102 | | | | | | | |
| 41661-0467 | -A20CF102 | | 41661-0490 | -A20CG102 | | | | | | | |
| 41661-0468 | -A21CF102 | | 41661-0491 | -A21CG102 | | | | | | | |
| 41661-0469 | -A22CF102 | | 41661-0492 | -A22CG102 | | | | | | | |
| 41661-0470 | -A23CF102 | | 41661-0493 | -A23CG102 | | | | | | | |
| 41661-0471 | -A24CF102 | | 41661-0494 | -A24CG102 | | | | | | | |

| | | | |
|---|---|--|-------------------------------|
| REV: BD1 | ECR/ECN INFORMATION: EC No.: UCP2010-1384 DATE: 2/10/2010 | TITLE: KK 156 HEADER ASSEMBLY FLAT BREAKAWAY 2-24 CKTS | SHEET No. - 11 - |
| DOCUMENT NUMBER: SD- 41661 -001 | | CREATED / REVISED BY: MKIPPER | CHECKED BY: SSOUSEK |
| | | APPROVED BY: FSMITH | |

| | | | | | | | | | | | |
|------------------|--------------|------------|------------------|-------------|---------------|-------------------|---------------|-------|-------------------|-------------|-------|
| PIN NUMBER | 43294-0236 | PIN NUMBER | 43294-0614 | PIN NUMBER | 2161-5(102) | PIN NUMBER | 2161-64(102) | | | | |
| PIN LENGTH | 19.05 / .750 | PIN LENGTH | 29.21 / 1.150 | PIN LENGTH | 34.93 / 1.375 | PIN LENGTH | 29.85 / 1.175 | | | | |
| PLATING | 208 | PLATING | 208 | PLATING | 102 | PLATING | 102 | | | | |
| MATING "M" | 12.93 / .509 | MATING "M" | 21.21 / .835 | MATING "M" | 27.31 / 1.075 | MATING "M" | 24.38 / .960 | | | | |
| PCB "P" | 2.87 / .113 | PCB "P" | 4.75 / .187 | PCB "P" | 4.37 / .172 | PCB "P" | 2.21 / .087 | | | | |
| GOLD "G" | 6.86 / .270 | GOLD "G" | 6.86 / .270 | GOLD "G" | N/A | GOLD "G" | N/A | | | | |
| TIN "T" | 4.06 / .160 | TIN "T" | 5.08 / .200 | TIN "T" | OVERALL | TIN "T" | OVERALL | | | | |
| PACKAGING | PK-41661-001 | PACKAGING | PK-41661-001 | PACKAGING | PK-41661-001 | PACKAGING | PK-41661-001 | | | | |
| STATUS | | STATUS | | STATUS | | STATUS | | | | | |
| A-41661-BNB208-* | | | A-41661-BND208-* | | | A-41661-ANCM102-* | | | A-41661-ANCN102-* | | |
| MATERIAL | ENGINEERING | VOIDS | MATERIAL | ENGINEERING | VOIDS | MATERIAL | ENGINEERING | VOIDS | MATERIAL | ENGINEERING | VOIDS |
| | -B02B208 | | | -B02D208 | | | | | | | |
| | -B03B208 | | | -B03D208 | | | | | | | |
| | -B04B208 | | 41661-0566 | -B04D208 | | | | | | | |
| | -B05B208 | | | -B05D208 | | | | | | | |
| | -B06B208 | | | -B06D208 | | | | | | | |
| | -B07B208 | | | -B07D208 | | | | | | | |
| | -B08B208 | | | -B08D208 | | | | | | | |
| | -B09B208 | | | -B09D208 | | | | | | | |
| 41661-0549 | -B10B208 | | | -B10D208 | | | | | 41661-0621 | -A10CN102 | |
| | -B11B208 | | | -B11D208 | | | | | | | |
| 41661-0551 | -B12B208 | | | -B12D208 | | 41661-0600 | -A12CM102 | | | | |
| | -B13B208 | | | -B13D208 | | | | | | | |
| | -B14B208 | | | -B14D208 | | | | | | | |
| | -B15B208 | | | -B15D208 | | | | | | | |
| | -B16B208 | | | -B16D208 | | | | | | | |
| | -B17B208 | | | -B17D208 | | | | | | | |
| | -B18B208 | | | -B18D208 | | | | | | | |
| | -B19B208 | | | -B19D208 | | | | | | | |
| | -B20B208 | | | -B20D208 | | | | | | | |
| | -B21B208 | | | -B21D208 | | | | | | | |
| | -B22B208 | | | -B22D208 | | | | | | | |
| | -B23B208 | | | -B23D208 | | | | | | | |
| | -B24B208 | | | -B24D208 | | | | | | | |

| | | | |
|---|---|--|-------------------------------|
| REV: BD1 | ECR/ECN INFORMATION: EC No.: UCP2010-1384 DATE: 2/10/2010 | TITLE: KK 156 HEADER ASSEMBLY FLAT BREAKAWAY 2-24 CKTS | SHEET No. - 12 - |
| DOCUMENT NUMBER: SD- 41661 -001 | CREATED / REVISED BY: MKIPPER | CHECKED BY: SSOUSEK | APPROVED BY: FSMITH |

