



**PRINCIPAL SPECIFICATIONS**

Model Number	Freq. Range, GHz	Isolation, dB, Min.	Insertion Loss, dB, Max.	Phase Balance, Max.	Amplitude Balance, dB, Max.	VSWR, Max.		CW Power, W, at load VSWR			Outline Dwg.
						In	Out	1.2:1	2.0:1	∞	
PDM-84-5G	2.0 - 8.0	18	1.5	8°	0.5	1.6:1	1.5:1	30	10	1	1
PDM-84-12G	6.0 - 18.0	15	2.0	12°	0.5	1.60:1	1.50:1	30	10	1	2

**General Notes:**

1. The PDM-84-G series eight way Power Divider/Combiners covers 2 to 18 GHz using a multi-section stripline Wilkinson design providing high isolation and low VSWR. Etched PTFE fiberglass stripline circuits are encased in an aluminum machined housing that minimizes moding and provides an effective RF shield.

**GENERAL SPECIFICATIONS**

Impedance: 50 Ω nom.

Weight, nominal:

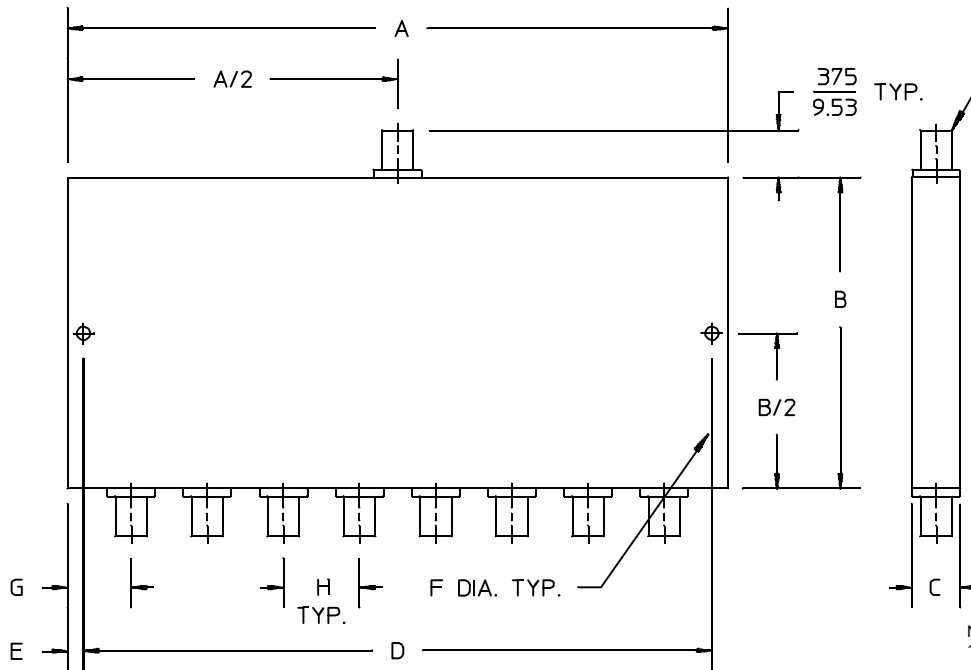
PDM-84-5G: 8.5 oz. (.240 g)

PDM-84-12G: 6.5 oz. (.185 g)

Operating Temperature: -55° to +85°C

**Package Outline**

CONNECTOR, RECEPTACLE, FEMALE, SMA TYPE, MATES WITH CONNECTOR, PLUG, MALE PER MIL-C-39012 TYP.



- NOTES:  
 1. Tolerance on 3 place decimals ±.020(.51) except as noted.  
 2. Dimensions in inches over mm..

OUTLINE	A	B	C	D	E	F	G	H
1	$\frac{3.200}{81.28}$	$\frac{4.000}{101.60}$	$\frac{.380}{9.65}$	$\frac{3.000}{76.20}$	$\frac{.100}{2.54}$	$\frac{.125}{3.18}$	$\frac{.200}{5.08}$	$\frac{.400}{10.16}$
2	$\frac{3.200}{81.28}$	$\frac{2.850}{72.39}$	$\frac{.380}{9.65}$	$\frac{3.000}{76.20}$	$\frac{.100}{2.54}$	$\frac{.125}{3.18}$	$\frac{.200}{5.08}$	$\frac{.400}{10.16}$

29Apr96