

**PLEASE CHECK WWW.MOLEX.COM FOR LATEST PART INFORMATION**

**Part Number:** **0887418700**  
**Status:** **Active**  
**Description:** MicroCross™ DVI Digital Visual Interface, Shielded I/O Adapter, DVI-Analog Plug to VGA Receptacle

**Documents:**

[Drawing \(PDF\)](#) [RoHS Certificate of Compliance \(PDF\)](#)

**General**

Product Family	I/O Connectors
Series	88744
Application	Wire-to-Board
Comments	DVI-Analog Plug to VGA Receptacle
Component Type	Adapter
Obsolete Date	2003/01/01
Product Name	MicroCross™DVI
Type	N/A

**Physical**

Circuits (Loaded)	29
Circuits (maximum)	29
Color - Resin	Black
Durability (mating cycles max)	100
Lock to Mating Part	Yes
Material - Metal	Brass
Material - Plating Mating	Gold
Material - Plating Termination	Tin
Material - Resin	Polyester
Orientation	Vertical
PCB Retention	Yes
Packaging Type	Bag
Panel Mount	No
Pitch - Mating Interface (in)	0.075 In, 0.100 In
Pitch - Mating Interface (mm)	1.90 mm, 2.54 mm
Plating min: Mating (µin)	10, 2
Plating min: Mating (µm)	0.05, 0.25
Plating min: Termination (µin)	150
Plating min: Termination (µm)	3.75
Polarized to Mating Part	Yes
Surface Mount Compatible (SMC)	N/A
Temperature Range - Operating	-20°C to +85°C
Termination Interface: Style	Solder or Weld
Wire Size AWG	N/A

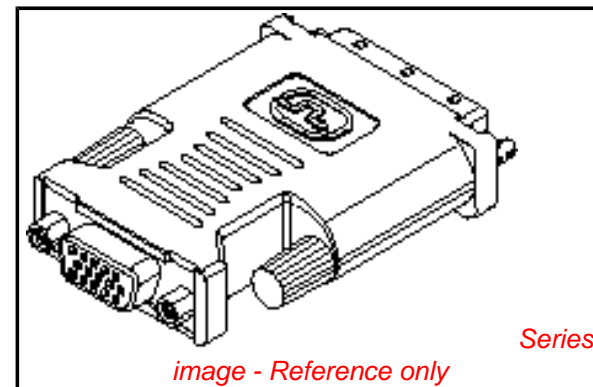
**Electrical**

Current - Maximum per Contact	3A
Shielded	Yes
Voltage - Maximum	40V

**Material Info**

**Reference - Drawing Numbers**

Sales Drawing	SD-88741-008
---------------	--------------



*image - Reference only*

**EU RoHS**

**RoHS Compliant by Exemption**

**REACH SVHC**

Not Reviewed

**Halogen-Free**

**Status**

**Not Reviewed**

**Need more information on product environmental compliance?**

Email [productcompliance@molex.com](mailto:productcompliance@molex.com)  
 For a multiple part number RoHS Certificate of Compliance, [click here](#)

Please visit the [Contact Us](#) section for any non-product compliance questions.

**China RoHS**



Pb

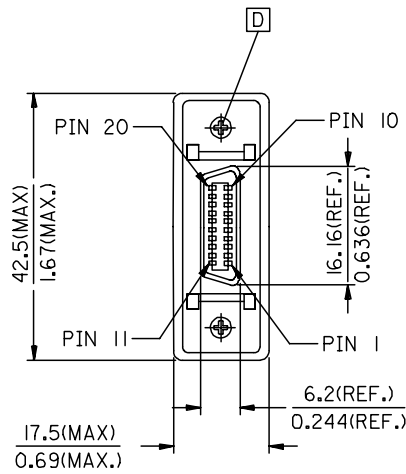
**Search Parts in this Series**

88744Series

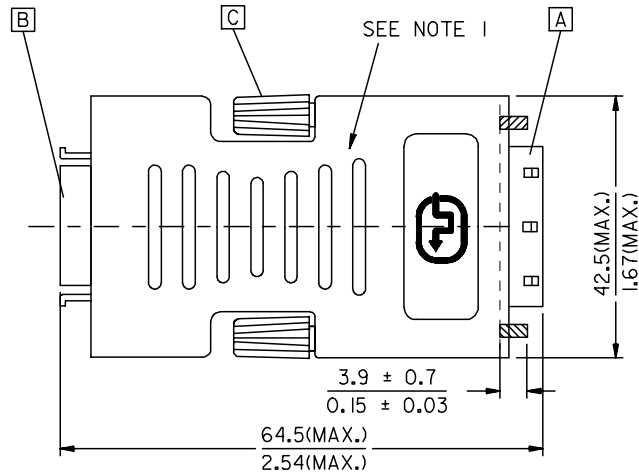
**Mates With**

74320 receptacles

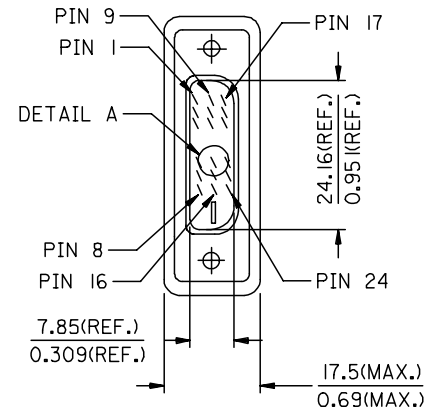
**PLEASE CHECK [WWW.MOLEX.COM](http://WWW.MOLEX.COM) FOR LATEST PART INFORMATION**



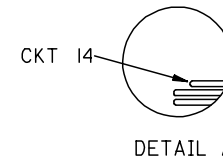
DFP(F)



BACK SIDE



DVI\_D(M)



DETAIL A

ENTER DESCRIPTION EC NO: DG2006-0186 DRWN:PDAI CHKD: APPR:TKAN	DESCRIPTION 2006/03/09 2006/03/09 2006/03/10	QUALITY SYMBOLS	GENERAL TOLERANCES (UNLESS SPECIFIED)	DIMENSION STYLE	SCALE	DESIGN UNITS	THIRD ANGLE PROJECTION															
		$\nabla = 0$ $\sphericalangle = 0$	<table border="1"> <thead> <tr> <th></th> <th>mm</th> <th>INCH</th> </tr> </thead> <tbody> <tr> <td>4 PLACES</td> <td>± ---</td> <td>± ---</td> </tr> <tr> <td>3 PLACES</td> <td>± ---</td> <td>± ---</td> </tr> <tr> <td>2 PLACES</td> <td>± ---</td> <td>± ---</td> </tr> <tr> <td>1 PLACE</td> <td>± ---</td> <td>± ---</td> </tr> </tbody> </table>		mm	INCH	4 PLACES	± ---	± ---	3 PLACES	± ---	± ---	2 PLACES	± ---	± ---	1 PLACE	± ---	± ---	MM/IN	---	METRIC	
			mm	INCH																		
		4 PLACES	± ---	± ---																		
3 PLACES	± ---	± ---																				
2 PLACES	± ---	± ---																				
1 PLACE	± ---	± ---																				
DRAFT WHERE APPLICABLE MUST REMAIN WITHIN DIMENSIONS	DRAWN BY PDAI	DATE 2006/03/07	TITLE DVI_D(M)-DFP(F) ADAPTER																			
REV			ANGULAR ± ---°	CHECKED BY ZXDENG	DATE 2006/03/07	APPROVED BY BORON	DATE 2006/03/07	MOLEX INCORPORATED														
				MATERIAL NO. 88741-8800	DOCUMENT NO. SD-88741-009	SHEET NO. 1 OF 2																
				SIZE A4	THIS DRAWING CONTAINS INFORMATION THAT IS PROPRIETARY TO MOLEX INCORPORATED AND SHOULD NOT BE USED WITHOUT WRITTEN PERMISSION																	

NOTE:1. MOLD WITH SNOW WHITE PVC RESIN 887800077 FOR ADAPTOR COVER.

2. DVI CONNCETOR SPECIFICATION

2.1 REFER TO PRODUCT SPEC. PS74320-0001.

2.2 CONTACT PLATING: AU FLASH.

3. ELECTRICAL PERFORMANCE

3.1 INSULATION RESISANCE: 20M Ohms Min

3.2 DIELECTRIC STRENGTH: 300V DC FOR 10 MILLISECONDS.

4. ADAPTOR SPECIFICATION

4.1 REFER TO PRODUCT SPEC. PS88741-8800.

5. THIS PRODUCT MUST MEET MX RoHS COMPLIANCE.

6. CONNECTION DIAGRAM

SHIEDL	SHIELD	GROUND
PIN 6	PIN 24	TMDS CLOCK-
PIN 5	PIN 23	TMDS CLOCK+
PIN 4	PIN 22	TMDS CLOCK SHIELD
PIN 14	PIN 19	TMDS DATA 0 SHIELD
PIN 15	PIN 18	TMDS DATA 0+
PIN 16	PIN 17	TMDS DATA 0-
PIN 18	PIN 16	HOT PLUG DETECT
PIN 7	PIN 15	GROUND(+5V & HV SYNC.)
PIN 8	PIN 14	POWER +5V
PIN 3	PIN 11	TMDS DATA 1 SHIELD
PIN 1	PIN 10	TMDS DATA 1+
PIN 2	PIN 9	TMDS DATA 1-
PIN 19	PIN 7	DDC DATA
PIN 20	PIN 6	DDC CLOCK
PIN 13	PIN 3	TMDS DATA 2 SHIELD
PIN 11	PIN 2	TMDS DATA 2+
PIN 12	PIN 1	TMDS DATA 2-
DFP(F)	DVI_D	CABLE FUNCTION

7. MATERIAL LIST

ITEM	DESCRIPTION
D	DFP CONNECTOR FEMALE SCREW 887806063
C	SCREW (FOR COVER) 887806003
B	DFP FEMALE CONNECTOR 887899292
A	DVI_D SINGLE CHANNEL G/F CONNECTOR 743230001

ENTER DESCRIPTION EC NO: DG2006-0186 DRWN:PDAI 2006/03/09 CHKD: 2006/03/09 APPR:TKAN 2006/03/10 REV	QUALITY SYMBOLS	GENERAL TOLERANCES (UNLESS SPECIFIED)	DIMENSION STYLE	SCALE	DESIGN UNITS	THIRD ANGLE PROJECTION															
	▽=0 ▽=0	<table border="1"> <tr><th></th><th>mm</th><th>INCH</th></tr> <tr><td>4 PLACES</td><td>±---</td><td>±---</td></tr> <tr><td>3 PLACES</td><td>±---</td><td>±---</td></tr> <tr><td>2 PLACES</td><td>±---</td><td>±---</td></tr> <tr><td>1 PLACE</td><td>±---</td><td>±---</td></tr> </table> ANGULAR ±---°		mm	INCH	4 PLACES	±---	±---	3 PLACES	±---	±---	2 PLACES	±---	±---	1 PLACE	±---	±---	MM/IN	---	METRIC	
		mm	INCH																		
	4 PLACES	±---	±---																		
3 PLACES	±---	±---																			
2 PLACES	±---	±---																			
1 PLACE	±---	±---																			
	DRAFT WHERE APPLICABLE MUST REMAIN WITHIN DIMENSIONS	DRAWN BY PDAI DATE 2006/03/07 CHECKED BY ZXDENG DATE 2006/03/07 APPROVED BY BORON DATE 2006/03/07 MATERIAL NO. 88741-8800 DOCUMENT NO. SD-88741-009	TITLE																		
						DVI_D(M)-DFP(F) ADAPTER MOLEX INCORPORATED SHEET NO. 2 OF 2															