

PLEASE CHECK WWW.MOLEX.COM FOR LATEST PART INFORMATION

Part Number: **0481410003**
Status: **Active**
Description: 2.50mm (.098") Pitch, SDIO Memory Card Connector without Card Lock Pin, Reverse Mount, Stand Off Height 1.20mm (.047"), supports SD/MMC Cards, Lead-Free

Documents:

[3D Model](#)
[Drawing \(PDF\)](#)

[RoHS Certificate of Compliance \(PDF\)](#)

General

Product Family	Memory Card Sockets
Series	48141
Button Type	Push-Push
Comments	Supports SD/MMC Cards . With reinforced housing guide
Component Type	Header & Ejector (Host)
Product Name	SDIO
Type	N/A

Physical

Card Detection Switch	Yes
Circuits (Loaded)	9
Circuits (maximum)	9
Durability (mating cycles max)	10,000
Ejector Button Side	No Ejector Button Present
Entry Angle	90° Angle (Side Entry)
Keying to Mating Part	Yes
Material - Metal	Copper Alloy
Material - Plating Mating	Gold
Material - Plating Termination	Gold
Material - Resin	High Temperature Thermoplastic
PCB Locator	Yes
PCB Mounting Side	Reverse
PCB Retention	Yes
Packaging Type	Embossed Tape on Reel
Pitch - Mating Interface (in)	0.098 In
Pitch - Mating Interface (mm)	2.50 mm
Pitch - Term. Interface (in)	0.066 In, 0.098 In
Pitch - Term. Interface (mm)	1.70 mm, 2.50 mm
Ports	1
Surface Mount Compatible (SMC)	Yes
Temperature Range - Operating	-25°C to +90°C

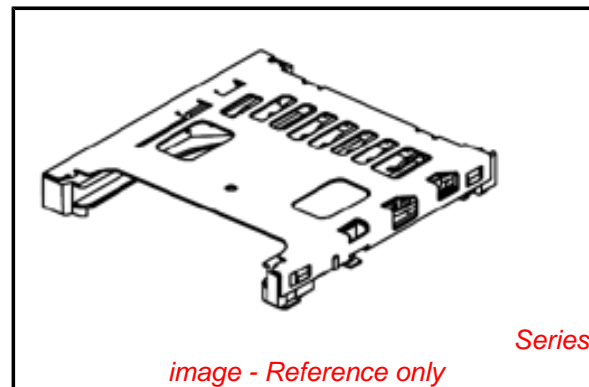
Electrical

Current - Maximum per Contact	0.5A
Shielded	Yes
Voltage - Maximum	250V DC

Material Info

Reference - Drawing Numbers

Sales Drawing	SD-48141-002
---------------	--------------



EU RoHS

ELV and RoHS Compliant
REACH SVHC
 Not Reviewed
Halogen-Free Status
 Not Reviewed

China RoHS



Need more information on product environmental compliance?

Email productcompliance@molex.com
 For a multiple part number RoHS Certificate of Compliance, [click here](#)

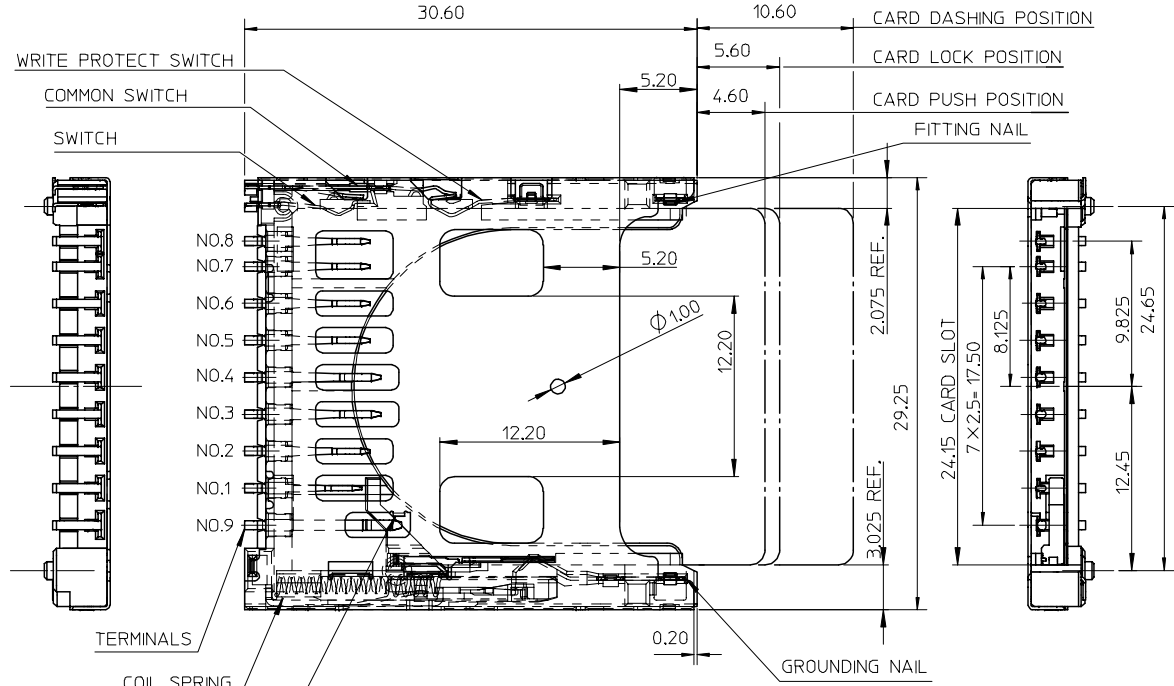
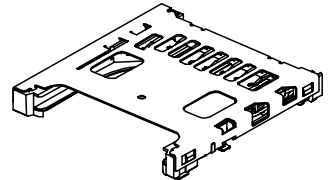
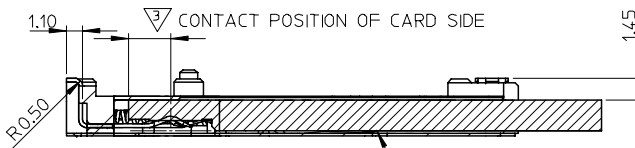
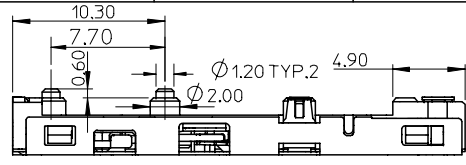
Please visit the [Contact Us](#) section for any non-product compliance questions.

Search Parts in this Series

[48141Series](#)

Mates With

Standard SD, MMC Cards



NOTES:
1.HOUSING: HIGH TEMPERATURE THERMOPLASTIC.
GLASS FIBER FILLED,UL94V-0, COLOR: BLACK
TERMINAL: COPPER ALLOY, SELECTIVE Au PLATING
MATEL SHELL: STAINLESS STEEL
EACH SWITCHES: COPPER ALLOY, SELECTIVE Au PLATING.
EACH NAILS: COPPER ALLOY, SELECTIVE AU PLATING.
COIL SPRING: STEEL WIRE.
CAM PIN: STAINLESS STEEL

2.TERMINAL AND NAIL COPLANARITY TO BE 0.1MAX

CONTACT POSITION OF CARD SIDE

TERMINAL NO.	CONTACT POSITION
NO.1	2.4
NO.2,5,6,7,8	2.9
NO.3,4	3.4
NO.9	5.2

4.OPEN/CLOSE OF EACH SWITCH

	PROTECT TERMINAL		SWITCH
	WRITE PROTECT POSITION	WRITE ENABLE POSITION	
CARD UNINSERTION	OPEN	OPEN	OPEN
CARD HALF INSERTION	CLOSE	CLOSE	OPEN
CARD INSERTION	OPEN	CLOSE	CLOSE

- 5.TERMINAL 1 TO BE SIGNAL DETECTING WHEN SD CARD INSERTING
- 6.WHEN DELIVERING, THE PUSH/PUSH MECHANISM IS IN THE STATE OF THE UNLOCK.(CARD DASHING OUT POSITION)
- 7.CARD READ ONLY BY THE TIME THE CARD DETECTION.
- 8.I/O CONTACTS, BASE ON SD I/O ASSOC. REV.G.
- 9.PRODUCT SPECIFICATION: PS-67913-003
- 10.PRODUCT COMPLIANT TO RoHS DIRECTIVE 2002/95/EC AND ELV 2000/53/EC.

UPDATE DRAWING
EC NO: SH2007-0815
DRWN: LSONG09 2007/05/17
CHKD: JTIAN 2007/05/18
APPR: JNCHEN 2007/05/28

QUALITY SYMBOLS
▽=0
▽=0

GENERAL TOLERANCES (UNLESS SPECIFIED)

	MM	INCH
4 PLACES	± ---	± ---
3 PLACES	± ---	± ---
2 PLACES	± 0.25	± ---
1 PLACE	± 0.25	± ---

ANGULAR ± 3 °

DRAFT WHERE APPLICABLE MUST REMAIN WITHIN DIMENSIONS

DIMENSION STYLE
MM ONLY

DRAWN BY DATE
MZCHEN 2006/01/05

CHECKED BY DATE
JTIAN 2006/01/05

APPROVED BY DATE
GRMA 2006/01/05

MATERIAL NO.
481410003

SCALE
3:1

DESIGN UNITS
METRIC

THIRD ANGLE PROJECTION

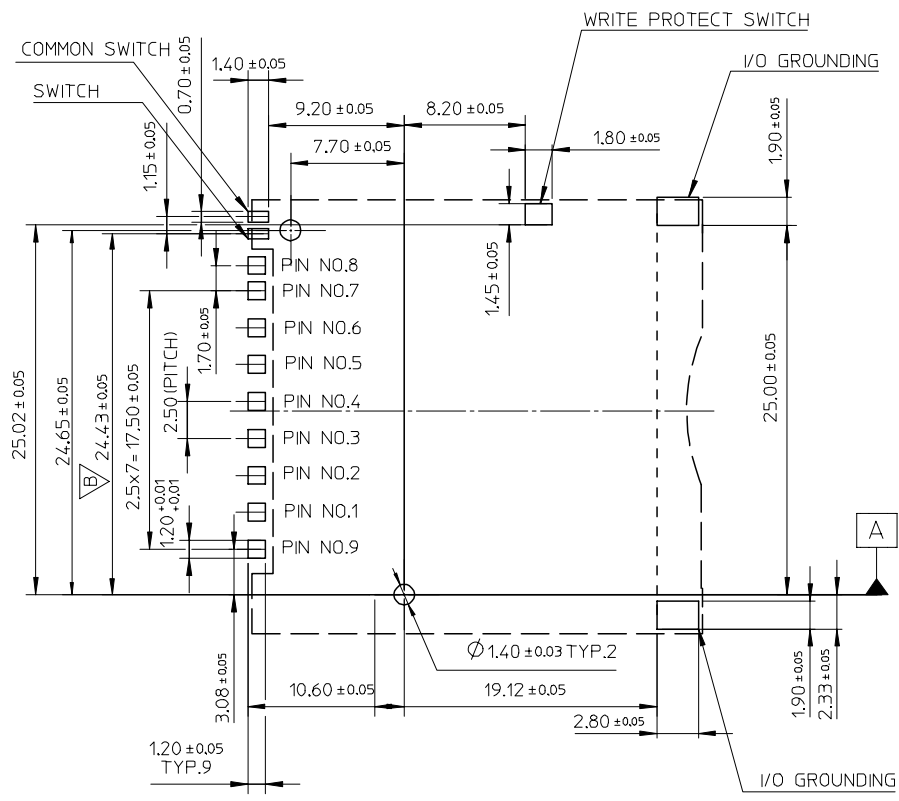
TITLE
SD/I/O CARD CONN REVERSED
STAND OFF 1.2MM
PUSH-PUSH & LEAD-FREE

MOLEX INCORPORATED

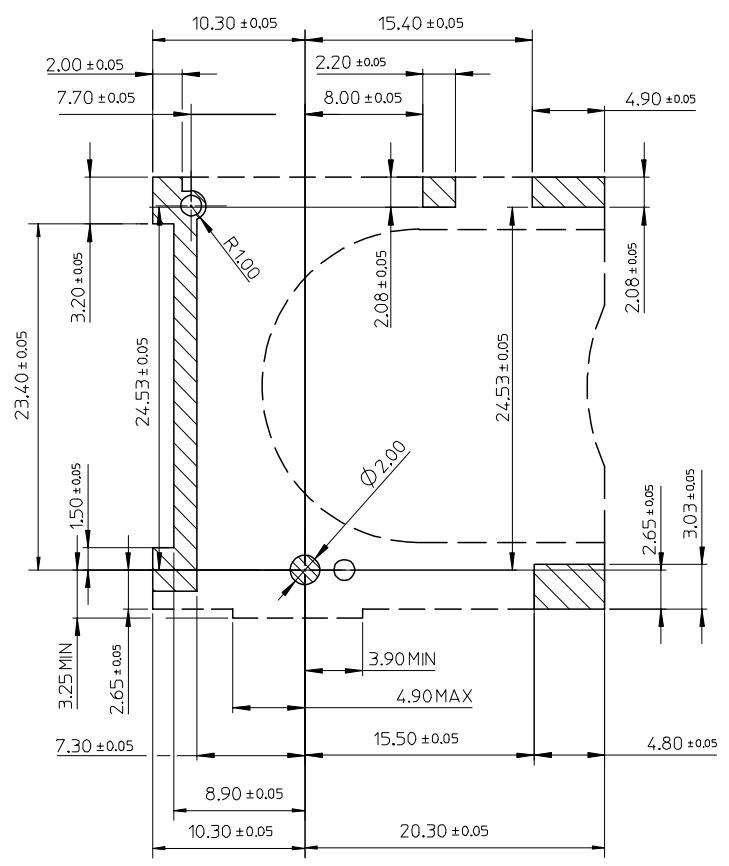
DOCUMENT NO.
SD-48141-002

SHEET NO.
1 OF 3

THIS DRAWING CONTAINS INFORMATION THAT IS PROPRIETARY TO MOLEX INCORPORATED AND SHOULD NOT BE USED WITHOUT WRITTEN PERMISSION



□ RECOMMENDED PCB PATTERN LAYOUT



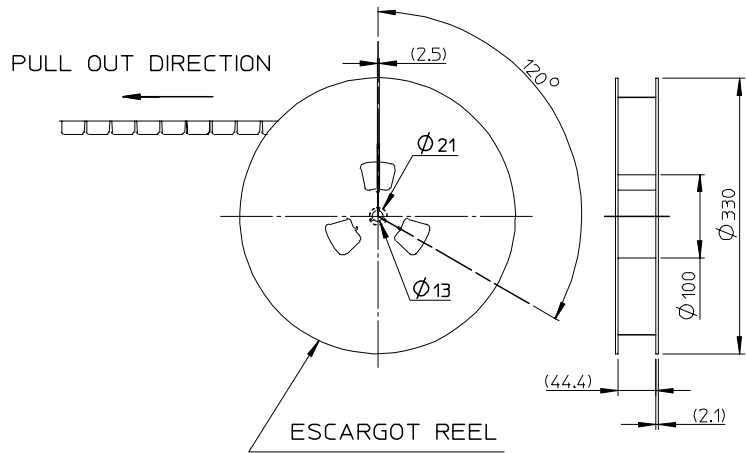
STAND OFF AREA FOR PATTERN PROHIBITION

UPDATE DRAWING	DESCRIPTION
EC NO: SH2007-0815	REV
DRWN: LSONG09	REV
CHKD: JTIAN	REV
APPR: JNCHEH	REV
2007/05/17	REV
2007/05/18	REV
2007/05/28	REV

QUALITY SYMBOLS	DESCRIPTION
▽=0	
∇=0	

GENERAL TOLERANCES (UNLESS SPECIFIED)	MM	INCH
4 PLACES	± ---	± ---
3 PLACES	± ---	± ---
2 PLACES	± 0.25	± ---
1 PLACE	± 0.25	± ---
ANGULAR ± 3 °		
DRAFT WHERE APPLICABLE MUST REMAIN WITHIN DIMENSIONS		

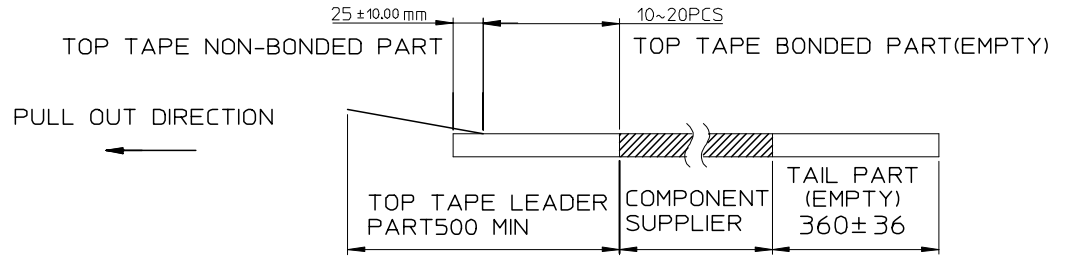
DIMENSION STYLE		SCALE	DESIGN UNITS	THIRD ANGLE PROJECTION
MM ONLY		3:1	METRIC	
DRAWN BY	DATE	TITLE		
MZCHEN	2006/01/05	SD/IO CARD CONN REVERSED		
CHECKED BY	DATE	STAND OFF 1.2MM		
JTIAN	2006/01/05	PUSH-PUSH & LEAD-FREE		
APPROVED BY	DATE	MOLEX INCORPORATED		
GRMA	2006/01/05			
MATERIAL NO.	DOCUMENT NO.	SHEET NO.		
481410003	SD-48141-002	2 OF 3		
SIZE	THIS DRAWING CONTAINS INFORMATION THAT IS PROPRIETARY TO MOLEX INCORPORATED AND SHOULD NOT BE USED WITHOUT WRITTEN PERMISSION			
A3				



NOTES

1. NUMBER OF CONNECTORS: 250 PCS/REEL

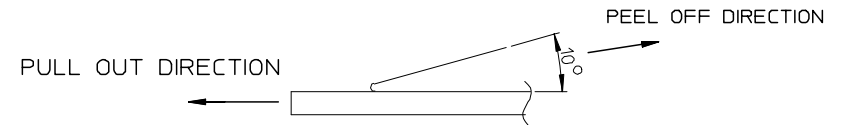
2.



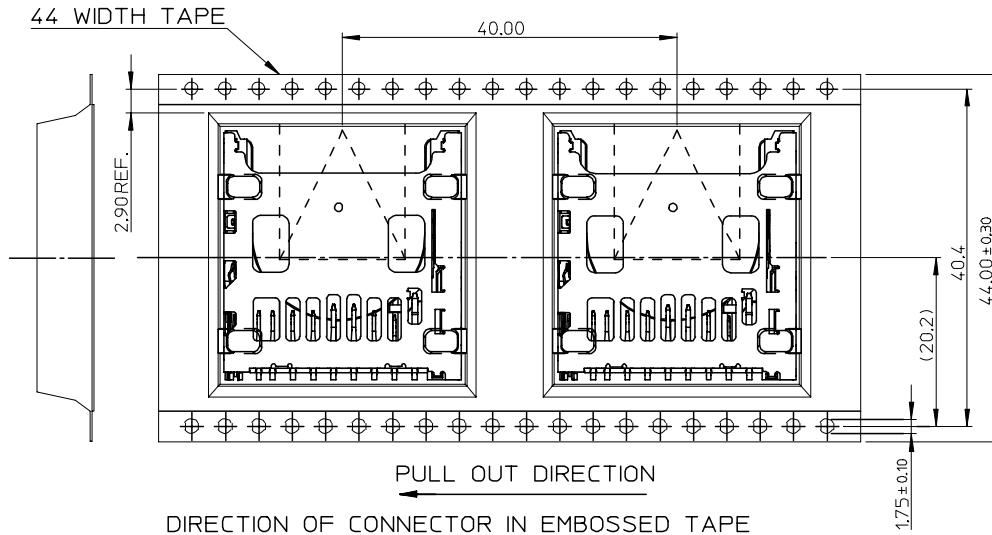
3. PEEL OFF FORCE OF TOP TAPE: 0.1~1.3 N (10.2~130gf)

PEELING DIRECTION AS SHOWN IN FOLLOWING FIG.)

(PEEL OFF SPEED: 300mm/min.REF.)



4. PACKAGING DRAWING REFERS TO PK-48141-001.



UPDATE DRAWING EC NO: SH2007-0815 DRWN: LSONG09 2007/05/17 CHKD: JTIAN 2007/05/18 APPR: JNCHEH 2007/05/28	QUALITY SYMBOLS ▽=0 ◻=0	GENERAL TOLERANCES (UNLESS SPECIFIED)		DIMENSION STYLE MM ONLY	SCALE 1:1	DESIGN UNITS METRIC	THIRD ANGLE PROJECTION
		4 PLACES ± --- ± --- 3 PLACES ± --- ± --- 2 PLACES ± 0.25 ± --- 1 PLACE ± 0.25 ± ---	mm INCH	DRAWN BY DATE MZCHEN 2006/01/05	TITLE SD/IO CARD CONN REVERSED STAND OFF 1.2MM PUSH-PUSH & LEAD-FREE		
		ANGULAR ± 3 °	APPROVED BY DATE JTIAN 2006/01/05	MOLEX INCORPORATED	SHEET NO. 3 OF 3		
		DRAFT WHERE APPLICABLE MUST REMAIN WITHIN DIMENSIONS	MATERIAL NO. 481410003	DOCUMENT NO. SD-48141-002			