

**PLEASE CHECK WWW.MOLEX.COM FOR LATEST PART INFORMATION**

**Part Number:** [0873691000](#)  
**Status:** **Active**  
**Description:** 2.00mm (.079") Pitch Crimp Housing, Single Row, 10 Circuits

**Documents:**

[3D Model](#) [RoHS Certificate of Compliance \(PDF\)](#)  
[Drawing \(PDF\)](#)

**Agency Certification**

CSA LR19980  
 UL E29179

**General**

Product Family Crimp Housings  
 Series [87369](#)  
 Product Name N/A

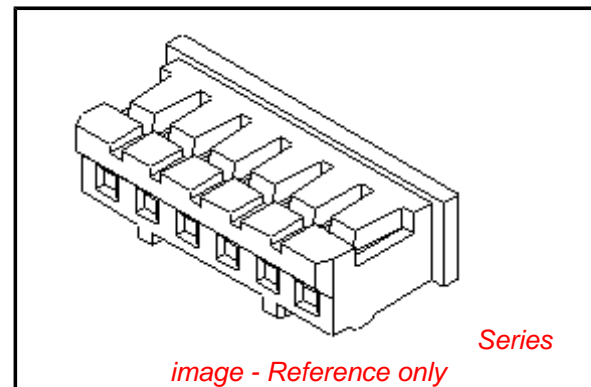
**Physical**

Circuits (maximum) 10  
 Color - Resin Natural  
 Flammability 94V-0  
 Gender Female  
 Glow-Wire Compliant No  
 Lock to Mating Part Yes  
 Material - Resin Nylon  
 Number of Rows 1  
 Packaging Type Bag  
 Panel Mount No  
 Pitch - Mating Interface (in) 0.079 In  
 Pitch - Mating Interface (mm) 2.00 mm  
 Stackable No  
 Temperature Range - Operating -25°C to +85°C

**Material Info**

**Reference - Drawing Numbers**

Product Specification RPS-87369-001  
 Sales Drawing SD-87369-\*\*0\*



**EU RoHS**

**ELV and RoHS  
 Compliant**  
**REACH SVHC  
 Contains SVHC: No**  
**Halogen-Free  
 Status**

**China RoHS**



**Need more information on product  
 environmental compliance?**

Email [productcompliance@molex.com](mailto:productcompliance@molex.com)  
 For a multiple part number RoHS Certificate of  
 Compliance, [click here](#)

Please visit the [Contact Us](#) section for any  
 non-product compliance questions.

**Search Parts in this Series**

[87369Series](#)

**Mates With**

[89400](#) Vertical Header, [89401](#) Right Angle  
 Header

**Use With**

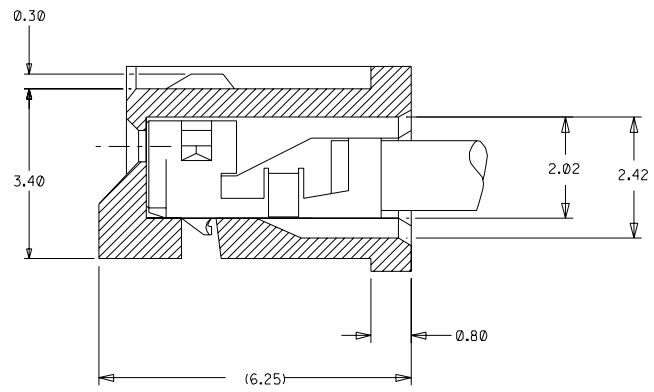
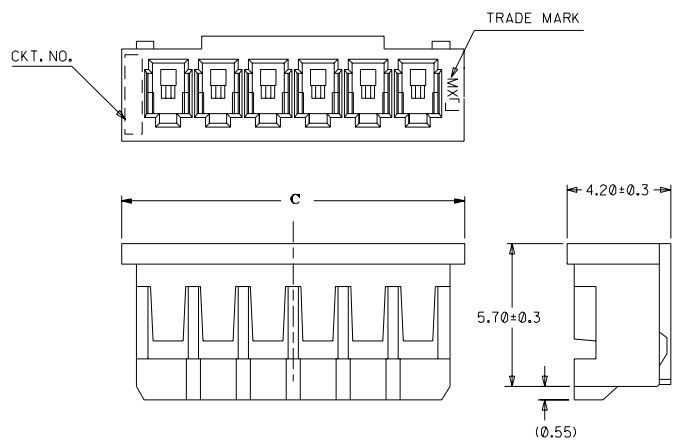
[50212](#) Crimp Terminals. [104440](#) 2.00mm  
 (.079") Pitch Crimp Terminals

DWG. NO. SD 87369-\*\*-00

CAD FILE S87369.DGN

▽

DO NOT SCALE DRAWING



**TERMINAL ASSEMBLY DRAWING**  
(10:1)

**PART NO.LEGEND**

87369 - \*\* 0 \*

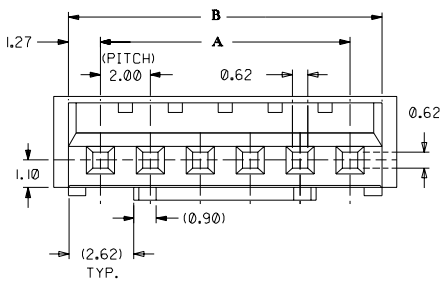
CKT SIZE ———— COLOR OPTION

0 - NATURAL  
1 - BLACK  
2 - RED  
3 - YELLOW  
4 - BLUE  
5 - GREEN

**NOTES**

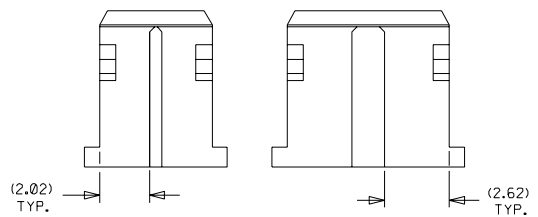
1. APPLICABLE TERMINAL :50212-8\*00
2. MATERIAL : NYLON 66, UL94V-0 NATURAL
3. MATES WITH 89400-\*\*-10/\*\*20 & 89401-\*\*-10

C	B	A	ENG NO.	CKT
33.74	32.54	30	87369-160*	16
31.74	30.54	28	87369-150*	15
29.74	28.54	26	87369-140*	14
27.74	26.54	24	87369-130*	13
25.74	24.54	22	87369-120*	12
23.74	22.54	20	87369-110*	11
21.74	20.54	18	87369-100*	10
19.74	18.54	16	87369-090*	9
17.74	16.54	14	87369-080*	8
15.74	14.54	12	87369-070*	7
13.74	12.54	10	87369-060*	6
11.74	10.54	8	87369-050*	5
9.74	8.54	6	87369-040*	4
7.74	6.54	4	87369-030*	3
5.74	4.54	2	87369-020*	2



**IN CASE OF  
2 CIRCUIT HSG.**

**IN CASE OF  
3 CIRCUIT HSG.**



**UNITS : MM**

				MATERIAL : SEE NOTES		MOLEX SINGAPORE PTE LTD SHEET 1 OF 1	
B5	REVISE PART NO. LEGEND & NOTE 3 PER ECN 1999-0061	-	SAK	980814	GENERAL TOLERANCES ± 0.20/0.008		REV B5
B4	REL 87369-**-05 (GREEN) AS PER PDR* 98-06-0330 (AS) PER ECN* S1998-0617)	-	SEE TOH	980623	DWG. NO.: SD   87369-**-0*		
B3	ADD COLOR OPTION REPLACE SD-87369-**-0*	S60565	SAK	GMS	960618	TITLE : 2.0 MM PITCH WIRE TO BOARD CONN. RECEPTACLE	
LTR	REVISION RECORD	ECN	DR	CHK	DATE	DRAWN BY CLEE 920305	CHK'D BY JOEY 920326
REVISE ONLY ON CAD SYSTEM						APPR'D BY ROY 920326	SCALE 5:1