

PLEASE CHECK WWW.MOLEX.COM FOR LATEST PART INFORMATION

Part Number: [0701070009](#)
Status: **Active**
Overview: [cgrid_sl_products](#)
Description: 2.54mm (.100") Pitch SL™ Wire-to-Wire Crimp Housing, Single Row, Version A, without Mounting Ears, 10 Circuits

Documents:

[3D Model](#) [Product Specification PS-70400 \(PDF\)](#)
[Drawing \(PDF\)](#) [RoHS Certificate of Compliance \(PDF\)](#)

Agency Certification

| | |
|-----|-----------|
| CSA | LR19980 |
| TUV | R72081037 |
| UL | E29179 |

General

| | |
|----------------|-----------------------------------|
| Product Family | Crimp Housings |
| Series | 70107 |
| Comments | Version A |
| Overview | cgrid_sl_products |
| Product Name | SL™ |

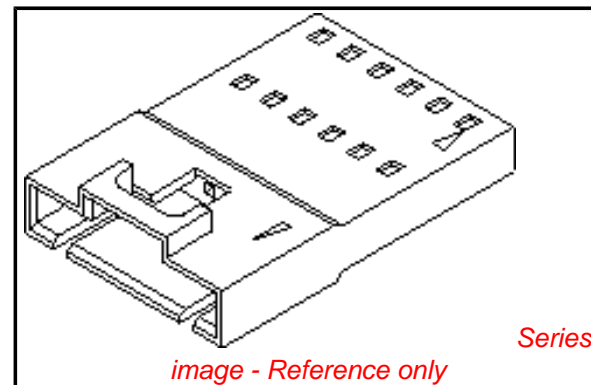
Physical

| | |
|-------------------------------|-----------------|
| Circuits (maximum) | 10 |
| Color - Resin | Black |
| Flammability | 94V-0 |
| Gender | Female |
| Glow-Wire Compliant | No |
| Material - Resin | Polyester |
| Number of Rows | 1 |
| Packaging Type | Bag |
| Panel Mount | No |
| Pitch - Mating Interface (in) | 0.100 In |
| Pitch - Mating Interface (mm) | 2.54 mm |
| Stackable | No |
| Temperature Range - Operating | -40°C to +105°C |

Material Info

Reference - Drawing Numbers

| | |
|-------------------------|--------------------|
| Packaging Specification | PK-70107-100 |
| Product Specification | PS-70400 |
| Sales Drawing | SD-70107-0001-0024 |



EU RoHS

**ELV and RoHS
Compliant**
**REACH SVHC
Contains SVHC: No
Halogen-Free
Status**

China RoHS



**Need more information on product
environmental compliance?**

Email productcompliance@molex.com
 For a multiple part number RoHS Certificate of Compliance, [click here](#)

Please visit the [Contact Us](#) section for any non-product compliance questions.

Search Parts in this Series

[70107Series](#)

Mates With

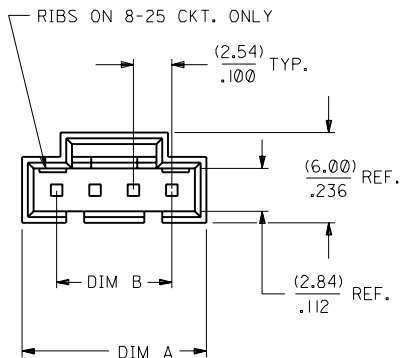
[70400G](#) ,, [70066g](#) Housing, [70430g](#) Receptacle

Use With

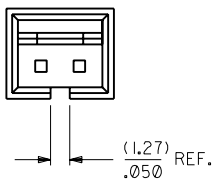
[70021](#)

NOTES:

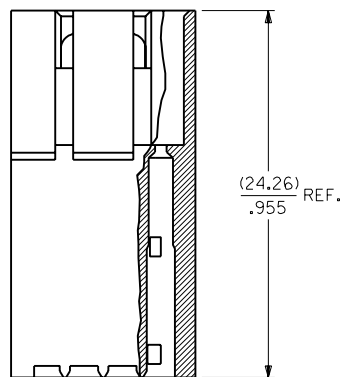
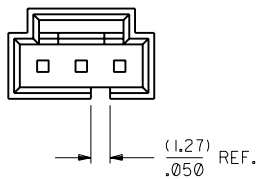
- 1) MATERIAL: GLASS FILLED POLYESTER, UL 94V-0
COLOR: BLACK
- 2) HOUSING TO BE USED WITH TERMINAL
PT. NO. 70021-****.
- 3) SEE CHART FOR CIRCUIT SIZES.
- 4) TO BE USED WITH 70400 SERIES
CONNECTORS (STYLE "G").
- 5) PACKAGE PER PK-70107-100.



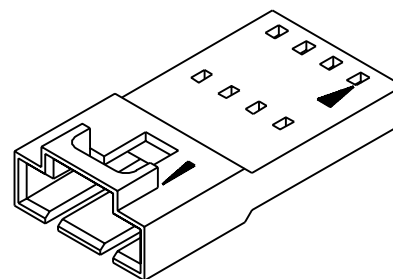
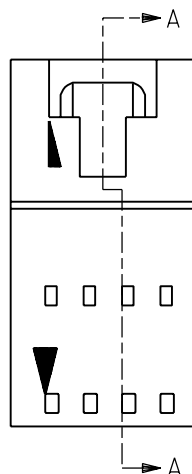
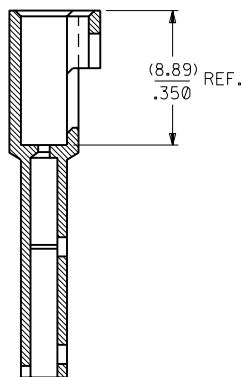
2 CIRCUIT



3 CIRCUIT



SECTION A-A



| CKT. SIZE | EDP. NO. | ENG. NO. | A | B |
|-----------|-------------|------------|------------------|------------------|
| 2 | 701-07-0001 | 70107-0001 | (7.11) .280 | (2.54) .100 |
| 3 | 701-07-0002 | 70107-0002 | (9.65) .380 | (5.08) .200 |
| 4 | 701-07-0003 | 70107-0003 | (12.19) .480 | (7.62) .300 |
| 5 | 701-07-0004 | 70107-0004 | (14.73) .580 | (10.16) .400 |
| 6 | 701-07-0005 | 70107-0005 | (17.27) .680 | (12.70) .500 |
| 7 | 701-07-0006 | 70107-0006 | (19.81) .780 | (15.24) .600 |
| 8 | 701-07-0007 | 70107-0007 | (22.35) .880 | (17.78) .700 |
| 9 | 701-07-0008 | 70107-0008 | (24.89) .980 | (20.32) .800 |
| 10 | 701-07-0009 | 70107-0009 | (27.43) 1.080 | (22.86) .900 |
| 11 | 701-07-0010 | 70107-0010 | (29.97) 1.180 | (25.40) 1.000 |
| 12 | 701-07-0011 | 70107-0011 | (32.51) 1.280 | (27.94) 1.100 |
| 13 | 701-07-0012 | 70107-0012 | (35.05) 1.380 | (30.48) 1.200 |
| 14 | 701-07-0013 | 70107-0013 | (37.59) 1.480 | (33.02) 1.300 |
| 15 | 701-07-0014 | 70107-0014 | (40.13) 1.580 | (35.56) 1.400 |
| 16 | 701-07-0015 | 70107-0015 | (42.67) 1.680 | (38.10) 1.500 |
| 17 | 701-07-0016 | 70107-0016 | (45.21) 1.780 | (40.64) 1.600 |
| 18 | 701-07-0017 | 70107-0017 | (47.75) 1.880 | (43.18) 1.700 |
| 19 | 701-07-0018 | 70107-0018 | (50.29) 1.980 | (45.72) 1.800 |
| 20 | 701-07-0019 | 70107-0019 | (52.83) 2.080 | (48.26) 1.900 |
| 21 | 701-07-0020 | 70107-0020 | (55.37) 2.180 | (50.80) 2.000 |
| 22 | 701-07-0021 | 70107-0021 | (57.91) 2.280 | (53.34) 2.100 |
| 23 | 701-07-0022 | 70107-0022 | (60.45) 2.380 | (55.88) 2.200 |
| 24 | 701-07-0023 | 70107-0023 | (62.99) 2.480 | (58.42) 2.300 |
| 25 | 701-07-0024 | 70107-0024 | (65.53) 2.580 | (60.96) 2.400 |

| | | | | | |
|--|--|--|--|--|--|
| H ADD PKG NOTE PER UDT2000-0468 SCHAFER 9/2/12/1 | | DIMENSIONS SHOWN (METRIC) INCH UNLESS OTHERWISE SPECIFIED TOLERANCES: ANGULAR ± 1/2° | | MFG, SH, REV. | |
| I I FIXED REV BLOCK I TO CORRECT ECR * PER UDT2002-0499 KSTILES 01/09/25 | | G REVISE PER ECR #J81037 2/22/88 MJM | | INCH METRIC 3 PLACE ± .010 --- 2 PLACE ± .014 ± 0.25 1 PLACE --- ± 0.35 | |
| I CHANGED MATERIAL AND SWITCHED A AND B DIMS PER UDT2002-0007 KSTILES 01/07/17 | | F REDRAWN ON CAD ADD SHEET 2 PER ECR #9280 8/21/86 MJM | | DRAFT WHERE APPLICABLE MUST REMAIN WITHIN DIMENSIONS | |
| LTR. REVISIONS | | LTR. REVISIONS | | DRWG. NO. SD-70107-0001-0024 FILE NAME S70107X01 APP'D. BY WAZ SCALE 4 : 1 DIV. 12 DATE 07/02/86 SHEET NO. 1 MOLEX INCORPORATED LISLE, ILL. 60532 U.S.A. THIS DRAWING CONTAINS INFORMATION THAT IS PROPRIETARY TO MOLEX INC. AND SHOULD NOT BE USED WITHOUT WRITTEN PERMISSION. | |