

PLEASE CHECK WWW.MOLEX.COM FOR LATEST PART INFORMATION

Part Number: [0430251400](#)
Status: **Active**
Overview: [microfit_30](#)
Description: 3.00mm (.118") Pitch Micro-Fit 3.0™ Receptacle Housing, Dual Row, 14 Circuits

Documents:

[3D Model](#) [Product Specification PS-43045 \(PDF\)](#)
[Drawing \(PDF\)](#) [RoHS Certificate of Compliance \(PDF\)](#)

Agency Certification

CSA	LR19980
TUV	R72081037
UL	E29179

General

Product Family	Crimp Housings
Series	43025
Comments	Glow Wire Equivalent Part Number 430251408 . Polarized to Mating Part
Overview	microfit_30
Product Literature Order No	USA-106
Product Name	Micro-Fit 3.0™

Physical

Circuits (maximum)	14
Circuits Detail	14
Color - Resin	Black
Flammability	94V-0
Gender	Female
Glow-Wire Compliant	No
Keying to Mating Part	None
Lock to Mating Part	Yes
Material - Resin	Polyester
Number of Rows	2
Packaging Type	Bag
Panel Mount	No
Pitch - Mating Interface (in)	0.118 In
Pitch - Mating Interface (mm)	3.00 mm
Polarized to Mating Part	Yes
Stackable	No
Temperature Range - Operating	-40°C to +105°C

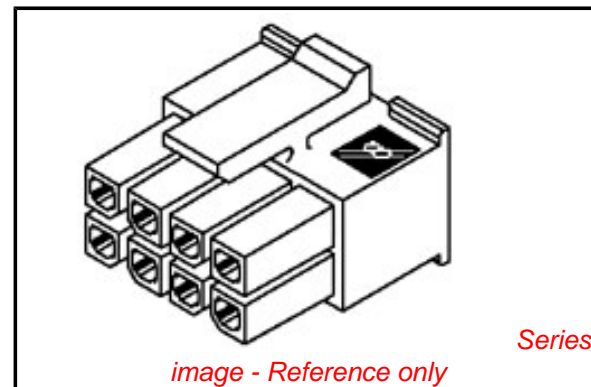
Electrical

Current - Maximum per Contact	5A
-------------------------------	----

Material Info

Reference - Drawing Numbers

Packaging Specification	PK-43025-001
Product Specification	PS-43045, RPS-43045-003, RPS-43045-004
Sales Drawing	SDA-43025-****
Test Summary	TS-43045-001



EU RoHS

ELV and RoHS Compliant
REACH SVHC
 Not Reviewed
Halogen-Free Status

China RoHS



Not Halogen-Free

Need more information on product environmental compliance?

Email productcompliance@molex.com
 For a multiple part number RoHS Certificate of Compliance, [click here](#)

Please visit the [Contact Us](#) section for any non-product compliance questions.

Search Parts in this Series

[43025Series](#)

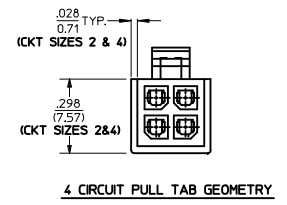
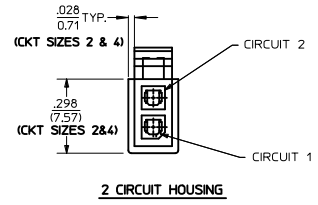
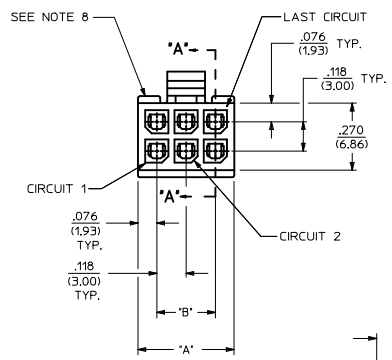
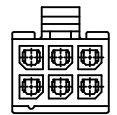
Mates With

Micro-Fit 3.0™ Plug Housing [43020](#). Micro-Fit 3.0™ Header [43045](#). Micro-Fit 3.0™ Test Plug [44242](#)

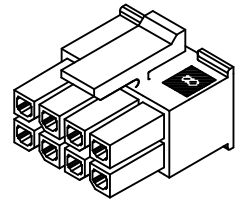
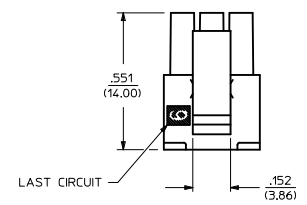
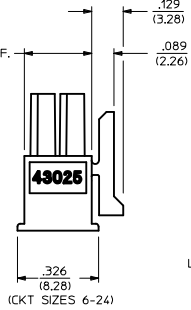
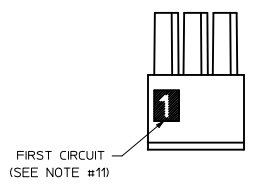
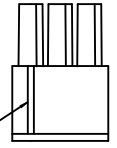
Use With

Micro-Fit 3.0™ Crimp Terminal [43030](#)

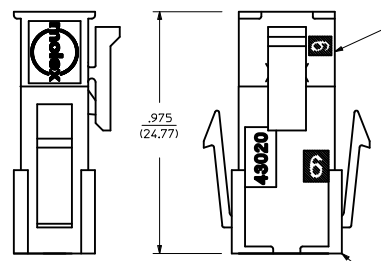
PART CHARACTERISTICS		CKT. NO.	DIM. 'A'	DIM. 'B'
NUMBER OF POSITION	ASSEMBLY ITEM NUMBER			
02	43025-0200	2	.152/(3.86)	N/A
04	43025-0400	4	.270/(6.85)	.118/(3.00)
06	43025-0600	6	.388/(9.85)	.236/(6.00)
08	43025-0800	8	.506/(12.85)	.354/(9.00)
10	43025-1000	10	.624/(15.85)	.472/(12.00)
12	43025-1200	12	.742/(18.85)	.591/(15.00)
14	43025-1400	14	.860/(21.85)	.709/(18.00)
16	43025-1600	16	.978/(24.85)	.827/(21.00)
18	43025-1800	18	1.096/(27.85)	.945/(24.00)
20	43025-2000	20	1.215/(30.85)	1.063/(27.00)
22	43025-2200	22	1.333/(33.85)	1.181/(30.00)
24	43025-2400	24	1.451/(36.85)	1.299/(33.00)



HOUSING SHOWN WITH OPTIONAL FIRST CIRCUIT IDENTIFIER RIB (SEE NOTE #11)



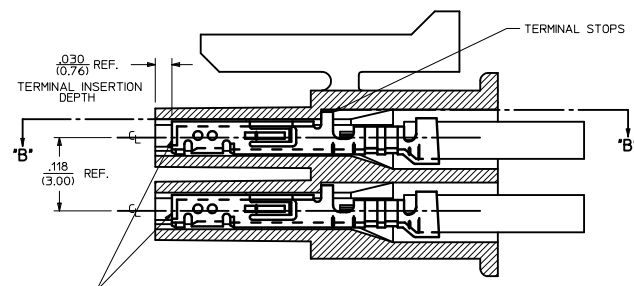
RECEPTACLE ISO VIEW (8 CIRCUIT SHOWN) (SEE NOTE 9 FOR TESTING)



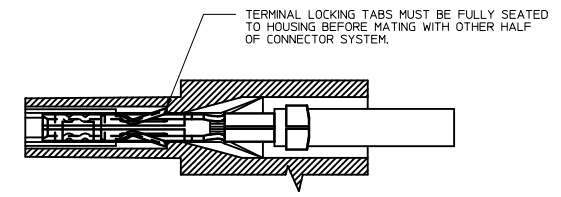
MATED MICRO-FIT CONNECTOR

RECEPTACLE #43025-****

PLUG #43020-****



SECTION "A"-A' WITH TERMINAL (SCALE 10:1)



SECTION "B"-B' (SCALE 10:1)

- NOTES:
- HOUSING MATERIAL: UNFILLED POLYESTER, RATED UL, 94V-0, COLOR IS BLACK.
 - FINISH: N/A
 - PRODUCT SPECIFICATION: PS-43045
 - PACKAGING SPECIFICATION: PK-43025-001
 - THIS RECEPTACLE MATES WITH 43020, 43045.
 - THIS RECEPTACLE TO BE USED WITH MOLEX FEMALE TERMINAL #43030-****. SEE SECTION "A"-A' FOR TERMINAL ORIENTATION IN HOUSING.
 - FOR OVERMOLDING PARAMETERS SEE ENGINEERING SPECIFICATION #SDS-43025-1000.
 - TOP PULL TABS ARE NOT AVAILABLE ON 2 AND 4 CIRCUIT PARTS.
 - MOLEX RECOMMENDS THE USE OF MICRO-FIT TEST PLUG, SERIES NO. 44242-**** WHENEVER TESTING IS PERFORMED. TEST PLUGS MUST NOT BE USED FOR MAKE OR BREAK UNDER LOAD. MOLEX DOES NOT RECOMMEND USING STANDARD MATING COMPONENTS FOR HARNESS TESTING PURPOSES.
 - SOME HOUSINGS MAY HAVE A SMALL GATE BLEMISH NEAR THE GATE THAT DOES NOT AFFECT FUNCTIONALITY.
 - HOUSINGS MAY HAVE EITHER AN IDENTIFIER RIB OR "1" SYMBOL ENGRAVE TO INDICATE CIRCUIT #1.
 - THIS PART CONFORMS TO CLASS 'B' REQUIREMENTS OF COSMETIC SPECIFICATION PS-45499-002.

ADD PK SPEC. NOTES EC NO: UCP2010-0075 DPC/MAS/SOISEK 2009/11/18 CHIKO/BELL 2009/11/25 APPR/ESH/TH 2009/11/30 M1	QUALITY SYMBOLS ▽=0 ▽=0	GENERAL TOLERANCES (UNLESS SPECIFIED)		DIMENSION STYLE IN/MM		SCALE 4:1	DESIGN UNITS METRIC	THIRD ANGLE PROJECTION
		4 PLACES ± ± 3 PLACES ± --- ± .010 2 PLACES ± 0.25 ± .014 1 PLACE ± 0.35 ± ---	DRAWN BY A. F. G.	DATE 1993/01/14	TITLE MICRO-FIT (3.0) 2 THRU 24 CIRCUIT RECEPTACLE			
		ANGULAR ±1/2°	CHECKED BY B. A. P.	DATE 1993/01/14	MOLEX INCORPORATED			
		DRAFT WHERE APPLICABLE MUST REMAIN WITHIN DIMENSIONS	APPROVED BY R. A. S.	DATE 1993/01/14	MATERIAL NO. SEE CHART	DOCUMENT NO. SDA-43025-****	SHEET NO. 1 OF 1	

THIS DRAWING CONTAINS INFORMATION THAT IS PROPRIETARY TO MOLEX INCORPORATED AND SHOULD NOT BE USED WITHOUT WRITTEN PERMISSION