

PLEASE CHECK WWW.MOLEX.COM FOR LATEST PART INFORMATION

Part Number: [0712510012](#)
Status: **Active**
Description: 1.27mm (.050") Pitch DIMM Socket, Vertical, Multiple Keys, Plastic Peg, 168 Circuits, 3.3V Unbuffered

Documents:

[3D Model](#) [Product Specification PS-71243-9999 \(PDF\)](#)
[Drawing \(PDF\)](#) [RoHS Certificate of Compliance \(PDF\)](#)

Agency Certification

CSA LR19980
 UL E29179

General

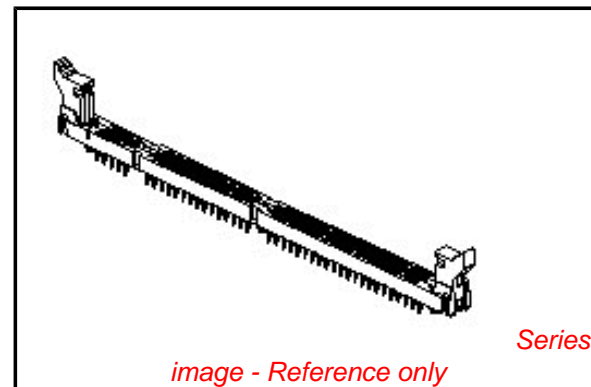
Product Family Memory Module Sockets
 Series [71251](#)
 Comments Function Key Offset Right, Voltage Key Center
 Component Type Memory Module
 JEDEC Outline MO-161
 Product Name DIMM

Physical

Circuits (Loaded) 168
 Circuits (maximum) 168
 Color - Resin Black, Natural
 Durability (mating cycles max) 25
 Entry Angle Vertical
 Flammability 94V-0
 Function Key Offset Right
 Keying to Mating Part Yes
 Material - Metal Phosphor Bronze
 Material - Plating Mating Gold
 Material - Plating Termination Tin
 Material - Resin High Temperature Thermoplastic
 PC Tail Length (in) 0.127 In
 PC Tail Length (mm) 3.23 mm
 PCB Locator Yes
 PCB Retention Yes
 PCB Thickness Recommended (in) 0.062 In
 PCB Thickness Recommended (mm) 1.57 mm
 Packaging Type Tray
 Pitch - Mating Interface (in) 0.050 In
 Pitch - Mating Interface (mm) 1.27 mm
 Pitch - Term. Interface (in) 0.050 In
 Pitch - Term. Interface (mm) 1.27 mm
 Plating min: Mating (µin) 2
 Plating min: Mating (µm) 0.05
 Plating min: Termination (µin) 150
 Plating min: Termination (µm) 3.81
 Temperature Range - Operating -40°C to +85°C
 Termination Interface: Style Through Hole

Electrical

Current - Maximum per Contact 1A
 Voltage - Maximum 100V AC (RMS)/DC
 Voltage Key Center



EU RoHS

ELV and RoHS Compliant
REACH SVHC
Contains SVHC: No
Halogen-Free Status

China RoHS



Need more information on product environmental compliance?

Email productcompliance@molex.com
 For a multiple part number RoHS Certificate of Compliance, [click here](#)

Please visit the [Contact Us](#) section for any non-product compliance questions.

Search Parts in this Series

[71251Series](#)

Mates With

JEDEC MO-161 modules

Solder Process Data

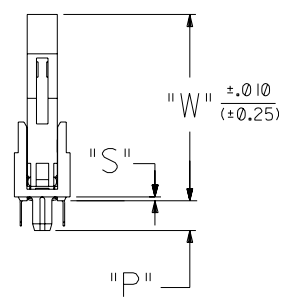
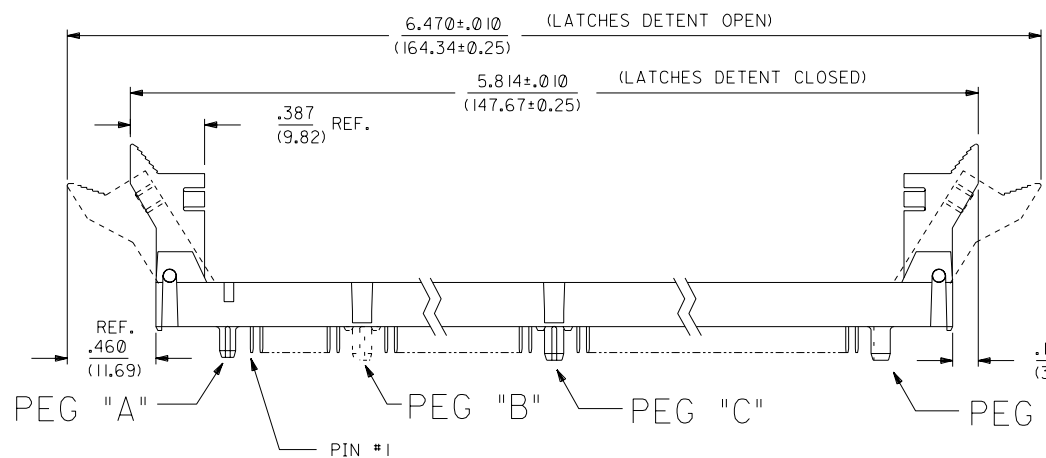
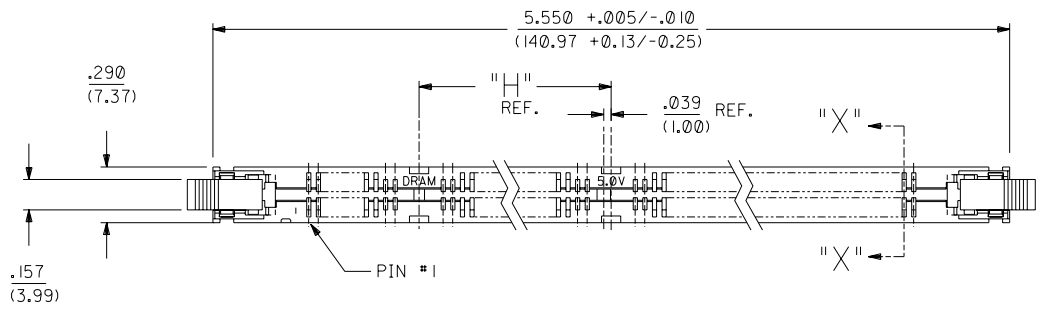
| | |
|--|------------------------|
| Duration at Max. Process Temperature (seconds) | 40 |
| Lead-free Process Capability | Wave Capable (TH only) |
| Max. Cycles at Max. Process Temperature | 3 |
| Process Temperature max. C | 260 |

Material Info**Reference - Drawing Numbers**

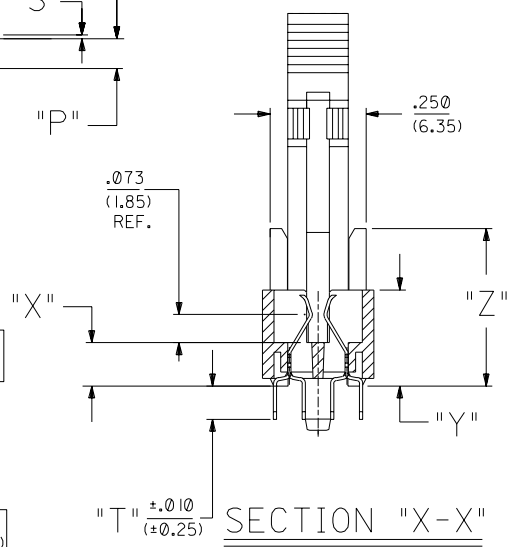
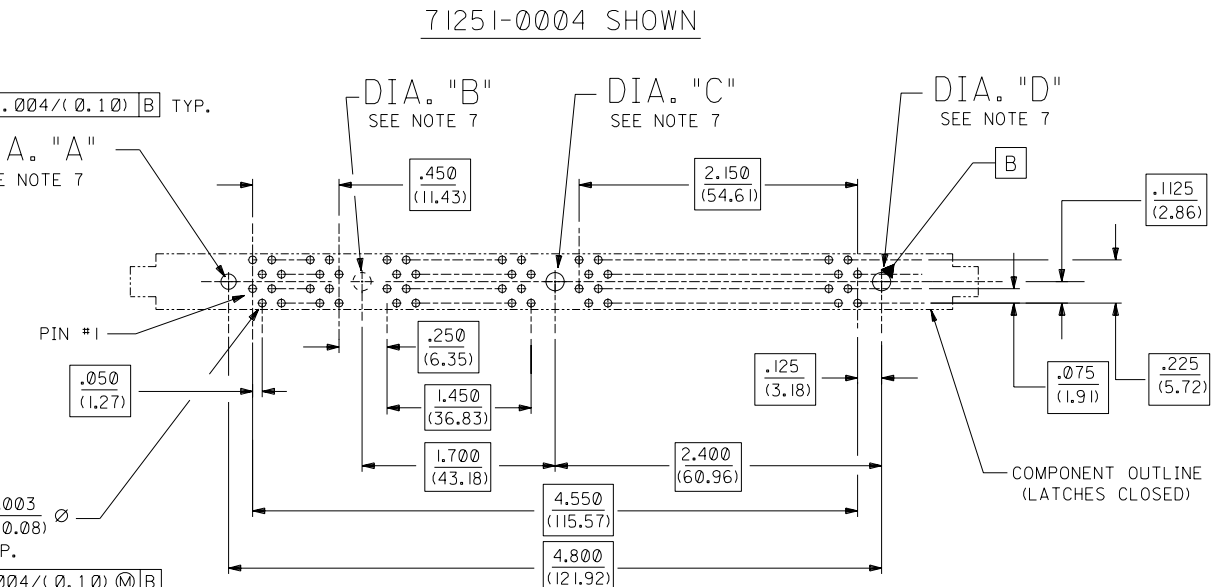
| | |
|-----------------------|----------------|
| Product Specification | PS-71243-9999 |
| Sales Drawing | SDA-71251-0*** |

This document was generated on 04/13/2010

PLEASE CHECK WWW.MOLEX.COM FOR LATEST PART INFORMATION



NOTE FOR LEAD FREE CONVERSION:
 THE PRIMARY SHIPPING CARTON WILL BE LABELED "COMPLIANT TO RoHS DIRECTIVE 2002/95/EC AND ELV ANNEX II OF DIRECTIVE 2000/53/EC". CARTONS WITHOUT THIS LABEL MAY CONTAIN PRODUCT WITH LEAD.



SCALE 4:1

- NOTES:
- CARD SLOT ACCEPTS $.050 \pm .004$ (1.27 ± 0.10) MODULE THICKNESS. (MEASURED OVER P.C. PADS).
 - ALL PEGS ARE INTERFERENCE FITS TO PCB UNLESS NOTED ON THE DWG.
 - REFER TO PRODUCT SPEC PS-71243-9999 FOR PERFORMANCE SPECIFICATIONS.
 - PRODUCT IS PACKAGED IN TRAYS.
 - RECOMMENDED MODULE LAYOUT SHALL BE PER JEDEC MO-161.
 - RECOMMENDED PLATING ON MODULE PADS: 30 MICROINCH/(0.76 MICROMETER) MINIMUM HARD GOLD (Au) OVER 79 MICROINCH/(2.0 MICROMETER) MINIMUM NICKEL (Ni).
 - SEE CHART FOR HOLE SIZE AND PRESENCE AND PLATING OPTION.
 - PRODUCT WILL HAVE DATE CODE STAMPED ON SIDE OF HOUSING.

MATERIALS:
 HOUSING - GLASS FILLED LIQUID CRYSTAL POLYMER (LCP), UL 94V-0, COLOR: BLACK.
 TERMINAL - PHOSPHOR BRONZE
 LATCHES - GLASS FILLED HIGH TEMPERATURE NYLON, UL 94V-0, COLOR: IVORY.

PLATING:
 CONTACT AREA: OPTION A: GOLD (Au) FLASH; THICKNESS=2-10 MICROINCH/(0.05-0.25 (0.05-0.25 MICROMETER), OVER PALLADIUM-NICKEL (Pd-Ni); THICKNESS=30 MICROINCH/(0.76 MICROMETER) MINIMUM.
 OPTION B: GOLD (Au) FLASH; THICKNESS=2-10 MICROINCH/(0.05-0.25 MICROMETER), OVER PALLADIUM-NICKEL (Pd-Ni); THICKNESS=20 MICROINCH/(0.51 MICROMETER) MINIMUM.

SOLDER TAILS: TIN (Sn); THICKNESS=150 MICROINCH/(3.81 MICROMETER) MINIMUM.
 UNDERPLATE: NICKEL (Ni) OVER ENTIRE CONTACT.

| | |
|----|---|
| H1 | ADD LEAD FREE NOTE ECR# UC2004-1732 DMORGAN 04/03/09 |
| H | RELEASE -0027 ECR# UD2000-1151 DMORGAN 00/05/19 |
| H | RELEASE -0027 ECR# UD2000-1151 DMORGAN 00/05/19 |
| G | CHG Sn-Pb THICKNESS ECR# UD1999-0454 DMORGAN 99/08/09 |
| F3 | REVISED PER ECR# U80435 97-8-8 LAURX |
| F2 | REVISED PER ECR# U71162 97-4-15 LAURX |
| F1 | REVISED PER ECR# U70361 96-10-9 LAURX |
| F | REVISED PER ECR# U61133 96-9-25 LAURX |
| E1 | REVISED PER ECR# U60836 1-19-96 JCL |
| E | REVISED PER ECR# U60682 12-7-95 JCL |
| D2 | REVISED PER ECR# U60452 10-10-95 JCL |
| D1 | REVISED PER ECR# U60361 9-18-95 JCL |
| D | REVISED PER ECR# U51288 8-4-95 JCL |

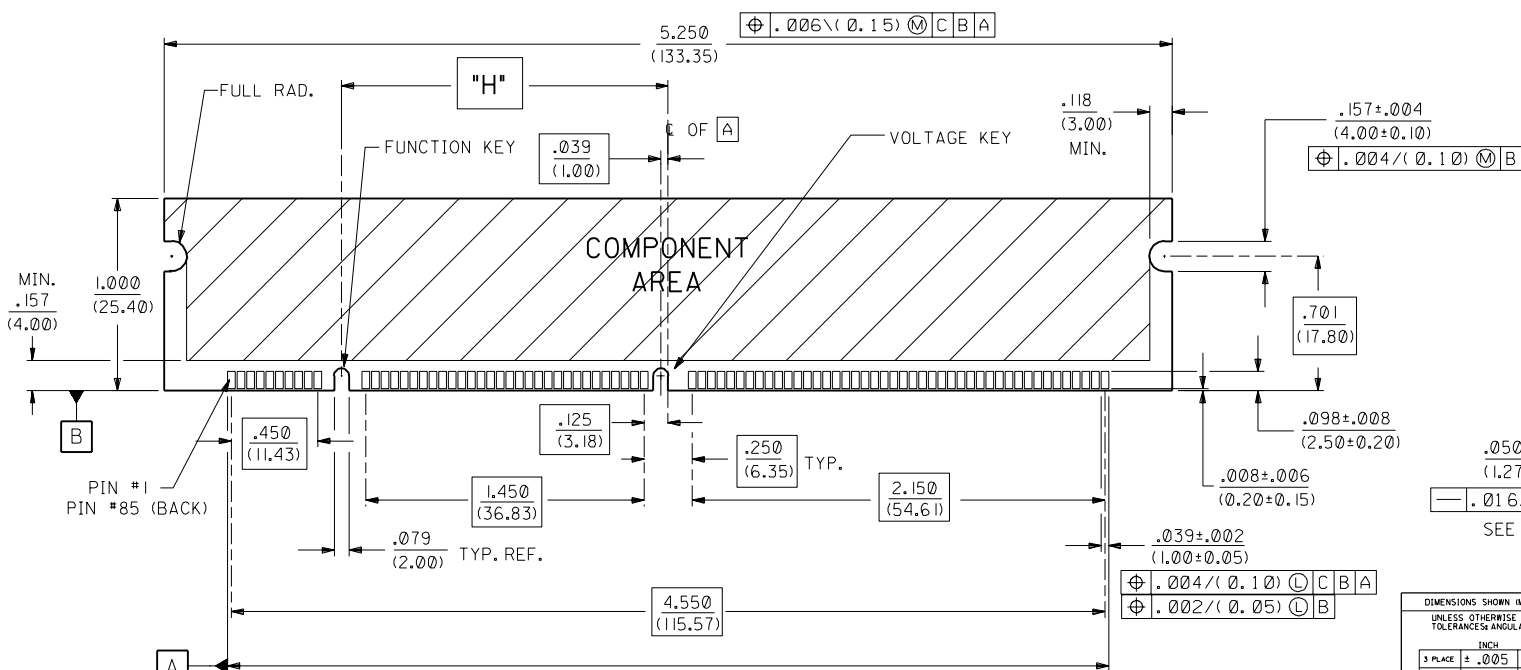
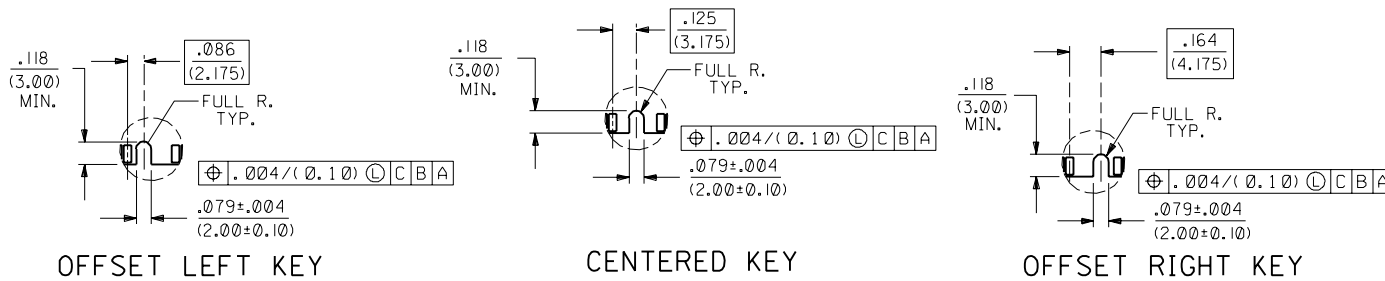
| | | | |
|--|---------------|-----------------------------|-----------------|
| DIMENSIONS SHOWN (METRIC) INCH UNLESS OTHERWISE SPECIFIED TOLERANCES: ANGULAR ± 1/2° | | REVISE ONLY ON CAD SYSTEM | |
| 3 PLACE ± .005 | INCH | TITLE | |
| 2 PLACE ± --- ± 0.13 | METRIC | .050/(1.27) PITCH MULTI-KEY | |
| 1 PLACE --- ± 0.25 | | 168 CKT DIMM RAM ASSY | |
| DRAFT WHERE APPLICABLE MUST REMAIN WITHIN DIMENSIONS | | 17.8mm LATCH SALES DWG | |
| DRWG. BY DCB | CHK'D. BY DCB | FILE NAME | SHEET NO. DATE |
| APP'D. BY DCB | SCALE 2:1 | ST125101 DGN | 1 OF 3 10/10/94 |
| PART NO. SDA-71251-0 | | DRWG. NO. SDA-71251-0 | |
| SEE CHART | | DIV. CP | |
| THIS DRAWING CONTAINS INFORMATION THAT IS PROPRIETARY TO MOLEX INC. AND SHOULD NOT BE USED WITHOUT WRITTEN PERMISSION. | | | |

RECOMMENDED P.C. BOARD HOLE PATTERN (CONNECTOR SIDE)

| PART NUMBER | COLOR | DESCRIPTION | FUNCTION KEY | VOLTAGE KEY | DIA. "A" | DIA. "B" | DIA. "C" | DIA. "D" | DIM. "H" | DIM. "P" | DIM. "S" | DIM. "T" | DIM. "W" | DIM. "X" | DIM. "Y" | DIM. "Z" | CONTACT AREA PLATING |
|-------------|-------|----------------------|--------------|-------------|--------------------------|----------|--|--|------------------|----------------|----------------|----------------|-----------------|----------------|----------------|-----------------|----------------------|
| 71251-0001 | BLACK | 3.3 VOLT STD DRAM | CENTER | CENTER | .080±.002 (2.03±0.05) | NONE | .093 +.003/-0.000 (2.36+0.08/-0.00) | .093 +.003/-0.000 (2.36+0.08/-0.00) | 1.700 (43.18) | .155 (3.94) | .020 (0.51) | .127 (3.23) | .970 (24.64) | .113 (2.87) | .250 (6.35) | .410 (10.41) | OPTION A |
| 71251-0004 | BLACK | 5.0 VOLT STD DRAM | CENTER | OFFSET LEFT | .080±.002 (2.03±0.05) | NONE | .093 +.003/-0.000 (2.36+0.08/-0.00) | .093 +.003/-0.000 (2.36+0.08/-0.00) | 1.700 (43.18) | .155 (3.94) | .020 (0.51) | .127 (3.23) | .970 (24.64) | .113 (2.87) | .250 (6.35) | .410 (10.41) | OPTION A |
| 71251-0012 | BLACK | 3.3 VOLT UNBUFFERED | OFFSET RIGHT | CENTER | .080±.002 (2.03±0.05) | NONE | .093 +.003/-0.000 (2.36+0.08/-0.00) | .093 +.003/-0.000 (2.36+0.08/-0.00) | 1.661 (42.19) | .155 (3.94) | .020 (0.51) | .127 (3.23) | .970 (24.64) | .113 (2.87) | .250 (6.35) | .410 (10.41) | OPTION A |
| 71251-0013 | BLACK | 5.0 VOLT UNBUFFERED | OFFSET RIGHT | OFFSET LEFT | .080±.002 (2.03±0.05) | NONE | .093 +.003/-0.000 (2.36+0.08/-0.00) | .093 +.003/-0.000 (2.36+0.08/-0.00) | 1.661 (42.19) | .155 (3.94) | .020 (0.51) | .127 (3.23) | .970 (24.64) | .113 (2.87) | .250 (6.35) | .410 (10.41) | OPTION A |
| 71251-0016 | BLACK | 3.3 VOLT SYNCHRONOUS | OFFSET LEFT | CENTER | .080±.002 (2.03±0.05) | NONE | .093 +.003/-0.000 (2.36+0.08/-0.00) | .093 +.003/-0.000 (2.36+0.08/-0.00) | 1.739 (44.17) | .155 (3.94) | .020 (0.51) | .127 (3.23) | .970 (24.64) | .113 (2.87) | .250 (6.35) | .410 (10.41) | OPTION A |
| 71251-0017 | BLACK | 5.0 VOLT SYNCHRONOUS | OFFSET LEFT | OFFSET LEFT | .080±.002 (2.03±0.05) | NONE | .093 +.003/-0.000 (2.36+0.08/-0.00) | .093 +.003/-0.000 (2.36+0.08/-0.00) | 1.739 (44.17) | .155 (3.94) | .020 (0.51) | .127 (3.23) | .970 (24.64) | .113 (2.87) | .250 (6.35) | .410 (10.41) | OPTION A |

NOTES:

1. STRAIGHTNESS OF MODULE APPLIES TO THE AREA FROM THE BOTTOM OF THE CARD UP .157/(4.00).
2. IF TIE BARS ARE ATTACHED TO PADS, THE TIE BAR SHOULD BE ON AN INTERNAL LAYER, SO THAT THE REMNANT CANNOT CAUSE DAMAGE TO THE CONTACTS.



| | |
|----|-------------|
| F3 | SEE SHEET I |
| F2 | SEE SHEET I |
| F1 | SEE SHEET I |
| F | SEE SHEET I |
| E1 | SEE SHEET I |
| E | SEE SHEET I |
| D2 | SEE SHEET I |
| D1 | SEE SHEET I |
| D | SEE SHEET I |
| C | SEE SHEET I |
| B1 | SEE SHEET I |
| B | SEE SHEET I |
| A | SEE SHEET I |

| | | | |
|---|--------|--|----------------|
| DIMENSIONS SHOWN (METRIC) INCH UNLESS OTHERWISE SPECIFIED TOLERANCES ANGULAR ± 1/2° | | TITLE .050/(1.27) PITCH MULTI-KEY 168 CKT DIMM RAM ASSY 17.8mm LATCH SALES DWG. | |
| 3 PLACE ± .005 | INCH | DATE | 10/10/94 |
| 2 PLACE ± .01 | METRIC | SHEET NO. | 2 |
| 1 PLACE --- ± 0.25 | | MOLEX INCORPORATED | |
| DRAFT WHERE APPLICABLE MUST REMAIN WITHIN DIMENSIONS | | L1SLEJLL 60532 U.S.A. | |
| DRWG. NO. | DCB | DRWG. NO. | SDA-71251-0... |
| CHK'D BY | DCB | FILE NAME | SEE CHART |
| APP'D BY | DCB | SCALE | 2: 1 |
| THIS DRAWING CONTAINS INFORMATION THAT IS PROPRIETARY TO MOLEX INC. AND SHOULD NOT BE USED WITHOUT WRITTEN PERMISSION. | | DIV. | CP |

| 13 | | 12 | | 11 | | 10 | | 9 | | 8 | | 7 | | 6 | | 71251 | | 4 | | 3 | | 2 | | 1 | |
|-------------|-------|----------------------|--------------|-------------|---|-------------------------------------|---|---|------------------|----------------|----------------|----------------|-----------------|----------------|----------------|-----------------|----------------------|---|--|---|--|---|--|---|----------|
| PART NUMBER | COLOR | DESCRIPTION | FUNCTION KEY | VOLTAGE KEY | DIA. "A" | DIA. "B" | DIA. "C" | DIA. "D" | DIM. "H" | DIM. "P" | DIM. "S" | DIM. "T" | DIM. "W" | DIM. "X" | DIM. "Y" | DIM. "Z" | CONTACT AREA PLATING | | | | | | | | |
| 71251-0001 | BLACK | 3.3 VOLT STD DRAM | SEE SHEET 2 | | | | | | | | | | | | | | | | | | | | | | OPTION A |
| 71251-0002 | BLACK | 3.3 VOLT STD DRAM | CENTER | CENTER | NONE | $\frac{.093 + .003}{(2.36 + 0.08)}$ | $\frac{.093 + .003}{(2.36 + 0.08)}$ | NONE | 1.700 (43.18) | .155 (3.94) | .020 (0.51) | .127 (3.23) | .970 (24.64) | .113 (2.87) | .250 (6.35) | .410 (10.41) | | | | | | | | | OPTION A |
| 71251-0003 | BLACK | 5.0 VOLT STD DRAM | CENTER | OFFSET LEFT | NONE | $\frac{.093 + .003}{(2.36 + 0.08)}$ | $\frac{.093 + .003}{(2.36 + 0.08)}$ | NONE | 1.700 (43.18) | .155 (3.94) | .020 (0.51) | .127 (3.23) | .970 (24.64) | .113 (2.87) | .250 (6.35) | .410 (10.41) | | | | | | | | | OPTION A |
| 71251-0004 | BLACK | 5.0 VOLT STD DRAM | SEE SHEET 2 | | | | | | | | | | | | | | | | | | | | | | OPTION A |
| 71251-0005 | BLACK | 5.0 VOLT UNBUFFERED | OFFSET RIGHT | OFFSET LEFT | $\frac{.080 \pm .002}{(2.03 \pm 0.05)}$ | NONE | NONE | $\frac{.080 \pm .002}{(2.03 \pm 0.05)}$ | 1.661 (42.19) | .125 (3.18) | .035 (0.89) | .102 (2.59) | .985 (25.02) | .128 (3.25) | .265 (6.73) | .425 (10.79) | | | | | | | | | OPTION A |
| 71251-0006 | BLACK | 5.0 VOLT STD DRAM | CENTER | OFFSET LEFT | $\frac{.080 \pm .002}{(2.03 \pm 0.05)}$ | NONE | $\frac{.093 + .003}{(2.36 + 0.08)}$ | $\frac{.080 \pm .002}{(2.03 \pm 0.05)}$ | 1.700 (43.18) | .155 (3.94) | .020 (0.51) | .127 (3.23) | .970 (24.64) | .113 (2.87) | .250 (6.35) | .410 (10.41) | | | | | | | | | OPTION A |
| 71251-0007 | BLACK | 3.3 VOLT STD DRAM | CENTER | CENTER | $\frac{.080 \pm .002}{(2.03 \pm 0.05)}$ | NONE | $\frac{.080 \pm .002}{(2.03 \pm 0.05)}$ | $\frac{.080 \pm .002}{(2.03 \pm 0.05)}$ | 1.700 (43.18) | .140 (3.56) | .020 (0.51) | .127 (3.23) | .970 (24.64) | .113 (2.87) | .250 (6.35) | .410 (10.41) | | | | | | | | | OPTION A |
| 71251-0008 | BLACK | 5.0 VOLT STD DRAM | CENTER | OFFSET LEFT | NONE | $\frac{.093 + .003}{(2.36 + 0.08)}$ | $\frac{.093 + .003}{(2.36 + 0.08)}$ | $\frac{.093 + .003}{(2.36 + 0.08)}$ | 1.700 (43.18) | .155 (3.94) | .020 (0.51) | .127 (3.23) | .970 (24.64) | .113 (2.87) | .250 (6.35) | .410 (10.41) | | | | | | | | | OPTION A |
| 71251-0009 | BLACK | 5.0 VOLT STD DRAM | CENTER | OFFSET LEFT | $\frac{.080 \pm .002}{(2.03 \pm 0.05)}$ | NONE | NONE | $\frac{.080 \pm .002}{(2.03 \pm 0.05)}$ | 1.700 (43.18) | .125 (3.18) | .035 (0.89) | .102 (2.59) | .985 (25.02) | .128 (3.25) | .265 (6.73) | .425 (10.79) | | | | | | | | | OPTION A |
| 71251-0010 | BEIGE | 3.3 VOLT STD DRAM | CENTER | CENTER | $\frac{.080 \pm .002}{(2.03 \pm 0.05)}$ | NONE | NONE | $\frac{.080 \pm .002}{(2.03 \pm 0.05)}$ | 1.700 (43.18) | .125 (3.18) | .035 (0.89) | .112 (2.84) | .985 (25.02) | .128 (3.25) | .265 (6.73) | .425 (10.79) | | | | | | | | | OPTION A |
| 71251-0011 | BLACK | 3.3 VOLT STD DRAM | CENTER | CENTER | $\frac{.093 + .003}{(2.36 + 0.08)}$ | NONE | $\frac{.093 + .003}{(2.36 + 0.08)}$ | $\frac{.093 + .003}{(2.36 + 0.08)}$ | 1.700 (43.18) | .155 (3.94) | .020 (0.51) | .127 (3.23) | .970 (24.64) | .113 (2.87) | .250 (6.35) | .410 (10.41) | | | | | | | | | OPTION A |
| 71251-0012 | BLACK | 3.3 VOLT UNBUFFERED | SEE SHEET 2 | | | | | | | | | | | | | | | | | | | | | | OPTION A |
| 71251-0013 | BLACK | 5.0 VOLT UNBUFFERED | SEE SHEET 2 | | | | | | | | | | | | | | | | | | | | | | OPTION A |
| 71251-0014 | BLACK | 3.3 VOLT UNBUFFERED | OFFSET RIGHT | CENTER | $\frac{.080 \pm .002}{(2.03 \pm 0.05)}$ | NONE | NONE | $\frac{.080 \pm .002}{(2.03 \pm 0.05)}$ | 1.661 (42.19) | .125 (3.18) | .035 (0.89) | .112 (2.84) | .985 (25.02) | .128 (3.25) | .265 (6.73) | .425 (10.79) | | | | | | | | | OPTION A |
| 71251-0015 | BLACK | 3.3 VOLT STD DRAM | CENTER | CENTER | $\frac{.080 \pm .002}{(2.03 \pm 0.05)}$ | NONE | $\frac{.093 + .003}{(2.36 + 0.08)}$ | $\frac{.093 + .003}{(2.36 + 0.08)}$ | 1.700 (43.18) | .155 (3.94) | .020 (0.51) | .117 (2.97) | .970 (24.64) | .113 (2.87) | .250 (6.35) | .410 (10.41) | | | | | | | | | OPTION A |
| 71251-0016 | BLACK | 3.3 VOLT SYNCHRONOUS | SEE SHEET 2 | | | | | | | | | | | | | | | | | | | | | | OPTION A |
| 71251-0017 | BLACK | 5.0 VOLT SYNCHRONOUS | SEE SHEET 2 | | | | | | | | | | | | | | | | | | | | | | OPTION A |
| 71251-0018 | BLACK | 3.3 VOLT UNBUFFERED | OFFSET RIGHT | CENTER | $\frac{.093 + .003}{(2.36 + 0.08)}$ | NONE | $\frac{.093 + .003}{(2.36 + 0.08)}$ | $\frac{.093 + .003}{(2.36 + 0.08)}$ | 1.661 (42.19) | .140 (3.56) | .035 (0.89) | .102 (2.59) | .985 (25.02) | .128 (3.25) | .265 (6.73) | .425 (10.79) | | | | | | | | | OPTION A |
| 71251-0019 | BLACK | 5.0 VOLT STD DRAM | CENTER | OFFSET LEFT | NONE | $\frac{.093 + .003}{(2.36 + 0.08)}$ | $\frac{.093 + .003}{(2.36 + 0.08)}$ | NONE | 1.700 (43.18) | .155 (3.94) | .020 (0.51) | .127 (3.23) | .970 (24.64) | .113 (2.87) | .250 (6.35) | .410 (10.41) | | | | | | | | | OPTION B |
| 71251-0020 | BLACK | 3.3 VOLT STD DRAM | CENTER | CENTER | $\frac{.080 \pm .002}{(2.03 \pm 0.05)}$ | NONE | $\frac{.080 \pm .002}{(2.03 \pm 0.05)}$ | $\frac{.080 \pm .002}{(2.03 \pm 0.05)}$ | 1.700 (43.18) | .140 (3.56) | .020 (0.51) | .127 (3.23) | .970 (24.64) | .113 (2.87) | .250 (6.35) | .410 (10.41) | | | | | | | | | OPTION B |
| 71251-0021 | BLACK | 3.3 VOLT STD DRAM | CENTER | CENTER | $\frac{.080 \pm .002}{(2.03 \pm 0.05)}$ | NONE | $\frac{.093 + .003}{(2.36 + 0.08)}$ | $\frac{.093 + .003}{(2.36 + 0.08)}$ | 1.700 (43.18) | .155 (3.94) | .020 (0.51) | .127 (3.23) | .970 (24.64) | .113 (2.87) | .250 (6.35) | .410 (10.41) | | | | | | | | | OPTION B |
| 71251-0022 | BLACK | 3.3 VOLT UNBUFFERED | OFFSET RIGHT | CENTER | $\frac{.080 \pm .002}{(2.03 \pm 0.05)}$ | NONE | $\frac{.093 + .003}{(2.36 + 0.08)}$ | $\frac{.093 + .003}{(2.36 + 0.08)}$ | 1.661 (42.19) | .155 (3.94) | .020 (0.51) | .127 (3.23) | .970 (24.64) | .113 (2.87) | .250 (6.35) | .410 (10.41) | | | | | | | | | OPTION B |
| 71251-0023 | BLACK | 3.3 VOLT UNBUFFERED | OFFSET RIGHT | CENTER | $\frac{.080 \pm .002}{(2.03 \pm 0.05)}$ | NONE | NONE | $\frac{.080 \pm .002}{(2.03 \pm 0.05)}$ | 1.661 (42.19) | .125 (3.18) | .035 (0.89) | .102 (2.59) | .985 (25.02) | .128 (3.25) | .265 (6.73) | .425 (10.79) | | | | | | | | | OPTION A |
| 71251-0024 | BLACK | 3.3 VOLT UNBUFFERED | OFFSET RIGHT | CENTER | $\frac{.080 \pm .002}{(2.03 \pm 0.05)}$ | NONE | $\frac{.093 + .003}{(2.36 + 0.08)}$ | $\frac{.093 + .003}{(2.36 + 0.08)}$ | 1.661 (42.19) | .155 (3.94) | .020 (0.51) | .105 (2.67) | .970 (24.64) | .113 (2.87) | .250 (6.35) | .410 (10.41) | | | | | | | | | OPTION A |
| 71251-0026 | BEIGE | 3.3 VOLT STD DRAM | CENTER | CENTER | $\frac{.080 \pm .002}{(2.03 \pm 0.05)}$ | NONE | NONE | $\frac{.080 \pm .002}{(2.03 \pm 0.05)}$ | 1.700 (43.18) | .125 (3.18) | .035 (0.89) | .090 (2.29) | .985 (25.02) | .128 (3.25) | .265 (6.73) | .425 (10.79) | | | | | | | | | OPTION A |
| 71251-0027 | BLACK | 3.3 VOLT SYNCHRONOUS | OFFSET LEFT | CENTER | NONE | $\frac{.093 + .003}{(2.36 + 0.08)}$ | $\frac{.093 + .003}{(2.36 + 0.08)}$ | NONE | 1.739 (44.17) | .155 (3.94) | .020 (0.51) | .127 (3.23) | .970 (24.64) | .113 (2.87) | .250 (6.35) | .410 (10.41) | | | | | | | | | OPTION A |

| | | | | | | | | | | | | | | | | | | | |
|---|--|--|--|--|--|--|--|--|--|---|--|--|--|--|--|--|--|--|--|
| DIMENSIONS SHOWN (METRIC) INCH UNLESS OTHERWISE SPECIFIED TOLERANCES ANGULAR ± 1/2° | | | | | | | | | | REVISE ONLY ON CAD SYSTEM | | | | | | | | | |
| INCH METRIC | | | | | | | | | | TITLE .050/(1.27) PITCH MULTI-KEY 168 CKT DIMM RAM ASSY 17.8mm LATCH SALES DWG. | | | | | | | | | |
| 3 PLACE ± .005 | | | | | | | | | | PART NO. 71251-0001 | | | | | | | | | |
| 2 PLACE ± .01 ± 0.13 | | | | | | | | | | MOLEX INCORPORATED SHEET NO. 3 DATE 12/07/95 | | | | | | | | | |
| 1 PLACE --- ± 0.25 | | | | | | | | | | DRAWN BY: DCB | | | | | | | | | |
| DRAFT WHERE APPLICABLE MUST REMAIN WITHIN DIMENSIONS | | | | | | | | | | SCALE: 2:1 | | | | | | | | | |
| H SEE SHEET 1 | | | | | | | | | | FILE NAME: S7125103.DWG | | | | | | | | | |
| F3 SEE SHEET 1 | | | | | | | | | | DIV. CP | | | | | | | | | |
| LTR. REVISIONS | | | | | | | | | | THIS DRAWING CONTAINS INFORMATION THAT IS PROPRIETARY TO MOLEX INC. AND SHOULD NOT BE USED WITHOUT WRITTEN PERMISSION | | | | | | | | | |