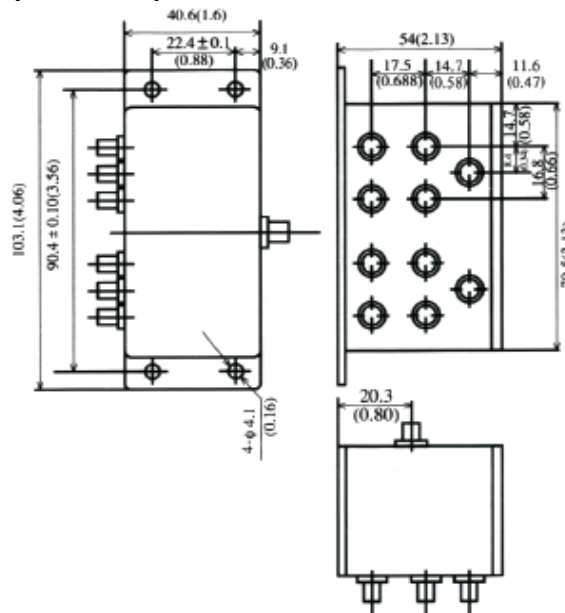


## 10-Way Power Divider

P/N: JXWBGF-T-10-5-500-B33

Frequency Range(MHz)	5-500
Insertion Loss(dB)	L: 0.5/1.0 Typ/Max
	M: 0.4/2.0 Typ/Max
	U: 1.8/2.5Typ/Max
Isolation(dB)	L: 30/20 Typ/Min
	M: 30/20 Typ/Min
	U: 25/20 Typ/Min
Phase Unbalance(°)	8 max
Amplitude Unbalance(dB)	0.6 max
Connector	BNC-Female
Operating Temperature(°C)	-40 ~ +80
Storage Temperature(°C)	-55 ~ +85

### Outline Drawing (Size: mm)



For current data sheets, please contact: [sales@aacix.com](mailto:sales@aacix.com)