

PLEASE CHECK WWW.MOLEX.COM FOR LATEST PART INFORMATION

Part Number: [0510060400](#)
Status: **Active**
Description: 2.00mm (.079") Pitch Wire-to-Wire Plug Housing, 4 Circuits

Documents:

[3D Model](#) [Product Specification PS-51005-001 \(PDF\)](#)
[Drawing \(PDF\)](#) [RoHS Certificate of Compliance \(PDF\)](#)

Agency Certification

CSA LR19980
 UL E29179

General

Product Family Crimp Housings
 Series [51006](#)
 MolexKits Yes
 Product Name N/A

Physical

Circuits (maximum) 4
 Color - Resin Natural
 Flammability 94V-0
 Gender Male
 Glow-Wire Compliant No
 Lock to Mating Part None
 Material - Resin Polyester
 Number of Rows 1
 Packaging Type Bag
 Panel Mount No
 Pitch - Mating Interface (in) 0.079 In
 Pitch - Mating Interface (mm) 2.00 mm
 Stackable No
 Temperature Range - Operating -40°C to +105°C

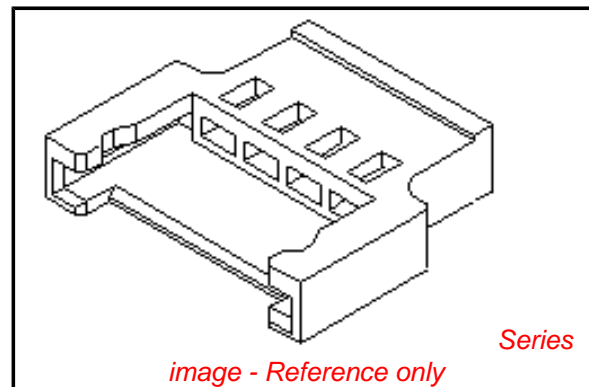
Electrical

Current - Maximum per Contact 2A

Material Info

Reference - Drawing Numbers

Product Specification PS-51005-001
 Sales Drawing SD-51006-001



EU RoHS

**ELV and RoHS
 Compliant**
**REACH SVHC
 Contains SVHC: No**
**Halogen-Free
 Status**

China RoHS



Not Halogen-Free
**Need more information on product
 environmental compliance?**

Email productcompliance@molex.com
 For a multiple part number RoHS Certificate of
 Compliance, [click here](#)

Please visit the [Contact Us](#) section for any
 non-product compliance questions.

Search Parts in this Series

[51006Series](#)

Mates With

[51005 female housing](#)

Use With

[50012](#)

10 9 8 7 6 5 4 3 2 1

F

E

D

C

B

A

F

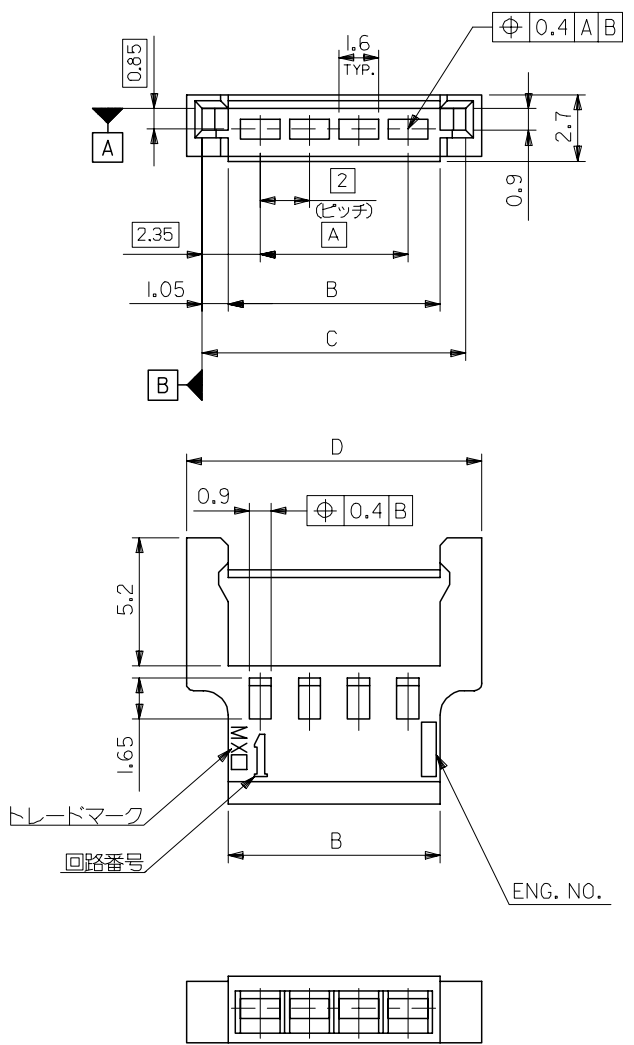
E

D

C

B

A



注記

1. 嵌合相手 : 51005
MATE WITH : 51005
2. 適合ターミナル : 50012
APPLICABLE TERMINAL : 50012
3. ELV 及び RoHS 適合品
ELV AND RoHS COMPLIANT.

| | | | | | |
|----|------|------|---|--------------|----|
| 14 | 12.7 | 10.6 | 8 | 51006-0500 | 5 |
| 12 | 10.7 | 8.6 | 6 | ↑ - 0400 | 4 |
| 10 | 8.7 | 6.6 | 4 | ↓ - 0300 | 3 |
| 8 | 6.7 | 4.6 | 2 | 51006-0200 | 2 |
| D | C | B | A | MATERIAL NO. | 極数 |

MATERIAL
PBTP (UL94V-0)

| | | | | | | | |
|---|---------------------------------------|--|----------------------------|-------------------|---|------------------------|------------------------|
| REVISED EC NO: J2008-0075 DRWN: NABEI 2007/07/16 CHKD: THARUYAMA 2007/07/17 APPR: NUKITA 2007/07/17 | GENERAL TOLERANCES (UNLESS SPECIFIED) | | DIMENSION STYLE MM ONLY | | SCALE 5:1 | DESIGN UNITS METRIC | THIRD ANGLE PROJECTION |
| | 10 UNDER | ± 0.2 | DRAWN BY S. MOCHIZUKI | DATE '89/08/22 | TITLE 2.0 WIRE TO WIRE CONN. PLUG HOUSING | | |
| | 10 OVER 30 UNDER | ± 0.25 | CHECKED BY H. H. | DATE '90/05/16 | MOLEX INCORPORATED | | |
| | 30 OVER | ± 0.3 | APPROVED BY M. ENOMOTO | DATE '90/05/16 | DOCUMENT NO. SD-51006-001 | | |
| | ANGULAR | ± 3 ° | MATERIAL NO. SEE TABLE | | SHEET NO. 1 OF 1 | | |
| DRAFT WHERE APPLICABLE MUST REMAIN WITHIN DIMENSIONS | | THIS DRAWING CONTAINS INFORMATION THAT IS PROPRIETARY TO MOLEX INCORPORATED AND SHOULD NOT BE USED WITHOUT WRITTEN PERMISSION | | | | | |