

**PLEASE CHECK WWW.MOLEX.COM FOR LATEST PART INFORMATION**

**Part Number:** **0781206013**  
**Status:** **Active**  
**Description:** 1.27mm (.050") Pitch Wire-to-Board Receptacle, Dual Row, Vertical, SMT, 0.25µm (10µ") Gold (Au) Plating, without Kapton Tape, 60 Circuits, Tube, Lead free

**Documents:**

[3D Model](#) [Product Specification PS-87933-001 \(PDF\)](#)  
[Drawing \(PDF\)](#) [RoHS Certificate of Compliance \(PDF\)](#)

**General**

Product Family PCB Receptacles  
 Series [78120](#)  
 Application Wire-to-Board  
 Product Name N/A

**Physical**

Circuits (Loaded) 60  
 Circuits (maximum) 60  
 Color - Resin Black  
 Durability (mating cycles max) 100  
 Glow-Wire Compliant No  
 Guide to Mating Part No  
 Keying to Mating Part None  
 Lock to Mating Part None  
 Material - Metal Phosphor Bronze  
 Material - Plating Mating Gold  
 Material - Plating Termination Nickel  
 Material - Resin High Temperature Thermoplastic  
 Number of Rows 2  
 Orientation Vertical  
 PCB Locator No  
 PCB Retention None  
 Packaging Type Tube  
 Pitch - Mating Interface (in) 0.050 In  
 Pitch - Mating Interface (mm) 1.27 mm  
 Pitch - Term. Interface (in) 0.050 In  
 Pitch - Term. Interface (mm) 1.27 mm  
 Plating min: Mating (µin) 10  
 Plating min: Mating (µm) 0.25  
 Plating min: Termination (µin) 50  
 Plating min: Termination (µm) 1.27  
 Polarized to PCB No  
 Stackable No  
 Temperature Range - Operating -55°C to +105°C  
 Termination Interface: Style Surface Mount

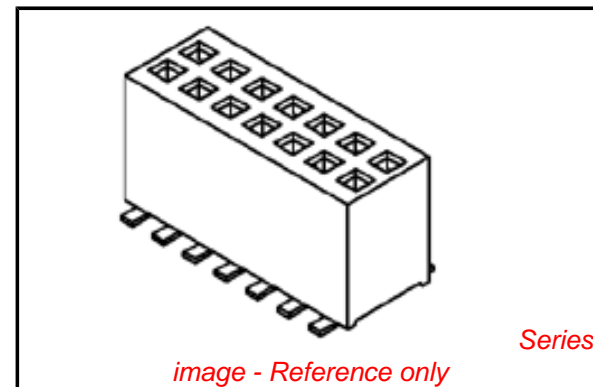
**Electrical**

Current - Maximum per Contact 1.75A  
 Voltage - Maximum 125V

**Solder Process Data**

Duration at Max. Process Temperature (seconds) 10  
 Lead-free Process Capability Reflow Capable (SMT only)  
 Max. Cycles at Max. Process Temperature 3  
 Process Temperature max. C 260

**Material Info**



**EU RoHS**

**ELV and RoHS Compliant**  
**REACH SVHC**  
**Contains SVHC: No**  
**Halogen-Free Status**

**China RoHS**



**Need more information on product environmental compliance?**

Email [productcompliance@molex.com](mailto:productcompliance@molex.com)  
 For a multiple part number RoHS Certificate of Compliance, [click here](#)

Please visit the [Contact Us](#) section for any non-product compliance questions.

**Search Parts in this Series**

[78120Series](#)

**Mates With**

[87932](#) , [87933](#) , [87934](#) Wire-to-Board Headers

**Reference - Drawing Numbers**

Product Specification  
Sales Drawing

PS-87933-001  
SD-78120-007

This document was generated on 03/18/2010

**PLEASE CHECK [WWW.MOLEX.COM](http://WWW.MOLEX.COM) FOR LATEST PART INFORMATION**

10 9 8 7 6 5 4 3 2 1

F

E

D

C

B

A

F

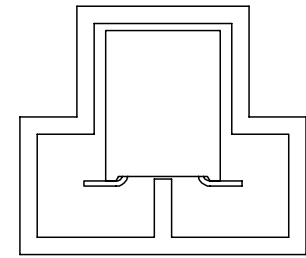
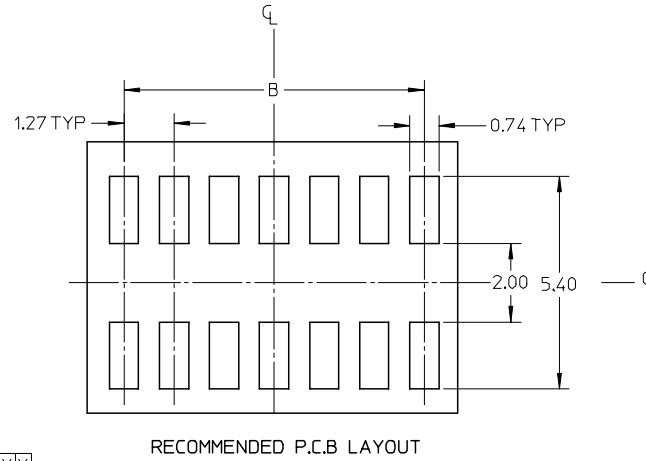
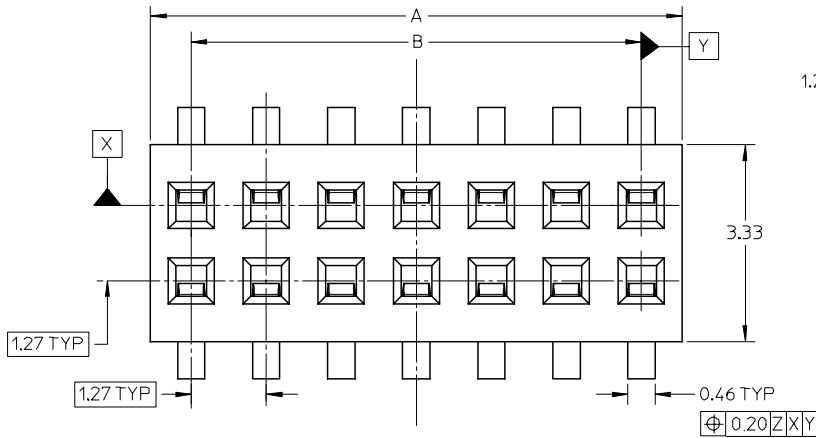
E

D

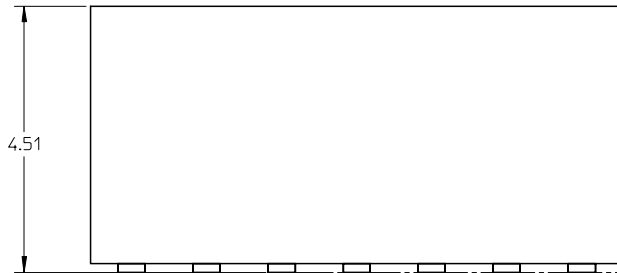
C

B

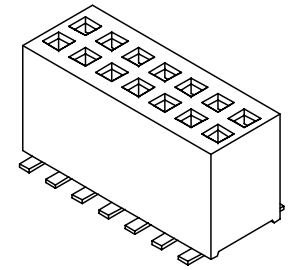
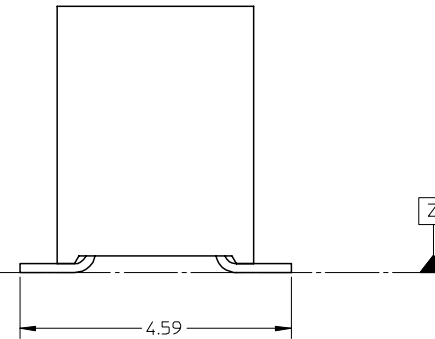
A



PART PACKED IN TUBE



0.15



NOTE:

1. MATERIAL: HOUSING: LCP GLASS FILLED.  
COLOR: BLACK  
TERMINAL: PHOSPHOR BRONZE WITH 0.25μm GOLD  
AT CONTACT AREA OVER 1.27mm  
NICKEL UNDERPLATE.
2. PIN PUSHOUT FORCE: 0.4KG MIN
3. THE ABOVE 14 CKT SHOWN IS FOR ILLUSTRATION ONLY.
4. PARTS TO BE PACKED IN TUBE.
5. PRODUCT SPECIFICATION PS-87933-001 APPLIES.
6. THIS PART IS TO BE MATED WITH 87932, 87933 OR 87934 SERIES
7. PACKAGING SPECIFICATION REFER TO PK-89990-576

ADD OPTION PART# A2	EC NO: S2008-0097	2007/09/05	QUALITY SYMBOLS ▽=0 ∇=0
	DRWN: CWLAM	2007/09/19	
	CHKD: KWLEE	2007/09/27	
	APPR: KWLEE	2007/09/27	
REV	DESCRIPTION		

GENERAL TOLERANCES (UNLESS SPECIFIED)	
mm	INCH
4 PLACES ± ---	± ---
3 PLACES ± ---	± ---
2 PLACES ± 0.15	± ---
1 PLACE ± ---	± ---
ANGULAR ± 1 °	
DRAFT WHERE APPLICABLE MUST REMAIN WITHIN DIMENSIONS	

DIMENSION STYLE MM ONLY	
DRAWN BY	DATE
CWLAM	2007/02/16
CHECKED BY	DATE
KWLEE	2007/02/27
APPROVED BY	DATE
KWLEE	2007/02/27
MATERIAL NO.	
SIZE	SEE TABLE
A3	

SCALE NTS	DESIGN UNITS METRIC	THIRD ANGLE PROJECTION
TITLE 1.27MM PITCH, DUAL ROW RECEPTACLE, SMT		
MOLEX INCORPORATED		
DOCUMENT NO. SD-78120-007	SHEET NO. 1 OF 2	
THIS DRAWING CONTAINS INFORMATION THAT IS PROPRIETARY TO MOLEX INCORPORATED AND SHOULD NOT BE USED WITHOUT WRITTEN PERMISSION		

9 8 7 6 5 4 3 2 1

	10	9	8	7	6	5	4	3	2	1	
	P/N PACKED IN TUBE		CKT SIZE	KAPTON TAPE	DIMENSION						
					A	B					
F	78120-0813		08	NO	5.19	3.81					
	78120-1013		10	NO	6.46	5.08					
	78120-2013		20	NO	12.81	11.43					
	78120-3013		30	NO	19.16	17.78					
	78120-4013		40	NO	25.51	24.13					
E	78120-5013		50	NO	31.86	30.48					
	78120-6013		60	NO	38.21	36.83					
	78120-6813		68	NO	43.29	41.91					
	78120-7013		70	NO	44.56	43.18					
	78120-8013		80	NO	50.91	49.53					
	78120-9013		90	NO	57.26	55.88					
D	78120-0013		100	NO	63.61	62.23					

ADD OPTION PART# EC NO: S2008-0097 DRWN: CWLAM CHKD: KWLEE APPR: KWLEE	2007/09/05 2007/09/19 2007/09/27	DESCRIPTION REV	QUALITY SYMBOLS	GENERAL TOLERANCES (UNLESS SPECIFIED)	DIMENSION STYLE	SCALE	DESIGN UNITS	THIRD ANGLE PROJECTION																		
			$\nabla = 0$ $\triangle = 0$	<table border="1"> <thead> <tr> <th></th> <th>mm</th> <th>INCH</th> </tr> </thead> <tbody> <tr> <td>4 PLACES</td> <td>± ---</td> <td>± ---</td> </tr> <tr> <td>3 PLACES</td> <td>± ---</td> <td>± ---</td> </tr> <tr> <td>2 PLACES</td> <td>± 0.15</td> <td>± ---</td> </tr> <tr> <td>1 PLACE</td> <td>± ---</td> <td>± ---</td> </tr> <tr> <td colspan="3">ANGULAR ± 1 °</td> </tr> </tbody> </table>		mm	INCH	4 PLACES	± ---	± ---	3 PLACES	± ---	± ---	2 PLACES	± 0.15	± ---	1 PLACE	± ---	± ---	ANGULAR ± 1 °			MM ONLY	NTS	METRIC	
				mm	INCH																					
			4 PLACES	± ---	± ---																					
			3 PLACES	± ---	± ---																					
2 PLACES	± 0.15	± ---																								
1 PLACE	± ---	± ---																								
ANGULAR ± 1 °																										
	<table border="1"> <thead> <tr> <th>DRAWN BY</th> <th>DATE</th> <th>TITLE</th> </tr> </thead> <tbody> <tr> <td>CWLAM</td> <td>2007/02/16</td> <td rowspan="2">1.27MM PITCH, DUAL ROW RECEPTACLE, SMT</td> </tr> <tr> <td>CHECKED BY</td> <td>DATE</td> </tr> <tr> <td>KWLEE</td> <td>2007/02/27</td> <td></td> </tr> <tr> <td>APPROVED BY</td> <td>DATE</td> <td></td> </tr> <tr> <td>KWLEE</td> <td>2007/02/27</td> <td></td> </tr> </tbody> </table>	DRAWN BY	DATE	TITLE	CWLAM	2007/02/16	1.27MM PITCH, DUAL ROW RECEPTACLE, SMT	CHECKED BY	DATE	KWLEE	2007/02/27		APPROVED BY	DATE		KWLEE	2007/02/27					MOLEX INCORPORATED				
DRAWN BY	DATE	TITLE																								
CWLAM	2007/02/16	1.27MM PITCH, DUAL ROW RECEPTACLE, SMT																								
CHECKED BY	DATE																									
KWLEE	2007/02/27																									
APPROVED BY	DATE																									
KWLEE	2007/02/27																									