

**PLEASE CHECK WWW.MOLEX.COM FOR LATEST PART INFORMATION**

**Part Number:** [1120160018](#)  
**Status:** **Active**  
**Description:** BradCommunications™ SST™ PROFIBUS Scanner for Allen-Bradley ControlLogix, includes Remote Link Library

**Documents:**

[Drawing \(PDF\)](#) [RoHS Certificate of Compliance \(PDF\)](#)

**General**

Product Family	Network Interface
Series	<a href="#">112016</a>
Approvals	CE, Class 1 Division 2
Communication Speed	12 Mbps
Mounting Style	N/A
Product Name	SST™
Protocol	Profibus* DP
Type	PLC Module

**Physical**

Channels	1
Interface	Profibus*
Network Connection Type	Profibus* D-Sub Female (9 pin)
Packaging Type	Carton
Processor	Freescale MCF5772
Temperature Range - Operating	0°C to +60°C

**Electrical**

Current - Maximum Input	5.5W
EMC	EN 55022 Class B, EN 61000-3-2, EN 61000-3-3, EN 61000-6-2
Supply Voltage	N/A

**Material Info**

Old Part Number	SST-PB3-CLX-RLL
-----------------	-----------------

**Reference - Drawing Numbers**

Sales Drawing	E-112016-0018
---------------	---------------

**EU RoHS**

**ELV and RoHS  
Compliant**  
**REACH SVHC  
Not Reviewed**  
**Halogen-Free  
Status  
Not Reviewed**

**China RoHS**



**Need more information on product environmental compliance?**

Email [productcompliance@molex.com](mailto:productcompliance@molex.com)  
 For a multiple part number RoHS Certificate of Compliance, [click here](#)

Please visit the [Contact Us](#) section for any non-product compliance questions.

**Search Parts in this Series**

[112016Series](#)



The BradCommunications™ SST Profibus communication module connects your Rockwell ControlLogix® controller to PROFIBUS DP network.

30 Oct. 09  
DW200588

## PROFIBUS® DP Master/Slave

For the Rockwell ControlLogix® Controller

### Features

- **Enhanced design!**
  - 100% backward compatible with previous generation (SST-PFB-CLX)
  - Up to 2 times faster
  - Easier to change module's configuration with PLC in RUN mode
  - Runs without ladder code
  - Module can "Set Slave" address
  - Dynamically add/remove Profibus slaves from scan list
- Remote Configuration and diagnostic through RSLinx®
- Profibus modules can be used in Local or Remote (through CIP networks) Racks
- Certified PROFIBUS ComMDTM driver for FDT Frame engineering tools
- Provides user-defined data space up to 1984 Bytes Input and 1968 Bytes Output
- Supports all PROFIBUS baud rates including 45.45 kbps
- Manages DP-V1 Services
- Simultaneous operation of PROFIBUS DP Master and Slave
- Multiple SST-PB3-CLX-RLL modules can be used in one CLX rack



### Overview

The BradCommunications™ SST™ Profibus® module connects your Rockwell ControlLogix® controller to Profibus as a master or slave to scan or emulate PROFIBUS DP I/O. With the new user-defined data space of 1984 Bytes Input and 1968 Bytes Output, the BradCommunications™ SST™ Profibus module provides a cost efficient solution to connect the ControlLogix CPU with large PROFIBUS networks.

### Remote Link Library

The Remote Link Library software provides added functionality to the BradCommunications SST Profibus module by allowing you to remotely monitor or download changes to your Profibus configuration. This is done by routing data from the BradCommunications SST Profibus DP Master Configuration software through Rockwell Automation's RSLinx software via Ethernet to the Allen-Bradley ControlLogix backplane. The Profibus Scanner can be used on a Local Rack or on a Remote Rack through CIP networks like EtherNet/IP or ControlNet

### ComMDTM Driver for FDT Tools

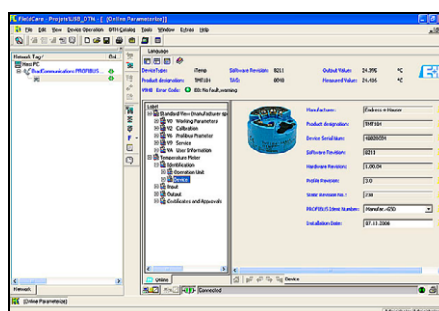
By purchasing SST-PB3-CLX-DTM part number, you will get the driver license to use the certified ComMDTM driver conforms to FDT v1.2 specifications. It is the ideal solution for connecting FDT engineering tools such as PACTware™ or FieldCare™ to PROFIBUS. It allows the linking with Device DTMs for the configuration and diagnostics with DP-V1 devices including Profibus PA field instruments.

### Protocols

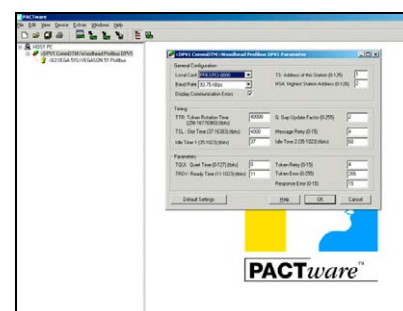
- PROFIBUS DP-V0 Master Class 1&2
- PROFIBUS DP-V1 Master Class 1&2
- PROFIBUS DP-V0 Slave

### Typical Applications

- Chemical or pharmaceutical application running PROFIBUS PA
- Machine builder application with high-speed control requirements



- Fieldcare Screenshot -



- Pactware Screenshot -

**BradCommunications™**

**Woodhead**

# PROFIBUS® DP Scanner



## Diagnostic & Software Tools

### Configuration Software

- Supports downloading and uploading configuration files through Serial or Ethernet port
- Browse your DP network for slave devices you want to include in your DP Master configuration using the DPView component

### Scanner Software

- Maintains slave status, diagnostic status information on all slaves, network diagnostic counters, and DP Master diagnostic counters
- Maintains network and I/O module status information including:
  - Active Slave Station Bit table
  - Configured Slave Station Bit table
  - Network diagnostic counters
  - DP Master diagnostic counters

### Diagnostic

- Built-in 4 character display
- COMM, SYS and OK LEDs provide immediate notification of network and system errors

### Other PROFIBUS® Products

- PROFIBUS modules for Allen-Bradley® SLC™ 500
- PROFIBUS USB Adapter supporting CommDTM / FDT Version 1.2
- PROFIBUS network interface cards (PCIe, PCI, C-PCI, PC/104, ISA, VME) inclusive DLL, OPC, ActiveX...
- Full metal PROFIBUS connector
  - IDC-technique provides quick and error-free connection
  - Optional diagnostic LED reduces downtime

## Network Specifications

Protocol	<ul style="list-style-type: none"> <li>• PROFIBUS DP-V0 Master, class 1&amp;2</li> <li>• PROFIBUS DP-V1 Master, class 1&amp;2</li> <li>• PROFIBUS DP-V0 Slave (up to 122 words of input data and 122 words of output data as slave)</li> </ul>
LAN Controller	• Siemens ASPC2
Slaves Supported	• Maximum of 125
I/O per Slave	• Maximum of 244 bytes in/out
I/O Mapping (for ControlLogix)	<ul style="list-style-type: none"> <li>• Maximum 1984 bytes input data</li> <li>• Maximum 1968 bytes output data</li> <li>• 250 words status</li> </ul>
Data Rate	• All Profibus data rates up to 12 Mbps
Cable	<ul style="list-style-type: none"> <li>• Belden 3079A</li> <li>• Brad Harrison® 85-0001 PVR2 conductor with shield, UL-listed</li> </ul>
Connector	• DB9 female connector

## Hardware Specifications

Bus Interface	Allen-Bradley® ControlLogix® 5000
Processor	Freescale MCF5272
Memory	<ul style="list-style-type: none"> <li>• 8MB of local MCF5272 RAM</li> <li>• 512 KB of onboard shared memory</li> <li>• 512 KB of sectored flash memory for storage of program and configuration data</li> </ul>
Diagnostics	Built-in 4 character display 3 LEDs indicate: <ol style="list-style-type: none"> <li>1. Health of the Profibus network (COMM)</li> <li>2. Communication status with Profibus slaves (SYS)</li> <li>3. that initialization is complete and the module is ok (OK)</li> </ol>
Backplane Current Consumption	850 mA @ 5V or 1.75 mA @ 24V
Operating Temperature	0°C (32°F) up to +60°C (140°F)
Storage Temperature	-40°C (-40F) up to +85°C (185F)
RoHS Compliant	Yes
MTBF	81.2 years

## Ordering Information

Part Number	SAP	Description
SST-PB3-CLX-RLL	1120160018	BradCommunications™ SST™ PROFIBUS Scanner for Allen-Bradley ControlLogix, includes Remote Link Library
SST-PB3-CLX-DTM	1120160019	BradCommunications™ SST™ PROFIBUS Scanner for Allen-Bradley ControlLogix, includes Remote Link Library and CommDTM driver license
SST-PB3-CLX-DTS	1120160020	BradCommunications™ SST™ CommDTM update driver license for PROFIBUS Scanner

To contact us: [www.woodhead.com](http://www.woodhead.com)

North America: US: + 1 800 225 7724 – Canada: +1 519 725 5136

Europe: France: +33 2 32 96 04 20 – Germany: +49 7252 94 96 0 – Italy: +39 010 59 30 77 –

United Kingdom +44 1495 356300

Asia: Shanghai, China: +86 21-5835-9885 – Tianjin, China: +86 22-23321717

Singapore: +65 6268-6868 – Yamato, Japan: +81 46-265-2428 – Nagoya, Japan: +81 52-221-5950

**Brad**<sup>®</sup>  
from **molex**