

PLEASE CHECK WWW.MOLEX.COM FOR LATEST PART INFORMATION

Part Number: [0040062005](#)
Status: **Active**
Description: Panel Grounding Clip Crimp Terminal 42172, 16-18 AWG, 301 Stainless Steel, 1.27mm (.050") Panel Thickness

Documents:

[3D Model](#) [RoHS Certificate of Compliance \(PDF\)](#)
[Drawing \(PDF\)](#)

Agency Certification

CSA LR19980
 UL E126412

General

Product Family Crimp Terminals
 Series [42172](#)
 Comments (2) 18 AWG, or (1) 18 and (1) 16 AWG
 Crimp Quality Equipment Yes
 Product Name Panel Grounding Clip

Physical

Gender Female
 Material - Metal Stainless Steel
 Material - Plating Mating Unplated
 Packaging Type Reel
 Termination Interface: Style Crimp or Compression
 Wire Insulation Diameter 3.00mm (.118") max
 Wire Size AWG 16, 18
 Wire Size mm² N/A

Material Info

Old Part Number 42172B1

Reference - Drawing Numbers

Sales Drawing SD-42172-**

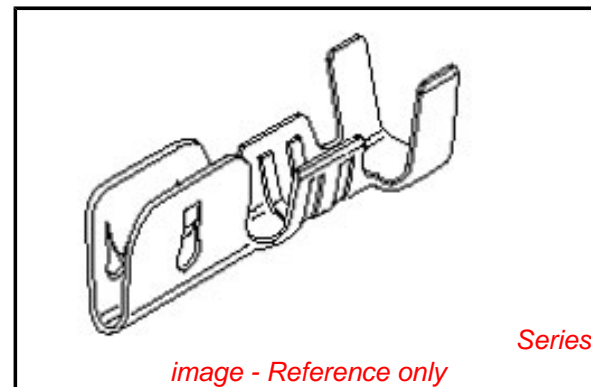


image - Reference only

EU RoHS

ELV and RoHS Compliant
REACH SVHC Contains SVHC: No
Halogen-Free Status

China RoHS



Need more information on product environmental compliance?

Email productcompliance@molex.com
 For a multiple part number RoHS Certificate of Compliance, [click here](#)

Please visit the [Contact Us](#) section for any non-product compliance questions.

Search Parts in this Series

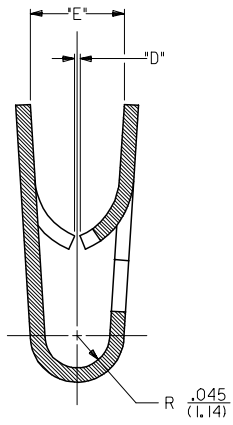
[42172Series](#)

Application Tooling | [FAQ](#)

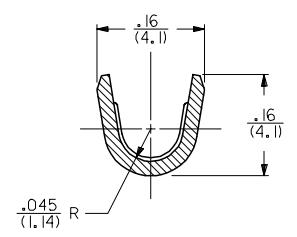
Tooling specifications and manuals are found by selecting the products below. Crimp Height Specifications are then contained in the Application Tooling Specification document.

Global

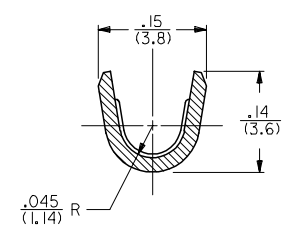
Description	Product #
Mini-Mac™ Applicator	0638913000



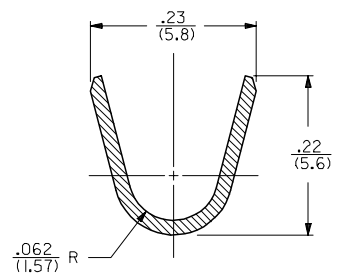
SECTION A-A
SCALE 8:1



SECTION B-B
SCALE 8:1
14 AWG WIRE



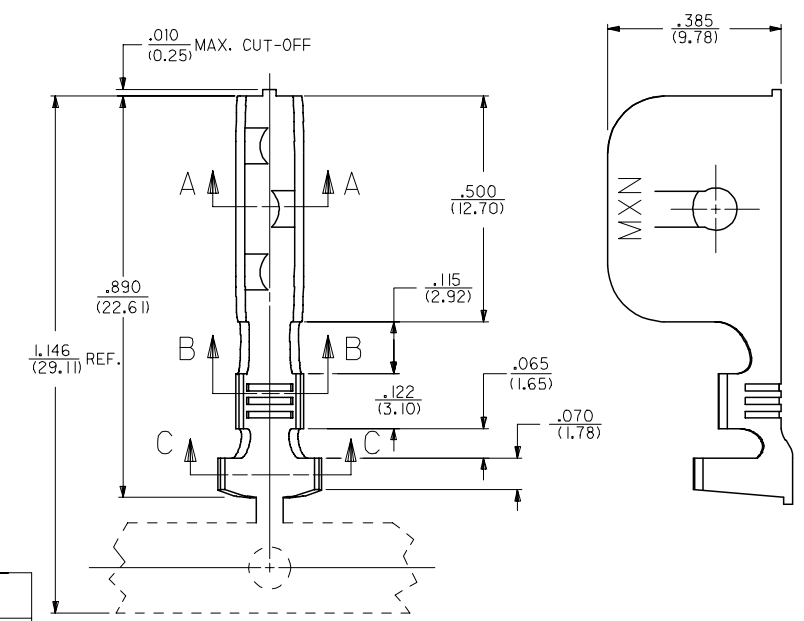
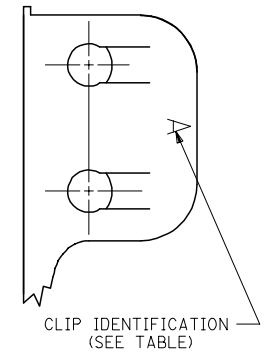
SECTION B-B
SCALE 8:1
18-16 AWG WIRE



SECTION C-C
SCALE 8:1

NOTES:
1. THIS GROUND CLIP CRIMPS TO #14- #18 AWG WIRE WITH .031(.79) THICK INSULATION, SEE CHART, AND IS INTENDED FOR USE ONLY AS A SECONDARY GROUND.

MATERIAL:
STEEL, STAINLESS, TYPE 301,
.020(.51) THICK.



PART NO.	ENG. NO.	DIM. "D"	DIM. "E"	PANEL THICKNESS RANGE	WIRE GAGE	DOUBLE WIRE COMBINATION
040-06-2015	42172-BB1	.025/(0.64)	.13/(3.3)	.035/(0.89)-.050/(1.27)	14 AWG	(2) #16 AWG
040-06-2014	42172-AA1	.008/(0.20)	.11/(2.8)	.015/(0.38)-.035/(0.89)	14 AWG	
050-29-1597	42172-H1	.035/(0.89)	.13/(3.3)	.045/(1.14)-.060/(1.52)	18-16 AWG	
040-06-2017	42172-F1	.015/(0.38)	.11/(2.8)	.020/(0.51)-.030/(0.76)	18-16 AWG	(2) #18 AWG OR
040-06-2013	42172-C1	.050/(1.27)	.13/(3.3)	.060/(1.52)-.075/(1.91)	18-16 AWG	(1) #18 & (1) #16
040-06-2005	42172-B1	.025/(0.64)	.13/(3.3)	.035/(0.89)-.050/(1.27)	18-16 AWG	
040-06-2003	42172-A1	.008/(0.20)	.11/(2.8)	.015/(0.38)-.035/(0.89)	18-16 AWG	
040-06-2024	42172-G1	.004/(0.10)	.11/(2.8)	.015/(0.38)-.035/(0.89)	18-16 AWG	

REM GEOM OUTSIDE DWG FC NO: DRAWN: C STEWART 2005/11/22 CHKD: APPR: REV: R1	DESCRIPTION	QUALITY SYMBOLS	GENERAL TOLERANCES (UNLESS SPECIFIED)	DIMENSION STYLE IN/MM	SCALE 5:1	DESIGN UNITS INCH	THIRD ANGLE PROJECTION																											
		$\nabla=0$ $\nabla=0$	<table border="1"> <tr> <th></th> <th>mm</th> <th>INCH</th> </tr> <tr> <td>4 PLACES</td> <td>± .10</td> <td>± .004</td> </tr> <tr> <td>3 PLACES</td> <td>± .15</td> <td>± .005</td> </tr> <tr> <td>2 PLACES</td> <td>± .25</td> <td>± .010</td> </tr> <tr> <td>1 PLACE</td> <td>± .35</td> <td>± .015</td> </tr> </table>		mm	INCH	4 PLACES	± .10	± .004	3 PLACES	± .15	± .005	2 PLACES	± .25	± .010	1 PLACE	± .35	± .015	<table border="1"> <tr> <td>DRAWN BY</td> <td>DATE</td> </tr> <tr> <td>MAB</td> <td>07-24-92</td> </tr> <tr> <td>CHECKED BY</td> <td>DATE</td> </tr> <tr> <td>KBP</td> <td>07-24-92</td> </tr> <tr> <td>APPROVED BY</td> <td>DATE</td> </tr> <tr> <td>RAS</td> <td>07-24-92</td> </tr> </table>	DRAWN BY	DATE	MAB	07-24-92	CHECKED BY	DATE	KBP	07-24-92	APPROVED BY	DATE	RAS	07-24-92	TITLE GROUND CLIP		
			mm	INCH																														
		4 PLACES	± .10	± .004																														
3 PLACES	± .15	± .005																																
2 PLACES	± .25	± .010																																
1 PLACE	± .35	± .015																																
DRAWN BY	DATE																																	
MAB	07-24-92																																	
CHECKED BY	DATE																																	
KBP	07-24-92																																	
APPROVED BY	DATE																																	
RAS	07-24-92																																	
DRAFT WHERE APPLICABLE MUST REMAIN WITHIN DIMENSIONS				MATERIAL NO. SEE CHART		MATERIAL NO. SD-42172-**																												
				SIZE C		SHEET NO. 1 OF 1																												