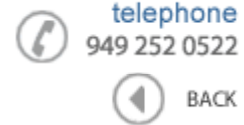


**Data Sheet**

Product Category: IF SAW Filter

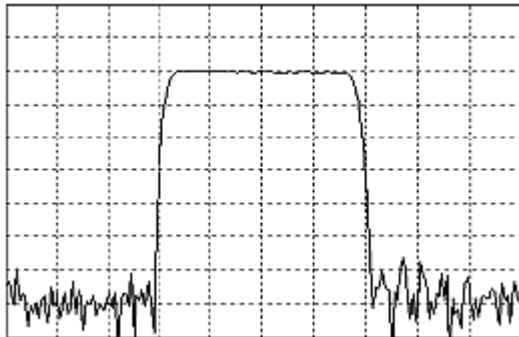
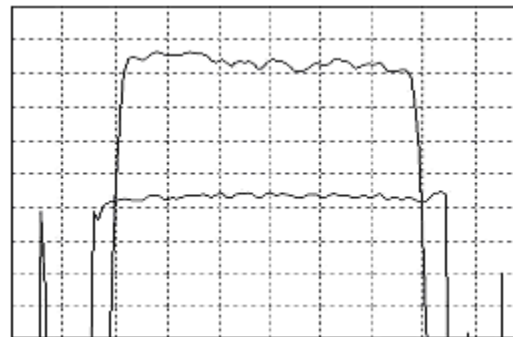
Part Number  
820-IF140.0M-FPackage  
20.2 x 12.6 Thru HoleApplication  
Base Station & RepeaterLast Modified  
May 30 2003

## TYPE :

140.0 MHz Bandpass Filter

34.0 MHz Bandwidth

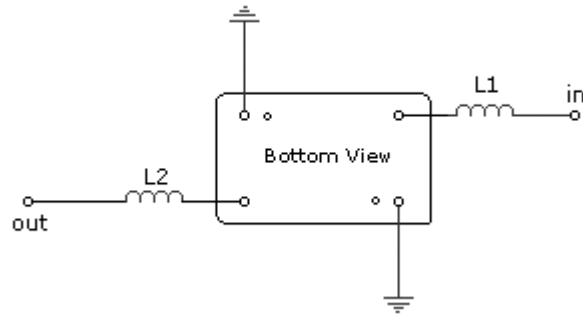
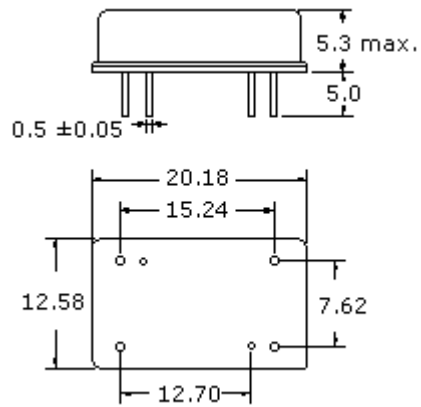
## PART NUMBER :

**820-IF140.0M-F**Horizontal : 10.0 MHz/Div  
Vertical : 10 dB/DivHorizontal : 6.0 MHz/Div  
Vertical : 1 dB/Div  
Vertical : 50 ns/Div**OPERATING CONDITIONS / ELECTRICAL CHARACTERISTICS**

PARAMETERS	Minimum	Typical	Maximum	Units
<b>Center Frequency</b>	139.75	140.0	140.25	MHz
<b>Insertion Loss</b>	-	22.2	24.0	dB
<b>1dB Bandwidth</b>	33.0	34.0	-	MHz
<b>3dB Bandwidth</b>	34.0	35.4	-	MHz
<b>40dB Bandwidth</b>	-	40.4	42.0	MHz
<b>Passband Ripple</b>	-	0.65	1.0	dB
<b>Group Delay Variation</b>	-	20	50	nsec
<b>Absolute Delay</b>	-	0.96	-	µsec
<b>Ultimate Rejection</b>	50	60	-	dB
<b>Substrate Material</b>	-	LN	-	-
<b>Ambient Temperature</b>	-	25	-	°C
<b>Phase Linearity</b>	-	7.5	10.0	degc

\* Custom SAW IF Filters available. Contact Oscilent for assistance.

**PACKAGE OUTLINE** (mm)**TEST FIXTURE**



L1 = 68nH

L2 = 82nH

Source/Load Impedance = 50 ohms

**Oscilent Corporation** - CALL **949.252.0522**

17962 Sky Park Circle, Building D, Irvine, CA 92614, USA  
 Fax: 949.252.0599, E-Mail: Sales@Oscilent.com

**Part No.:** 820-IF140.0M-F