



**Data Sheet**



Product Category: IF SAW Filter

Part Number  
820-IF70.0M-R

Package  
20.2 x 12.6 Thru Hole

Application  
Base Station & Repeater

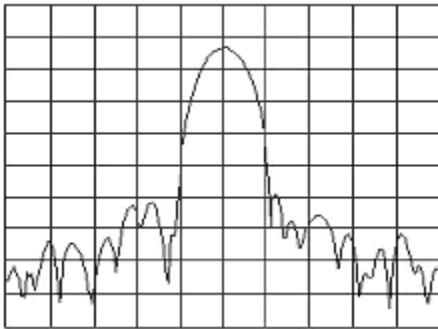
Last Modified  
May 02 2003

**TYPE :**

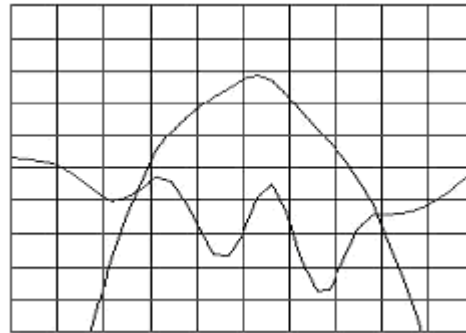
70.0 MHz Bandpass Filter  
300 KHz Bandwidth

**PART NUMBER :**

**820-IF70.0M-R**



Horizontal : 0.5 MHz/Div  
Vertical : 10 dB/Div



Horizontal : 0.08 MHz/Div  
Vertical : 1 dB/Div  
Vertical : 100 ns/Div

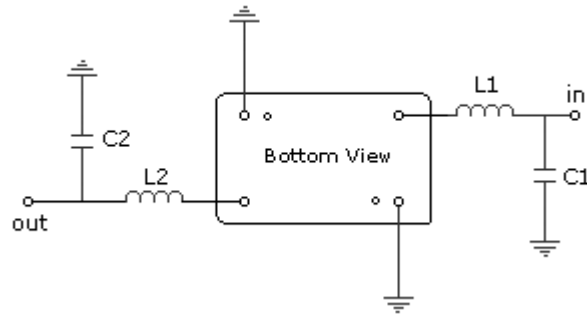
**OPERATING CONDITIONS / ELECTRICAL CHARACTERISTICS**

PARAMETERS	Minimum	Typical	Maximum	Units
<b>Center Frequency</b>	69.92	70.00	70.08	MHz
<b>Insertion Loss</b>	-	13.5	16.0	dB
<b>1dB Bandwidth</b>	0.12	0.18	-	MHz
<b>3dB Bandwidth</b>	0.20	0.34	-	MHz
<b>40dB Bandwidth</b>	-	1.1	1.2	MHz
<b>Passband Ripple</b>	-	1.2	1.5	dB
<b>Group Delay Variation</b>	-	300	1000	nsec
<b>Absolute Delay</b>	-	2.63	-	µsec
<b>Ultimate Rejection</b>	45	50	-	dB
<b>Substrate Material</b>	-	Qz	-	-
<b>Ambient Temperature</b>	-	25	-	°C

\* Custom SAW IF Filters available. Contact Oscilent for assistance.

**PACKAGE OUTLINE** (mm)

**TEST FIXTURE**



L1 = 180nH      C1 = 62pF  
 L2 = 180nH      C2 = 62pF  
 Source/Load Impedance = 50 ohms

**Oscilent Corporation** - CALL **949.252.0522**

17962 Sky Park Circle, Building D, Irvine, CA 92614, USA  
 Fax: 949.252.0599, E-Mail: Sales@Oscilent.com

**Part No.:** 820-IF70.0M-R