

PLEASE CHECK WWW.MOLEX.COM FOR LATEST PART INFORMATION

Part Number: [0008550101](#)
Status: **Active**
Overview: [kk](#)
Description: KK® Crimp Terminal, 22-30 AWG, Selective Gold (Au), Nickel (Ni) Under Plating

Documents:

[Drawing \(PDF\)](#) [RoHS Certificate of Compliance \(PDF\)](#)
[Product Specification PS-10-07 \(PDF\)](#)

General

Product Family	Crimp Terminals
Series	2759
Crimp Quality Equipment	Yes
Overview	kk
Product Name	KK®

Physical

Gender	Female
Material - Metal	Brass
Material - Plating Mating	Gold
Material - Plating Termination	Nickel
Packaging Type	Reel
Plating min: Mating (µin)	15
Plating min: Mating (µm)	0.375
Plating min: Termination (µin)	30
Plating min: Termination (µm)	0.75
Termination Interface: Style	Crimp or Compression
Wire Insulation Diameter	1.57mm (.062") max.
Wire Size AWG	22, 24, 26, 28, 30
Wire Size mm²	N/A

Material Info

Old Part Number	2759-(555)B
-----------------	-------------

Reference - Drawing Numbers

Product Specification	PS-10-07
Sales Drawing	SD-2759

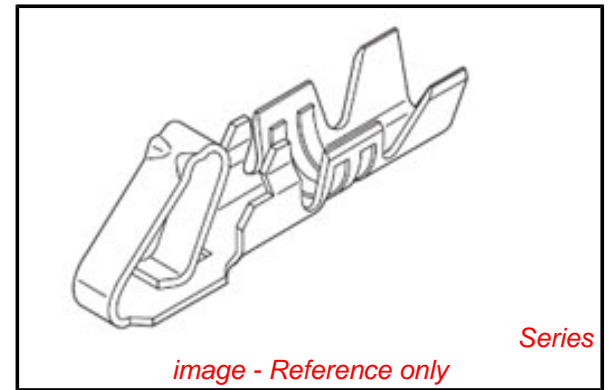


image - Reference only

EU RoHS

**ELV and RoHS
Compliant**

REACH SVHC

Contains SVHC: No

Halogen-Free

Status

Halogen-Free

China RoHS



**Need more information on product
environmental compliance?**

Email productcompliance@molex.com
 For a multiple part number RoHS Certificate of Compliance, [click here](#)

Please visit the [Contact Us](#) section for any non-product compliance questions.

Search Parts in this Series

[2759Series](#)

Use With

2695 , 5051 , 6745 , 41895

Application Tooling | FAQ

Tooling specifications and manuals are found by selecting the products below. Crimp Height Specifications are then contained in the Application Tooling Specification document.

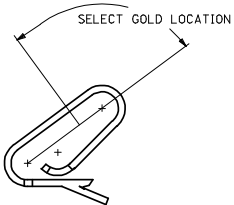
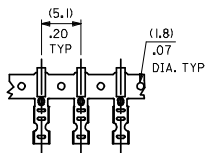
Global

Description	Product #
Extraction Tool	0011030022
Terminator Die	0011402265
Insertion Tool	0638120000
Mini-Mac™	0638882000
Applicator, Use with Large Wire Insulation Diameter	
Mini-Mac™	0638882100
Applicator, Use with	

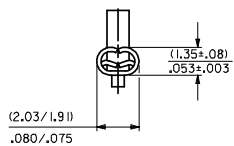
This document was generated on 06/01/2010

PLEASE CHECK WWW.MOLEX.COM FOR LATEST PART INFORMATION

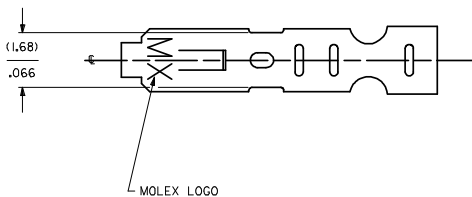
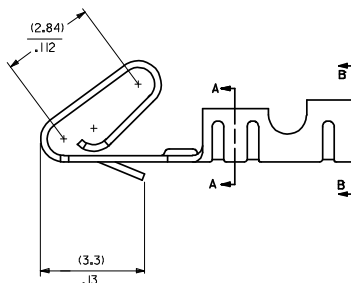
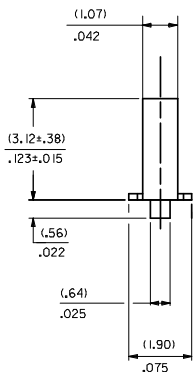
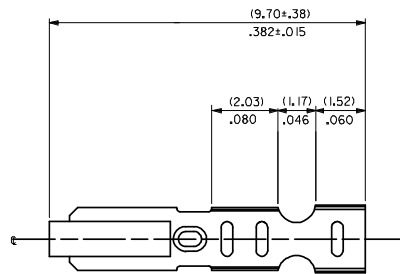
CARRIER VIEW



CRIMP DETAIL

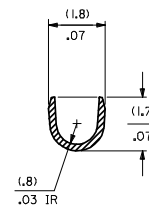


CRIMPED TERMINAL 2759-IP90)LC IS USED WITHOUT WIRE AND IS INSERTED INTO HOUSING TO PROVIDE TENSION WHEN ASSEMBLED TO HEADERS DURING SHIPMENT.

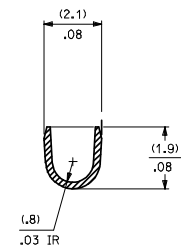


NOTES

- MATERIAL
(0.203±0.010)/.008D±.0004 THICK BRASS
- FINISH
102 - OVERALL TIN: (0.00508)/.000200 MIN. TIN OVER (0.00254)/.000100 MIN. COPPER
122 - OVERALL TIN: (0.00381)/.000150 MIN. TIN OVER (0.00076)/.000030 MIN. NICKEL
P909 - OVERALL HOT TIN DIP: (0.00254)/.000100 MIN.
550 - SELECT GOLD (0.00038)/.000015 MIN. OVERALL GOLD FLASH: (0.00005)/.000002 MIN. OVERALL NICKEL UNDERPLATE: (0.00076)/.000030 MIN.
555- SELECT GOLD (0.00038)/.000015 MIN. OVERALL NICKEL UNDERPLATE: (0.00076)/.000030
558 - SELECT GOLD: (0.00076)/.000030 MIN. OVERALL GOLD FLASH: (0.00005)/.000002 MIN. OVERALL NICKEL UNDERPLATE: (0.00127)/.000050 MIN.
*THE PRIMARY SHIPPING CARTON WILL BE LABELED "COMPLIANT TO RoHS DIRECTIVE 2002/95/EC AND ELV ANNEX II OF DIRECTIVE 2000/53/EC." CARTONS WITHOUT THIS LABEL MAY CONTAIN PRODUCT WITH TIN-LEAD PLATING.
- PRODUCT SPEC: PS-10-07
- PACKAGING SPECIFICATION: NONE
- CRIMP IS FOR 22-30 GA WIRE WITH (1.57)/.062 DIA INSULATION MAX.
- INSERTION FORCE OF TERMINAL INTO (2.54)/.100 CENTERLINE CONNECTOR IS 2.5 LBS. MAX
- TERMINALS WILL RETAIN 8 LBS PULL FOR 1 MIN. IN A (2.54)/.100 CENTERLINE HOUSING.
- DIMENSIONS GIVEN ACROSS CENTERLINES ARE SYMMETRICAL ABOUT THOSE CENTERLINES WITHIN HALF THE TOTAL TOLERANCE.
- CODE LETTER PRECEDING PART NO. DESIGNATES MANUFACTURING LOCATION.
I=IRELAND
- THIS PART CONFORMS TO CLASS B REQUIREMENTS OF COSMETIC SPECIFICATION PS-45499-002.



SECTION A-A
BACKGROUND OMITTED



SECTION B-B
BACKGROUND OMITTED

2759-(***)*
FORM
L=LOOSE
C=LOOSE CRIMPED
A=CHAIN PER ES-339-A
B=CHAIN PER ES-339-B
PLATING
SEE NOTE 2

SH	REV
1	AS3
2	AS4

UPDATE DIMS
DEC NO: UCP/2008-2190
2008/03/17
DRM/NADERR
2008/03/18
CHKD: SCHMIDT
2008/03/18
APPR: SMITH
2008/03/24

QUALITY SYMBOLS	DESCRIPTION
∇=0	
▽=0	

GENERAL TOLERANCES (UNLESS SPECIFIED)	
mm	INCH
4 PLACES ± .010	± .0004
3 PLACES ± .010	± .0004
2 PLACES ± 0.25	± .010
1 PLACE ± 0.36	± .014
ANGULAR ± 1/2°	

DIMENSION STYLE		SCALE	DESIGN UNITS	THIRD ANGLE PROJECTION
MM/IN	DATE	---	INCH	☐
DRAWN BY	DATE	TITLE		
SAMIEC	07/28/87	CRIMP TERMINAL		
CHECKED BY	DATE	22-30 GA WIRE		
PATEL	07/28/87			
APPROVED BY	DATE			
LENZ	07/28/87			

MATERIAL NO. **SD-2759** DOCUMENT NO. **SD-2759** SHEET NO. **1 OF 2**

MOLEX INCORPORATED

THIS DRAWING CONTAINS INFORMATION THAT IS PROPRIETARY TO MOLEX INCORPORATED AND SHOULD NOT BE USED WITHOUT WRITTEN PERMISSION

2759-(***)*													
PART NO.	ENG. NO.	PART NO.	ENG. NO.	PART NO.	ENG. NO.	PART NO.	ENG. NO.	PART NO.	ENG. NO.	PART NO.	ENG. NO.	PART NO.	ENG. NO.
08-55-0101	2759-(555)B												
08-55-0102	2759-(555)L												
08-55-0126	2759-(555)A												
08-56-0109	2759-(550)B												
08-56-0110	2759-(550)L												
08-50-0113	2759-(P909)B												
08-50-0114	2759-(P909)L												
08-50-0124	2759-(P909)C												
08-51-0108	2759-(122)B												
	2759-(122)L												
I 08-50-0274	2759-(P909)B												
I 08-50-0275	2759-(P909)L												
I 08-50-0273	2759-(P909)A												
08-55-0130	2759-(558)B												
08-55-0131	2759-(558)L												
08-50-0160	2759-(102)L												
08-50-0159	2759-(102)												

REMOVE *999 PARTS EC NO: UCP2008-0722 DRAWN BY: 2007/08/02 CHKD: JRELL 2007/08/02 APPROV: SMITH 2007/08/03 AS4 REV DESCRIPTION	QUALITY SYMBOLS	GENERAL TOLERANCES (UNLESS SPECIFIED)	DIMENSION STYLE	SCALE	DESIGN UNITS	THIRD ANGLE PROJECTION										
	$\nabla=0$ $\nabla=0$	<table border="1"> <tr><th>mm</th><th>INCH</th></tr> <tr><td>4 PLACES ± --- ± ---</td><td></td></tr> <tr><td>3 PLACES ± --- ± ---</td><td></td></tr> <tr><td>2 PLACES ± --- ± ---</td><td></td></tr> <tr><td>1 PLACE ± --- ± ---</td><td></td></tr> </table>	mm	INCH	4 PLACES ± --- ± ---		3 PLACES ± --- ± ---		2 PLACES ± --- ± ---		1 PLACE ± --- ± ---		MM/IN	---	INCH	
	mm	INCH														
	4 PLACES ± --- ± ---															
3 PLACES ± --- ± ---																
2 PLACES ± --- ± ---																
1 PLACE ± --- ± ---																
	ANGULAR ±1/2°	DRAWN BY: SAMIEC DATE: 07/28/87 CHECKED BY: PATEL DATE: 07/28/87 APPROVED BY: LENZ DATE: 07/28/87	TITLE	CRIMP TERMINAL 22-30 GA WIRE												
	DRAFT WHERE APPLICABLE MUST REMAIN WITHIN DIMENSIONS	SEE CHART	MATERIAL NO.	DOCUMENT NO.	MOLEX INCORPORATED											
			SIZE D	THIS DRAWING CONTAINS INFORMATION THAT IS PROPRIETARY TO MOLEX INCORPORATED AND SHOULD NOT BE USED WITHOUT WRITTEN PERMISSION												