

SRS Valve

Manifold mountable plastic switching solenoid valve

FEATURES

- 3-way, 2 position valve (NO, NC & Distributor)
- Design incorporates thermoplastics and non-corrosive metals
- Offers high-density manifold mounting with convenient manifold to PC board interface
- Weighs only 7 g, perfect where low weight is critical to overall system



MEDIA COMPATIBILITY

Gases and select liquids

WETTED MATERIALS

Body:
PBT; LNP Thermocomp®

Elastomers:
FKM

Non-corrosive metals:
302 series stainless steel; 430 FR series stainless steel; CMI-B core iron; electroless nickel plating

ELECTRICAL

Power 0.5, 1.0 or 2.0 W

Voltage 5, 12, 24 V_{DC} ± 10%

PHYSICAL PROPERTIES

Operating environment 0 to 70 °C

Storage temperature -40 to 70 °C

Length 38 mm (1.5 in)

Width 10 mm (0.394 in)

Height 15.5 mm (0.61 in)

Porting Manifold mount,
(gasket and screws supplied)

Weight 7 g (0.23 oz)

Internal volume 0.0267 cm³

Filtration (recommended) 40 µm

Lubrication None required

Thermocomp® is a registered trademark of General Electric Company.

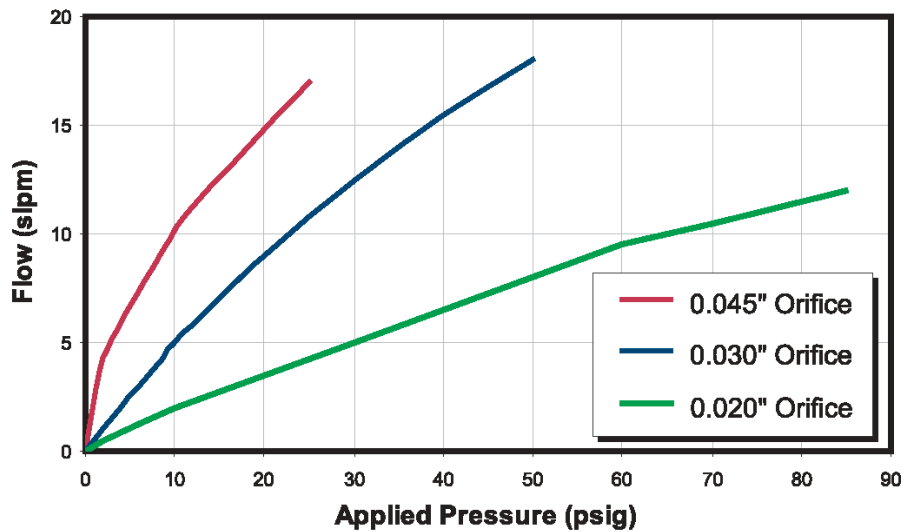
SRS Valve

Manifold mountable plastic switching solenoid valve

PERFORMANCE CHARACTERISTICS

Part no.	Pressure	Vacuum	Orifice sizes/ Equivalent C_v ¹	Leak rate ²	Response
SRS10...	0...35 psig	0...27 "Hg (0...13 psi)	0.020" (0.510 mm)/ 0.0075 C_v	≤0.016 sccm (bubble tight)	<30 msec cycling (2 Watts)
SRS11...	0...85 psig				
SRS13...	0...20 psig		0.030" (0.762 mm)/ 0.017 C_v		
SRS14...	0...50 psig				
SRS16...	0...10 psig		0.045" (1.143 mm)/ 0.027 C_v		
SRS17...	0...20 psig				

FLOW CURVES (typical air flow)³



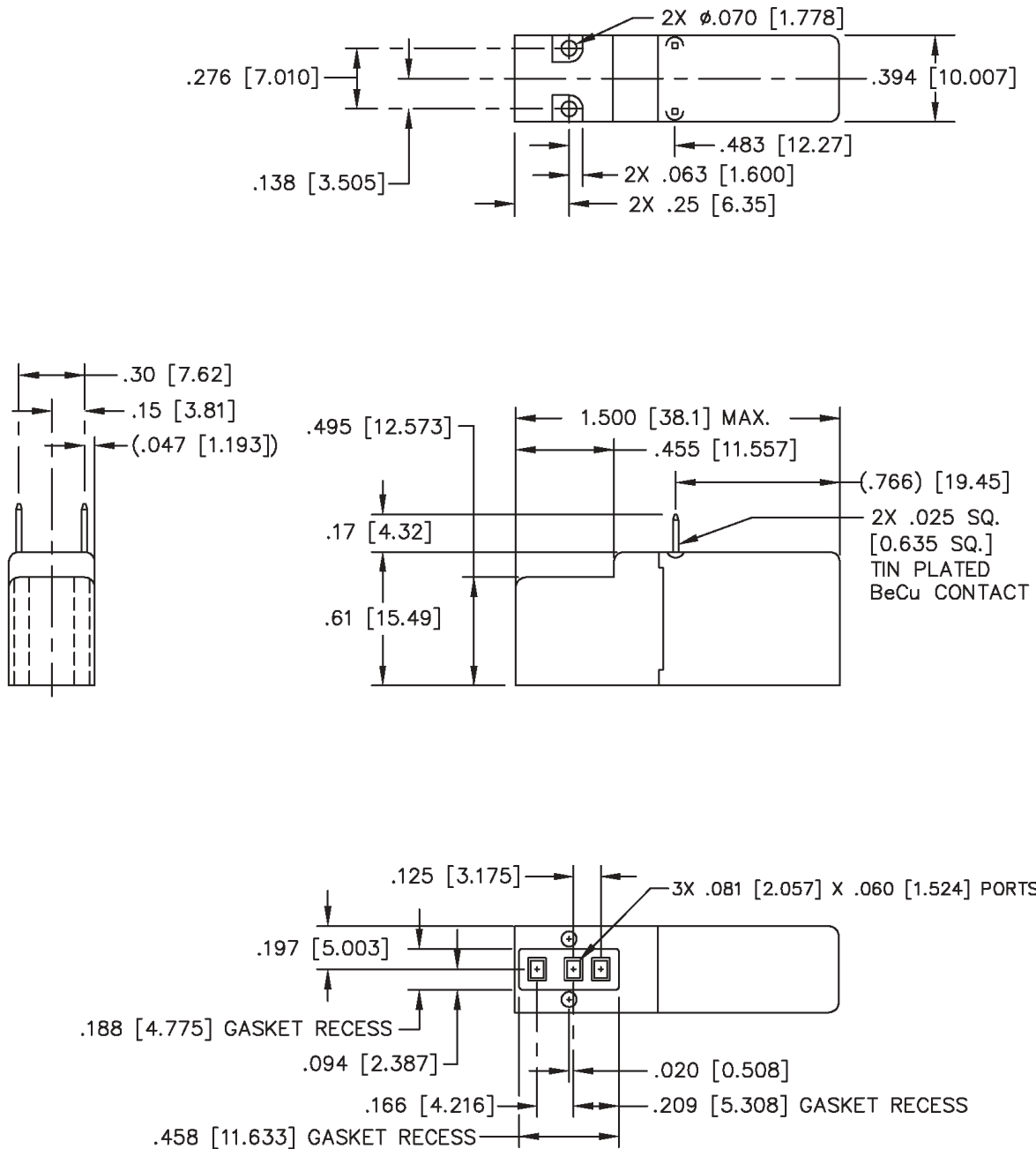
Notes:

- ¹ The C_v value is the volume flow in US gallons/min under specific flow conditions and describes the relative flow capacity of a valve. If several valves with the same nominal diameter are compared, the valve with the highest C_v value has the best flow dynamics design. The equivalent european measure is the k_v value expressed in m^3/h ($k_v = 0.86 C_v$).
- ² sccm denotes Standard Cubic Centimeters per Minute. It is a unit for the flow rate at standard conditions of temperature and pressure. 1000 sccm = 1 slpm.
- ³ slpm denotes Standard Liters per Minute. It is a unit for the flow rate at standard conditions of temperature and pressure. 1 slpm = 1000 sccm.

SRS Valve

Manifold mountable plastic switching solenoid valve

OUTLINE DRAWING

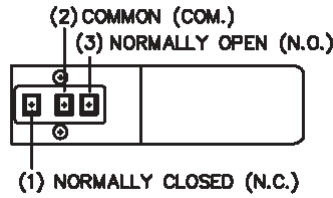


dimensions in inches (mm)

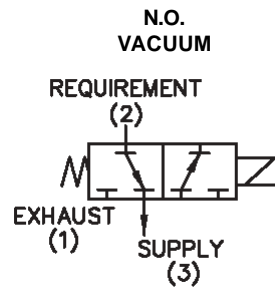
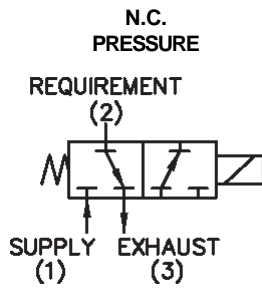
SRS Valve

Manifold mountable plastic switching solenoid valve

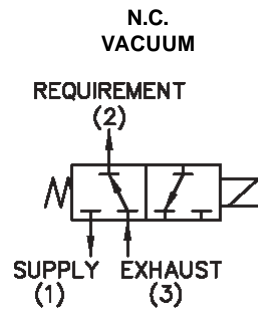
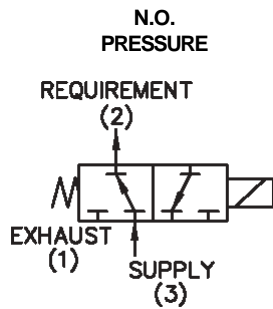
VALVE TYPE



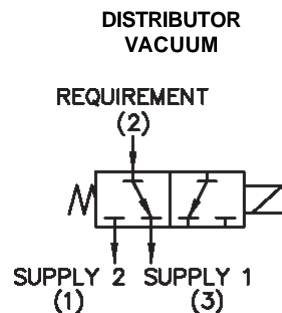
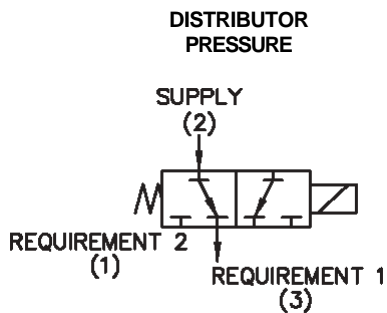
Type 1



Type 2



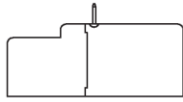
Type 3



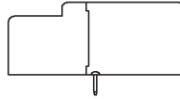
SRS Valve

Manifold mountable plastic switching solenoid valve

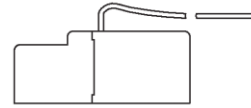
ELECTRICAL INTERFACE OPTIONS



SRS...F
(Square pins, front)



SRS...M
(Square pins, manifold)



SRS...L
(Wire leads)

ORDERING INFORMATION

Options	Series	Model no.			Type	Material	Seal material	Voltage	Electrical connection	
		Max. pressure	Orifice size	Coil wattage						
	SRS	10:	0...35 psi	0.020" (0.510 mm)	0.5 W	P: PBT	V: FKM	5: 5 V _{DC} 12: 12 V _{DC} 24: 24 V _{DC}	F: 0.025" square pins, front	
		11:	0...85 psi	0.020" (0.510 mm)	1 W					2: 3-way NO
		13:	0...20 psi	0.030" (0.762 mm)	0.5 W					3: distributor
		14:	0...50 psi	0.030" (0.762 mm)	1 W					
		16:	0...10 psi	0.045" (1.143 mm)	0.5 W					
		17:	0...20 psi	0.045" (1.143 mm)	1 W					M: 0.025" square pins, manifold interface
									L: insulated wire leads, 18", front	
Example: SRS 10 2 P V 12 M										

Note: Not all combinations might be available.
Please contact your nearest Sensortechincs sales representative for further information.

Sensortechincs reserves the right to make changes to any products herein. Sensortechincs does not assume any liability arising out of the application or use of any product or circuit described herein, neither does it convey any license under its patent rights nor the rights of others.