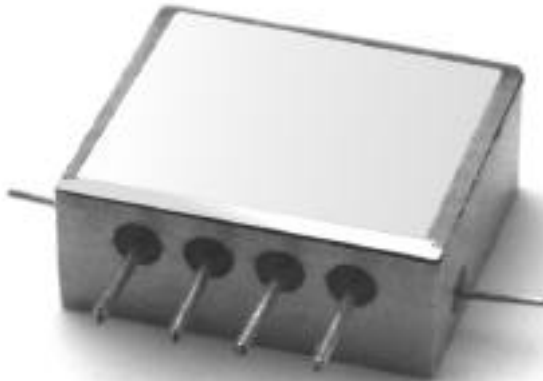


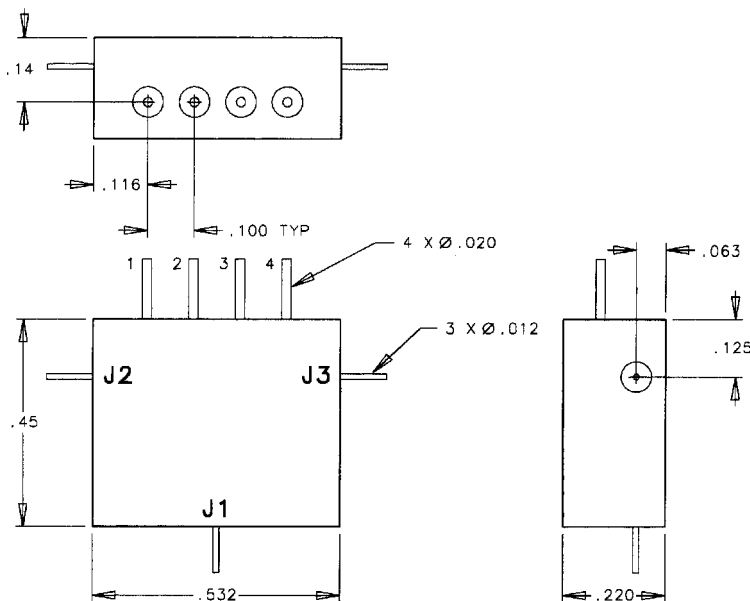
SINGLE POLE, DOUBLE THROW DROP-IN MODULES WITH DRIVERS



ELECTRICAL CHARACTERISTICS

| PART # | TYPE | FREQ RANGE GHz | LOSS dB | ISO dB | VSWR | SWITCH SPEED ns | RF POWER dBm | DC SUPPLY Volts |
|--------|--------|----------------|---------|--------|-------|-----------------|--------------|-----------------|
| 6027 | SP2T R | .5-2 | 0.8 | 60 | 1.5:1 | 1000 | 20 | +5,-5 |
| 6028 | SP2T R | 1-12 | 1.3 | 50 | 2.0:1 | 1000 | 20 | +5,-5 |

PACKAGE OUTLINE



DESCRIPTION

General purpose switches designed for integration into microstrip sub-assemblies at frequencies up to 14 GHz. The switch and driver are extremely compact, making these modules ideal for a wide range of applications where space is at a premium. Hermetic, military/industrial design.

CONNECTORS

■ Pin

OPERATING ENVIRONMENT

■ Operating Temperature: -55 to +125°C
 ■ Storage Temperature: -65 to +150°C
 ■ Impedance: 50 ohm
 ■ Control: Transistor-Transistor Logic (TTL)

APPLICATIONS

■ Radar Warning Receivers (RWR)
 ■ Tracking radar