

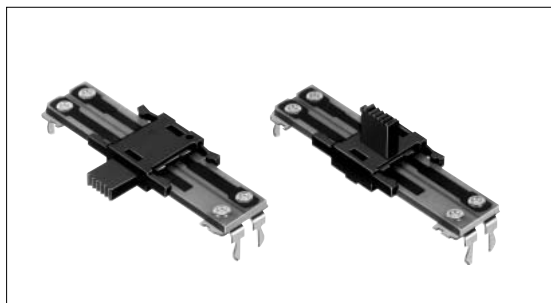
Slide Potentiometer Slim Slide™ (Low-profile)

RS M Series



Available in 4.5mm-height board-in type.

Rotary Potentiometers
Slide Potentiometers



Typical Specifications

Items	Specifications
Total resistance tolerance	± 20%
Maximum operating voltage	50V AC, 50V DC
Operating force	0.15 to 0.8N
Operating life	10,000cycles
Operating temperature range	- 10 to + 70

General-use
Mixer

Product Line

Number of resistor elements	Direction of lever	Travel (mm)	Lever types	Length of lever (mm)	Total resistance (k)	Resistance taper	Center detent	Terminal	Minimum packing unit (pcs.)	Products No.	Drawing No.	
Single-unit	Vertical	15	J	5	10	1B	Without	Board in	1,000	RS15M111J002	1	
			5		RS20M111J000					2		
		20	C	100	RS20M111C000					3		
			J	10	RS20M113JA03					2		
		Horizontal	15	J	5					10	RS15M11AJ004	4
				C	10					RS15M11AC006	5	
	J			5	50		RS15M11AJ00L			4		
	20		C	5	10		RS15M11AC003			5		
			J	5	5		RS15M11AJ00V			4		
			50	5	RS15M11AJ00R							
	100	5	5	50	RS20M11AJ00C		6					
	100	5	100	100	RS20M11AJ00G							
100	5	100	100	RS20M11AJ00T								

Dimensions

Unit:mm

No.	Style	PC board mounting hole dimensions
1		
2		

Note

Products other than those listed in above products are also available. Please contact us for details.

Refer to P.418 for product varieties.
Refer to P.418 for details of lever types.

Dimensions

Unit:mm

No.	Style	PC board mounting hole dimensions
3		
4	<p>L₁ 5 10</p>	
5	<p>L₁ 5 10</p>	
6		

Rotary Potentiometers
Slide Potentiometers

General-use
 Mixer

The length of the operating part (L₁) can be customized. Refer to **P.418** for details.

Product Varieties

In addition to the recommended products, the following specifications can also be accommodated.

Travel Distance Variety

Travel (mm)	15	20
-------------	----	----

Total Resistance Variety

Total resistance (k)	5	10	20	50	100	200	250
-----------------------	---	----	----	----	-----	-----	-----

Resistance Taper

Resistance taper	15A	1B	3B
------------------	-----	----	----

Note

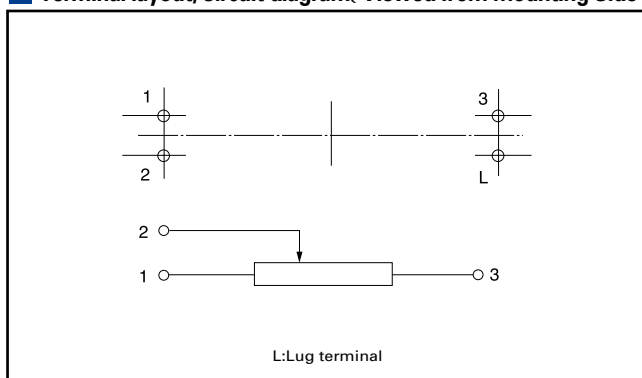
Tapped types are not available.

Lever Types

Unit:mm

Configuration code	C		J	
Dimensions				
Length L ₁	5	10 (Only horizontal type)	5	10

Terminal layout/Circuit diagram (Viewed from Mounting Side)



Notes

1. [] marked are specifications recommended by ALPS.
2. Products other than those listed in the above list are also available. Please contact us for details.

Refer to P.419, 502 for resistance taper.

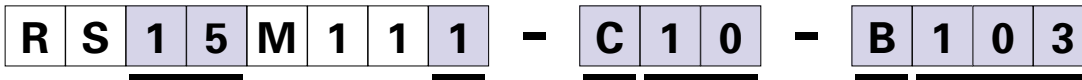
Rotary
Potentiometers
Slide
Potentiometers

General-use
Mixer

Orders Other Than Recommended Products

When ordering product varieties that are not listed in the Product Line, please specify by referring to the below example.

Sample Part Number



Travel (mm)

15, 20

Operating direction, Center detent

Code	Operating direction	Board in	Center detent
1	Vertical	Board in	without
3		Board in	with
A	Horizontal	Board in	without
C		Board in	with

Shaft types

Code
C
J

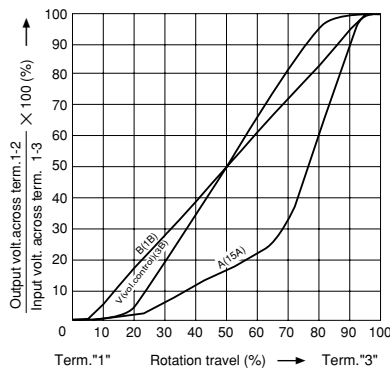
Operating length

Code	length (mm)
05	5
10	10

Resistance taper

Code	Resistance taper
A	15A
B	1B
V	3B

B: For tone & general
V: For vol.



Total resistance

Code	Total resistance (kΩ)	Code	Total resistance (kΩ)
502	5	104	100
103	10	204	200
203	20	254	250
503	50		






Note

marked are specifications recommended by ALPS.

Rotary
Potentiometers
Slide
Potentiometers

General-use
Mixer

List of Varieties

Type	Super Slide™		Slim Slide™ (Slim4)				Slim Slide™ (Low-Profile)		
	RS	11	RS		H1		RS	M11	
photo									
Travel (mm)	15 (RS15111) 20 (RS20111) 30 (RS30111) 45 (RS45111) 60 (RS6011Y)	20 (RS20112) 30 (RS30112) 45 (RS45112) 60 (RS60112)	15 (RS15H111) 15 (RS15H113) 20 (RS20H111) 20 (RS20H113) 30 (RS30H111)	15 (RS15H121) 20 (RS20H123) 30 (RS30H121)	15 (RS15H11A) 20 (RS20H11A) 20 (RS20H11C) 30 (RS30H11A)	15 (RS15H12A) 20 (RS20H12A) 30 (RS30H12A)	15 (RS15M111) 20 (RS20M111) 20 (RS20M113)	15 (RS15M11A) 20 (RS20M11A)	
Number of resistor elements	Single-unit	Dual-unit	Single-unit	Dual-unit	Single-unit	Dual-unit	Single-unit		
Direction of lever	Vertical				Horizontal		Vertical	Horizontal	
Electrical Performance	Total resistance (k)	10, 20, 50, 100, 200		5, 10, 20, 50, 100, 200, 250					
	Resistance taper	15A, 1B, 4B, 10A, 3B, 15C		15A, 1B, 3B					
Mechanical Performance	Operating force	0.3 to 2.5N		0.2 to 1.1N		0.15 to 0.8N			
	Stopper strength	50N		30N					
	Lever push-pull strength			30N		20N			
	Lever wobble (mm) Both sides	$\frac{2(2 \times L)}{20}$		1.6 max.					
	Detent slip-out force	Operating force (0.2 to 2N)		Operating force (0.05 to 0.8N)		With detent feeling			
	Lever deviation (mm) One side	0.5 max.							
Solder heat resistance	Manual soldering	350 max. 3s max.							
	Dip soldering	260 max. 5s max.							
Environmental Performance	Cold	- 30 ± 2 for 96h							
	Dry heat	70 ± 2 for 96h				70 ± 2 for 240h			
	Damp heat	40 ± 2 , 90 to 95%RH for 96h							
Page	402		410				416		

Rotary Potentiometers

Slide Potentiometers

General-use

Mixer

Slide Potentiometers Cautions420, 421

Notes

1. "L" in the "Lever Wobble" column of the above table indicates the length of lever.
2. Products other than those listed in the above list are also available. Please contact us for details.
3. The resistance taper specification in () are individually defined.
4. 「RS」 indicates travel.