



**Data Sheet**



Product Category: IF SAW Filter

Part Number	Package	Application	Last Modified
820-IF65.54M-E	20.2 x 12.6 Thru Hole	Repeater	Jan. 01, 2007

**TYPE :**

65.54 MHz Bandpass Filter for Gap Filter  
19.60 MHz Bandwidth

**PART NUMBER :**

**820-IF65.54M-E**

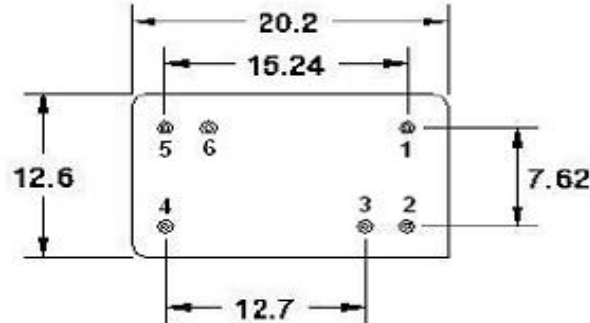
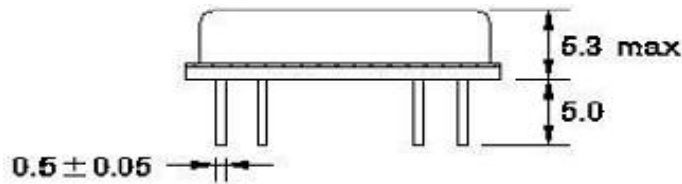


**OPERATING CONDITIONS / ELECTRICAL CHARACTERISTICS**

PARAMETERS	Minimum	Typical	Maximum	Units
Center Frequency (Fo)	65.50	65.54	65.58	MHz
Insertion Loss at Fo	-	25.4	26.5	dB
Source Impedance (single ended)*	-	50	-	ohm
Load Impedance (single ended)*	-	50	-	ohm
1.0dB Bandwidth	18.95	19.23	-	MHz
3.0dB Bandwidth	19.35	19.60	-	MHz
35.0dB Bandwidth	-	20.86	21.00	MHz
40.0dB Bandwidth	-	20.93	21.10	MHz
Amplitude Ripple 58.0~73.0 MHz	-	0.45	0.55	dB
Group Delay Variation 58.0~73.0 MHz	-	40	100	nsec
Absolute Delay at Fo	-	2.35	-	µsec
Ultimate Rejection at Fo +/-20 MHz	55	60	-	dB
Maximum DC Voltage	-	-	10	V
Maximum Input Power	-	-	10	dBm
Operating Temperature Range	-30	-	+80	°C
Storage Temperature Range	-40	-	+85	°C

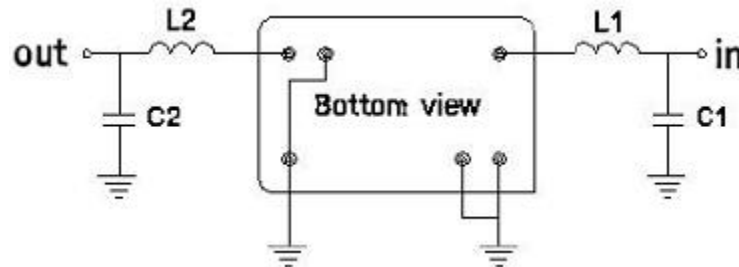
\*With Matching Network (Ref. Testing Environment Circuit as shown below)

**PACKAGE OUTLINE (mm)**



PIN DESCRIPTIONS: IN - 1, OUT - 5, GROUND - 2,3,4,6

### TEST CIRCUIT



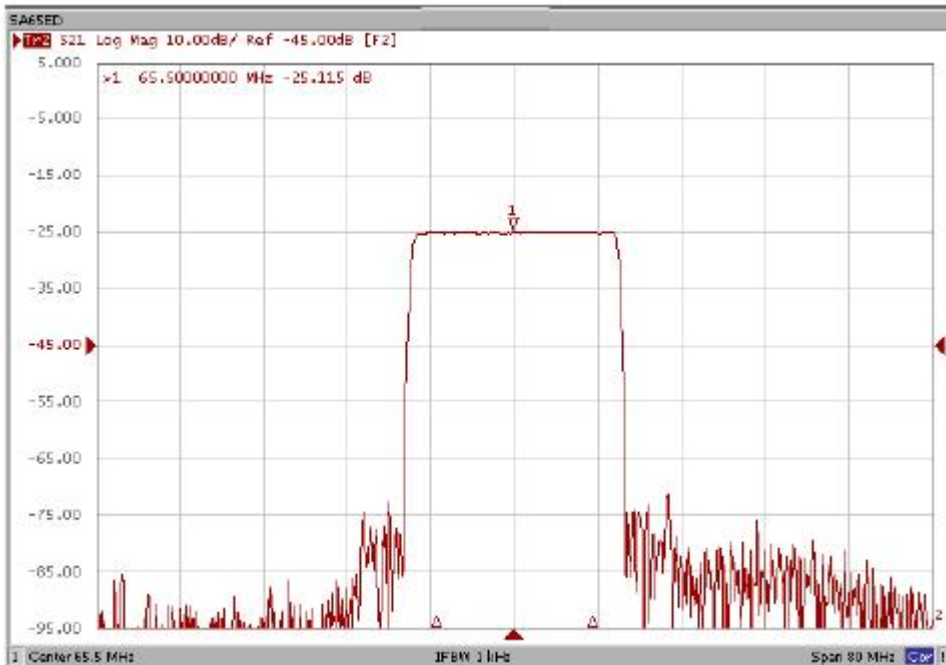
TEST FIXTURE AND VALUES/SOURCE AND LOAD IMPEDANCE 50 ohm

INPUT: L1: 180 nH; C1: 30 pF

OUTPUT: L2: 180 nH; C2: 30 pF

COMPONENT VALUES MAY VARY DUE TO PCB PARASITICS

### FREQUENCY RESPONSE



**Oscilent Corporation** - CALL **949.252.0522**

**Part No.:** **820-IF65.54M-E**

18195 East McDermott Street , Building D , Irvine , CA 92614 , USA  
Fax: 949.252.0599 , E-Mail: Sales@Oscilent.com

---

[Crystal Oscillators](#) | [Quartz Crystal](#) | [TCXO](#) | [VCXO](#) | [IF SAW Filter](#) | [RF SAW Filter](#) | [Ceramic Resonator](#)  
[Crystal Filter](#) | [Ceramic Filter](#) | [SAW Filter / SAW Devices](#) | [Site Map](#)