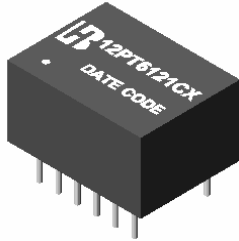


Bothhand USA email:sales@bothhandusa.com http://www.bothhandusa.com
SINGLE 10/100 BASE-T LAN MAGNETIC
P/N:12PT6121CX DATA SHEET

Feature

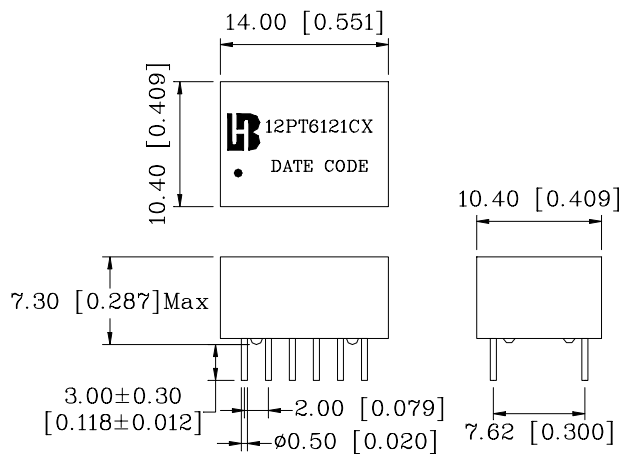
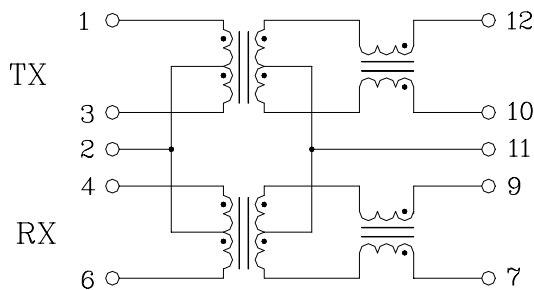


- Complies with IEEE 802.3 standards including 350 uH min OCL with 8mA bias.
- Symmetrical TX and RX channels for Auto MDI/MDIX capability.
- Operating temperature range: 0°C to +70°C.
- Storage temperature range: -25°C to +105°C.

| Electrical Specifications @ 25°C | | | | | | |
|----------------------------------|----------------------|---------|--|-------------------------|-----------|---------------|
| Part Number | Turns Ratio (±3%) | | OCL (uH Min) @100KHz/0.1V with 8mA DC Bias | Insertion Loss (dB Max) | | HI-POT (Vrms) |
| | TX | RX | | 1-100MHz | | |
| 12PT6121CX | 1CT:1CT | 1CT:1CT | 350 | -1.2 | | 1500 |
| Continue | | | | | | |
| Part Number | Return Loss (dB Min) | | | Cross talk (dB Min) | | DCMR (dB Min) |
| | 1-30MHz | 50MHz | 60-80MHz | 1-60MHz | 60-100MHz | |
| 12PT6121CX | -15 | -13 | -11 | -40 | -35 | -35 |

Schematic

Mechanical



Units: mm[Inches] Tolerances: xx.x0±0.25[0.010]
 0.xx±0.05[0.002]