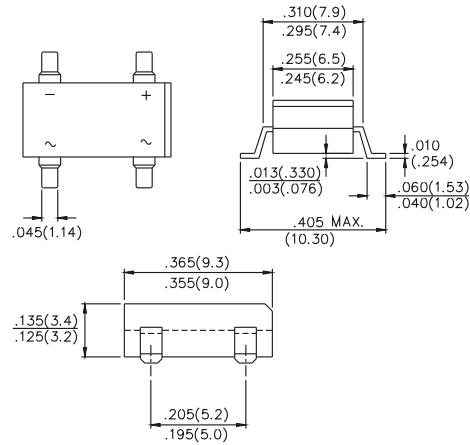
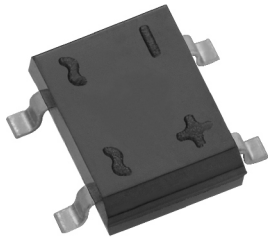


DF15005S thru DF1510S

SURFACE MOUNT GLASS PASSIVATED BRIDGE RECTIFIERS SINGLE-PHASE GLASS BRIDGE

REVERSE VOLTAGE - 50 TO 1000 VOLTS FORWARD CURRENT - 1.5 AMPERES



Dimensions in inches and (millimeters)

FEATURES

- Rating to 1000V PRV
- Ideal for printed circuit board
- Reliable low cost construction utilizing molded Plastic technique results in inexpensive product
- Lead in plated copper
- The plastic material has UL flammability Classification 94V-0

MECHANICAL DATA

Polarity : As marked on body
 Weight : 0.02 ounce, 0.38gram
 Mounting position : Any

MAXIMUM RATINGS AND ELECTRICAL CHARACTERISTICS

Ratings at 25°C ambient temp. unless otherwise specified
 Single phase, half sine wave, 60Hz, resistive or inductive load
 For capacitive load, derate current by 20%

		DF 15005S	DF 1501S	DF 1502S	DF 1504S	DF 1506S	DF 1508S	DF 1510S	UNITS
Maximum Recurrent Peak Reverse Voltage	V_{RRM}	50	100	200	400	600	800	1000	Volts
Maximum RMS Bridge input Voltage	V_{RMS}	35	70	140	280	420	560	700	Volts
Maximum DC Blocking Voltage	V_{DC}	50	100	200	400	600	800	1000	Volts
Maximum Average Forward Rectified Current @ $T_A=40^\circ\text{C}$	$V_{(AV)}$	1.5							Amps
Peak Forward Surge Current, 8.3ms Single Half Sine-Wave Superimposed on Rated Load (JEDEC Method)	I_{FSM}	50							Amps
Maximum DC Forward Voltage at ADC	V_F	1.1							Volts
Maximum DC Reverse @ $T_J=25^\circ\text{C}$ at rated DC Blocking Voltage @ $T_J=125^\circ\text{C}$	I_R	10 500							μA
I^2t Rating for fusing ($t < 8.3\text{ms}$)	I^2t	10.4							A^2S
Typical Junction capacitance per element (Note 1)	C_J	25							pF
Typical Thermal resistance (Note 2)	$R_{\theta JC}$	40							$^\circ\text{C} / \text{W}$
Operating Temperature Range	T_J	-55 to +150							$^\circ\text{C}$
Storage Temperature Range	T_{STG}	-55 to +150							$^\circ\text{C}$

NOTES :

1. Measured at 1.0 MHz and Applied Reverse Voltage of 4.0 Volts DC
2. Thermal Resistance From Junction to Ambient and from junction to lead mounted on P.C.B with 0.5 x 0.5" (13x13mm) copper pads.

DF15005S thru DF1510S

SURFACE MOUNT GLASS PASSIVATED BRIDGE RECTIFIERS SINGLE-PHASE GLASS BRIDGE

RATING AND CHARACTERISTICS CURVES DF15005S THRU DF1510S

Fig. 1 - FORWAED CURRENT DERATING CURVE

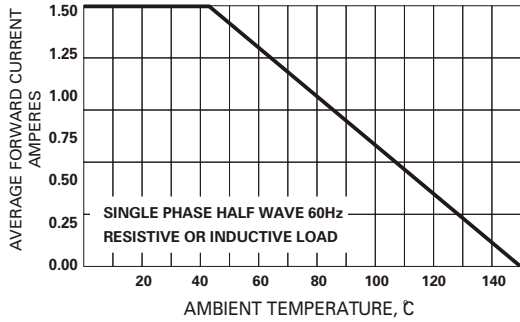


Fig. 2 - MAXIMUM NON-REPETITIVE SURGE CURRENT

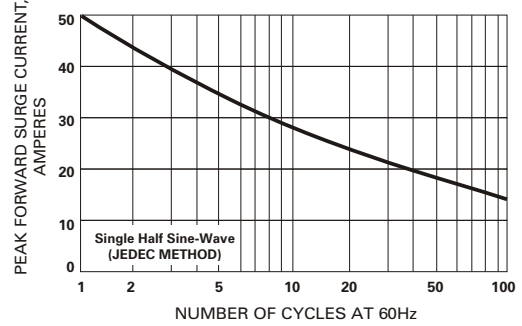


Fig. 3 - TYPICAL JUNCTION CAPACITANCE

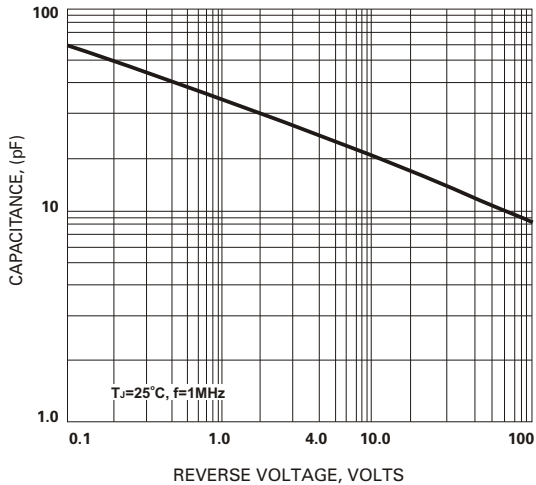


Fig. 4 - TYPICAL FORWARD CHARACTERISTICS

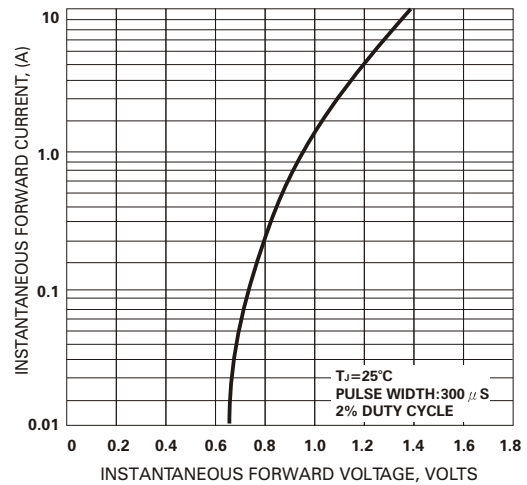


Fig. 5 - TYPICAL REVERSE CHARACTERISTICS

