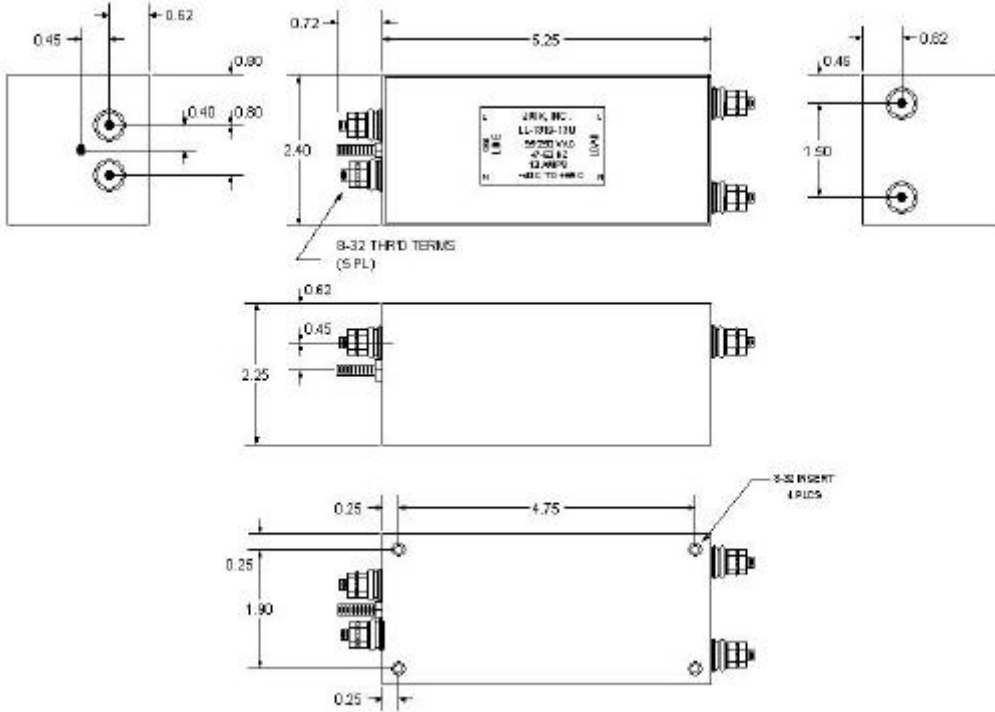
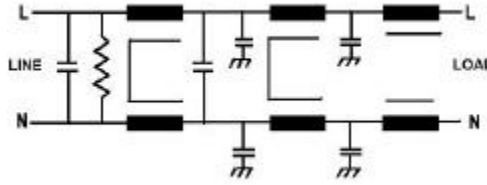




LL-1319-13M

Operating Voltage = DC to 250 Vac
Operating Current (Max)= 13A
Frequency = 50/60 HZ
Temp. Range (Storage) = -40 to 85 C
Temp Range (Operating) @ 12.6 A = -20 to 45 C
Diel. Withstanding Voltage (Ph - Case) = 1500 Vac
Diel Withstanding Voltage (Ph - Ph) = 1500 Vdc
Leakage current @ 250 Vac, 60 HZ = 2.5 MA max.
Discharge Voltage after 60 sec = 34 V max.

Order P/N LL-1319-13M

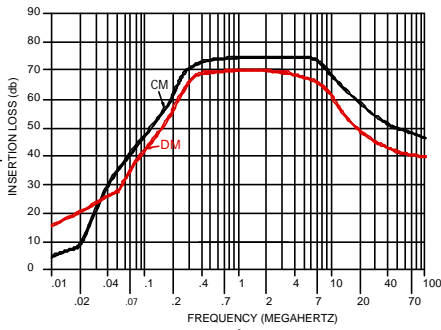


See page 2 for performance graph and other information on this filter.

USA JMK Inc 15 Caldwell Dr. Amherst, NH 03031 PH: 603 886-4100 FX: 603 886-4115
email: info@jmkfilters.com
EUR JMK Ltd Glasgow G13 1DN Scotland UK PH: 44-(0) 7785310729 Fax: 44-(0) 141 589 1884



LL-1319-13M



When mated with the Vicor Harmonic Attenuator Module Driver and Harmonic Attenuator Module Booster (Part# VI-HAMD-IM, VI-BAMD-IM), the LL-1319-13M EMI filter is designed to meet the Conducted Emissions and Conducted Susceptibility requirements of MIL-STD-461E at the input connections for the following platforms: Surface Ships, Navy Aircraft and Army Ground.

Other Parameters:

Thermal Shock MIL-STD-202, Method 107, Test Condition A, except Step 1 shall be $-40^{\circ}\text{C} +0, -3$

Mechanical Shock MIL-STD-202, Method 213B, Test Condition K

Vibration MIL-STD-202, Method 204D, Test Condition B

Moisture Resistance MIL-STD-202, Method 106G

Seal MIL-STD-202, Test Condition D

USA JMK Inc 15 Caldwell Dr. Amherst, NH 03031 PH: 603 886-4100 FX: 603 886-4115
email: info@jmkfilters.com
EUR JMK Ltd Glasgow G13 1DN Scotland UK PH: 44-(0) 7785310729 Fax: 44-(0) 141 589 1884