



REVISIONS			
REV	DESCRIPTION	DATE	APPRD
G	LIGHT PIPE CONFIGURATION ADDED	MAY21/09	
H	PART NUMBERS UPDATED	JUL27/09	

A

A

PART NUMBER  
(LAST DIGIT INDICATING  
PACKAGING TYPE, NOT  
PRINTED ON THE PART)

DATE CODE

B

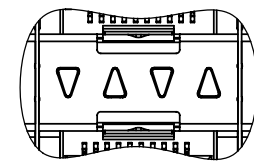
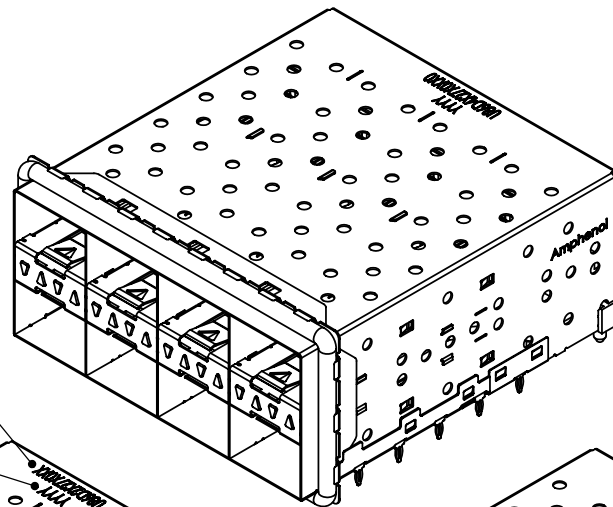
B

C

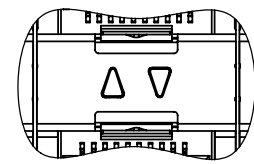
C

D

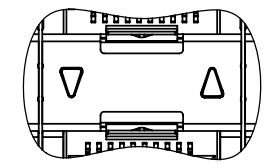
D



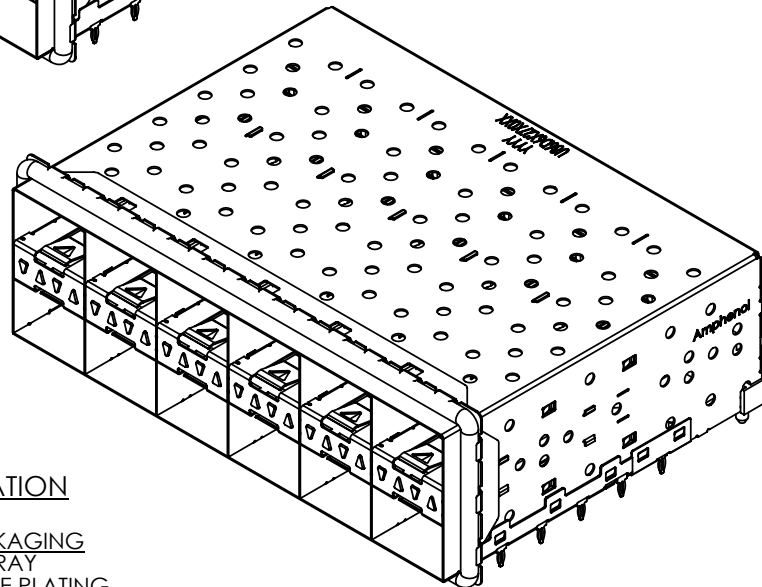
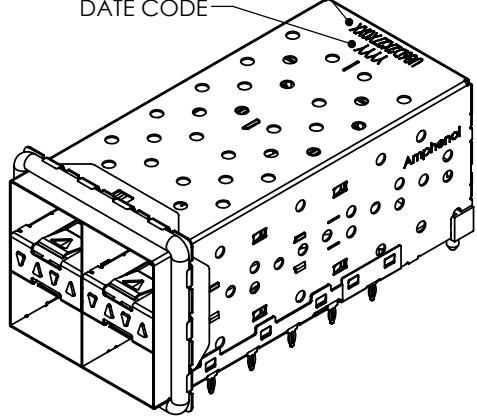
U86-DX427-10XX1  
4 LIGHT PIPES PER 2X1



U86-DX427-20XX1  
2 INNER LIGHT PIPES  
PER 2X1



U86-DX427-30XX1  
2 OUTER LIGHT PIPES  
PER 2X1



MATERIAL: (RoHS COMPLIANT)  
CAGE - PRESS FIT:  
COPPER ALLOY  
PLATING:  
SEE AMPHENOL PART NUMBER  
CONFIGURATION FOR OPTIONS.  
CONNECTOR - PRESS FIT:  
PLASTIC HOUSING:  
LCP, FLAMMABILITY RATING UL94-0.  
CONTACTS:  
PHOSPHOR BRONZE  
PLATING OPTION: NICKEL 2.54 μm MIN.  
LIGHT PIPE:  
CLEAR POLYCARBONATE, FLAMMABILITY  
RATING UL94-0.  
PACKAGING:  
TRAY PACKAGING.  
TEMPERATURE RANGE:  
-40°C TO +85°C

**AMPHENOL PART NUMBER CONFIGURATION**

U86 - D X 4 2 7 - X 0 X X 1

NUMBER OF PORTS  
2 = 2X2  
4 = 2X4  
6 = 2X6

LIGHT PIPE CONFIGURATION  
1 = 4 LIGHT PIPES PER 2X1  
2 = 2 INNER LIGHT PIPES PER 2X1  
3 = 2 OUTER LIGHT PIPES PER 2X1

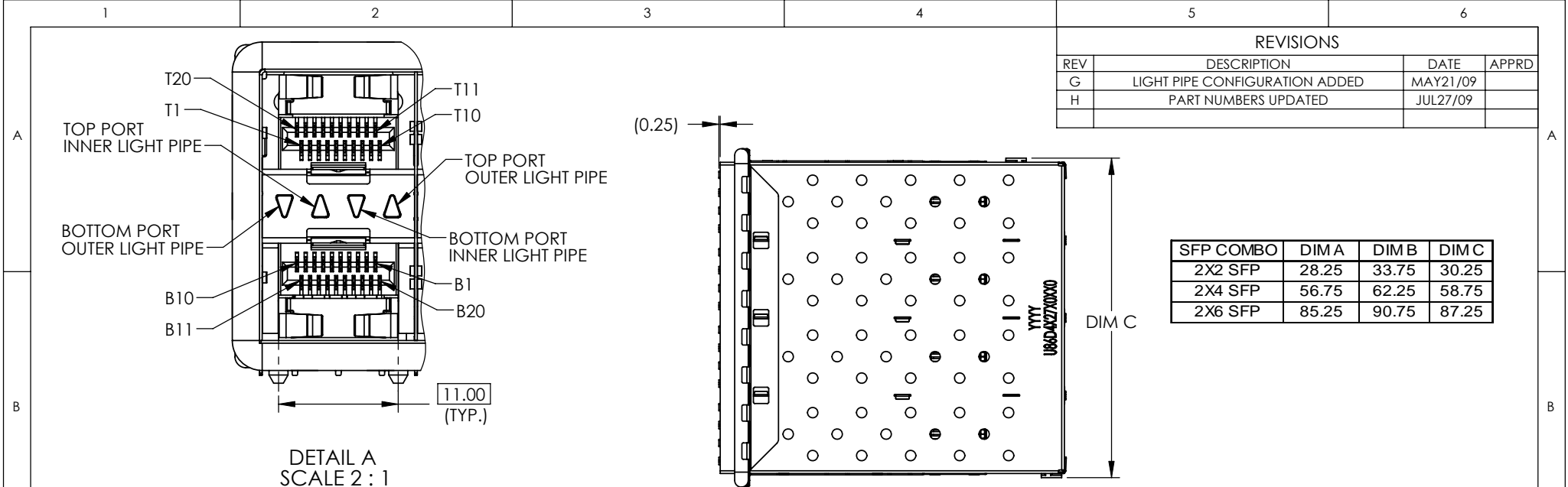
PACKAGING  
1 = TRAY  
CAGE PLATING  
2 = NICKEL  
PRESS FIT CONNECTOR PLATING  
1 = 0.76 μm MIN. GOLD ON MATING AREA  
3.81-7.62 μm TIN/LEAD ON TERMINATION  
4 = 0.38 μm MIN. GOLD ON MATING AREA  
3.81-7.62 μm TIN/LEAD ON TERMINATION

**DO NOT SCALE DRAWING**

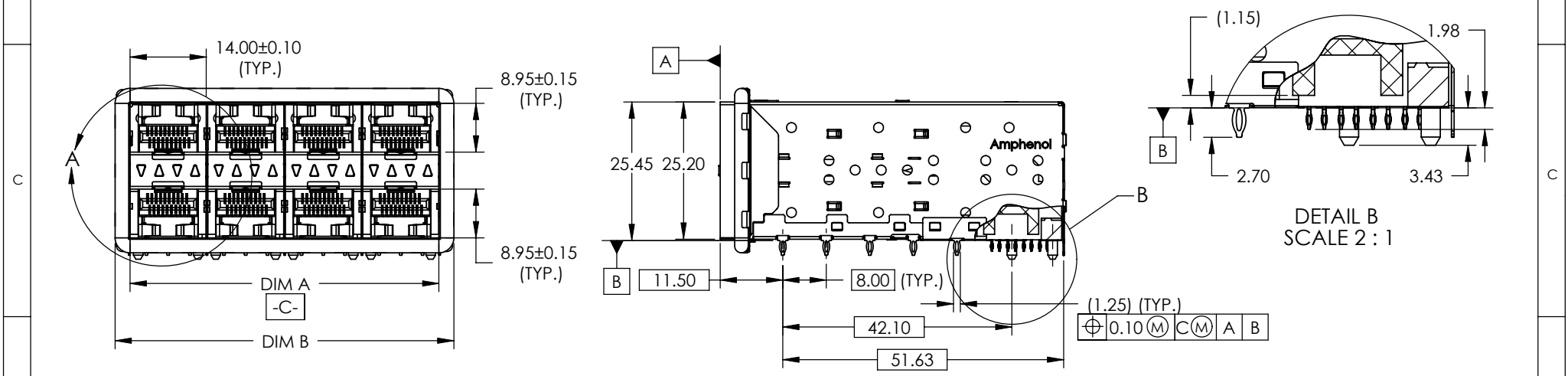
THIS DOCUMENT CONTAINS PROPRIETARY INFORMATION AND SUCH INFORMATION MAY NOT BE DISCLOSED TO OTHERS FOR ANY PURPOSE OR USED FOR MANUFACTURING PURPOSES WITHOUT PERMISSION FROM AMPHENOL CANADA CORP.

UNLESS OTHERWISE SPECIFIED DIMENSIONS ARE IN MILLIMETERS TOLERANCES ARE: DECIMALS X.X ± 0.25 X.XX ± 0.15 MATERIAL AND FINISH N/A REF. X CODE IDENT. NO. 03554	APPROVALS		DATE	<b>Amphenol Canada Corp.</b> TITLE 2XN SFP+ EXPRESSPORT™ COMBO WITH LIGHT PIPE (ELASTOMERIC GASKET) SIZE A4 DWG. NO. P-U86-DX427-X0XX1 REV. H SCALE 1:1 PROJECT SHEET 1 OF 6
	DRAWN	J.SI	FEB23/09	
	DESIGNED	J.SI	FEB23/09	
	CHECKED	X	X	
		QA APPD	X	
		IE APPD	X	
		DWG APPD		

REVISIONS			
REV	DESCRIPTION	DATE	APPRD
G	LIGHT PIPE CONFIGURATION ADDED	MAY21/09	
H	PART NUMBERS UPDATED	JUL27/09	



SFP COMBO	DIM A	DIM B	DIM C
2X2 SFP	28.25	33.75	30.25
2X4 SFP	56.75	62.25	58.75
2X6 SFP	85.25	90.75	87.25

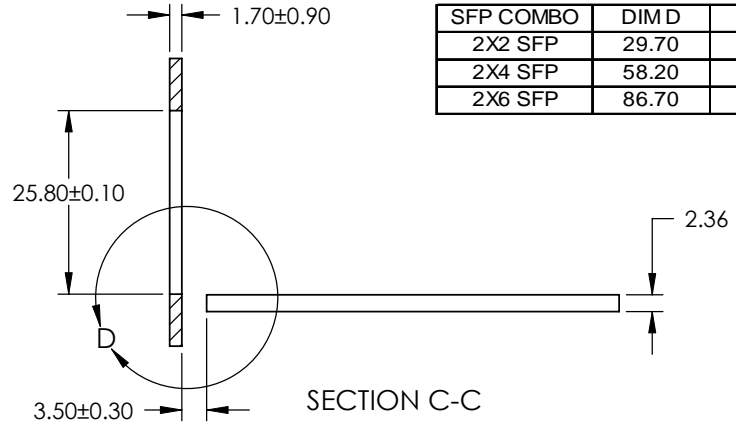
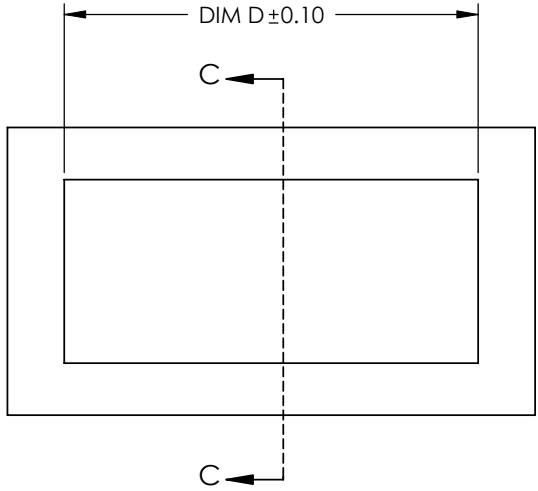


**DO NOT SCALE DRAWING**

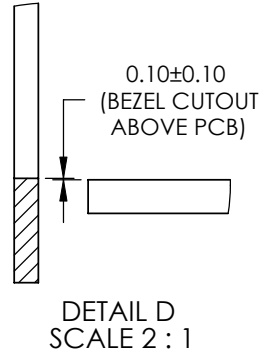
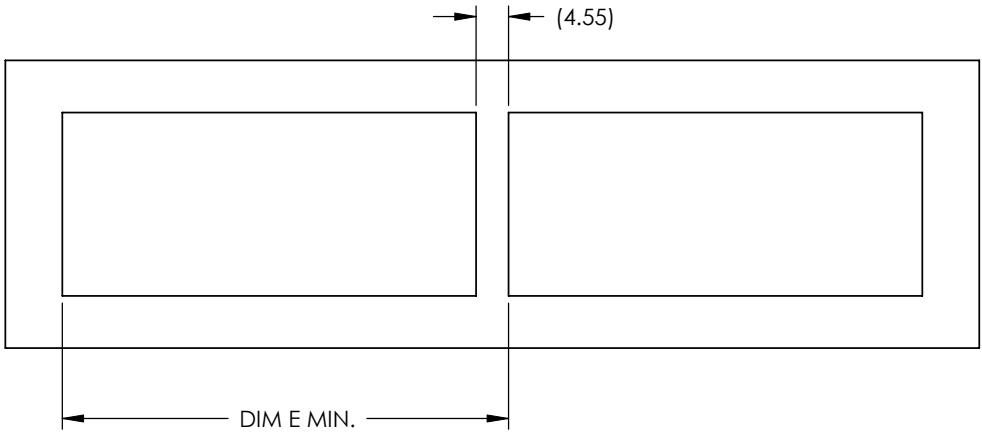
THIS DOCUMENT CONTAINS PROPRIETARY INFORMATION AND SUCH INFORMATION MAY NOT BE DISCLOSED TO OTHERS FOR ANY PURPOSE OR USED FOR MANUFACTURING PURPOSES WITHOUT PERMISSION FROM AMPHENOL CANADA CORP.

UNLESS OTHERWISE SPECIFIED DIMENSIONS ARE IN MILLIMETERS TOLERANCES ARE: DECIMALS                      ANGLES X.X ± 0.25                      ± 1° X.XX ± 0.15	<b>APPROVALS</b>		<b>DATE</b>	<b>Amphenol Canada Corp.</b>
	DRAWN	J.SI	FEB23/09	
MATERIAL AND FINISH N/A	DESIGNED	J.SI	FEB23/09	TITLE 2XN SFP+ EXPRESSPORT™ COMBO WITH LIGHT PIPE (ELASTOMERIC GASKET)
	CHECKED	X	X	
REF.	X	IE APPD	X	SIZE A4
CODE IDENT. NO.	03554	DWG APPD		DWG. NO. P-U86-DX427-X0XX1
				SCALE 1:1
				PROJECT
				SHEET 2 OF 6

REVISIONS			
REV	DESCRIPTION	DATE	APPRD
G	LIGHT PIPE CONFIGURATION ADDED	MAY21/09	
H	PART NUMBERS UPDATED	JUL27/09	



SFP COMBO	DIM D	DIM E
2X2 SFP	29.70	35.20
2X4 SFP	58.20	63.70
2X6 SFP	86.70	92.20



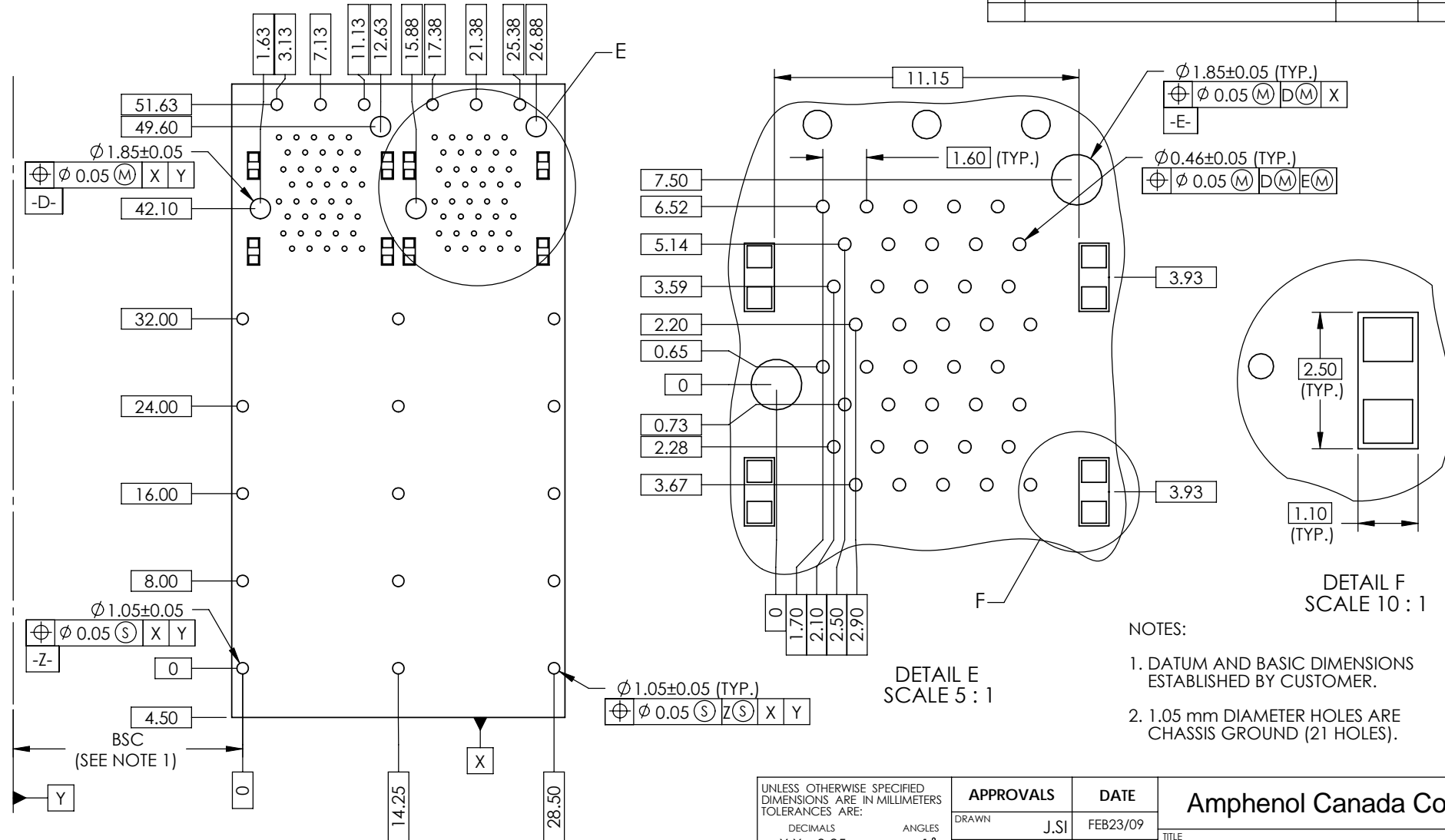
UNLESS OTHERWISE SPECIFIED DIMENSIONS ARE IN MILLIMETERS TOLERANCES ARE: DECIMALS X.X ± 0.25 X.XX ± 0.15 MATERIAL AND FINISH N/A REF. X CODE IDENT. NO. 03554	<b>APPROVALS</b>		<b>DATE</b>
	DRAWN	J.SI	FEB23/09
	DESIGNED	J.SI	FEB23/09
	CHECKED	X	X
	QA APPD	X	X
	IE APPD	X	X
	DWG APPD		

<b>Amphenol Canada Corp.</b>			
TITLE 2XN SFP+ EXPRESSPORT™ COMBO WITH LIGHT PIPE (ELASTOMERIC GASKET)			
SIZE A4	DWG. NO. P-U86-DX427-X0XX1	REV. H	
SCALE 1:1	PROJECT	SHEET 3 OF 6	

**DO NOT SCALE DRAWING**

THIS DOCUMENT CONTAINS PROPRIETARY INFORMATION AND SUCH INFORMATION MAY NOT BE DISCLOSED TO OTHERS FOR ANY PURPOSE OR USED FOR MANUFACTURING PURPOSES WITHOUT PERMISSION FROM AMPHENOL CANADA CORP.

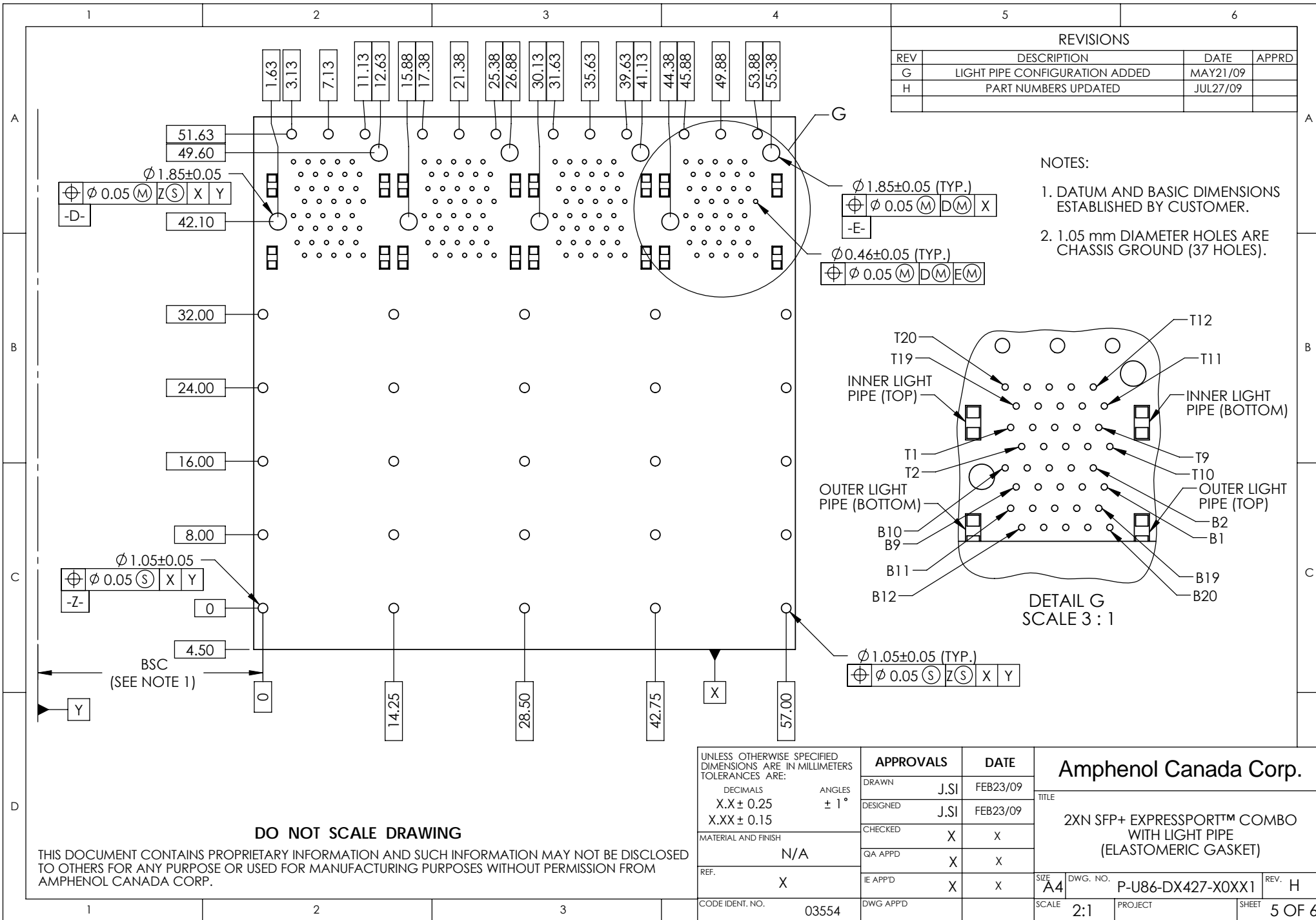
REVISIONS			
REV	DESCRIPTION	DATE	APPRD
G	LIGHT PIPE CONFIGURATION ADDED	MAY21/09	
H	PART NUMBERS UPDATED	JUL27/09	



- NOTES:
- DATUM AND BASIC DIMENSIONS ESTABLISHED BY CUSTOMER.
  - 1.05 mm DIAMETER HOLES ARE CHASSIS GROUND (21 HOLES).

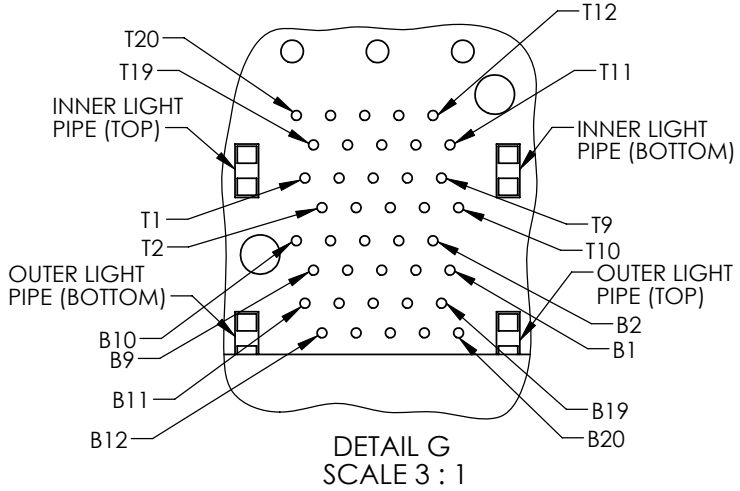
THIS DOCUMENT CONTAINS PROPRIETARY INFORMATION AND SUCH INFORMATION MAY NOT BE DISCLOSED TO OTHERS FOR ANY PURPOSE OR USED FOR MANUFACTURING PURPOSES WITHOUT PERMISSION FROM AMPHENOL CANADA CORP.

UNLESS OTHERWISE SPECIFIED DIMENSIONS ARE IN MILLIMETERS TOLERANCES ARE:		<b>APPROVALS</b>		<b>DATE</b>		<b>Amphenol Canada Corp.</b>	
DECIMALS	ANGLES	DRAWN	J.SI	FEB23/09	TITLE		
X.X ± 0.25	± 1°	DESIGNED	J.SI	FEB23/09	2XN SFP+ EXPRESSPORT™ COMBO WITH LIGHT PIPE (ELASTOMERIC GASKET)		
X.XX ± 0.15		CHECKED	X	X	SIZE A4 DWG. NO. P-U86-DX427-X0XX1 REV. H		
MATERIAL AND FINISH	N/A	QA APPD	X	X	SCALE 2:1 PROJECT SHEET 4 OF 6		
REF.	X	IE APPD	X	X			
CODE IDENT. NO.	03554	DWG APPD					



REVISIONS			
REV	DESCRIPTION	DATE	APPRD
G	LIGHT PIPE CONFIGURATION ADDED	MAY21/09	
H	PART NUMBERS UPDATED	JUL27/09	

- NOTES:
- DATUM AND BASIC DIMENSIONS ESTABLISHED BY CUSTOMER.
  - 1.05 mm DIAMETER HOLES ARE CHASSIS GROUND (37 HOLES).



UNLESS OTHERWISE SPECIFIED DIMENSIONS ARE IN MILLIMETERS TOLERANCES ARE:		<b>APPROVALS</b>		<b>DATE</b>	
DECIMALS	ANGLES	DRAWN	J.SI	FEB23/09	
X.X ± 0.25	± 1°	DESIGNED	J.SI	FEB23/09	
X.XX ± 0.15		CHECKED	X	X	
MATERIAL AND FINISH	N/A	QA APPD	X	X	
REF.	X	IE APPD	X	X	
CODE IDENT. NO.	03554	DWG APPD			

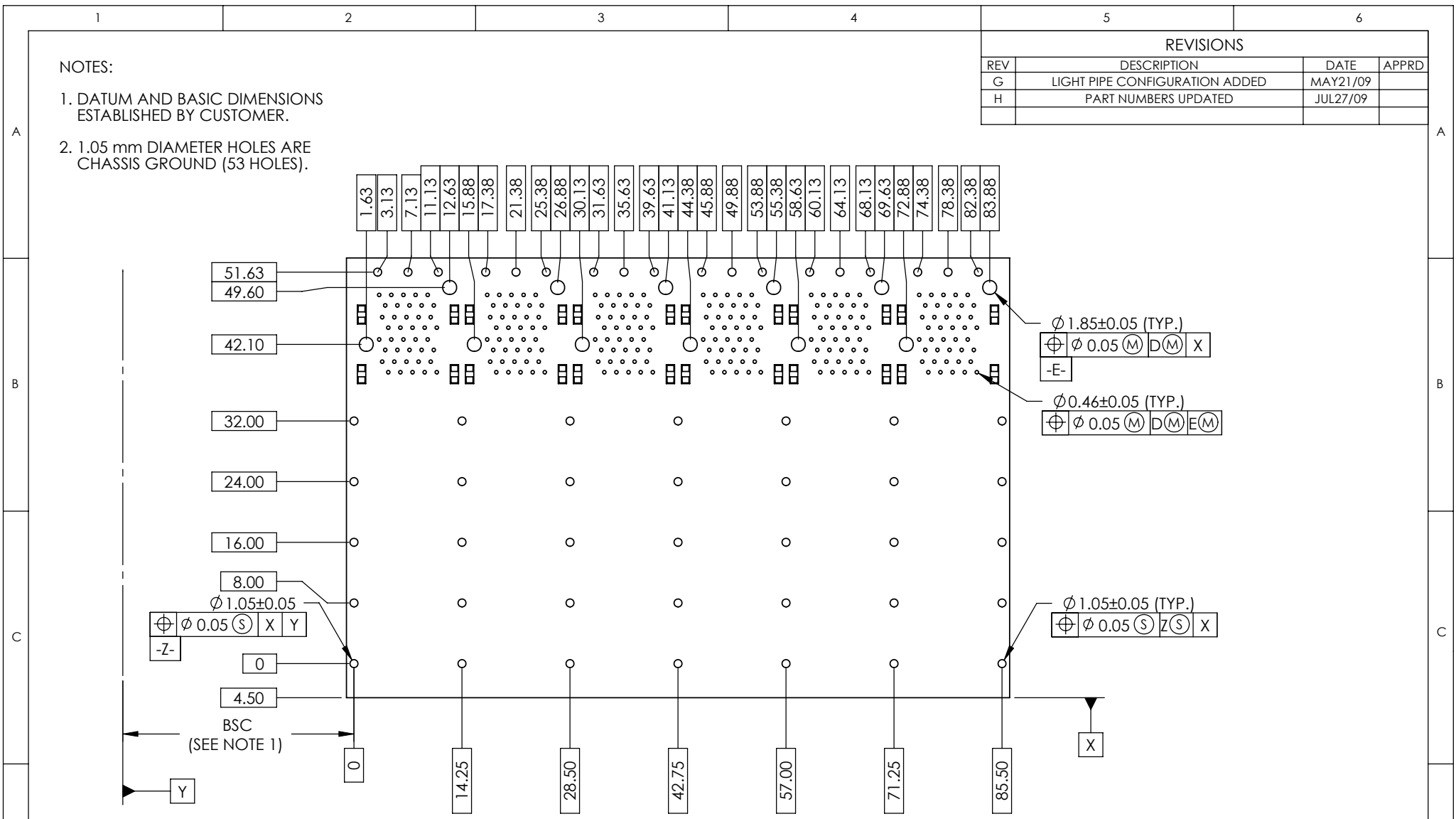
<b>Amphenol Canada Corp.</b>			
TITLE			
2XN SFP+ EXPRESSPORT™ COMBO WITH LIGHT PIPE (ELASTOMERIC GASKET)			
SIZE	DWG. NO.	P-U86-DX427-X0XX1	REV. H
A4	SCALE	2:1	PROJECT SHEET
			5 OF 6

**DO NOT SCALE DRAWING**

THIS DOCUMENT CONTAINS PROPRIETARY INFORMATION AND SUCH INFORMATION MAY NOT BE DISCLOSED TO OTHERS FOR ANY PURPOSE OR USED FOR MANUFACTURING PURPOSES WITHOUT PERMISSION FROM AMPHENOL CANADA CORP.

REVISIONS			
REV	DESCRIPTION	DATE	APPRD
G	LIGHT PIPE CONFIGURATION ADDED	MAY21/09	
H	PART NUMBERS UPDATED	JUL27/09	

- NOTES:
- DATUM AND BASIC DIMENSIONS ESTABLISHED BY CUSTOMER.
  - 1.05 mm DIAMETER HOLES ARE CHASSIS GROUND (53 HOLES).



**DO NOT SCALE DRAWING**

THIS DOCUMENT CONTAINS PROPRIETARY INFORMATION AND SUCH INFORMATION MAY NOT BE DISCLOSED TO OTHERS FOR ANY PURPOSE OR USED FOR MANUFACTURING PURPOSES WITHOUT PERMISSION FROM AMPHENOL CANADA CORP.

UNLESS OTHERWISE SPECIFIED DIMENSIONS ARE IN MILLIMETERS TOLERANCES ARE: DECIMALS                      ANGLES X.X ± 0.25                      ± 1° X.XX ± 0.15	<b>APPROVALS</b>		<b>DATE</b>	<b>Amphenol Canada Corp.</b> TITLE 2XN SFP+ EXPRESSPORT™ COMBO WITH LIGHT PIPE (ELASTOMERIC GASKET)
	DRAWN	J.SI	FEB23/09	
	DESIGNED	J.SI	FEB23/09	
	CHECKED	X	X	
MATERIAL AND FINISH N/A	QA APPD	X	X	SIZE <b>A4</b> DWG. NO. P-U86-DX427-X0XX1 REV. H
REF. X	IE APPD	X	X	
CODE IDENT. NO. 03554	DWG APPD			
	SCALE <b>3:2</b>	PROJECT	SHEET <b>6 OF 6</b>	