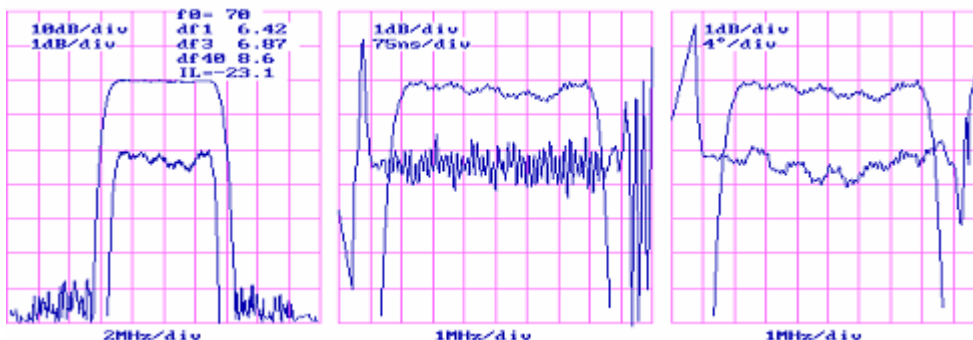




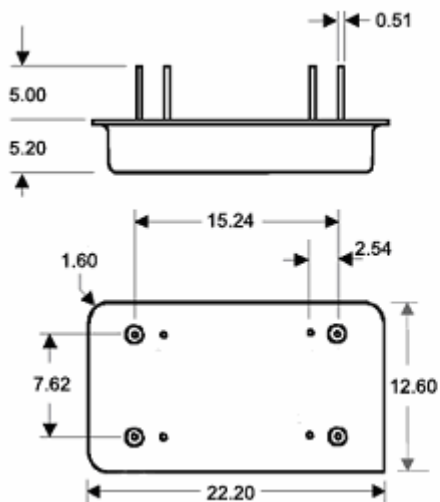
## LBT7026 SAW Filter Electrical Characteristic

| <i>Specifications</i>        |         |   |         |         |
|------------------------------|---------|---|---------|---------|
| Parameter                    | Unit    | Minimum                                 | Typical | Maximum |
| <b>Center Frequency</b>      | MHz     | 69.9                                    | 70      | 70.1    |
| <b>Insertion Loss</b>        | dB      |   | 23      | 25      |
| <b>1 dB Bandwidth</b>        | MHz     | 6.0                                     | 6.4     |         |
| <b>3 dB Bandwidth</b>        | MHz     | 6.5                                     | 6.8     |         |
| <b>40 dB Bandwidth</b>       | MHz     |   | 8.6     | 8.9     |
| <b>Passband Variation</b>    | dB      |   | 0.5     | 1.0     |
| <b>Phase Linearity</b>       | degrees |   | 4       | 6       |
| <b>Group Delay Variation</b> | nsec    |   | 80      | 100     |
| <b>Absolute Delay</b>        | usec    |   | 3       |         |
| <b>Ultimate Rejection</b>    | dB      | 50                                      | 60      |         |
| <b>Substrate Material</b>    |         | 112-LiTaO <sub>3</sub>                  |         |         |
| <b>Ambient Temperature</b>   | ° C     | 25                                      |         |         |
| <b>Package Size</b>          |         | DIP2212 (22.2x12.6x5.2mm <sup>3</sup> ) |         |         |

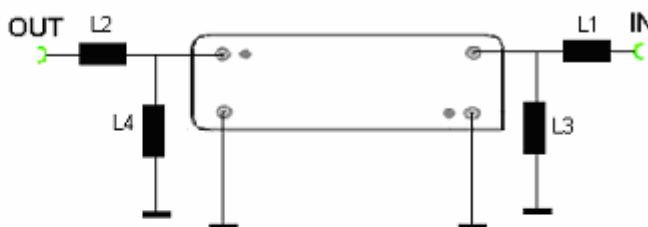
### *Typical Performance*



### *Package Outline*



### *Matching Configuration*



L1=320nH    L2=388nH  
L3=270nH    L4=270nH

**Source/Load Impedance=50 ohm**

Notes - Component values may change depending on board layout.