

Features

- Uses wiring-easy terminal block.
- The two stage super high μ core allows high attenuation over a broad band range.
- Bleed resistor for electric shock protection.

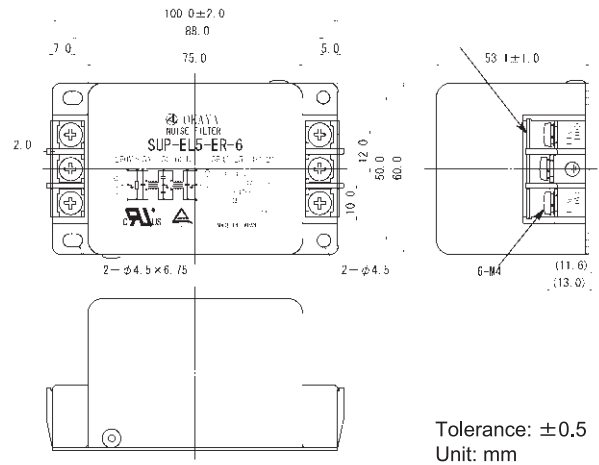
Applications

- Information processing devices, Office appliances, Various control systems and etc.

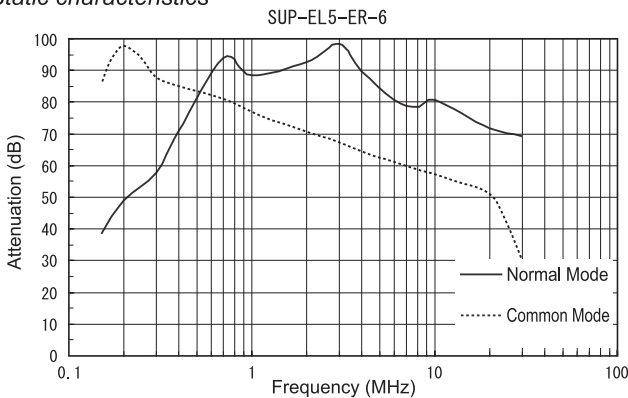


Safety Agency : Standard		File No.
UL	: UL-1283	E78644
C-UL	: C22.2, NO.8-M1986	E78644
TÜV	: EN133200	R2-50006835

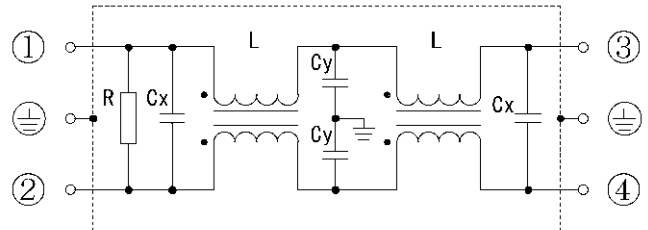
Dimensions (5~30A)



Static characteristics



Circuit (5~30A)



Electrical Specifications

Rated Voltage **250VAC**

Safety Agency	Model Number	Rated Current (A)	Test Voltage	Insulation Resistance	Leakage Current (max)	Voltage Drop (max)	Temperature Rise (max)	Operating Temperature (°C)	Insertion losses	
									Normal Mode (MHz)	Common Mode (MHz)
	SUP-EL5-ER-6	5	Line to Ground 2500Vrms 50/60Hz 60sec	Line to Ground 100MWmin (at 500Vdc)	1mA (at 250Vrms 60Hz)	1.0Vrms	45K	-25 ~ +55	0.4 ~ 30	0.15 ~ 10
	SUP-EL10-ER-6	10							0.4 ~ 30	0.15 ~ 10
	SUP-EL15-ER-6	15							0.6 ~ 30	0.3 ~ 10
	SUP-EL20-ER-6	20							0.7 ~ 30	0.4 ~ 10
	SUP-EL30-ER-6	30							*1.0 ~ 30	*1.0 ~ 20

Guaranteed attenuation is more than 40dB in normal mode and more than 40dB in common mode.
*more than 35dB.