

IEC Appliance Inlet C6 with Line Switch 1-pole



CMF3

**Description**

- Panel Mount:
Screw-on mounting on PCB, from top or bottom
- 2 Functions:
Appliance Inlet Protection class I, Line Switch 1-pole
- For PCB mounting
- Alternative: protection class II version [CMF1](#), [CMF4](#); [CMF2](#), [CMF5](#)

Characteristics

- Easy mounting with center bolt and snapper or screwed on PCB or housing
- Electrical connection done on the PCB
- Bi-positioning of the switch from left or right side, Standard CMF with switch on right side
- With or without rear-side insulation cover
- Qualified for use in equipment according IEC/EN 60950

Other versions on request

- Line switch with other rocker marking
- Line switch on left of inlet

References

[General Product Information](#)

Weblinks

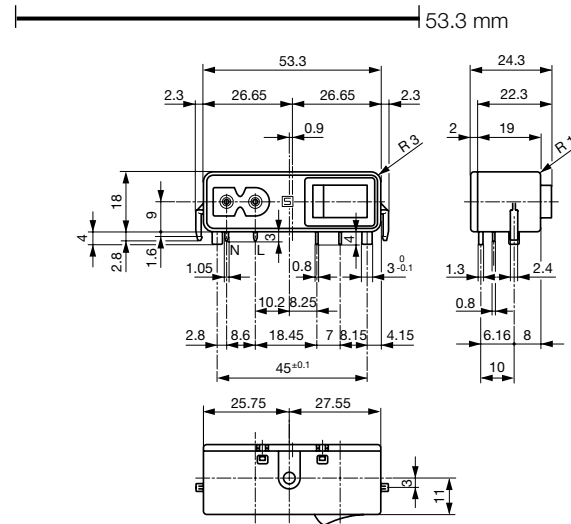
[Approvals](#), [RoHS](#), [CHINA-RoHS](#), [Mating Connectors](#), [e-Store](#), [Distributor-Stock-Check](#), [Accessories](#)

Technical Data

Ratings IEC	2.5 A / 250 VAC; 50 Hz
Ratings UL/CSA	6 A / 125 VAC; 60 Hz
Dielectric Strength	> 2.3 kVAC between L-N > 2.8 kVAC between L/N-PE (1 min/50 Hz)
Allowable Operation Temp.	-25 °C to 70 °C
Degree of Protection	from front side IP 40 acc. to IEC 60529
Protection Class	Suitable for appliances with protection class 1 acc. to IEC 61140
Terminal	PCB 1.6 mm Additional ground terminal
Material: Housing	Thermoplastic, black, UL 94V-0

Appliance Inlet	C6 acc. to IEC/EN 60320-1, UL 498, CSA C22.2 no. 42 (for cold conditions) pin-temperature 70 °C, 2.5 A, Protection Class 1
Line Switch	Rocker switch 1-pole, non-illuminated, acc. to IEC 61058-1 Technical details

Dimensions

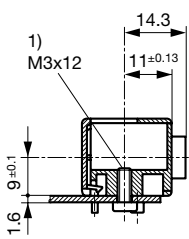


with insulation cover

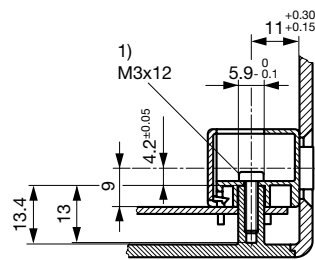
The size of the mounting cut-out can be selected as required.

Fixation on PCB or housing from below

Fixation on PCB or housing from above



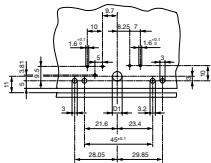
1) self tapping screw



1) self tapping screw

Drilling diagrams

CMF3 (C6)



Variants

Standard CMF with switch on right side

Connectors	Mounting side	Cover	Ground terminal	Ground terminal direction	Order Number
C6	from below		-	-	CMF3.1032.12
C6	from below		Solder terminal 2.8 x 0.8 mm	angled to pin axis	CMF3.1033.12
C6	from below		Solder terminal 2.8 x 0.8 mm	straight	CMF3.1034.12
C6	from below	●	-	-	CMF3.1132.12
C6	from below	●	Solder terminal 2.8 x 0.8 mm	angled to pin axis	CMF3.1133.12
C6	from below	●	Solder terminal 2.8 x 0.8 mm	straight	CMF3.1134.12
C6	from top		-	-	CMF3.1012.12
C6	from top		Solder terminal 2.8 x 0.8 mm	angled to pin axis	CMF3.1013.12
C6	from top		Solder terminal 2.8 x 0.8 mm	straight	CMF3.1014.12
C6	from top	●	-	-	CMF3.1112.12
C6	from top	●	Solder terminal 2.8 x 0.8 mm	angled to pin axis	CMF3.1113.12
C6	from top	●	Solder terminal 2.8 x 0.8 mm	straight	CMF3.1114.12

Packaging unit 50 Pcs

Mating Outlets/Connectors

Category / Description



[Power Cord Overview complete](#)

Power Cord with IEC Connector C5, Angled	2512
Power Cord with IEC Connector C5, Straight	2530
Power Cord further types to CMF3, CMF6	
