

ADAM-5056S/5056SO

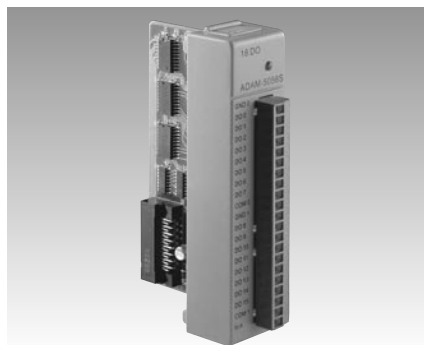
ADAM-5060/5068

ADAM-5069

16-channel Sink / Source Type Isolated Digital Output Module with LED

6/8-channel Relay Output Module

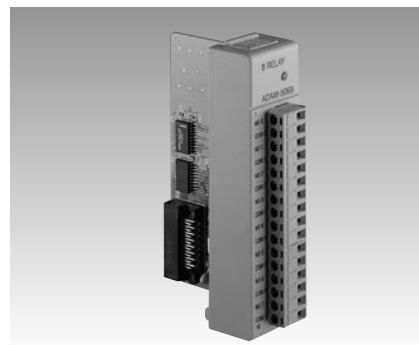
8-channel Power Relay Output Module with LED



ADAM-5056S
ADAM-5056SO



ADAM-5060
ADAM-5068



ADAM-5069



Specifications

General

- **Certifications** CE
FCC (5056SO only)
- **Connectors** 1 x Plug-in screw terminal (# 14-28 AWG)
- **LED Indicator** On: active
Off: inactive
- **Power Consumption** 0.6 W (typical)

Digital Output

- **Channels** 16
- **Digital Output** Open collector to 40 V, 200 mA max. load
5056S (sink)
5056SO (source)

Protection

- **Optical Isolation** 2500 V_{DC}
- **Overvoltage Protection** 70 V_{DC}

Ordering Information

- **ADAM-5056S** 16-channel Sink Type Isolated Digital Output Module with LED
- **ADAM-5056SO** 16-channel Source Type Isolated Digital Output Module with LED

Specifications

General

- **Certifications** CE
FM (ADAM-5060 only)
- **Connectors** 1 x Plug-in screw terminal (# 14-22 AWG)
- **Power Consumption** ADAM-5060: 0.7 W (typical); 1.8 W (max.)
ADAM-5068: 0.25 W (typical); 1.8 W (max.)

Relay Output

- **Breakdown Voltage** 500 V_{AC} (50/60 Hz)
- **Channels** ADAM-5060:
2 x form A, 4 x form C
ADAM-5068: 8 x form A
- **Contact Rating** ADAM-5060:
AC: 125 V @ 0.6 A
250 V @ 0.3 A
DC: 30 V @ 2 A
110 V @ 0.6 A
ADAM-5068:
AC: 120 V @ 0.5 A
DC: 30 V @ 1 A
- **Insulation Resistance** 1 G Ω min. @ 500 V_{DC}
- **Relay Off Time (typical)** ADAM-5060: 2 ms
ADAM-5068: 3 ms
- **Relay On Time (typical)** ADAM-5060: 3 ms
ADAM-5068: 7 ms
- **Total Switching Time** 10 ms

Ordering Information

- **ADAM-5060** 6-channel Relay Output Module
- **ADAM-5068** 8-channel Relay Output Module

Specifications

General

- **Certifications** CE, FCC class A
- **Connectors** 1 x Plug-in screw terminal (# 14-22 AWG)
- **LED Indicator** On: Active
Off: Non-active
- **Power Consumption** 0.25 W (typical); 2.2 W (max.)

Relay Output

- **Breakdown Voltage** 750 V_{AC} (50/60 Hz)
- **Channels** 8 x form A
- **Contact Rating** AC: 250 V @ 5 A
DC: 30 V @ 5 A
- **Insulation Resistance** 1 G Ω @ 500 V_{DC}
- **Relay On Time** 5 ms
- **Relay Off Time** 5.6 ms

Ordering Information

- **ADAM-5069** 8-channel Power Relay Output Module with LED