

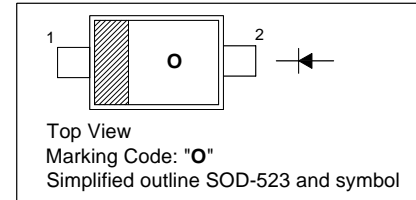
# 1SS388

## SILICON EPITAXIAL SCHOTTKY BARRIER DIODE

for high speed switching application

### PINNING

PIN	DESCRIPTION
1	Cathode
2	Anode

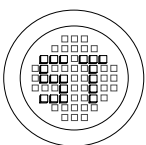


### Absolute Maximum Ratings ( $T_a = 25\text{ }^\circ\text{C}$ )

Parameter	Symbol	Value	Unit
Maximum (Peak) Reverse Voltage	$V_{RM}$	45	V
Reverse Voltage	$V_R$	40	V
Average Forward Current	$I_O$	100	mA
Maximum (Peak) Forward Current	$I_{FM}$	300	mA
Surge Current (10 ms)	$I_{FSM}$	1	A
Power Dissipation	$P_{tot}$	150	mW
Junction Temperature	$T_J$	125	$^\circ\text{C}$
Operating Temperature Range	$T_{opr}$	- 40 to + 100	$^\circ\text{C}$
Storage Temperature Range	$T_s$	- 55 to + 125	$^\circ\text{C}$

### Characteristics at $T_a = 25\text{ }^\circ\text{C}$

Parameter	Symbol	Max.	Unit
Forward Voltage at $I_F = 50\text{ mA}$	$V_F$	0.6	V
Reverse Current at $V_R = 10\text{ V}$	$I_R$	5	$\mu\text{A}$
Total Capacitance at $f = 1\text{ MHz}$	$C_T$	25	pF



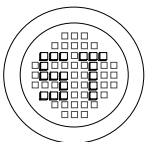
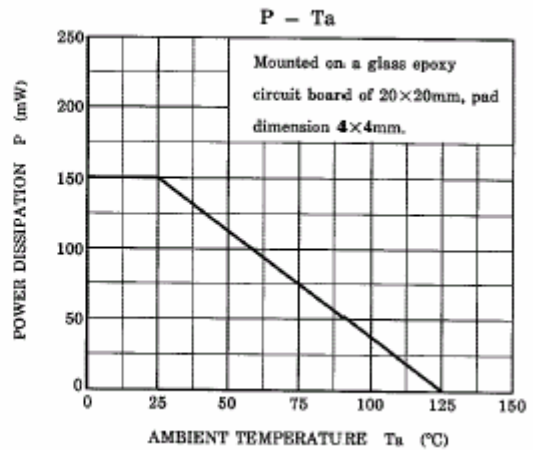
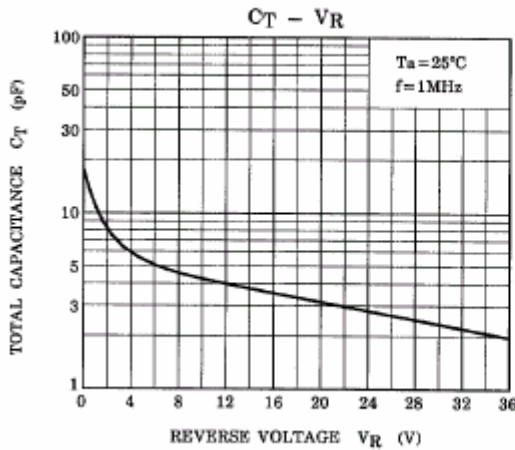
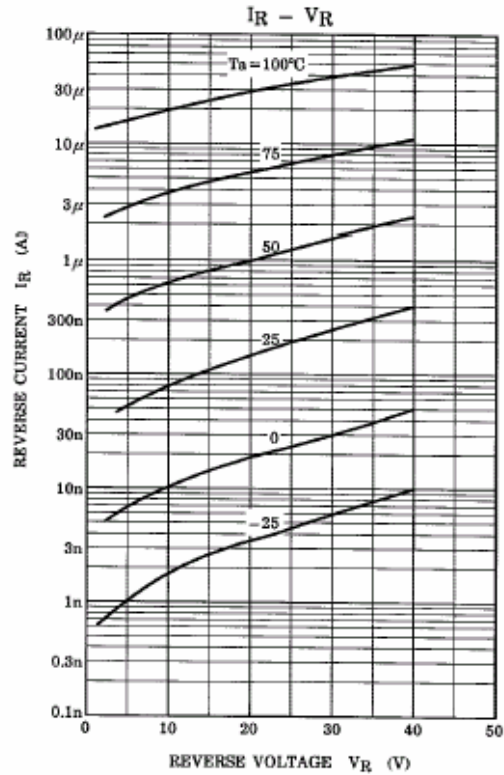
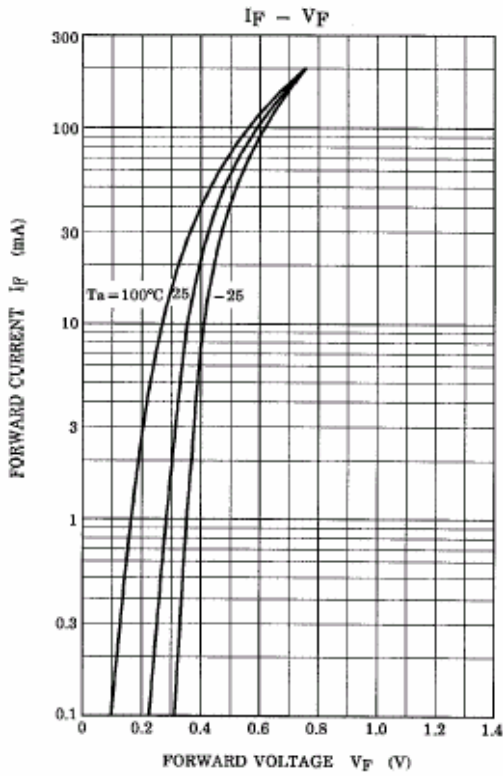
®

## SEMTECH ELECTRONICS LTD.

(Subsidiary of Sino-Tech International Holdings Limited, a company listed on the Hong Kong Stock Exchange, Stock Code: 724)



Dated : 23/11/2006



**SEMTECH ELECTRONICS LTD.**

(Subsidiary of Sino-Tech International Holdings Limited, a company listed on the Hong Kong Stock Exchange, Stock Code: 724)



ISO/TS 16949 : 2002  
Certificate No. 05103

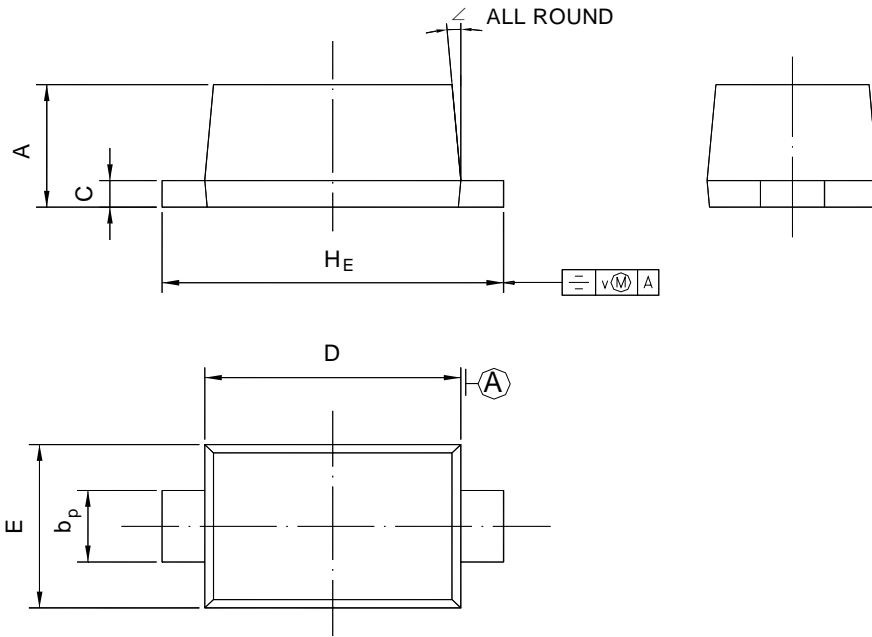
ISO 14001:2004  
Certificate No. 7116

ISO 9001:2000  
Certificate No. 0506098

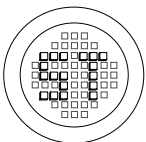
## PACKAGE OUTLINE

Plastic surface mounted package; 2 leads

SOD-523



UNIT	A	b <sub>p</sub>	C	D	E	H <sub>E</sub>	V	∠
mm	0.70 0.60	0.4 0.3	0.135 0.127	1.25 1.15	0.85 0.75	1.7 1.5	0.1	5°



®

**SEMTECH ELECTRONICS LTD.**

(Subsidiary of Sino-Tech International Holdings Limited, a company listed on the Hong Kong Stock Exchange, Stock Code: 724)



ISO/TS 16949 : 2002  
Certificate No. 05103



ISO 14001:2004  
Certificate No. 7116



ISO 9001:2000  
Certificate No. 0506098

Dated : 23/11/2006