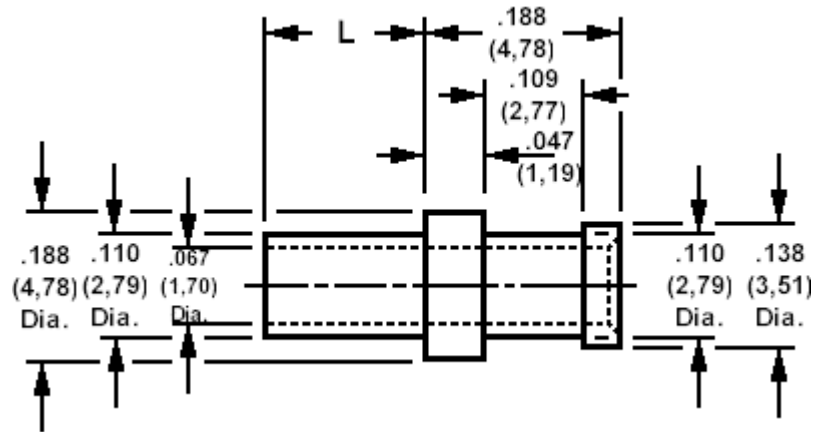


## 160-1797 Solder terminal, turreted, thru hole

Recommended mounting hole .113 (2,87), #33 drill



### How to order code

**160-1797-XX-YY-00**

Basic Part No XX = L dimension, YY = Plating Finish

DIMENSIONS (XX)			
Basic Part No	(XX)	L	Board Thickness
160-1797	-01	.078 (1,98)	.031 (0,79)
	-02	.109 (2,77)	.062 (1,58)
	-03	.141 (3,58)	.094 (2,38)
	-04	.172 (4,37)	.125 (3,18)

MATERIALS			
Component	Material	Finish <sub>1</sub> (YY)	
Terminal	Brass	-01	-05
		Silver	Electro Solder

SWAGE TOOLING	
Recommended Swaging Tools:-	
Anvil	435-6451-01-00-00
Roll punch	435-6601-01-00-00
Flare Punch	435-6663-01-00-00