

Series TS-EDS04

Modular Jacks (PCB Edge-Mounted, Shielded)

I/O
Connectors

Specifications

Insulation Resistance: 500MΩ min. at 100V DC
 Withstanding Voltage: 1,000Vrms min. 60Hz
 Contact Resistance: 30mΩ max. at 10mA / 20mV max.
 Operating Temp. Range: -30°C to +70°C
 Mating Cycles: 1,000 insertions

Materials and Finish

Insulator: PA9T (UL94V-0)
 Contacts: Phosphor Bronze
 Contact Plating: Gold over Nickel
 Solder Plating: Tin over Nickel

Features

- 2x1 and 2x4, 8 pins with 8 contacts, PCB edge-mount
- Tape and Reel packaging (60 pcs./ tray)

Part Number (Details)

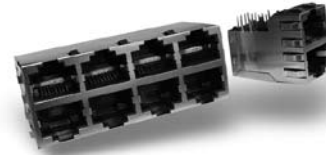
EDS04RJ45 - *X* - 8x8 - T9S

Series No.

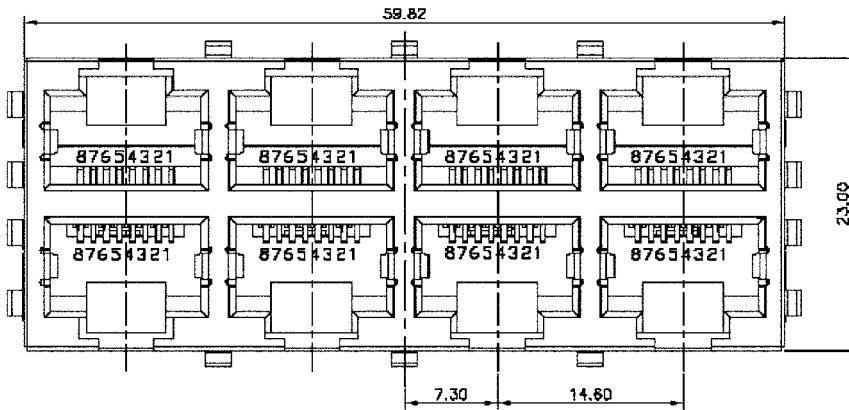
2x1 = Two Jacks in One Row
 2x4 = Two Jacks in Four Rows

Contacts: 8 Pin / 8 Contacts

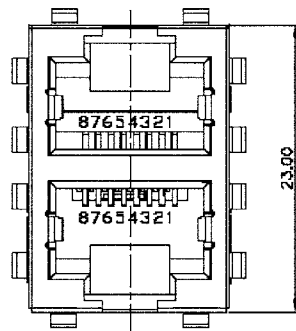
Design No.



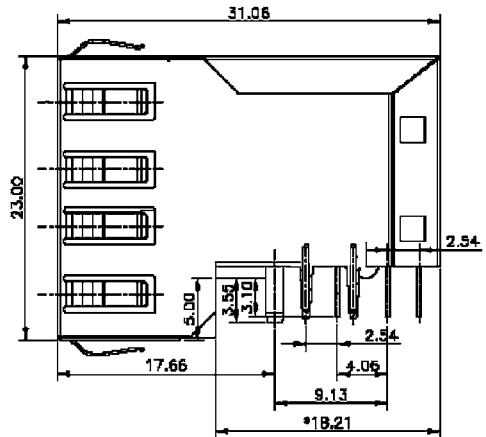
Outline Dimensions



View A



View A



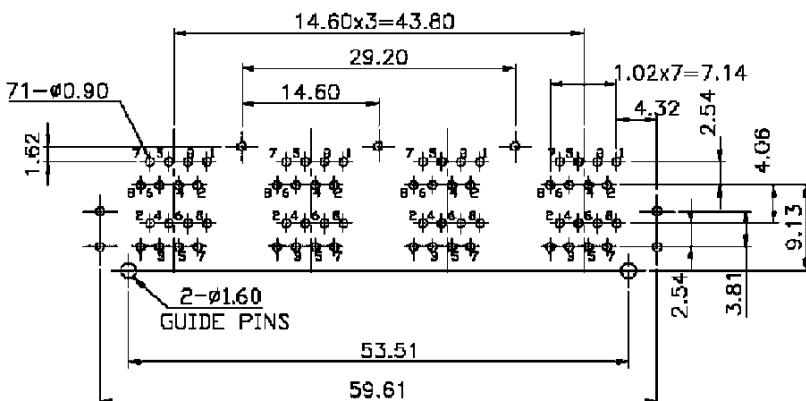
View A

Top View

Modular Jacks

Recommended PCB Layout

EDS04RJ45-2x4-2x8-T9S



EDS04RJ45-2x1-2x8-T9S

