

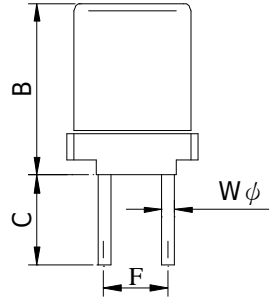
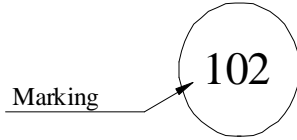
SPECIFICATION FOR APPROVAL

REF : 20100118-B

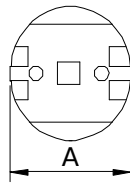
PAGE: 1

PROD. NAME	SHIELDED INDUCTOR	ABC'S DWG NO. ABC'S ITEM NO.	FR1013□□□□L□-□□□
---------------	--------------------------	---------------------------------	------------------

I . CONFIGURATION & DIMENSIONS :



A :	10.0±0.5	m/m
B :	13.0±0.5	m/m
C :	5.0±2	m/m
F :	5.0±0.5	m/m
Wφ :	0.7±0.05	m/m

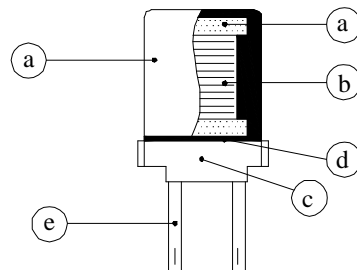


II . SCHEMATIC DIAGRAM :



III . MATERIALS :

- a . Core : Ferrite core
- b . Wire : Enamelled copper wire (class F)
- c . Bobbin : Phenolic
- d . Adhesive : Epoxy resin
- e . Lead : Sn/Ag/Cu
- f . Remark : Products comply with RoHS' requirements



IV . GENERAL SPECIFICATION :

- a . Temper ture rise : 20°C max. at rated current.
- b . Storage temp. : -25 ~ +85°C
- c . Operaing temp. : -40 ~ +105°C

AR-001A

SPECIFICATION FOR APPROVAL

REF : 20100118-B

PAGE: 2

PROD. NAME	SHIELDED INDUCTOR	ABC'S DWG NO.	FR1013□□□□L□-□□□
		ABC'S ITEM NO.	

V . ELECTRICAL SPECIFICATION :

DWG No.	Inductance (mH)	Q min.	Test Freq. (Hz)		SRF (KHz) min.	RDC (Ω) max.	IDC (mA) max.
			L	Q			
FR1013102KL□-□□□	1.0 ±10%	40	1K	252.0K	740	4.0	150
FR1013122KL□-□□□	1.2 ±10%	40	1K	252.0K	670	5.0	140
FR1013152KL□-□□□	1.5 ±10%	40	1K	252.0K	500	6.0	130
FR1013182KL□-□□□	1.8 ±10%	40	1K	252.0K	480	7.0	115
FR1013222KL□-□□□	2.2 ±10%	40	1K	252.0K	410	10.0	100
FR1013272KL□-□□□	2.7 ±10%	40	1K	252.0K	390	11.0	95
FR1013332KL□-□□□	3.3 ±10%	30	1K	252.0K	350	12.0	85
FR1013392KL□-□□□	3.9 ±10%	30	1K	252.0K	340	13.0	80
FR1013472KL□-□□□	4.7 ±10%	30	1K	252.0K	320	23.0	70
FR1013562KL□-□□□	5.6 ±10%	30	1K	252.0K	310	25.0	65
FR1013682KL□-□□□	6.8 ±10%	20	1K	252.0K	280	30.0	60
FR1013822KL□-□□□	8.2 ±10%	20	1K	252.0K	260	32.0	50
FR1013103KL□-□□□	10.0 ±10%	50	1K	79.6K	240	35.0	45
FR1013123KL□-□□□	12.0 ±10%	50	1K	79.6K	210	50.0	40
FR1013153KL□-□□□	15.0 ±10%	50	1K	79.6K	190	58.0	38
FR1013183KL□-□□□	18.0 ±10%	50	1K	79.6K	180	63.0	35
FR1013223KL□-□□□	22.0 ±10%	40	1K	79.6K	140	90.0	30
FR1013273KL□-□□□	27.0 ±10%	40	1K	79.6K	130	100.0	28
FR1013333KL□-□□□	33.0 ±10%	40	1K	79.6K	125	115.0	25
FR1013393KL□-□□□	39.0 ±10%	30	1K	79.6K	120	185.0	23
FR1013473KL□-□□□	47.0 ±10%	30	1K	79.6K	110	205.0	22

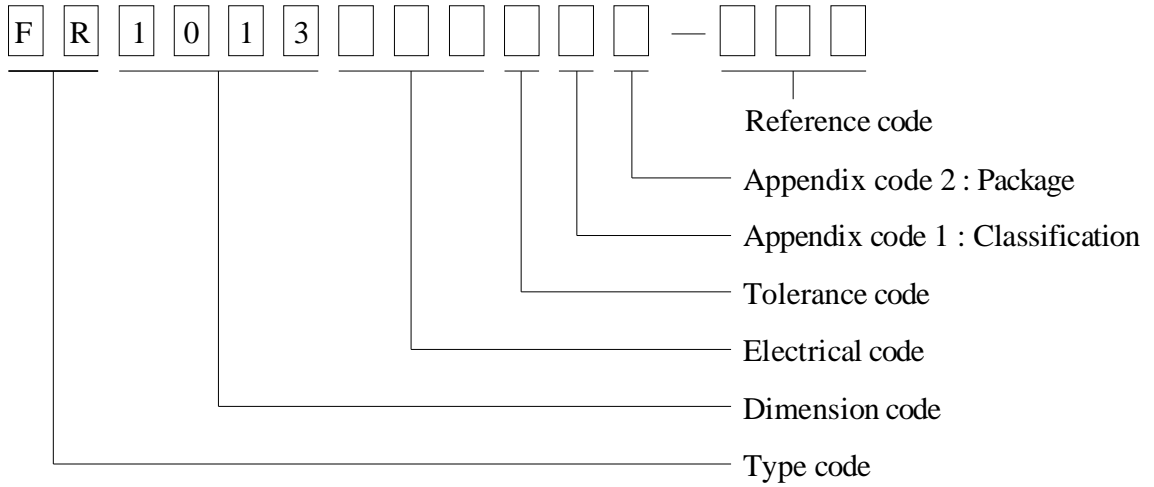
1). □ : Packing information... [A] Bulk

2). "- □□□":Reference code

SPECIFICATION FOR APPROVAL

PROD. NAME	SHIELDED INDUCTOR	ABC'S DWG NO.	FR1013□□□□L□-□□□
		ABC'S ITEM NO.	

VI . DWGING NUMBER EXPRESSION :



Appendix code 1 : Product Classification

- L : Lead Free Standard products comply with RoHS' requirements
- 1 ~ 9 : Lead Free Special products comply with RoHS' requirements

Appendix code 2 : Package Information

Code	Inner package	Inner package Q'TY	Remark
A	Tray	110 pcs	

