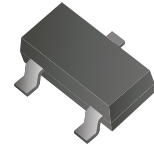


CDST-21/A/C/S-G

Reverse Voltage: 250 Volts

Forward Current: 200 mA

RoHS Device



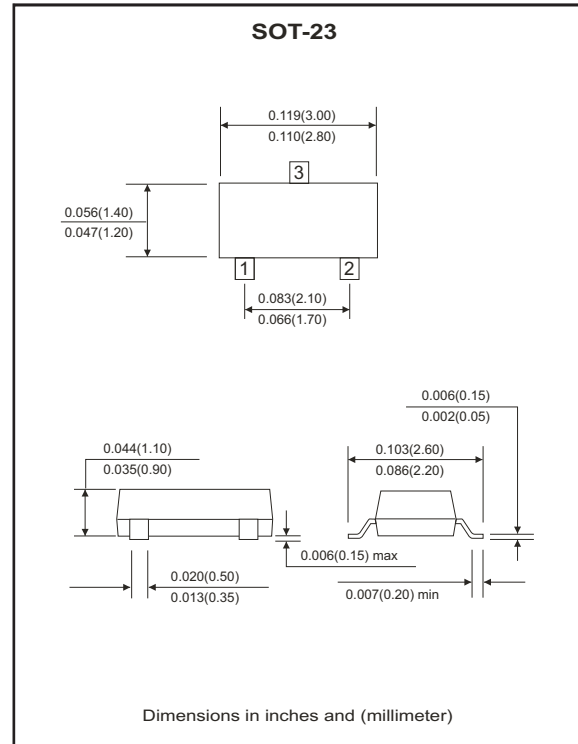
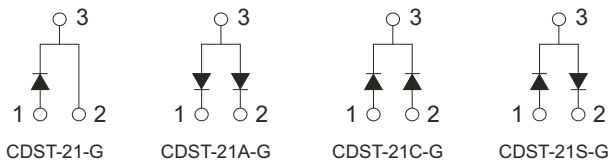
Features

- Design for mounting on small surface.
- High speed switching.
- High mounting capability, strong surge withstand, high reliability.

Mechanical data

- Case: SOT-23, molded plastic.
- Terminals: solderable per MIL-STD-750, method 2026.
- Approx. weight: 0.008 grams

Circuit diagram



Maximum Ratings and Electrical Characteristics

(at Ta=25 °C unless otherwise noted)

Parameter	Symbol	Conditions	Value	Units
Repetitive peak reverse voltage	V_{RRM}		250	V
Reverse voltage	V_R		250	V
Average forward current	I_F		200	mA
Power dissipation	P_D		225	mW
Maximum forward voltage	V_F	@ $I_F=100mA$ @ $I_F=200mA$	1.0 1.25	V
Maximum reverse current	I_R	@ $V_R=200V$	1	μA
Maximum reverse recovery time	T_{rr}	$I_F=10mA, R_L=100\Omega$	50	nS
Maximum diode capacitance	C_J	$V_R=0V, f=1.0MHz$	5	pF
Maximum junction temperature	T_J		150	$^{\circ}C$
Storage temperature	T_{STG}		-55 to +150	$^{\circ}C$

RATING AND CHARACTERISTIC CURVES (CDST-21/A/C/S-G)

Fig.1 Forward Characteristics

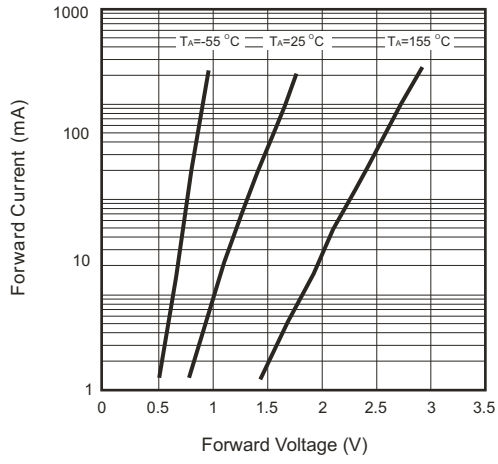


Fig.2 Reverse Characteristics

