

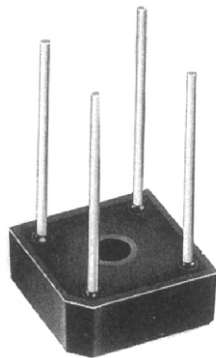
KBPC1 thru SERIES

BR3 SERIES

SINGLE-PHASE SILICON BRIDGE



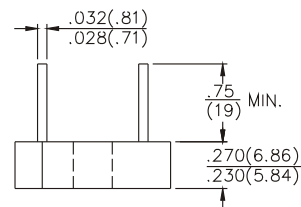
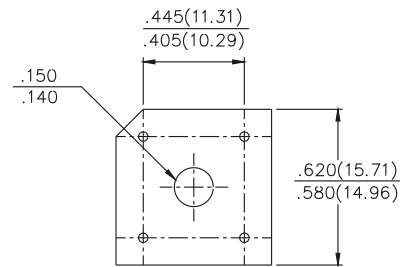
CHENG-YI
ELECTRONIC



FEATURES

- UL recognized file # E149311
- Surge overload rating-50 amperes peak
- Low forward voltage drop
- Small size:simple installation
- Tinned copper leads
- Mounting:Thru hold for #6 screw
- Plastic material has UL flammability classification 94V-O
- Electrically isolated base-1800Volts
- Mounting position: Any

VOLTAGE RANGE
50 TO 1000 VOLTS
CURRENT
3.0 Amperes



Dimensions in inches and (millimeters)

MAXIMUM RATINGS AND ELECTRICAL CHARACTERISTICS

Ratings at 25°C ambient temperature unless otherwise specified.

Single phase, half wave, 60Hz, resistive or inductive load.

For capacitive load, derate current by 20%.

| | | BR305 | BR31 | BR32 | BR34 | BR36 | BR38 | BR310 | UNITS |
|--|-----------------|-------------|---------|---------|---------|---------|---------|---------|---------------|
| | | KBPC1005 | KBPC101 | KBPC102 | KBPC104 | KBPC106 | KBPC108 | KBPC110 | |
| Maximum Recurrent Peak Reverse Voltage | V_{RRM} | 50 | 100 | 200 | 400 | 600 | 800 | 1000 | V |
| Maximum RMS Bridge Input Voltage | V_{RMS} | 35 | 70 | 140 | 280 | 420 | 560 | 700 | V |
| Maximum DC Blocking Voltage | V_{DC} | 60 | 100 | 200 | 400 | 600 | 800 | 1000 | V |
| Maximum Average Forward Output Current | $V_{(AV)}$ | 3.0 2.0 | | | | | | | A A |
| Peak Forward Surge Current 8.3 ms single half sine-wave superimposed on rated load | I_{FSM} | 50 | | | | | | | A |
| Maximum DC Forward Voltage drop per element at 1.5A DC | V_F | 1.2 | | | | | | | V |
| Maximum DC Reverse Current at rated DC Blocking Voltage Per Element | I_R | 10 1 | | | | | | | μA mA |
| I^2t Rating for fusing($t < 8.3ms$) | I^2t | 10 | | | | | | | A^2S |
| Typical Thermal Resistance | $R \theta_{JC}$ | 10 | | | | | | | $^{\circ}C/W$ |
| Operating Temperature Range | T_J | -55 to +125 | | | | | | | $^{\circ}C$ |
| Storage Temperature Range | T_{STG} | -55 to +150 | | | | | | | $^{\circ}C$ |

KBPC1 thru SERIES

BR3 SERIES

SINGLE-PHASE SILICON BRIDGE



CHENG-YI
ELECTRONIC

RATING AND CHARACTERISTICS CURVES
KBPC1 SERIES

Fig. 1 - MAXIMUM FORWARD SURGE CURRENT

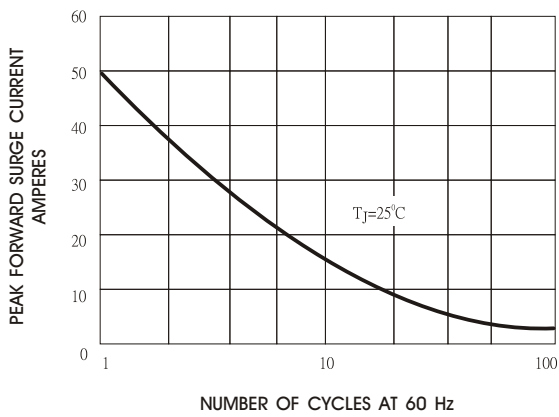


Fig. 2 - DERATING CURVE
OUTPUT RECTIFIED CURRENT

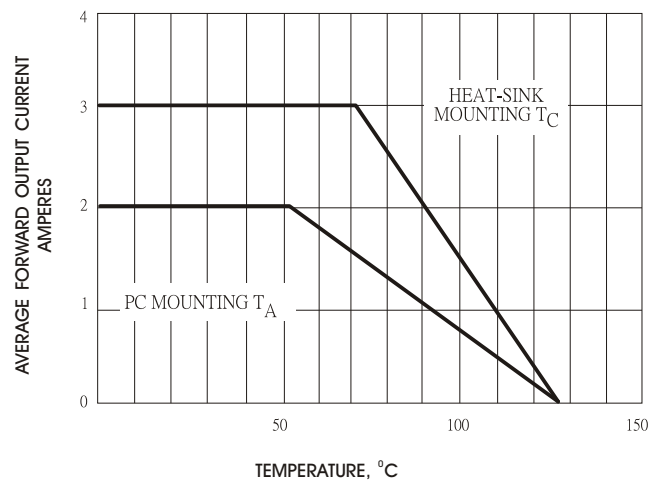


Fig. 3 - TYPICAL FORWARD
CHARACTERISTICS

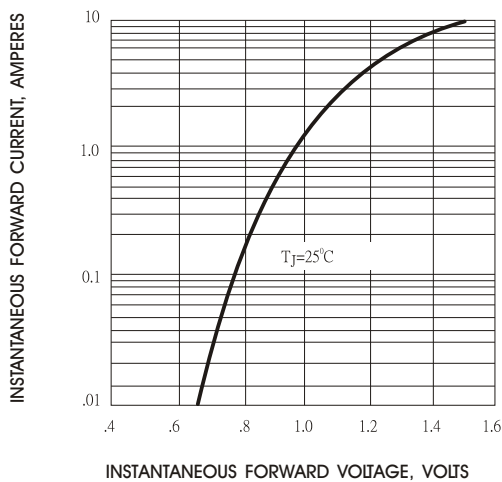


Fig. 4 - TYPICAL REVERSE
CHARACTERISTICS

