

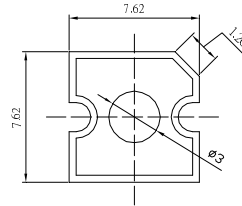
■Features

- High Luminous Super Flux Output
- 3 ϕ Standard Directivity
- Superior Weather-resistance
- UV Resistant Epoxy
- Water Clear Type

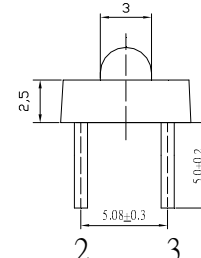
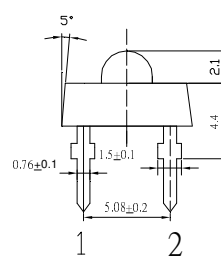
■Applications

- Traffic signal, Portable light source
- Signage and channel letter
- Decorating and entertainment lighting
- Architectural lighting
- Outdoor/Indoor applications/Other Lighting

■Outline Dimension



Unit:mm
Tolerance: ± 0.3 mm
1,4 Cathode
2,3 Anode



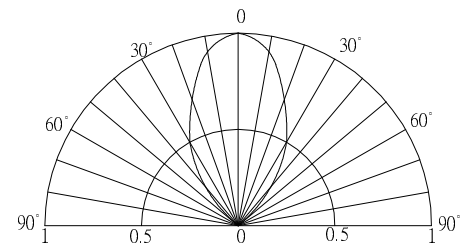
■Absolute Maximum Rating

(Ta=25°C)

Item	Symbol	Value	Unit
DC Forward Current	I _F	70	mA
Pulse Forward Current*	I _{FP}	120	mA
Reverse Voltage	V _R	5	V
Power Dissipation	P _D	168	mW
Operating Temperature	Topr	-30 ~ +85	°C
Storage Temperature	Tstg	-40 ~ +100	°C
Lead Soldering Temperature	Tsol	260°C/5sec	-

*Pulse width Max.10ms Duty ratio max 1/10

■Directivity



■Electrical -Optical Characteristics

(Ta=25°C)

Item	Symbol	Condition	Min.	Typ.	Max.	Unit
DC Forward Voltage	V _F	I _F =20mA	1.8	2.1	2.4	V
DC Reverse Current	I _R	V _R =10V	-	-	10	μ A
Domi. Wavelength*	λ_D	I _F =20mA	585	590	595	nm
Luminous Intensity*	I _v	I _F =20mA	-	2500	-	mcd
50% Power Angle	2 $\theta_{1/2}$	I _F =20mA	-	60	-	deg

*1 Tolerance of dominant wavelength is ± 1 nm

*2 Tolerance of luminous intensity is ± 15 %

■Maximum Forward DC Current

